

Freestanding Building Available for Lease Bank/Retail w/ Drive-Thru

257 Lowell Road Hudson, NH



257 LOWELL ROAD

4,000 +/- SF Available
with Drive-Thru

Property Information

Address:	257 Lowell Road Hudson, NH 03051	Traffic Counts:	21,293 +/- VPD via State Rt. 3A
Available:	4,000 +/- SF	Frontage:	195'
Total SF:	4,000 +/- SF	Water:	Town
Land Area:	1.07 +/- Acres	Sewer:	Town
Parking Spaces:	25 +/- Spaces	Gas:	Natural
Parking Ratio:	3.08 / 1,000 GLA +/-	Zoning:	G1
		Year Built:	2000

Trade Area Demographics

	3 Miles	5 Miles	10 Miles
Population:	41,784	116,005	387,543
Households:	16,546	44,918	144,690
Average HH Income:	\$93,763	\$96,195	\$99,218



257 Lowell Road in Hudson, NH is a 4,000 +/- retail building located on a 1.07 +/- acre parcel of land. This property sits in a primary retail corridor situated on the heavily traveled Route 3A, located at a lighted intersection and features dedicated on-site parking. Neighboring retailers include Sam's Club, McDonald's, Walmart, Market Basket, New Hampshire Wine & Liquor Outlet, Rite Aid and more. This freestanding bank branch with drive thru is ideal for a variety of retail uses including a financial institution, retailer or restaurant.

For Leasing Information:

Chris McMahon
781.862.9700 x 225
cjm@sumrp.com

Travis Ginsberg
781-862-9700 x 226
tg@sumrp.com

Summit Realty Partners

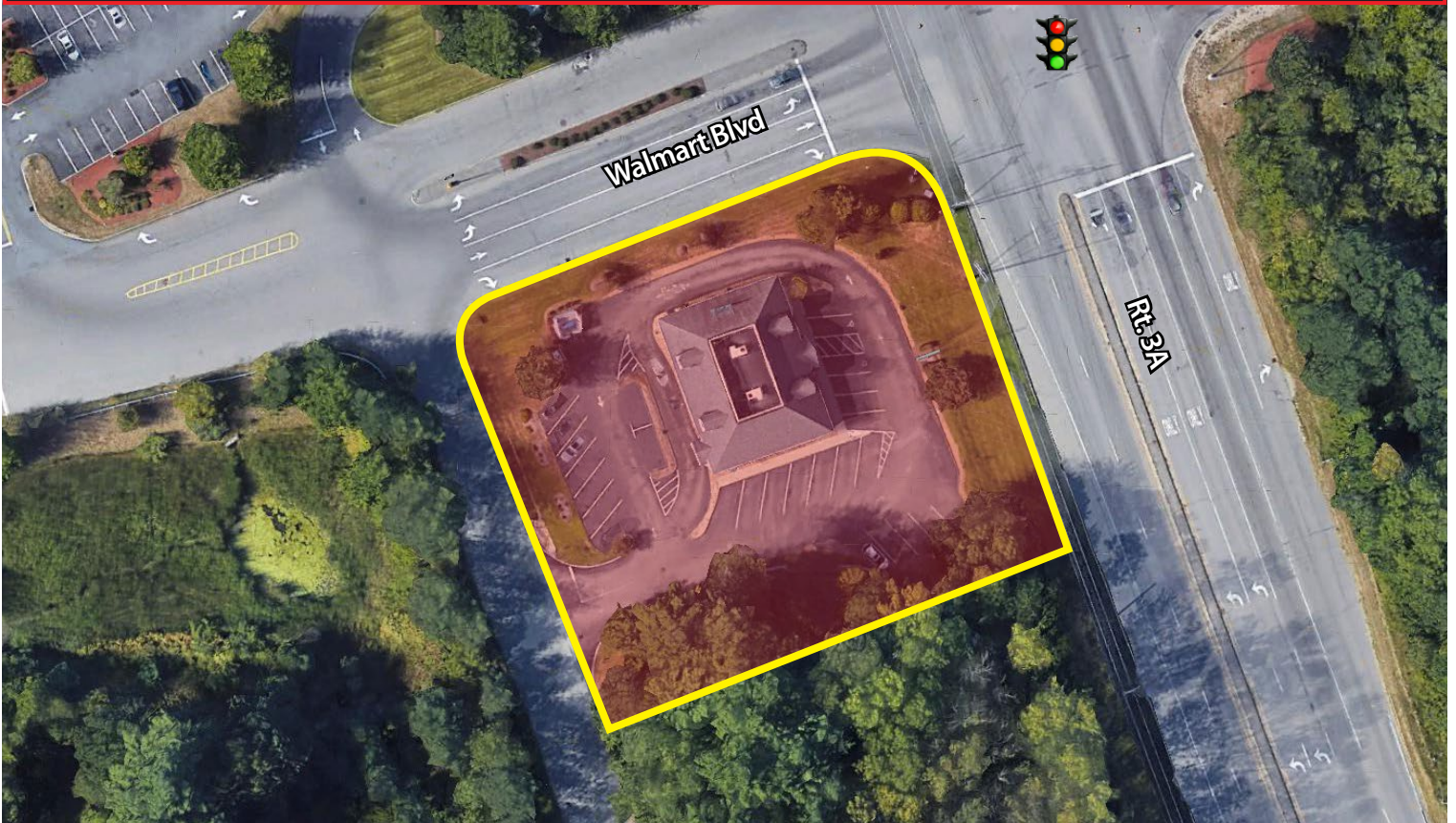
Summit Realty Partners
80 Hayden Avenue
Lexington, MA 02421
www.summitrealtypartners.com

Freestanding Building Available for Lease Bank/Retail w/ Drive-Thru

257 Lowell Road Hudson, NH



257 Lowell Road- 4,000 +/- SF Building with Drive-Thru



Summit Realty Partners

Summit Realty Partners
80 Hayden Avenue
Lexington, MA 02421
www.summitrealtypartners.com