



FOR LEASE

142 Sansome Street

SUITE 610, SAN FRANCISCO, CA

Suite 610



±2,100
TOTAL RSF



1 BLOCK FROM
BART/MUNI

BOUTIQUE building
in heart of Financial
District

PRICE negotiable

ON-SITE management

TWO private offices

TWO medium
conference rooms

HVAC and operable
windows

KITCHEN included

AVAILABLE now

BRAD VAN BLOIS

415.229.8906

brad.vanblois@kidder.com

LIC N° 01208137

**Kidder
Mathews**

KIDDER.COM

This information supplied herein is from sources we deem reliable. It is provided without any representation, warranty, or guarantee, expressed or implied as to its accuracy. Prospective Buyer or Tenant should conduct an independent investigation and verification of all matters deemed to be material, including, but not limited to, statements of income and expenses. Consult your attorney, accountant, or other professional advisor.

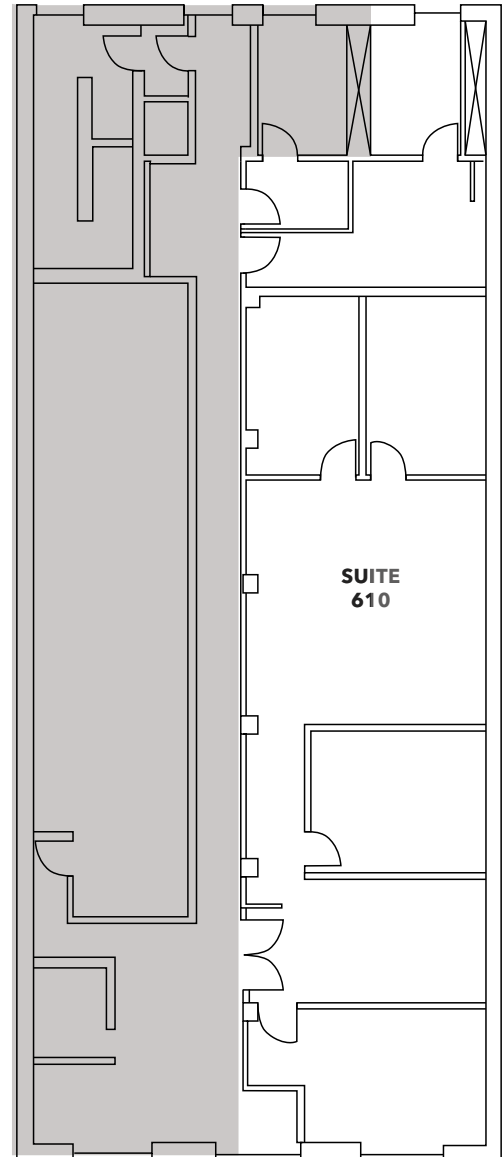


FOR LEASE

142 Sansome Street

SUITE 610, SAN FRANCISCO, CA

Suite 610



*FLOORPLAN NOT DRAWN TO SCALE

BRAD VAN BLOIS

415.229.8906

brad.vanblois@kidder.com

LIC N° 01208137

KIDDER.COM

This information supplied herein is from sources we deem reliable. It is provided without any representation, warranty, or guarantee, expressed or implied as to its accuracy. Prospective Buyer or Tenant should conduct an independent investigation and verification of all matters deemed to be material, including, but not limited to, statements of income and expenses. Consult your attorney, accountant, or other professional advisor.

km Kidder Mathews