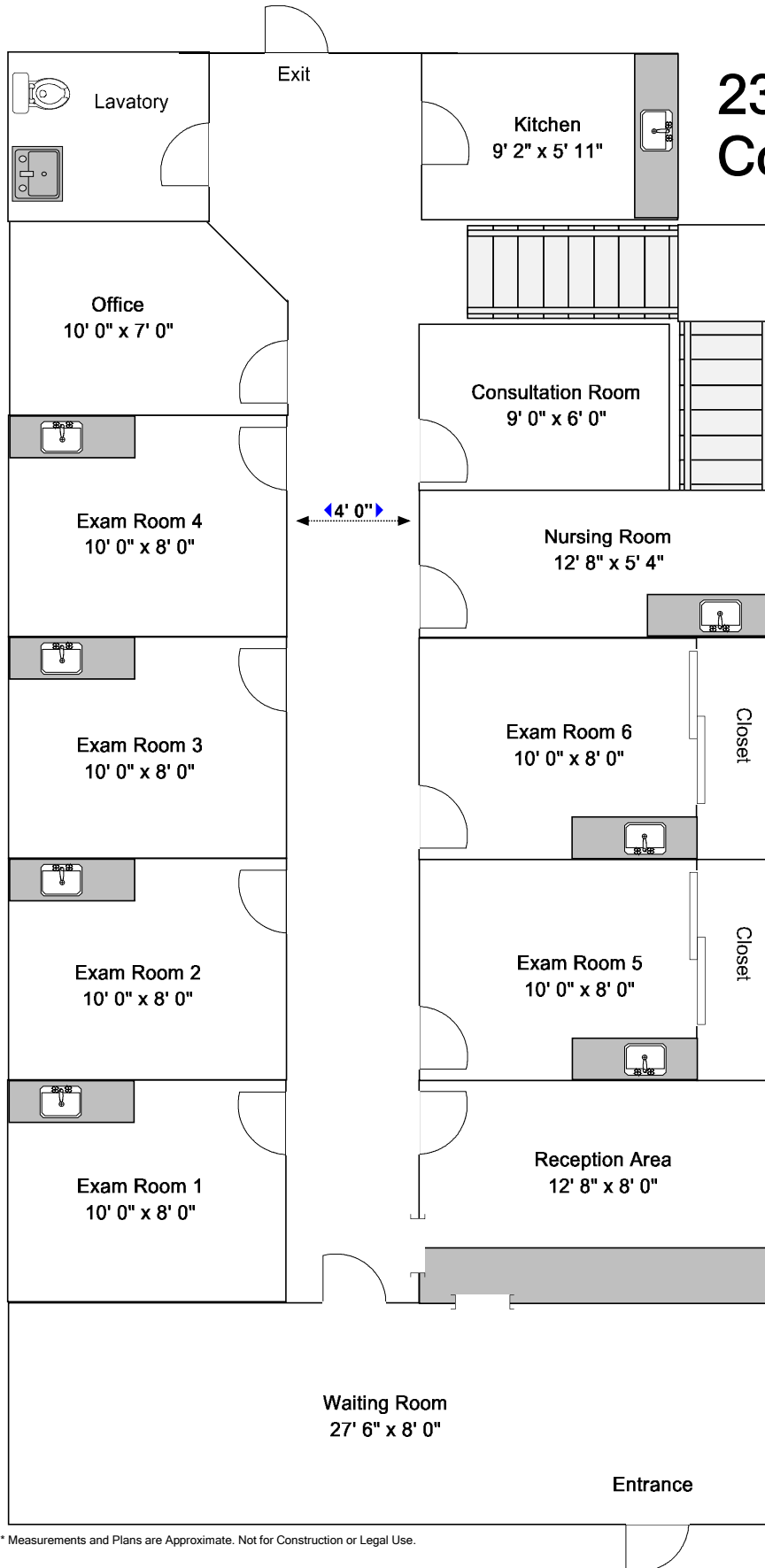


10759 Winterset Dr. Orland Park, IL 60467

Main Level

2300SF Medical Office Condo Ready for Use!



- 6 Fully Equipped Exam Rooms
- 2 Consulting Rooms
- Treatment Room
- Kitchen
- Reception Area
- Waiting Room
- 700SF Upper Level with Full Bath

RE/MAX Ruben Vallejo
RE/MAX Synergy
COMMERCIAL

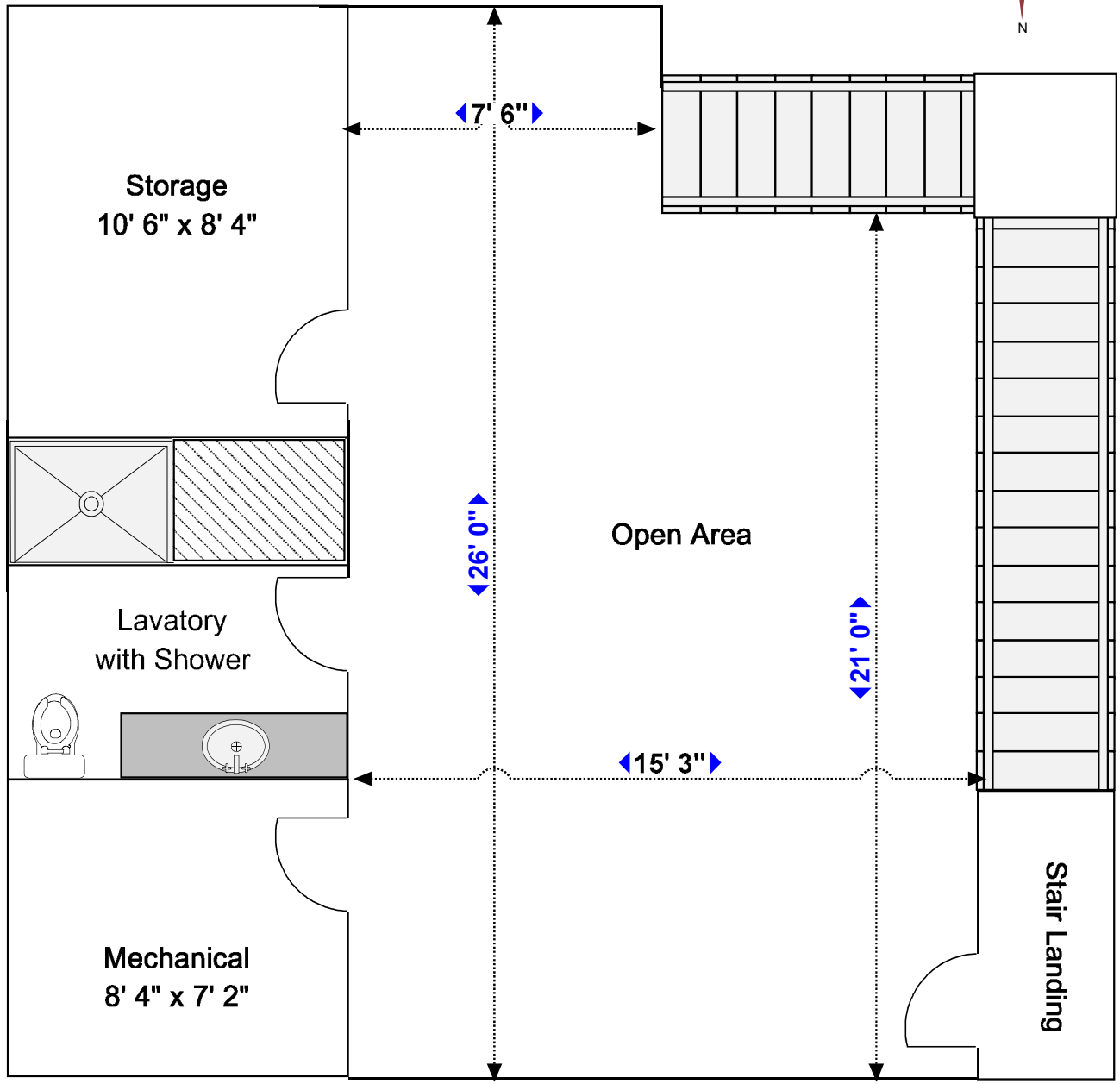
Cell: (708) 560-3499
Email: ruvallejo@aol.com
Office: 15607 South Harlem Avenue
Orland Park, IL 60462



* Measurements and Plans are Approximate. Not for Construction or Legal Use.

10759 Winterset Dr. Orland Park, IL 60467

Second Level



* Measurements and Plans are Approximate. Not for Construction or Legal Use.



Ruben Vallejo
RE/MAX Synergy

Cell: (708) 560-3499
Email: ruvallejo@aol.com
Office: 15607 South Harlem Avenue
Orland Park, IL 60462