

Point Plaza East Buildings 2 & 3

6840 & 6860 Capitol Blvd
Tumwater, WA

Building 2 (6860)

4th Floor: 3,773 & 2,813 SF

Building 3 (6840)

1st Floor: 6,877 SF

3rd Floor: 6,643 SF

\$18.00 + NNN

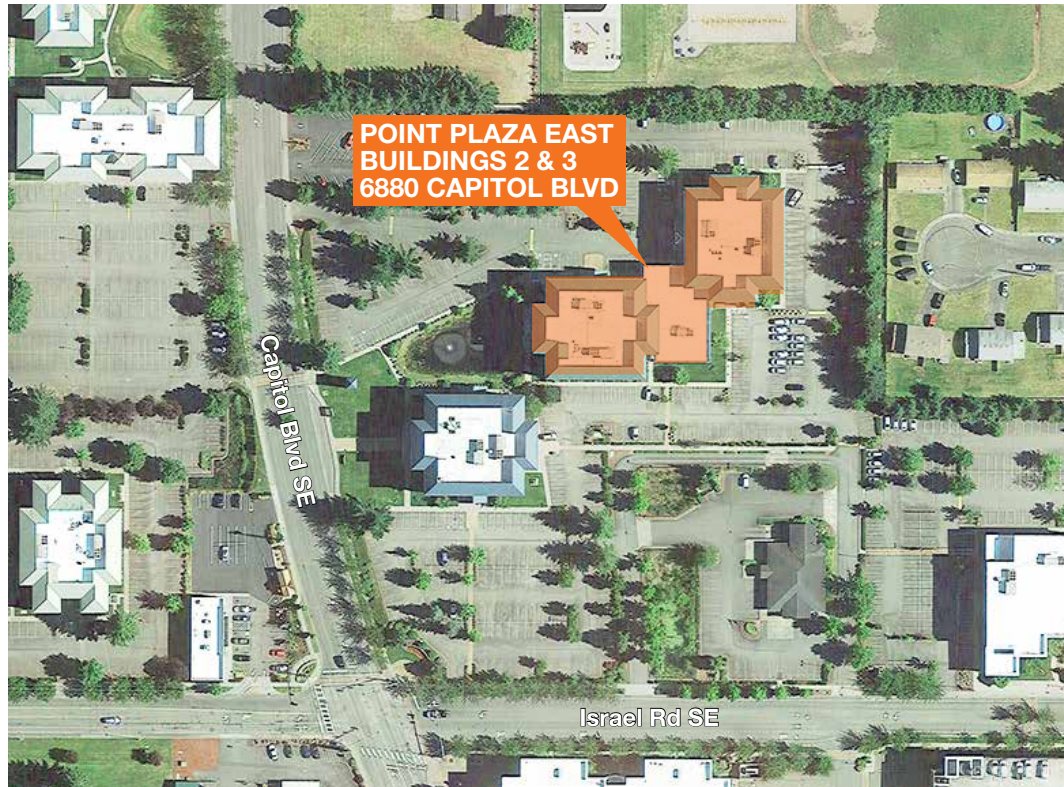
On site, after hours security

On site deli/coffee

Great location for non-profit

Landlord offering aggressive tenant
improvement allowance

On bus line, close to amenities and
services



Building



Contact

Evan Parker

360.705.0174

eparker@kiddermathews.com

Amy Evans

360.705.1377

aevans@kiddermathews.com

6860 Capitol Blvd, Building 2



**BUILDING 2
FOURTH FLOOR**

Contact

Evan Parker
360.705.0174
eparker@kiddermathews.com

Amy Evans
360.705.1377
aevans@kiddermathews.com

6840 Capitol Blvd, Building 3



Contact

Evan Parker
360.705.0174
eparker@kiddermathews.com

Amy Evans
360.705.1377
aevans@kiddermathews.com

6840 Capitol Blvd, Building 3



**BUILDING 3
THIRD FLOOR**

Contact

Evan Parker
360.705.0174
eparker@kiddermathews.com

Amy Evans
360.705.1377
aevans@kiddermathews.com