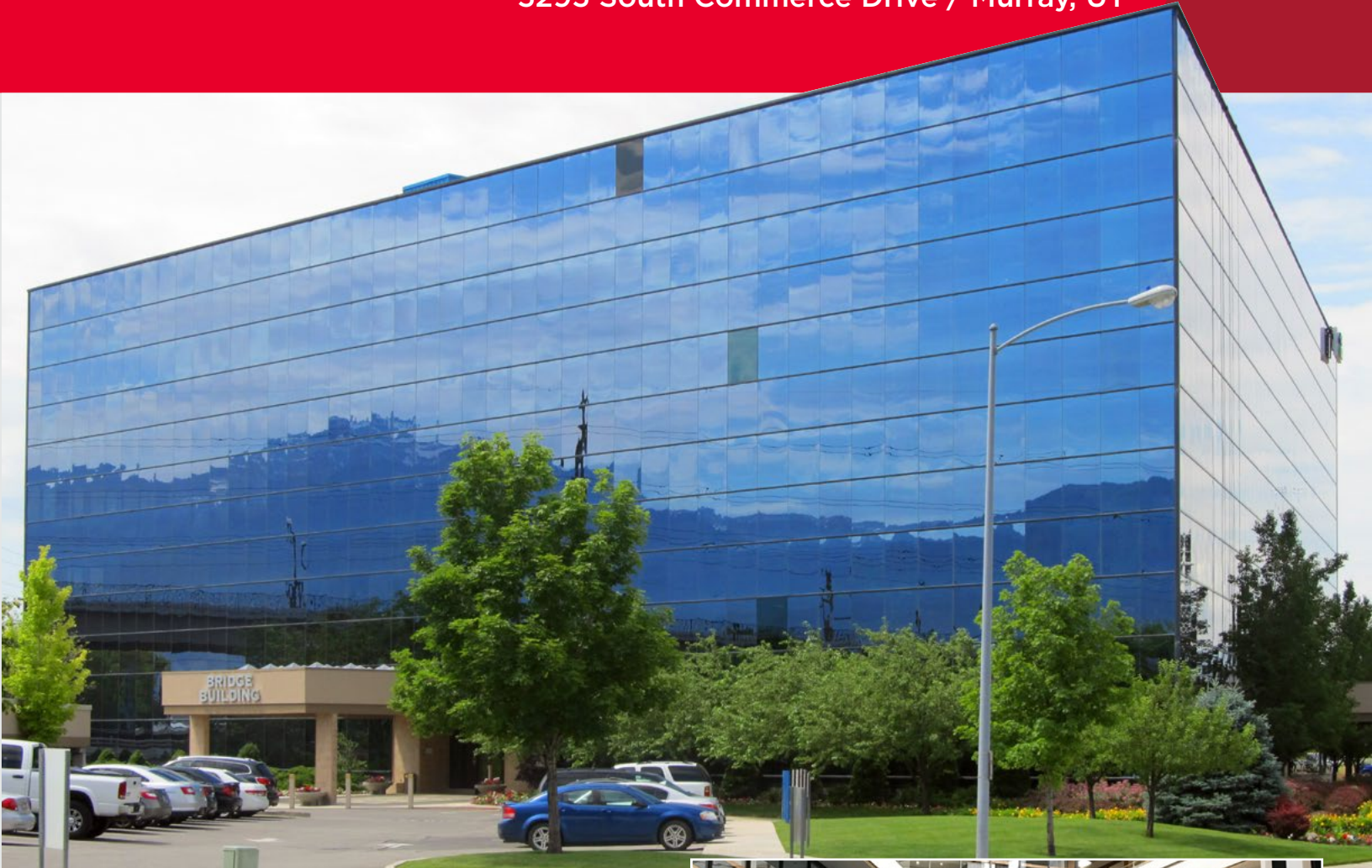




FOR LEASE

Bridge Building

5295 South Commerce Drive / Murray, UT



Property Features

- Available space ranging from 1,000 SF – 40,000 SF
- Asking Rate: \$22.00/SF, full service
- 3.34/1,000 parking
- Covered and surface parking available
- On-site fitness center
- Freeway visibility
- Direct access to I-15
- Great window lines providing natural light throughout



Mike Richmond
Executive Director
+1 801 303 5434
mike.richmond@cushwake.com

Dana Baird, CCIM
Executive Director
+1 801 303 5526
dana.baird@cushwake.com

170 South Main Street Suite 1600
Salt Lake City, UT 84101
Main +1 801 322 2000
Fax +1 801 322 2040
cushmanwakefield.com



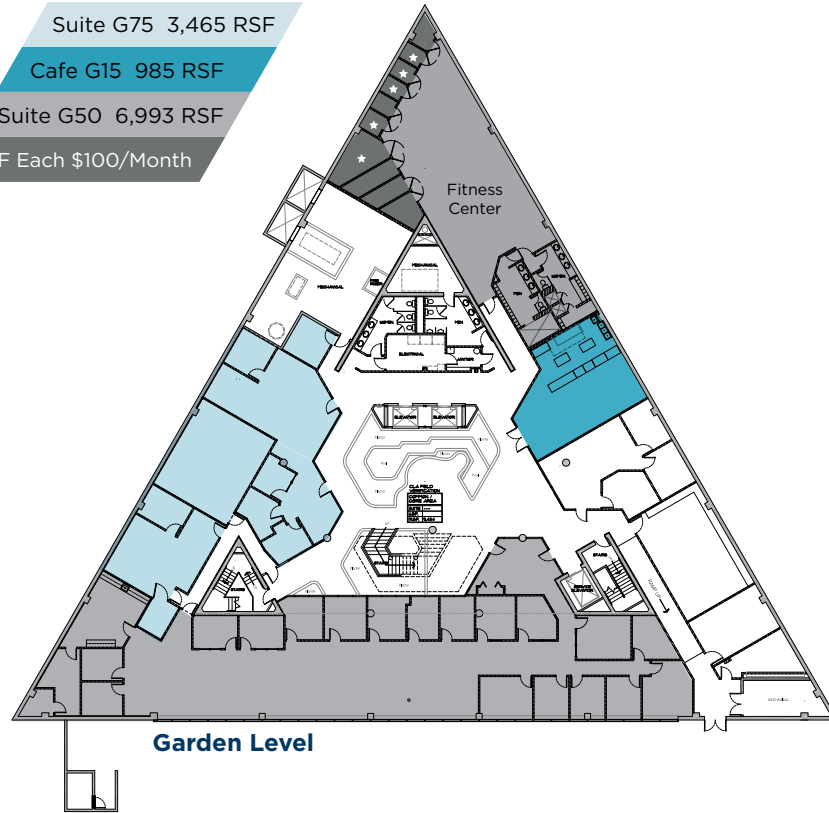
FOR LEASE
Bridge Building
5295 South Commerce Drive / Murray, UT

Suite G75 3,465 RSF

Cafe G15 985 RSF

Suite G50 6,993 RSF

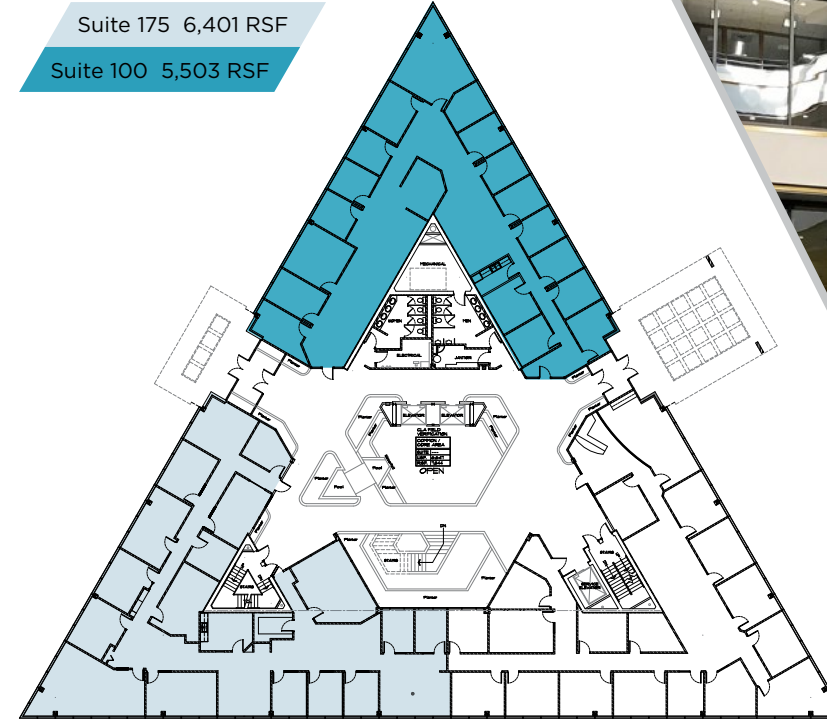
Storage Lockers Approx. 33 SF Each \$100/Month



Garden Level

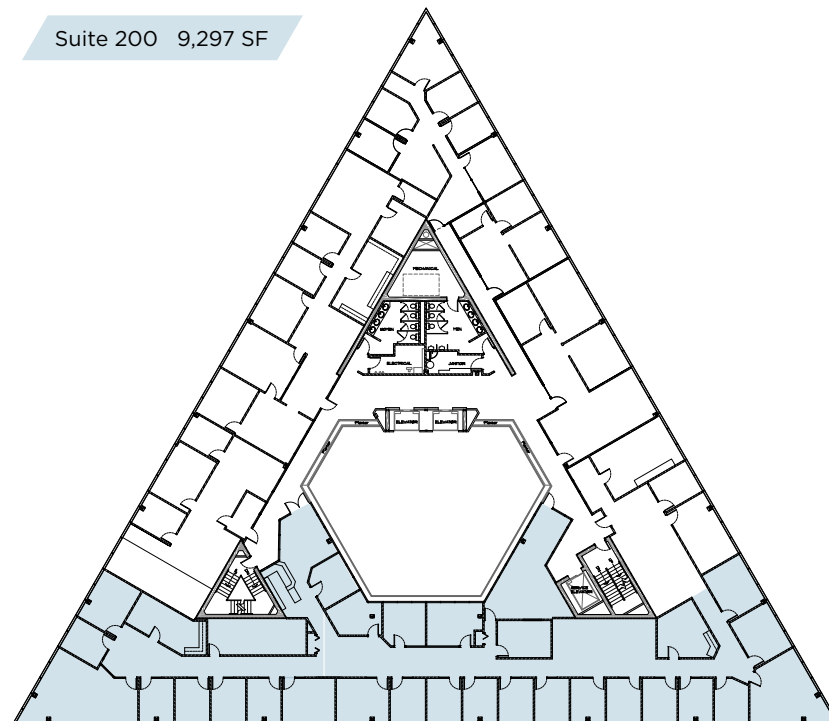
Suite 175 6,401 RSF

Suite 100 5,503 RSF



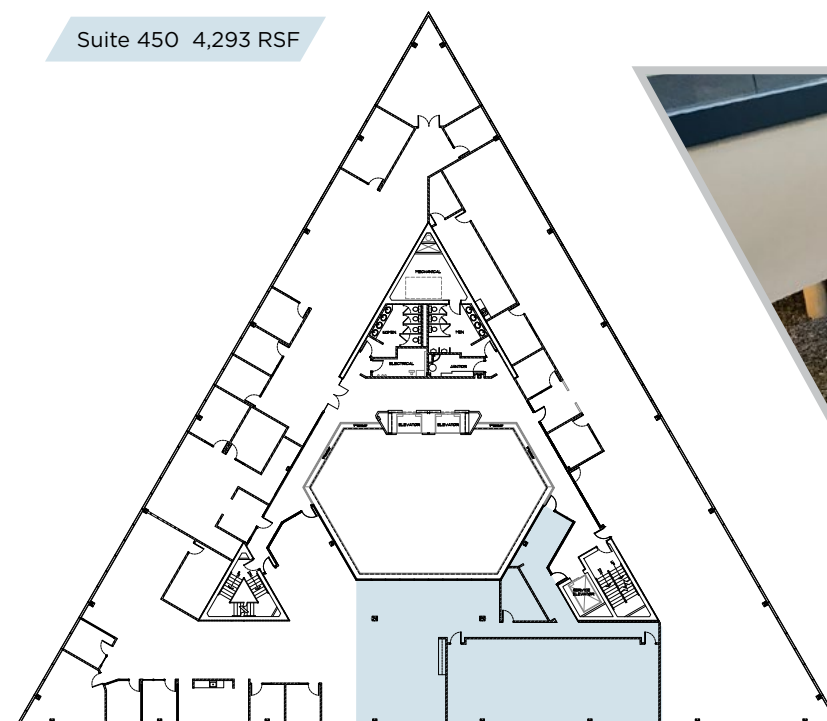
First Level

Suite 200 9,297 SF

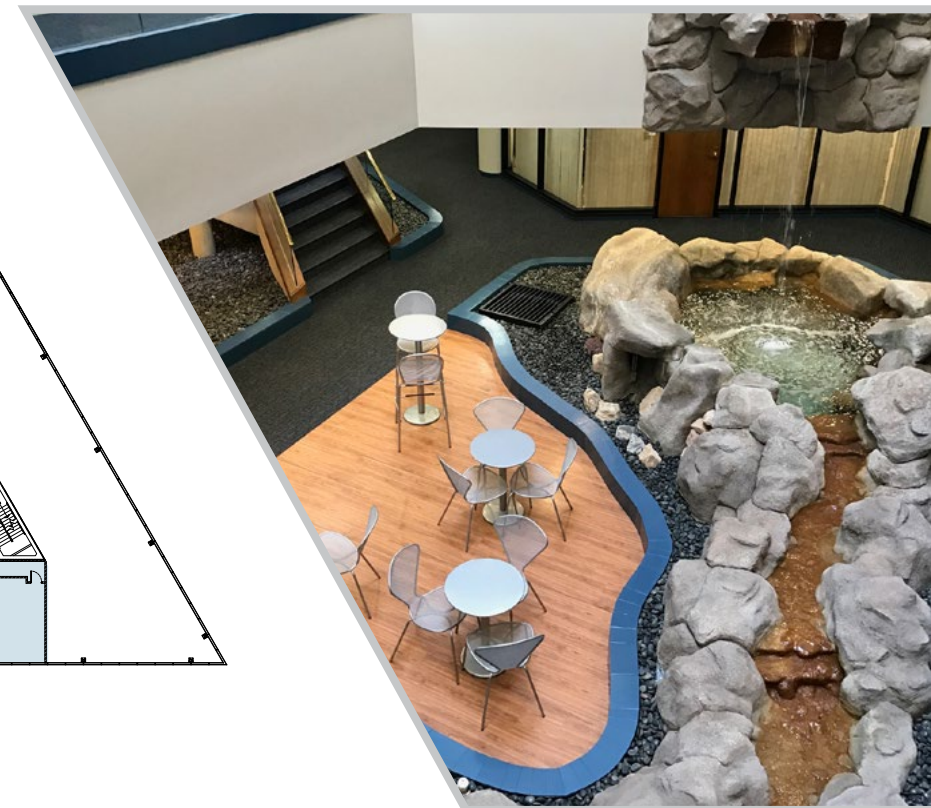
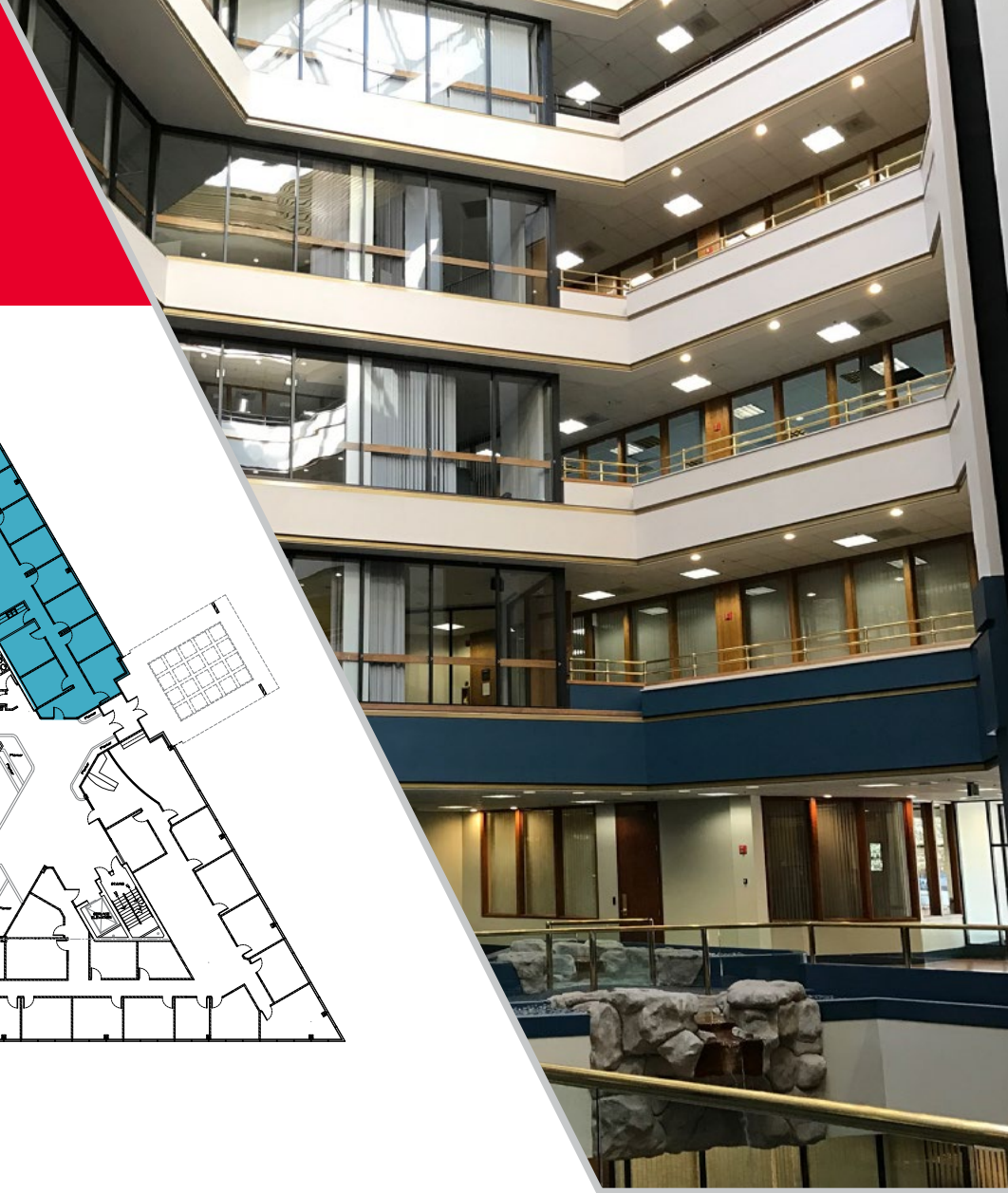


Second Level

Suite 450 4,293 RSF



Fourth Level



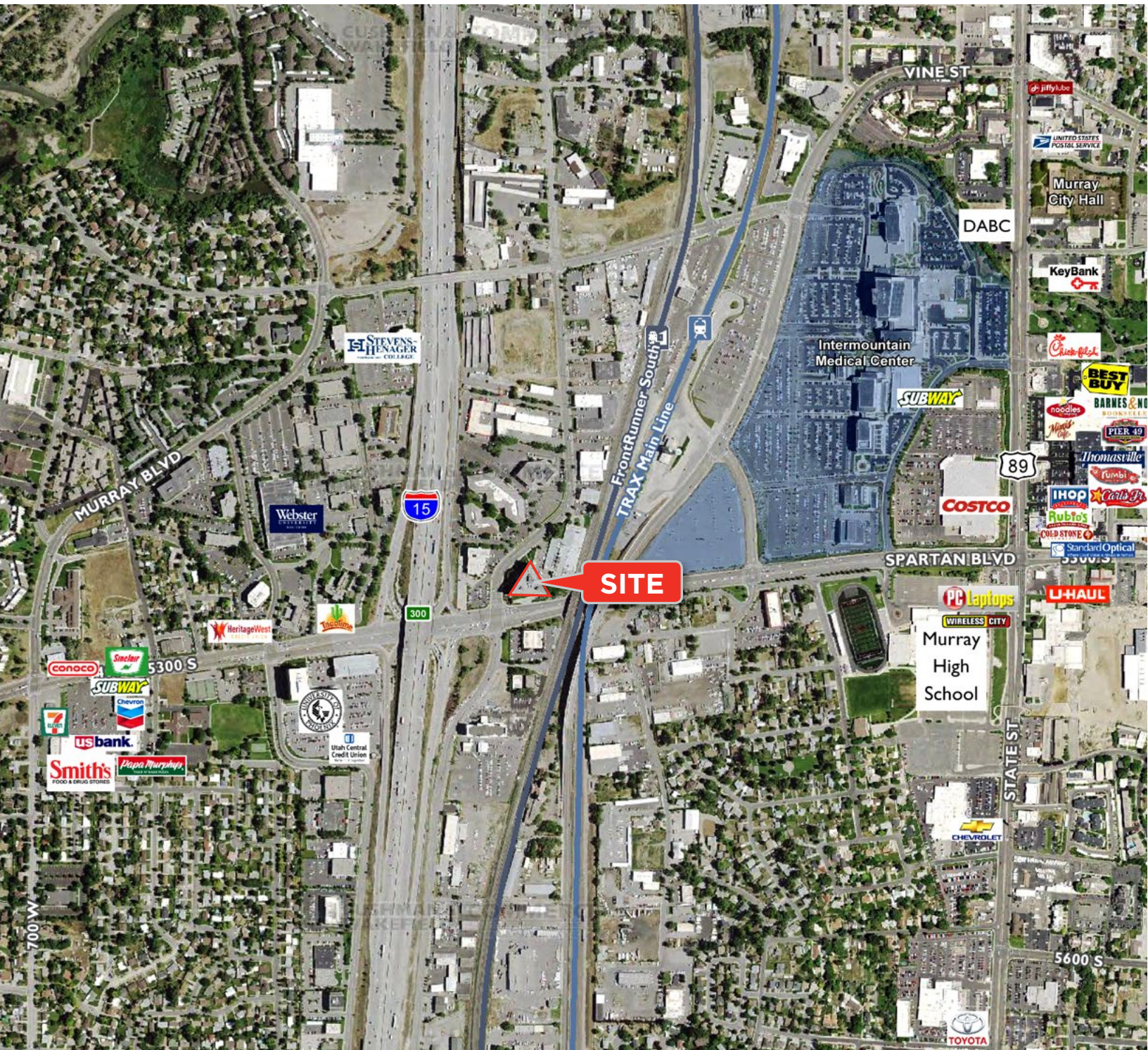


**CUSHMAN &
WAKEFIELD**

FOR LEASE

Bridge Building

5295 South Commerce Drive / Murray, UT



Mike Richmond
Executive Director
+1 801 303 5434
mike.richmond@cushwake.com

Dana Baird, CCIM
Executive Director
+1 801 303 5526
dana.baird@cushwake.com

170 South Main Street Suite 1600
Salt Lake City, UT 84101
Main +1 801 322 2000
Fax +1 801 322 2040
cushmanwakefield.com