

LAKEs AT TELAGA PHASE 3

EXCLUSIVE LISTING | 23223 Kingsbury Rd, Middleton, ID 83644

OFFERING Land Advisors Organization is pleased to present the third and final phase of the highly desirable Lakes at Telaga residential community in Middleton, Idaho

LOCATION

Property is located on the west side of Kingsbury Road, approximately ½ mile north of Highway 44

SIZE 35.19 +/- Acres ; Preliminary Plat has 32 single-family residential lots.

ASKING PRICE Submit All Offers

ZONING R-3

ENTITLEMENTS Development Agreement is Active. Plat is approved for 32 single-family residential lots. Construction Drawings are nearing completion.

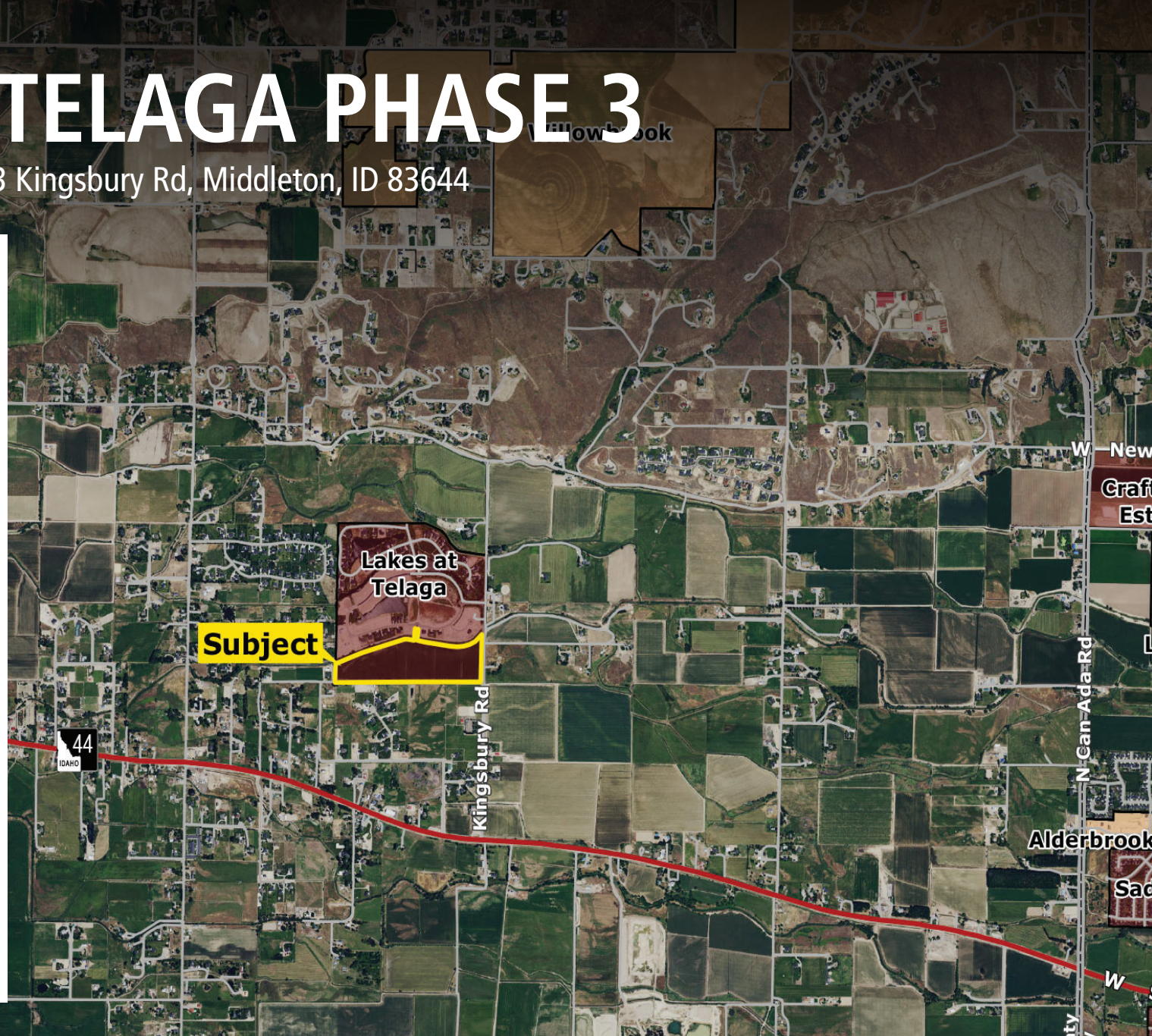
UTILITIES Sewer and Water are both adjacent to the site.

PARCEL R3383301000

PROPERTY TAXES \$1,345.14 (2018)

HIGHLIGHTS

- Prime residential development property.
- Property is part of one of the most sought-after communities in the Middleton area.
- Conveniently located between Middleton and Star



Tyler Johnson | tjohnson@landadvisors.com

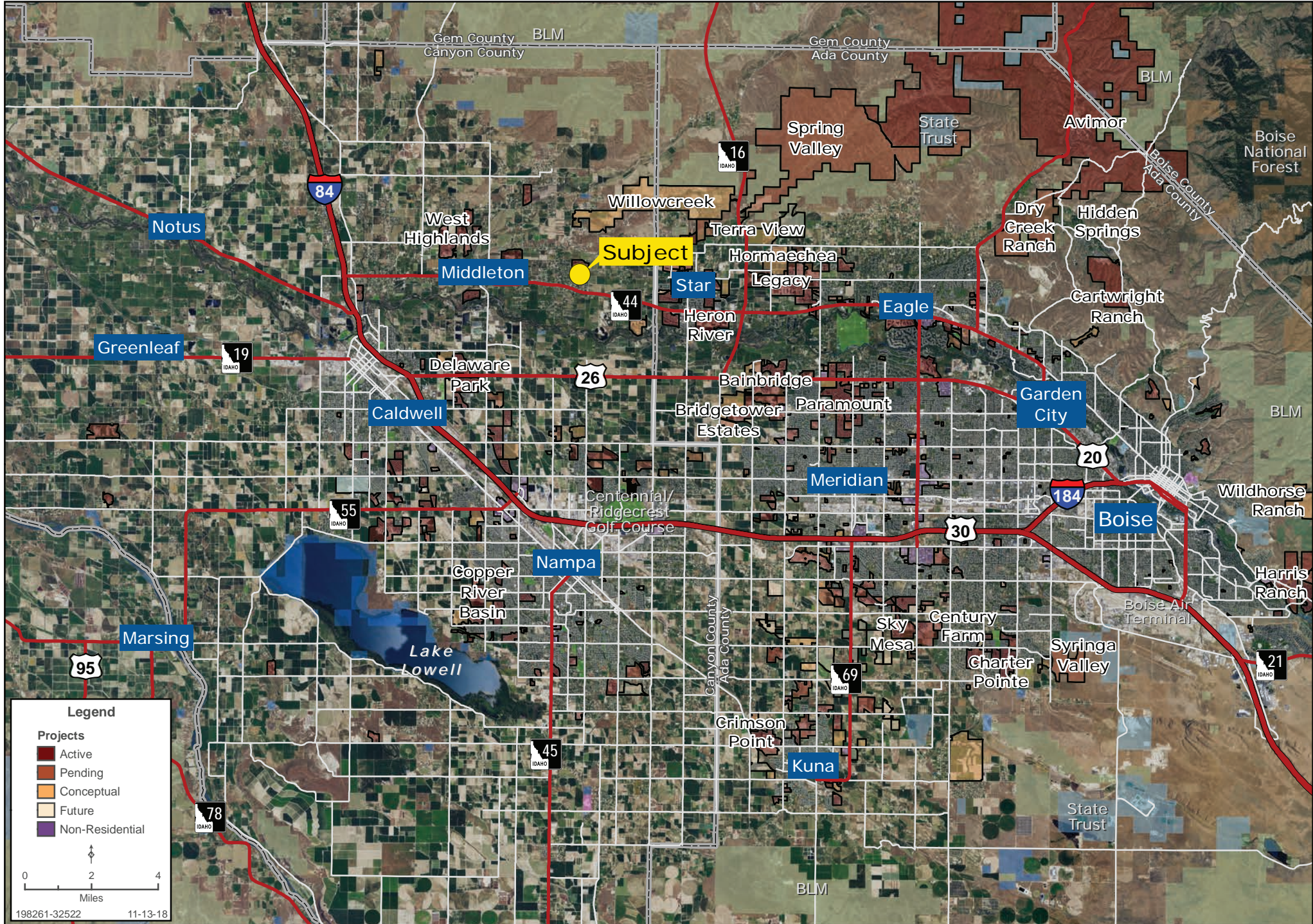
3597 E Monarch Sky Lane, Suite F-240, Meridian, ID 83646 ph. 208.866.3579 | www.landadvisors.com

The information contained herein is from sources deemed reliable. We have no reason to doubt its accuracy but do not guarantee it. It is the responsibility of the person reviewing this information to independently verify it. This package is subject to change, prior sale or complete withdrawal. IDCanyon198261_11.20.18



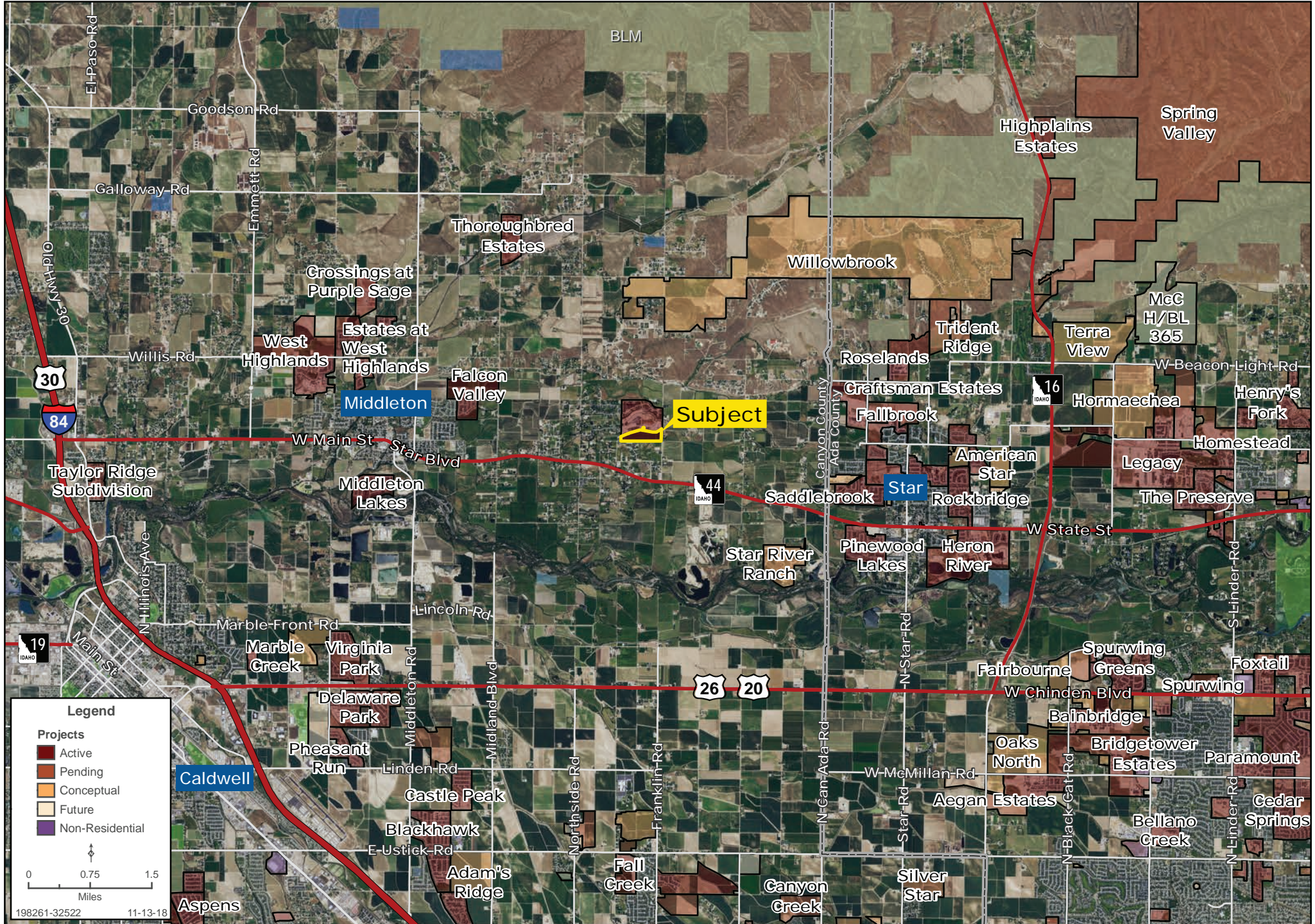
LAKES AT TELAGA PHASE 3 METRO MAP

Tyler Johnson | 208.866.3579 | www.landadvisors.com



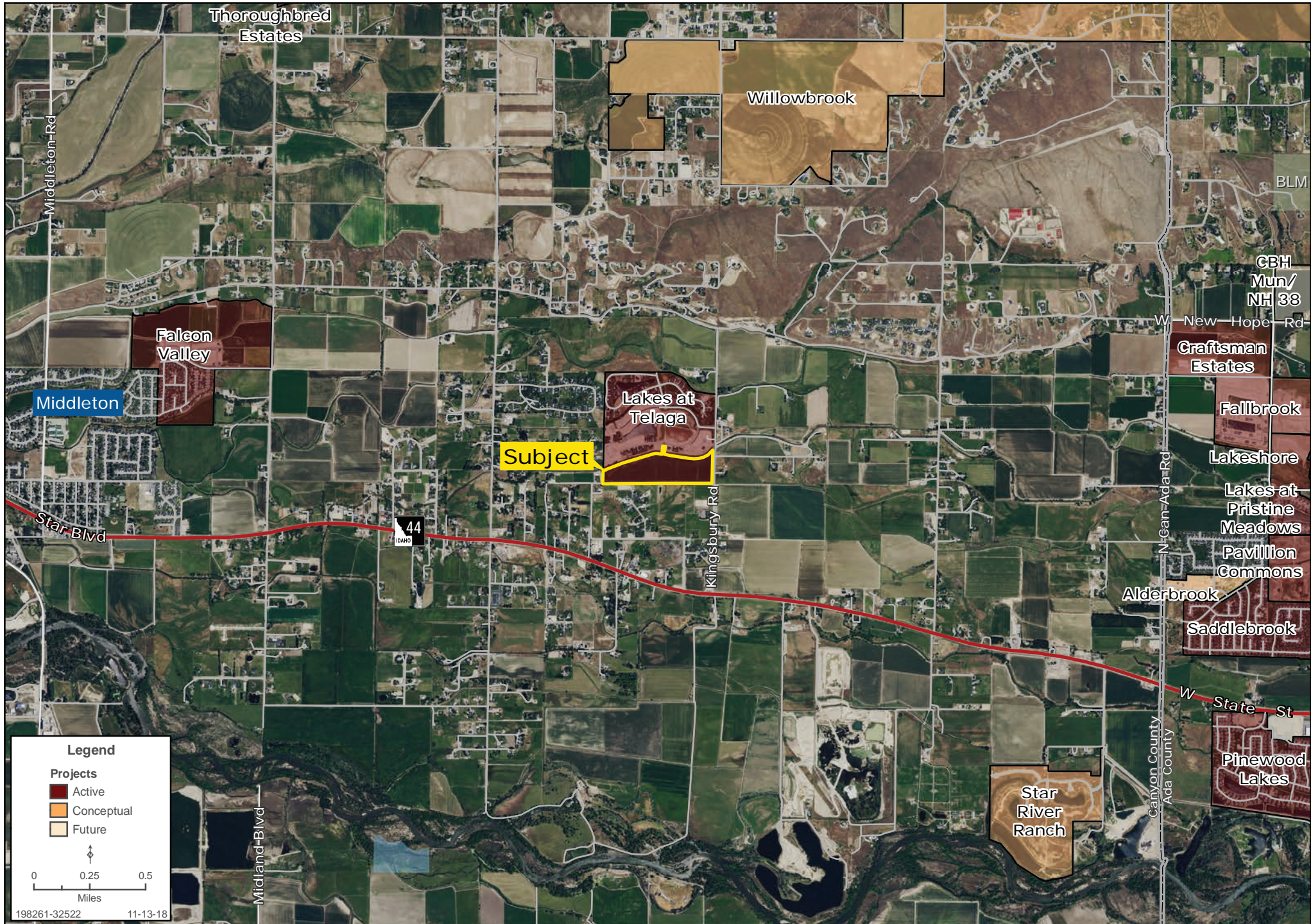
LAKES AT TELAGA PHASE 3 SURROUNDING DEVELOPMENT MAP

Tyler Johnson | 208.866.3579 | www.landadvisors.com



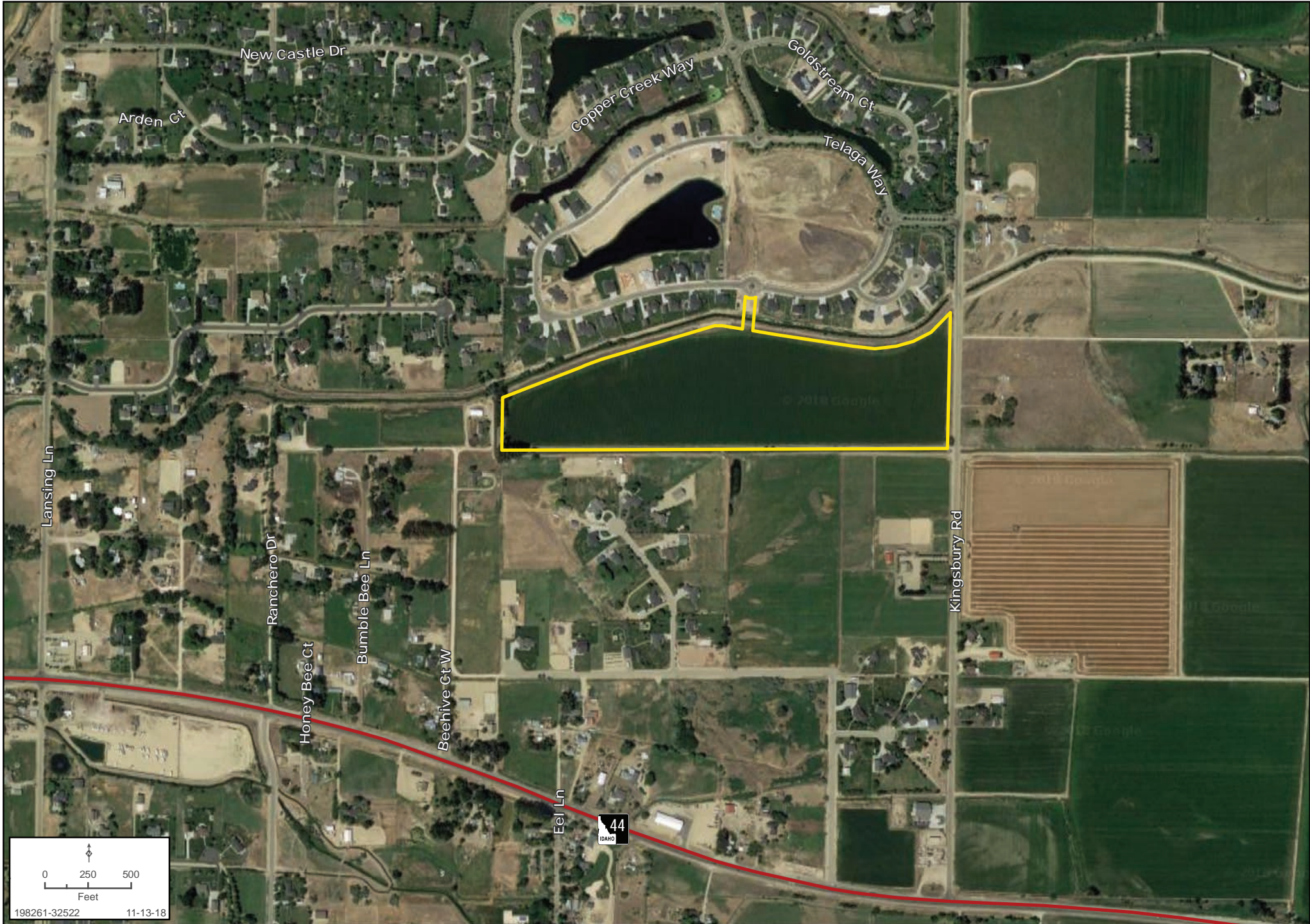
LAKES AT TELAGA PHASE 3 SURROUNDING AREA MAP

Tyler Johnson | 208.866.3579 | www.landadvisors.com



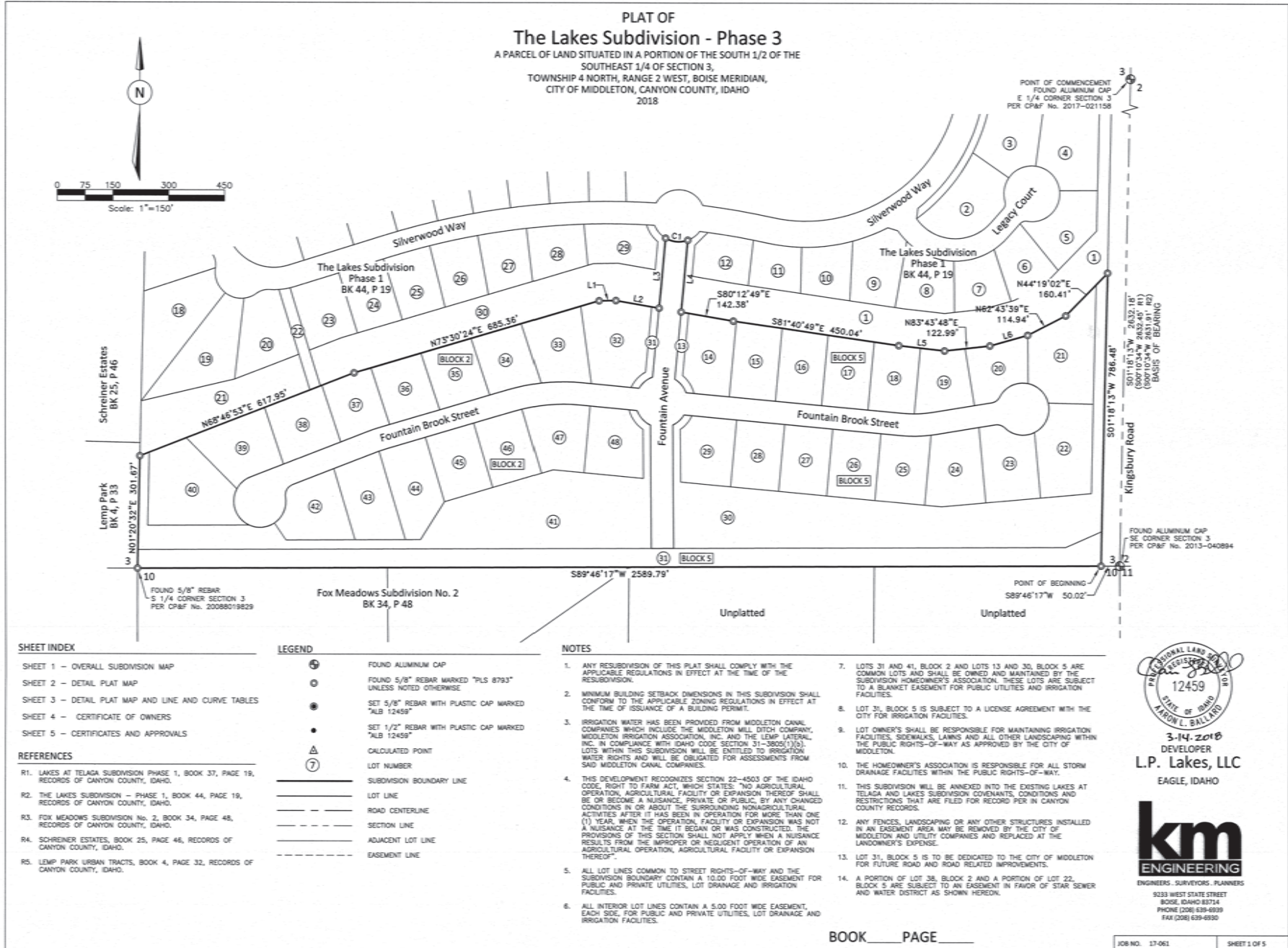
LAKES AT TELAGA PHASE 3 PROPERTY DETAIL MAP

Tyler Johnson | 208.866.3579 | www.landadvisors.com



0 250 500
Feet
198261-32522 11-13-18

LAKES AT TELAGA PHASE 3 | PLAT MAP



K.M. ENGINEERING
ENGINEERS, SURVEYORS, PLANNERS
9333 WEST STATE STREET
BOISE, IDAHO 83714
PHONE (208) 639-8939
FAX (208) 639-8939

L.P. Lakes, LLC
EAGLE, IDAHO

3-14-2018
DEVELOPER

LAKES AT TELAGA PHASE 3 | PROPERTY PHOTO



LAKES AT TELAGA PHASE 3 | PROPERTY PHOTO



LAKES AT TELAGA PHASE 3 | PROPERTY PHOTO



LAKES AT TELAGA PHASE 3 | PROPERTY PHOTO

