



# 207 WEST STREET | CROMWELL, CT | STOP & SHOP GAS CENTER



## AVAILABLE: 2,000± SF

\$25 SF GROSS + UTILITIES

**PRIME RETAIL OPPORTUNITY!**

This highly visible location just off Interstate 91, and right on the main drag (Rt. 372) logs a daily traffic count of 22,900± vehicles!

**AREA RETAILERS:** Homegoods, Shoprite, Starbucks, Victoria's Secret, Ann Taylor Loft, Aerosoles, Chico's, Massage Envy and many more!

**12,000± VPD**

## A TRUE EXCLUSIVE... CALL FOR THE DETAILS!

**AGENTS:**

**Dominick Musilli**

203.529.4629 | dm@truecre.com

**Adam Zeiberg**

203.557.9071 | az@truecre.com

**Joe Baranowski**

203.762.6174 | jb@truecre.com





**207 WEST STREET | CROMWELL, CT | STOP & SHOP GAS CENTER**



**NEW CUSTOMERS INCLUDED!**

**THEY'RE JUST KILLING TIME WHILE THEY'RE FILLING UP...  
SO GIVE THESE GAS CUSTOMERS THE CHANCE TO PICK SHOP IN YOUR STORE...  
THEY'LL COME BACK AGAIN, AND AGAIN!**





# 207 WEST STREET | CROMWELL, CT | STOP & SHOP GAS CENTER



## READY FOR YOUR BUSINESS!

**2000 SF, JUST WAITING FOR YOUR BUILDOUT!**

WITH TONS OF TRAFFIC, SITUATED AT A SIGNALIZED INTERSECTION,  
AND WITH LOCAL RETAILERS STOP & SHOP GROCERY, WENDY'S AND MORE...





**TRUE**  
COMMERCIAL REAL ESTATE LLC

**207 WEST STREET | CROMWELL, CT | STOP & SHOP GAS CENTER**



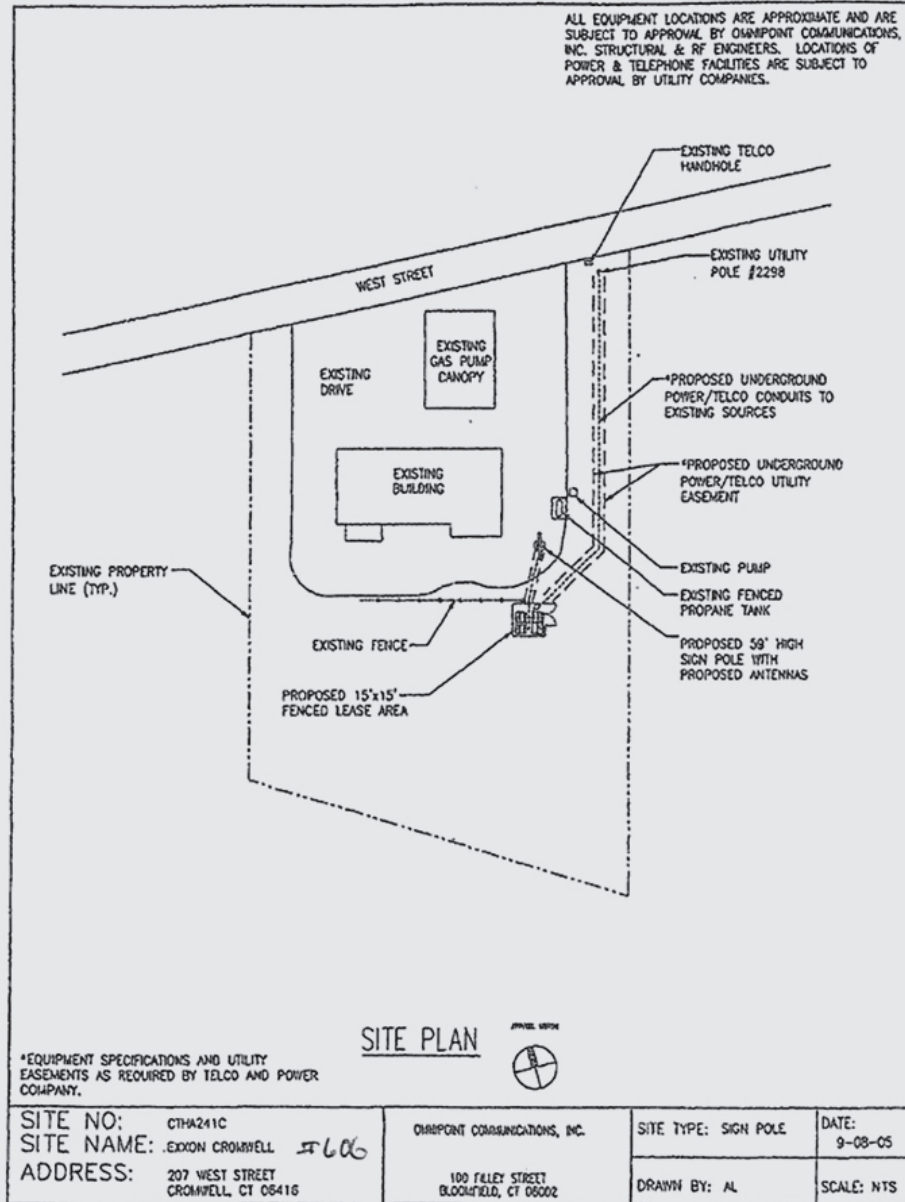
**PREVIOUSLY A DRIVE-THRU CAR WASH!**

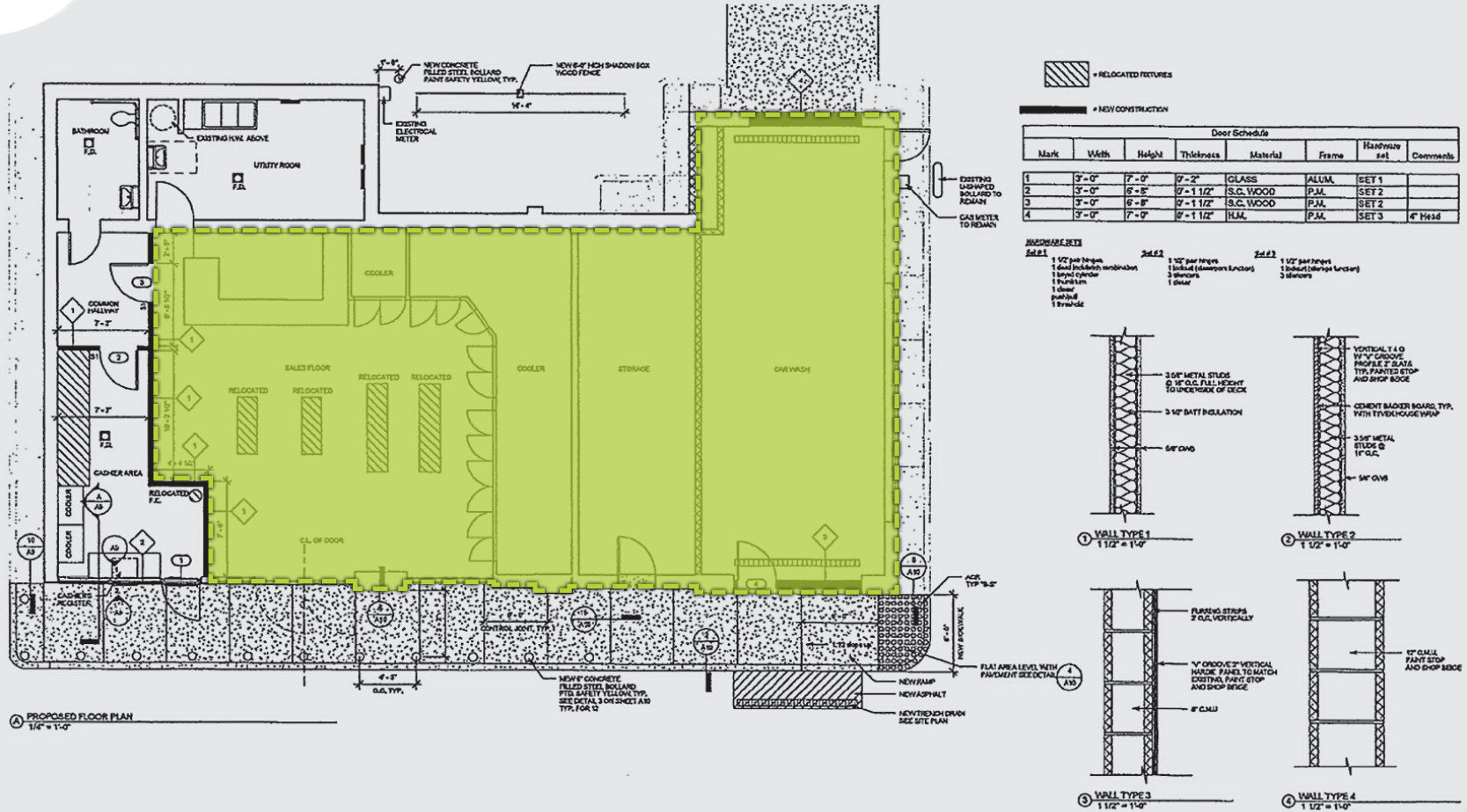
THIS COULD BE THE PERFECT LOCATION FOR A DRIVE-THRU SERVICE.

THE IMAGE SHOWN IS A CONCEPT RENDERING TO SUGGEST WHAT COULD BE DONE WITH THIS LOCATION.



truecre.com





**FINISH SCHEDULE NOTES**

ROOM NAME	FLOOR	WALLS	CEILING
CASHIER AREA	EXIST	FDG	VCB NEW 2 X 2 ACT
COMMON (HALLWAY)	EXIST	FID	VCB NEW 2 X 2 ACT



# 207 WEST STREET | CROMWELL, CT | STOP & SHOP GAS CENTER





# 207 WEST STREET | CROMWELL, CT | STOP & SHOP GAS CENTER

