

454845

T57N, R2W, S10

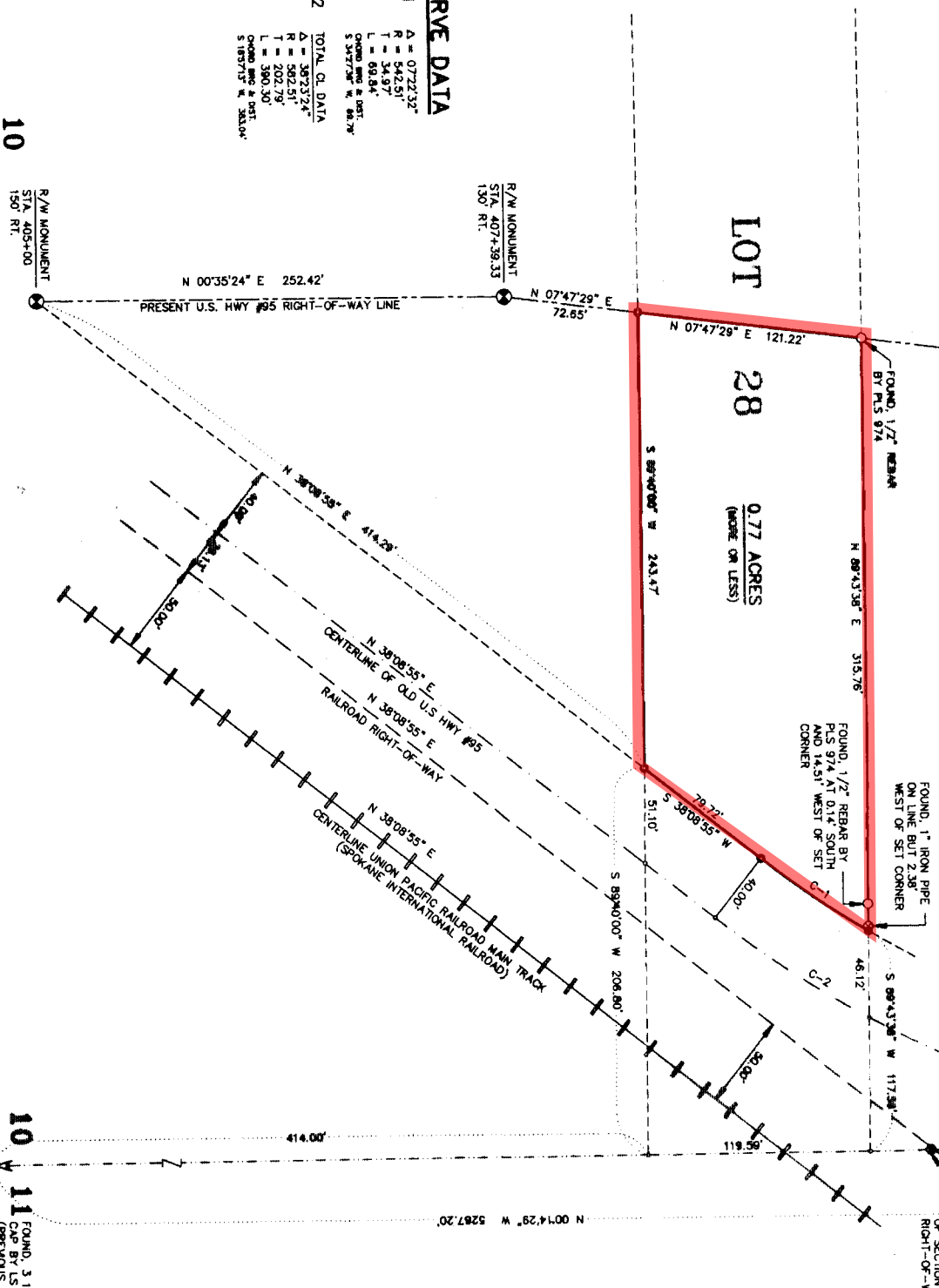
RECORD OF SURVEY

AL TRUMP

A PARCEL OF LAND LYING IN A PORTION OF LOT 28 OF A SECTIONAL SUBDIVISION OF SECTION 10, TOWNSHIP 57 NORTH, RANGE 2 WEST, BOISE MERIDIAN, BONNER COUNTY IDAHO, AS RECORDED IN BOOK 1 OF PLATS, PAGE 128, RECORDS OF BONNER COUNTY, IDAHO.

LOT 28

0.77 ACRES
(MORE OR LESS)



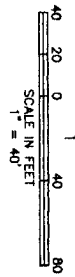
CURVE DATA

C-1	Δ = 07°22'32"
	R = 542.51'
	L = 34.81'
	Chord = 69.18'
	Chord BEG. & END = S 34°27'30" W 68.79'
C-2	TOTAL CL. DATA
	R = 3823.27'
	L = 582.51'
	T = 202.79'
	L = 380.30'
	Chord BEG. & END = S 18°37'15" W 385.04'

15
S 1/4
10
R/W MONUMENT
STA. 405+00
150' RT.

S 89°40'00" W 2540.66'
BASIS OF BEARING

WELCH ENGINEERING, INC. Sandpoint, ID.



BASIS OF BEARING

THE BEARING OF SOUTH 89°40'00" WEST ALONG THE SOUTH LINE OF SECTION 10 IS BASED UPON A PREVIOUS SURVEY BY PLS 882, AND FILED AS INSTRUMENT NO. 215514, RECORDS OF BONNER COUNTY, IDAHO.

LEGEND

- ⊙ SECTIONAL CORNER, AS NOTED.
- ⊙ FOUND, RIGHT-OF-WAY MONUMENT, AS NOTED.
- ⊙ FOUND, IRON PIPE, AS NOTED.
- FOUND, REBAR, AS NOTED.
- COMPUTATION POINT, (NOT SET).
- SET, 5/8" DIA. X 30" LONG REBAR WITH YELLOW PLASTIC CAP.

SURVEYOR'S CERTIFICATION

I, ROBERT G. BRISTOL, PLS 882, STATE OF IDAHO, DO HEREBY CERTIFY THAT THIS DRAWING IS A CORRECT REPRESENTATION OF A SURVEY MADE BY ME OR UNDER MY DIRECT SUPERVISION DURING OCTOBER, 1994. DATED THIS 17th DAY OF OCTOBER, 1994.



COUNTY RECORDER

DATED THIS 25 DAY OF OCT 1994.
INSTRUMENT NO. 454845

Robert G. Bristol

10 11 FOUND, 3 1/4" ALUM. CAP BY LS 613 (PREVIOUS SURVEY)

3 2 FOUND, SPIKE IN CL. HWY #95 (PREVIOUS SURVEY)

FOUND, 1/2" REBAR BY PLS 974 AT 0.14 SOUTH AND 14.51 WEST OF SET CORNER

FOUND, 1" IRON PIPE ON LINE BUT 2.38 WEST OF SET CORNER

FOUND, 1/2" REBAR BY PLS 974

15
FALLS ON MANHOLE RE-ESTABLISHED FROM ACCESSORIES (PREVIOUS SURVEY)