

BOWLING GREEN DRIVE

N 42°36'10"W
GRASS
CONCRETE

176.85' (DESC. & CALC.)
176.84' ± (TAX MAP)
DROP CURB

OLD COUNTRY ROAD

N 67°41'30"E

CONCRETE CURB
CONCRETE

213.24' (DESC. & CALC.)
213.20' ± (TAX MAP)
PROJECTION:
COMMERCIAL SIGNS
0.5-2.5'
FROM WALL

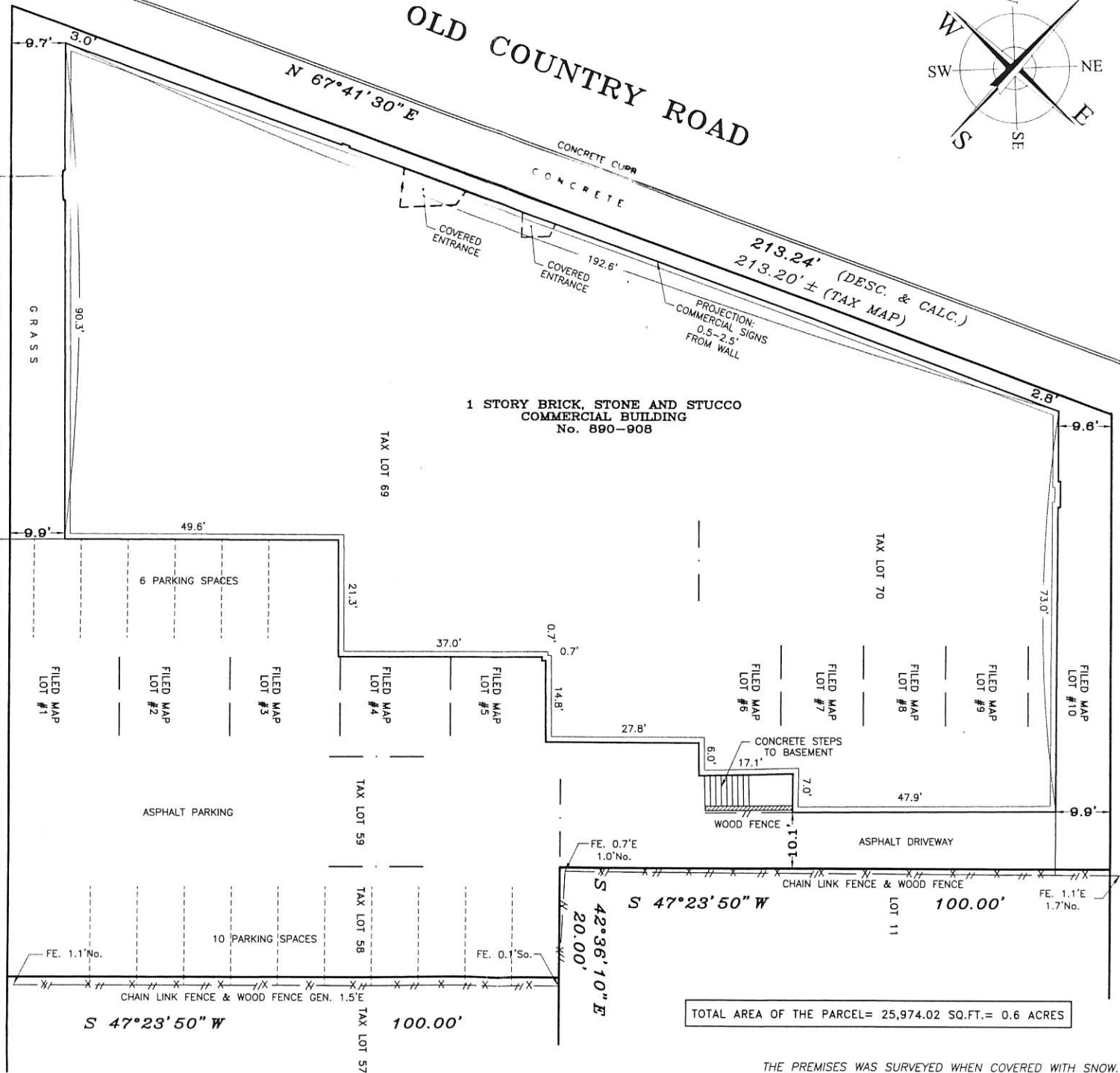
1 STORY BRICK, STONE AND STUCCO
COMMERCIAL BUILDING
No. 890-908

S 42°36'10"E
CONCRETE
82.89'

CONCRETE CURB

DROP CURB

MERRILLON AVENUE



TOTAL AREA OF THE PARCEL= 25,974.02 SQ.FT.= 0.6 ACRES

THE PREMISES WAS SURVEYED WHEN COVERED WITH SNOW.
ELEMENTS OF POSSESSION NOT VISIBLE AT THE TIME OF THE