

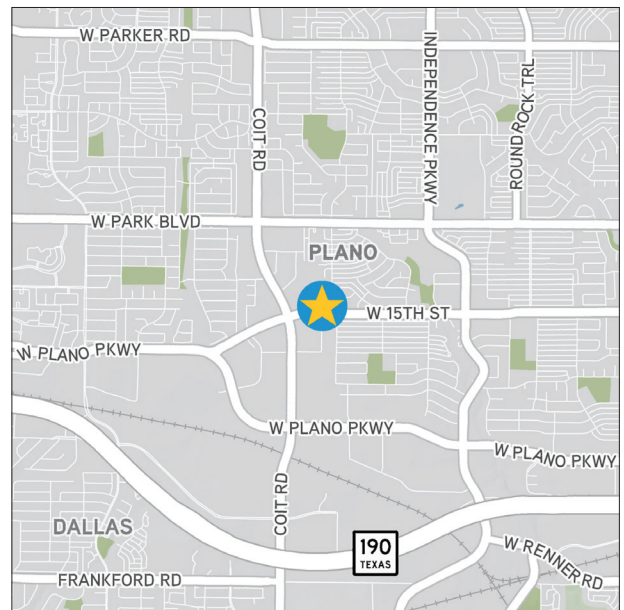
MEDICAL OFFICE SPACE | FOR LEASE

PLANO MEDICAL PAVILION

> 3801 W 15th St. Plano, TX 75075

Property Highlights

- 3 story - 82,602 SF
- Constructed in 1982
- Located on the Medical City Plano Campus (513 beds)
- Strong ownership and local management
- Monument signage available
- Abundant parking ratio of 7.8/1,000
- Convenient patient drop-off
- Small 2nd generation suites available
- Practices include Cardiology, Mammography, & Scanning
- Quest Diagnostics on-site
- Competitive Full Service rates



Dallas Office

2300 N. Field Street, Ste. 2000
Dallas, Texas 75201

Transwestern.com

Chris Lipscomb

214.237.5022

chris.lipscomb@transwestern.com

Laney Underwood

214.237.5020

laney.underwood@transwestern.com

 **TRANSWESTERN**®

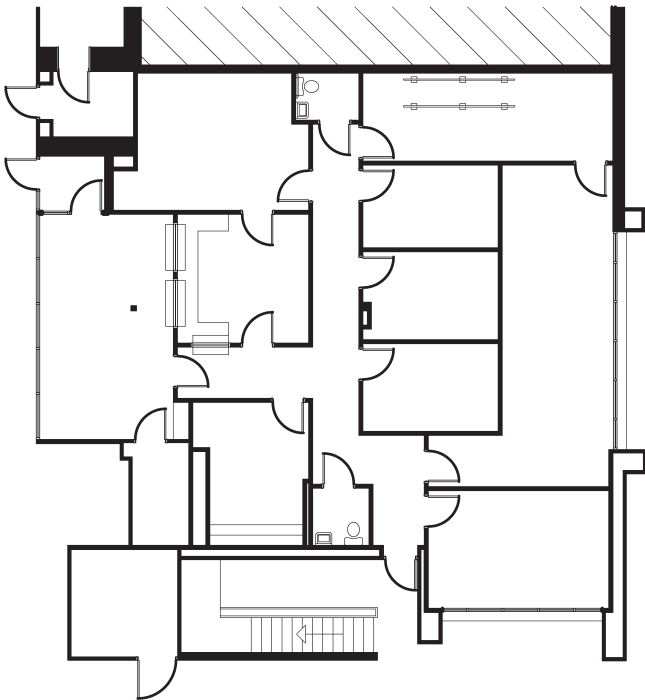
MEDICAL OFFICE SPACE | FOR LEASE



PLANO MEDICAL PAVILION

> 3801 W 15th St. Plano, TX 75075

Suite 155 - 2,785 RSF



Chris Lipscomb

214.237.5022

chris.lipscomb@transwestern.com

Laney Underwood

214.237.5020

laney.underwood@transwestern.com

Demographics

5 MILES

Total Population

351,015

Daytime Population

441,060

Housing Units

2019

156,809

2024

168,232

Median HH Income

2019

\$81,570

2024

\$88,501

Median Home Value

2019

\$316,829

2024

\$341,820

 **TRANSWESTERN**®