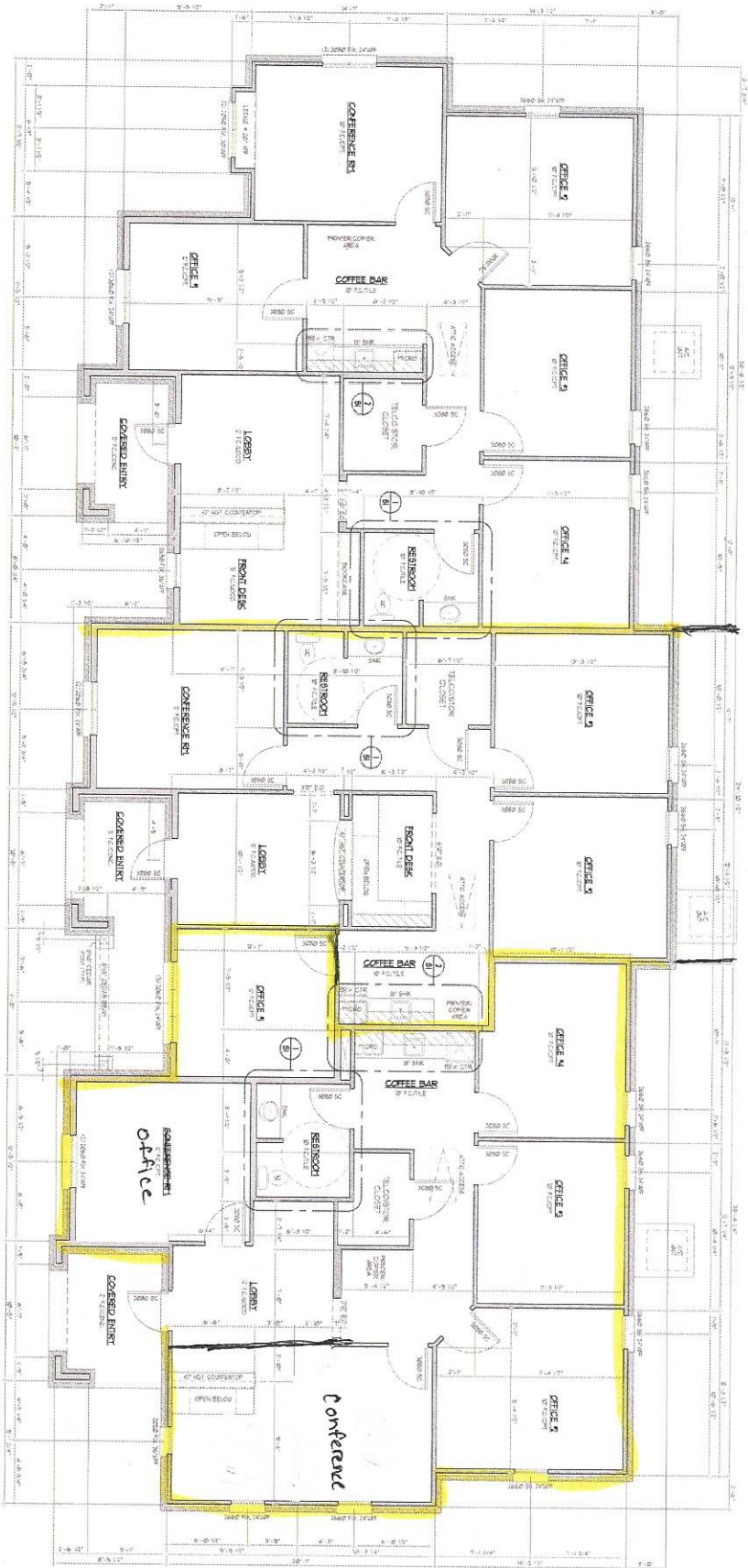


SUITE A

SUITE B

SUITE C



**FLOOR PLAN**  
SCALE: 1/4" = 1'-0"



PLAN NORTH

**LEGEND**  
 CHANGING INTERIOR PARTITION WALL  
 INTERIOR WALL  
 CONCRETE/CMU INTERIOR WALL

**GENERAL FRAMING NOTES:**  
 NOTE 1: ALL CONSTRUCTION TO COMPLY WITH APPLICABLE BUILDING CODES, DEED RESTRICTIONS AND RELATED REGULATIONS.  
 NOTE 2: ALL CEILING HEIGHTS TO BE A MINIMUM OF 8'-0" UNLESS OTHERWISE NOTED.  
 NOTE 3: ALL ELECTRICAL AND OTHER OPENINGS TO BE A MINIMUM OF 6" ABOVE FINISHED FLOOR OR CEILING.  
 NOTE 4: ALL DOOR SWEEPS, AS WELL AS SLEEP EDGES AND VENTS AT ALL OTHER LOCATIONS.

NOTE 5: REFER TO ARCHITECTURAL DRAWINGS FOR ALL APPLIANCES, FIXTURES, AND OTHER FINISHES AND RELATED SPECIFICATIONS.  
 NOTE 6: ALL WINDOWS THAT HAVE JAMBES WITHIN 2'-0" OF ANY DOOR FRAME (WITHIN 1'-0" OF ANY WINDOW FRAME) SHALL BE ABOVE THE FINISHED FLOOR. SHOWN SHALL BE "TEMPORARY" CONSIDER WINDOW REPAIR CODES REQUIREMENTS (SCHEDULE 1).  
 NOTE 7: LOCATE KITCHEN COOKTOP VENTHOOD EXHAUST FAN TYPICAL IN THE ATTIC.  
 NOTE 8: SEAL ALL WALL, FLOOR, AND CEILING PENETRATIONS.

NOTE 9: VERIFY THE DIMENSIONS AND OBJECTS BETWEEN ACTUAL FIELD CONDITIONS AND THE CONSTRUCTION DOCUMENTS IN ACCORDANCE WITH APPLICABLE CODES.  
 NOTE 10: VENT CLOTHES DRYER TO OUTSIDE THROUGH EXTERIOR WALLS EXCEPT 9" FEET IN HEIGHT TO BE DETERMINED BY LOCAL CODES.  
 NOTE 11: LOCATE SMOKE ALARMS AT 7'-0" AFF. UNLESS NOTED OTHERWISE ON THE PLAN.  
 NOTE 12: SEAL ALL WALL, FLOOR, AND CEILING PENETRATIONS.

NOTE 13: FROM DIMENSIONS IN PARAGRAPHS B, C, D, INTERIOR FINISHES SHALL BE DETERMINED TO ONE FACE OF STUD AT 3'-0" TYPICAL FROM FINISH FLOOR AT 3'-0" AFF. ACCEPTABLE ONLY TO 4" HEIGHT OR 8" FEET MAXIMUM. SHALL EXCEEDING 9" FEET IN HEIGHT SHALL BE DETERMINED BY LOCAL CODES.  
 NOTE 14: LOCATE SMOKE ALARMS AT 7'-0" AFF. UNLESS NOTED OTHERWISE ON THE PLAN.  
 NOTE 15: SEAL ALL WALL, FLOOR, AND CEILING PENETRATIONS.

**TOTAL SUITE SPACE**

SUITE A (A/C) SPACE: 1430 SQ. FT.  
 SUITE B (A/C) SPACE: 1054 SQ. FT.  
 SUITE C (A/C) SPACE: 1602 SQ. FT.

**TOTAL BUILDING SPACE**

GROUND LEVEL (A/C) SPACE: 4001 SQ. FT.  
 UPPER LEVEL (A/C) SPACE: 0 SQ. FT.  
 TOTAL (A/C) SPACE: 4001 SQ. FT.  
 COVERED SPACE: 76,128-SQ-730 SQ. FT.  
 AREA UNDER ROOF: 4291 SQ. FT.  
 GROSS SLAB: 4291 SQ. FT.  
 FIRE CODE (A/C) SPACE: 4001 SQ. FT.