

# 2310 N. Lincoln Avenue

Chicago, IL 60614 | Lincoln Park

## For Lease

Retail Property



- ▶ ±2,368 SF available
- ▶ Frontage along Lincoln Avenue
- ▶ Directly across from the Lincoln Commons which includes more than 100,000 SF of retail space and 580 luxury residential units
- ▶ Located in the heart of DePaul University with ±24,000 students
- ▶ 850-stall parking garage adjacent to the space
- ▶ Strong demographics throughout Lincoln Park
- ▶ Additional 1,584 SF basement available for storage

### DEMOGRAPHICS

	.25 MILE	.5 MILE	1 MILE
Estimated Population	4,805	17,065	61,925
Adj. Daytime Demographics	2,690	11,299	41,255
Estimated Households	3,033	10,721	36,430
Estimated Average Household Income	\$130,161	\$125,633	\$134,806

#### BILL COONEY

312.275.3127  
bill@baumrealty.com

#### TREVOR JACK

312.275.3128  
trevor@baumrealty.com



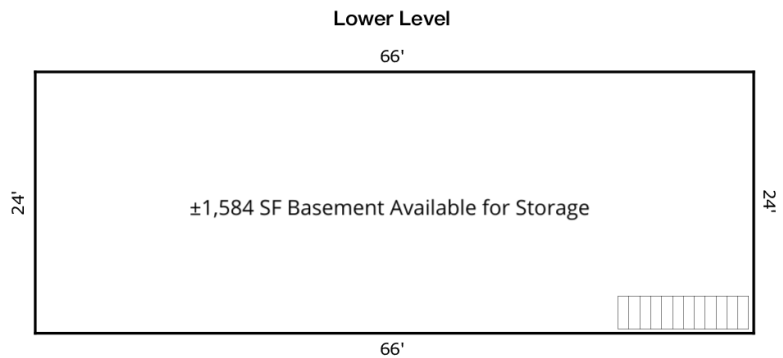
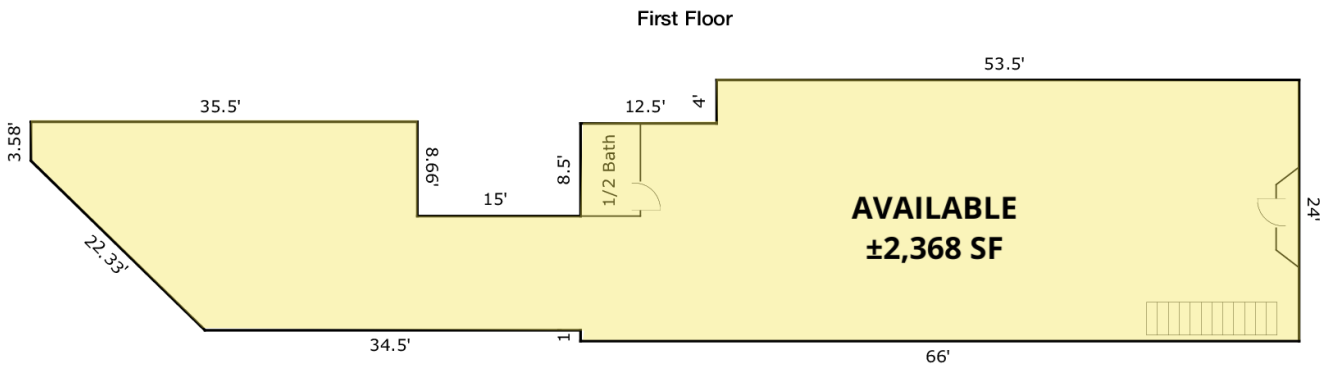
© 2018 All information supplied is from sources deemed reliable and is furnished subject to errors, omissions, modifications, removal of the listing from sale or lease, and to any listing conditions, including the rates and manner of payment of commissions for particular offerings, the terms of which are available to principals or duly licensed brokers. Any square footage dimensions set forth are approximate.

# 2310 N. Lincoln Avenue

Chicago, IL 60614 | Lincoln Park

## For Lease

Retail Property



**BILL COONEY**

312.275.3127  
bill@baumrealty.com

**TREVOR JACK**

312.275.3128  
trevor@baumrealty.com



© 2018 All information supplied is from sources deemed reliable and is furnished subject to errors, omissions, modifications, removal of the listing from sale or lease, and to any listing conditions, including the rates and manner of payment of commissions for particular offerings, the terms of which are available to principals or duly licensed brokers. Any square footage dimensions set forth are approximate.

