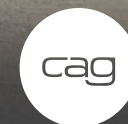


# WEST HOLLYWOOD/BEVERLY GROVE CREATIVE OFFICE SPACE FOR LEASE

**PRICE  
REDUCED**

366 N LA CIENEGA BLVD  
LOS ANGELES, CA 90048



COMMERCIAL  
ASSET GROUP

These materials are based on information and content provided by others, which we believe are accurate. No guarantee, warranty or representation is made by Commercial Asset Group, Inc. or its personnel. All interested parties must independently verify accuracy and completeness. As well, any projections, assumptions, opinion, or estimates are used for example only and do not represent the current or future performance of the identified property. Your tax, financial, legal and toxic substance advisors should conduct a careful investigation of the property and its suitability for your needs, including land use limitations. The property is subject to prior lease, sale, change in price, or withdrawal from the market without notice.

## SIZE

±2,000 RSF

## RENTAL RATE

\$2.50 PSF, MG

## PARKING

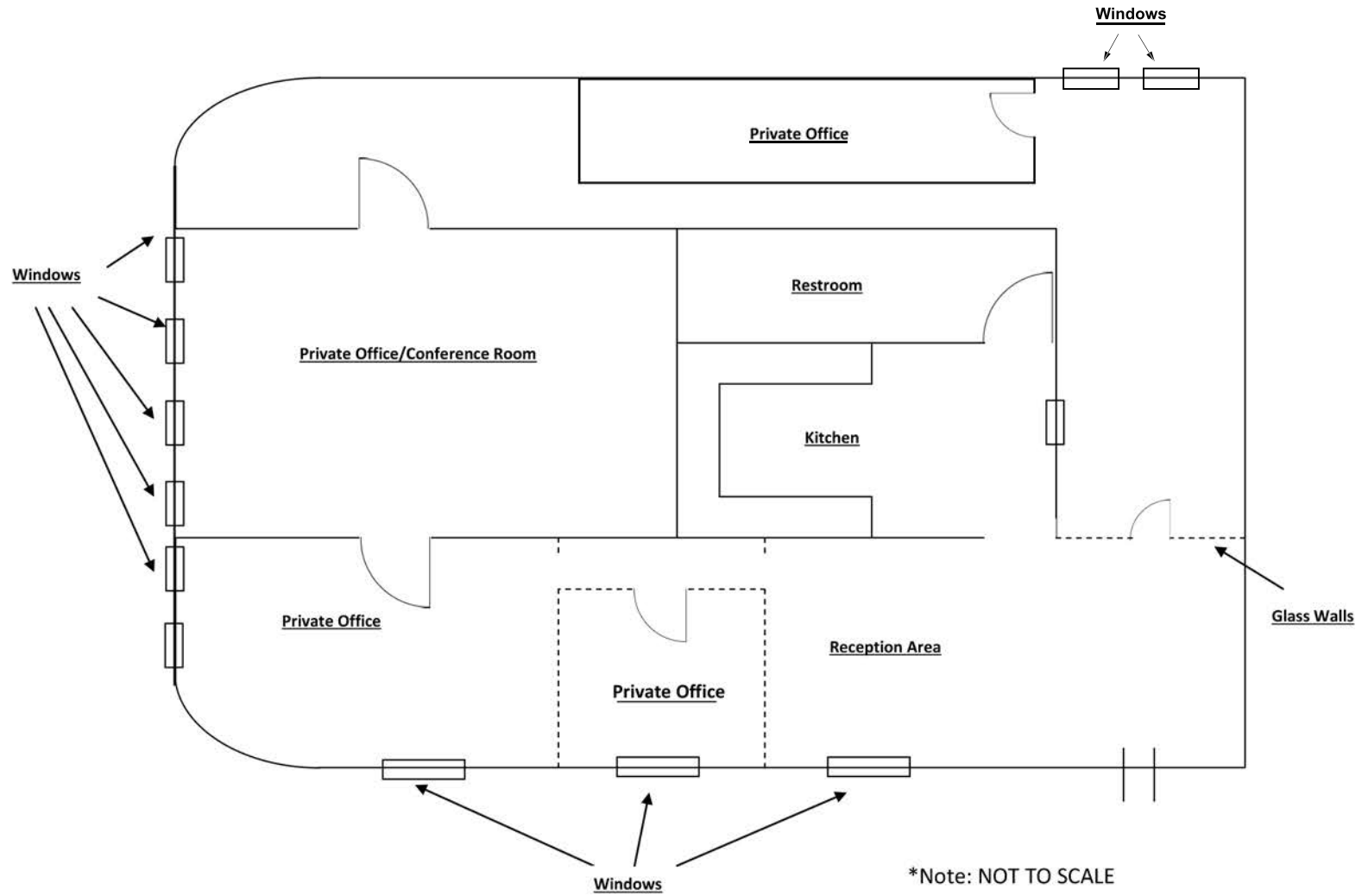
2 SPACES AVAILABLE

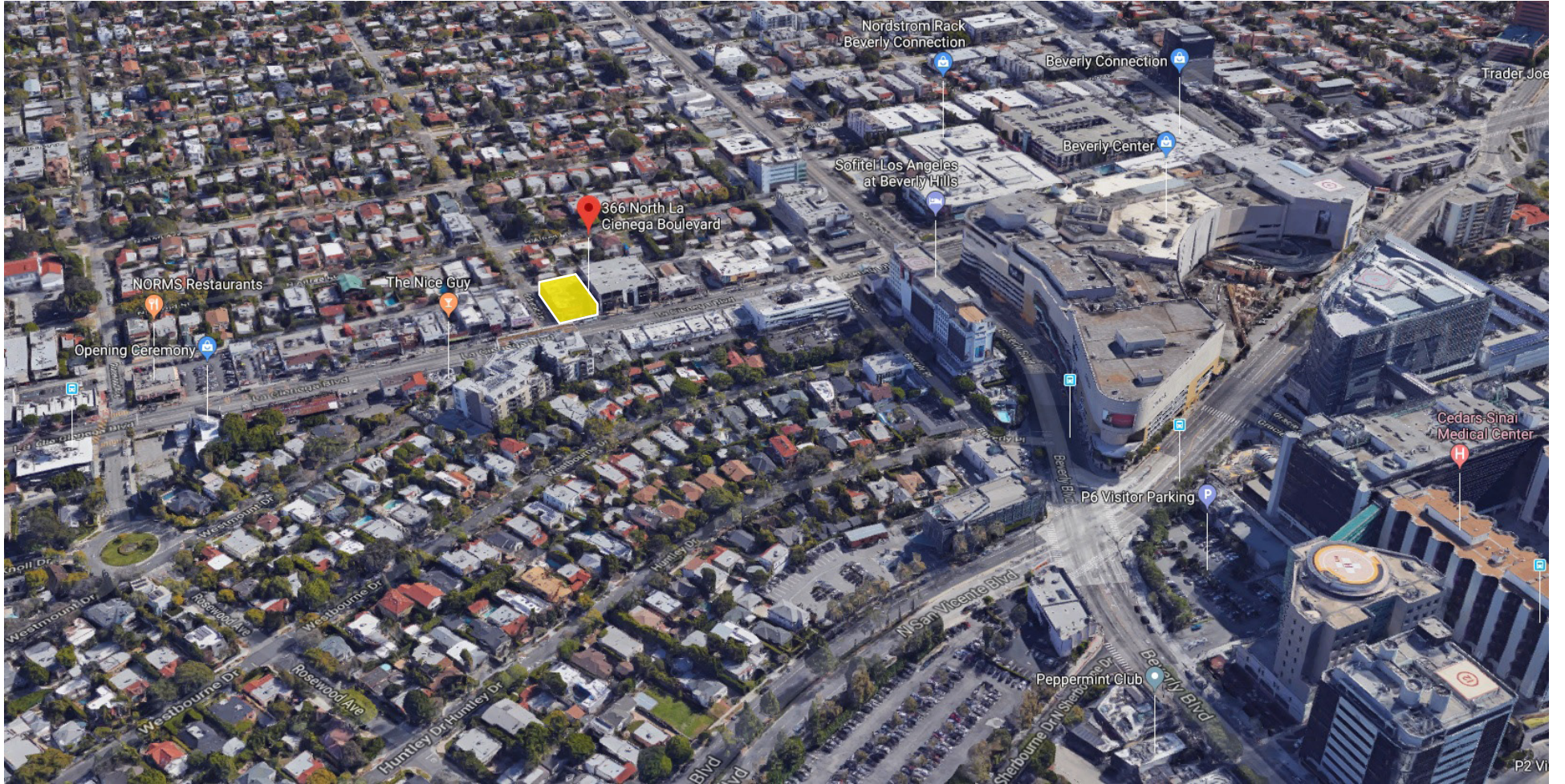
## TIMING

IMMEDIATELY

- NICELY BUILT OUT CREATIVE OFFICE SPACE CONSISTING OF NUMEROUS GLASS ENCLOSED OFFICES, OPEN WORK SPACE, PRIVATE RESTROOM, AND LARGE REMODELED KITCHEN
- HARDWOOD FLOORING THROUGHOUT
- TONS OF NATURAL LIGHT
- LOCATED DOWN THE STREET FROM THE MELROSE DESIGN DISTRICT AND THE BEVERLY CENTER
- 2ND FLOOR OFFICE LOCATED ABOVE THE LARGO THEATRE AND THE ROGER ROOM
- SITUATED ABOVE A LARGE OPEN COURTYARD

# FLOOR PLAN

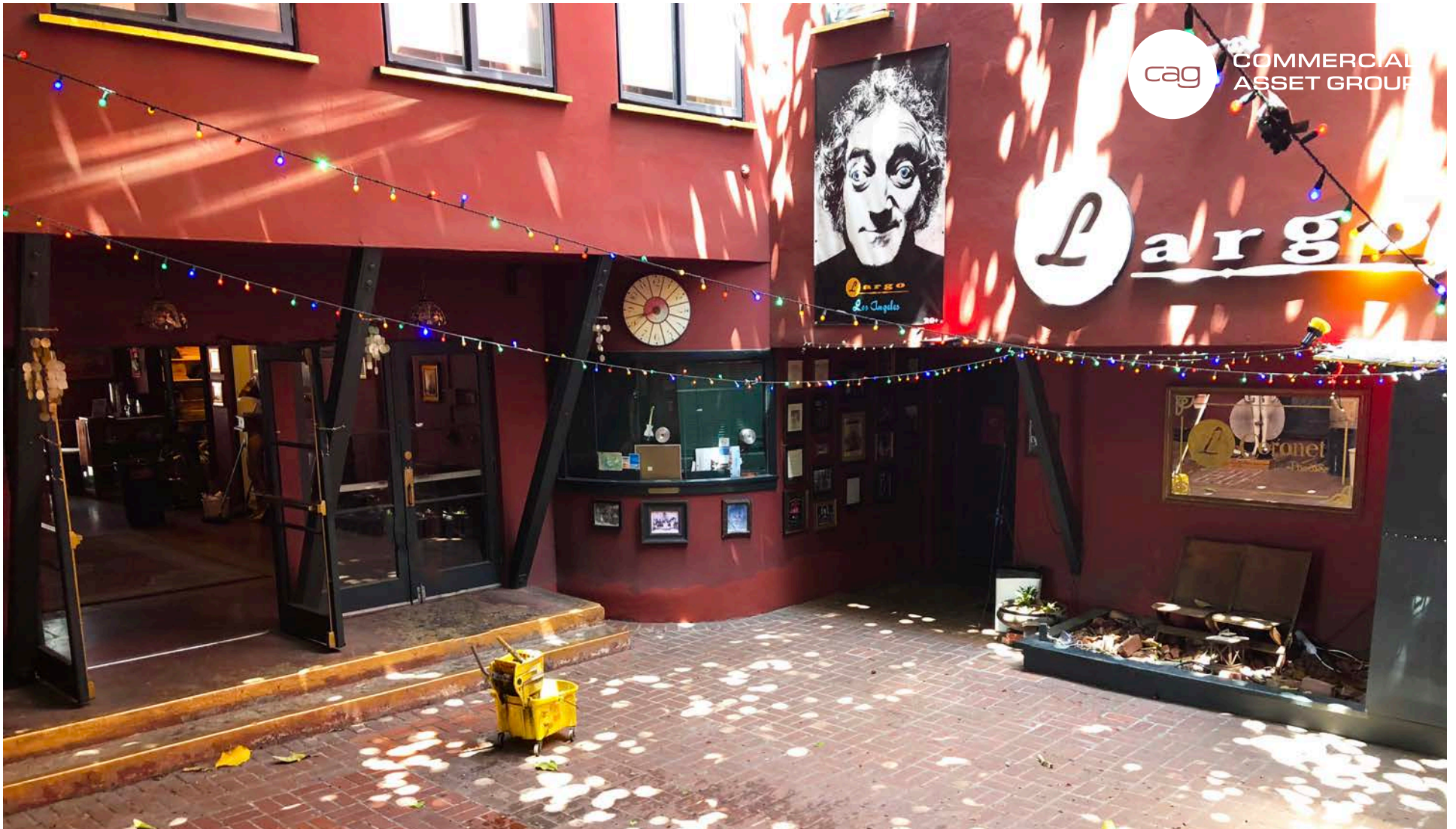




AERIAL



SPACE PHOTOS



Largo



**DAVID ASCHKENASY**  
EXECUTIVE VICE PRESIDENT  
P 310.272.7381  
E DAVIDA@CAG-RE.COM  
LIC. 01714442

**SEAN STOCKBAUER**  
ASSOCIATE  
P 310.272.7389  
E SEAN@CAG-RE.COM  
LIC. 02080476

**COMMERCIAL ASSET GROUP**  
1801 CENTURY PARK EAST, STE 1550  
LOS ANGELES, CA 90067  
P 310.275.8222 F 310.275.8223  
WWW.CAG-RE.COM LIC. 01876070

