

# 951 MARINERS ISLAND BLVD

Suite 200 | San Mateo, California

CLASS A OFFICE FOR SUBLEASE

±2,651 SQUARE FEET AVAILABLE

For more information, please contact:

**Miki Correa Vierra**  
Director

P +1 408 572 4164  
miki.correa@cushwake.com  
LIC #01718959

**Chris Blom**  
Senior Associate

P +1 650 931 2210  
chris.blom@cushwake.com  
LIC #02031205

[View Site Specific COVID-19 Prevention Plan](#)

# 951 MARINERS ISLAND BLVD

San Mateo, California

## Availability

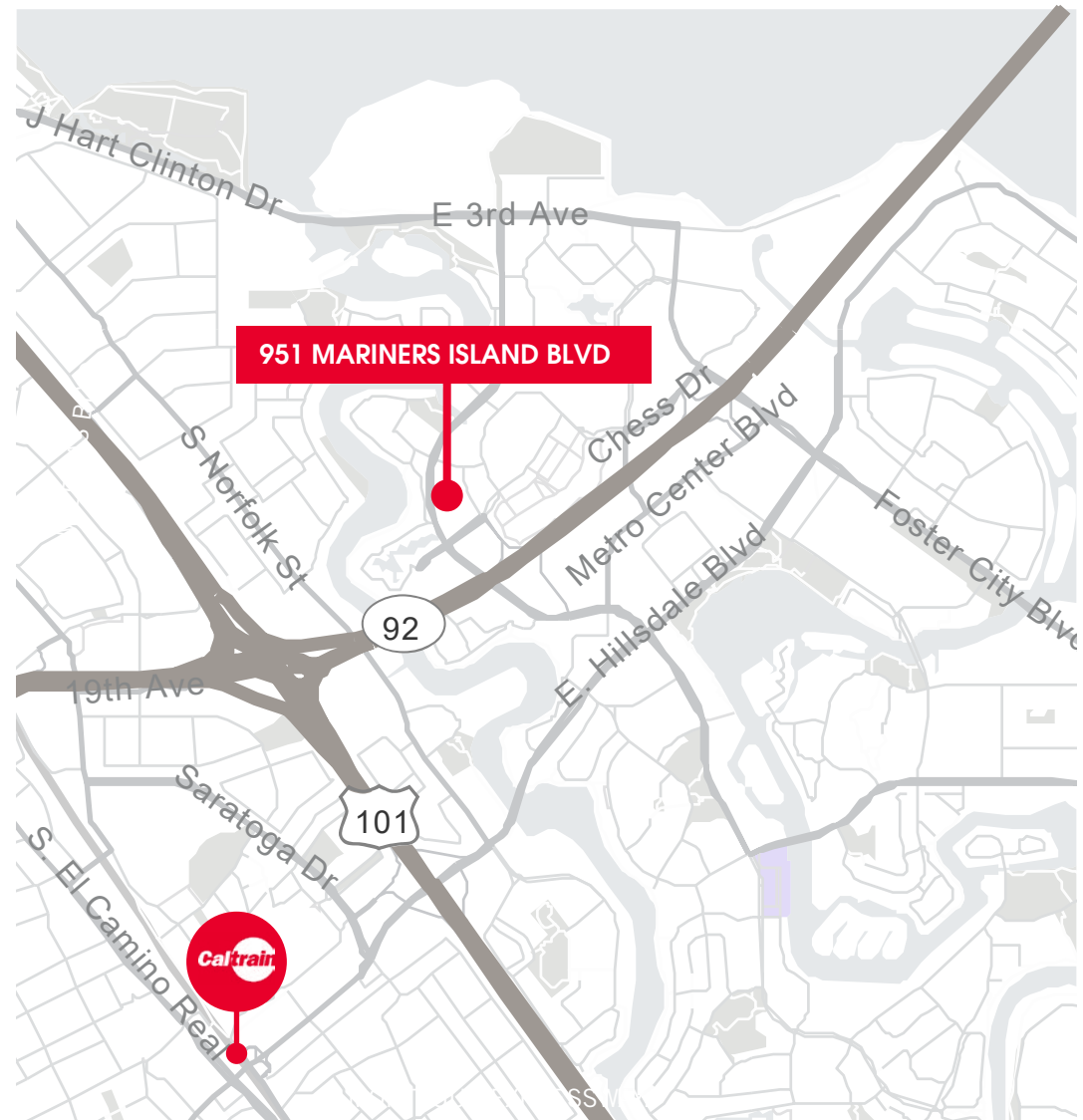
- ±2,651 SF available on the second floor
- LED: 1/31/2021
- \$2.95/SF FS

## Project Highlights

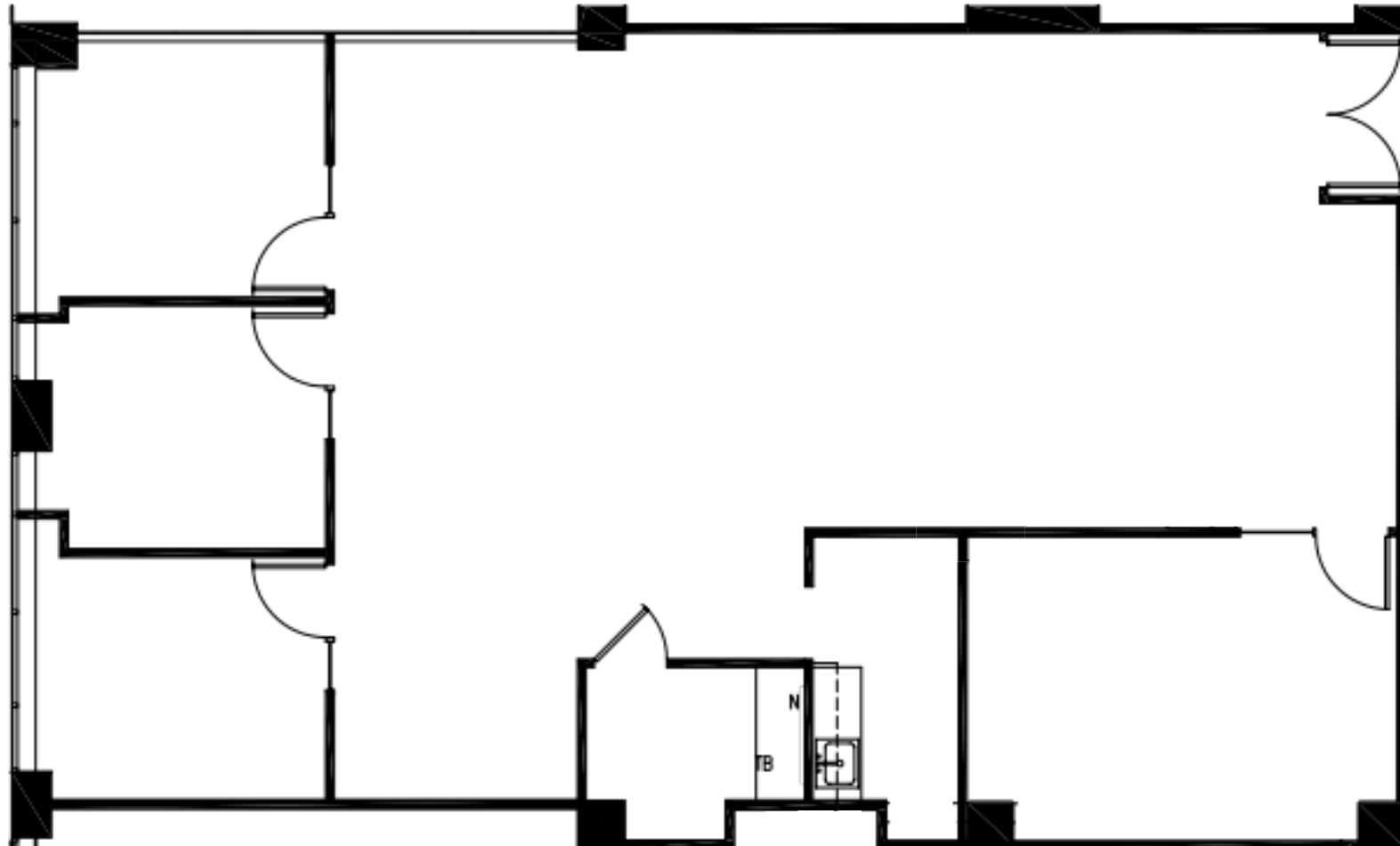
- Renovated fitness center with showers & lockers
- On-site iJava Cafe
- Weekly food truck service
- Indoor/outdoor tenant lounge area
- Commute shuttle service to Caltrain
- Electric vehicle charging stations
- On-site property management

## Location Highlights

- Immediate access to Highways 92, 101 & I-280
- Walking distance to Bridgepointe Shopping Center
- Access to the Bay Trail for running, walking or biking



## Floor Plan



## Photos

