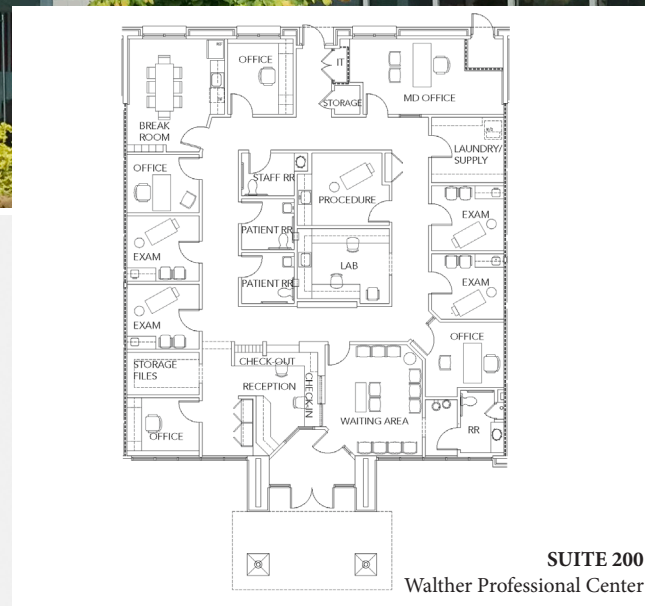


# WALTHER PROFESSIONAL CENTER

766 Walther Road  
Lawrenceville, GA 30046



## HIGHLIGHTS

- 19,000 +/- SF of Medical Office Building
- 3,051 SF Fully Built-Out Ground Floor Suite Available
- Exterior Entrance
- No Use Restrictions
- Ample Free Parking
- Usable Floor Plates
- Move-In Ready Condition
- Close Proximity to Northside Gwinnett
- Excellent Access to GA-316 & Duluth Hwy (120)
- Near Restaurants, Banks & Shopping

## FOR MORE INFORMATION, CONTACT:

### STEVE HALL

Senior Managing Director, Transwestern

 404.842.6560

 [steve.hall@transwestern.com](mailto:steve.hall@transwestern.com)

### JOHN V. LOPEZ

Senior Vice President, Transwestern

 404.842.6562

 [john.lopez@transwestern.com](mailto:john.lopez@transwestern.com)

## HEALTHCARE ADVISORY SERVICES



3340 Peachtree Road NE  
Suite 1000  
Atlanta, GA 30326

P: 404.842.6600  
F: 404.842.6601  
[www.transwestern.com](http://www.transwestern.com)

