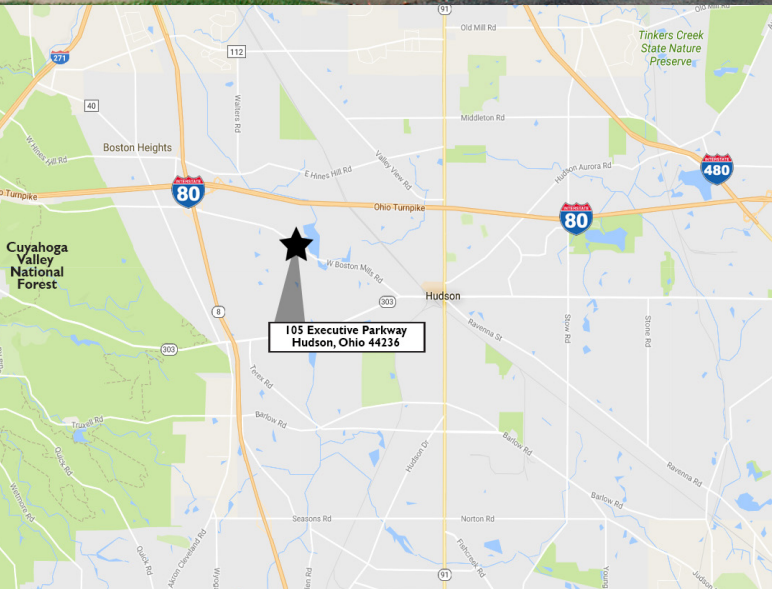


FOR LEASE

105 Executive Parkway

HUDSON, OHIO 44236



Property Highlights

- 4,317 SF Available
- Above standard finishes throughout
- Four single story buildings with unique architecture
- Aggressive/creative Landlord
- Private entrances and separate utilities for each suite
- Easy access to Route 8 and Ohio Turnpike
- Pro-business community
- Convenient location in a professional setting
- Minutes to freeways, restaurants, and shopping
- Attentive property management
- Generous glass lines

One unit left. Corner suite
with abundant windows.

MATTHEW E. BEESLEY

Principal

216.525.1466

mbeesley@crescorealestate.com



**CUSHMAN &
WAKEFIELD**



3 Summit Park Drive, Suite 200
Cleveland, Ohio 44131
P 216.520.1200 • F 216.520.1828
crescorealestate.com

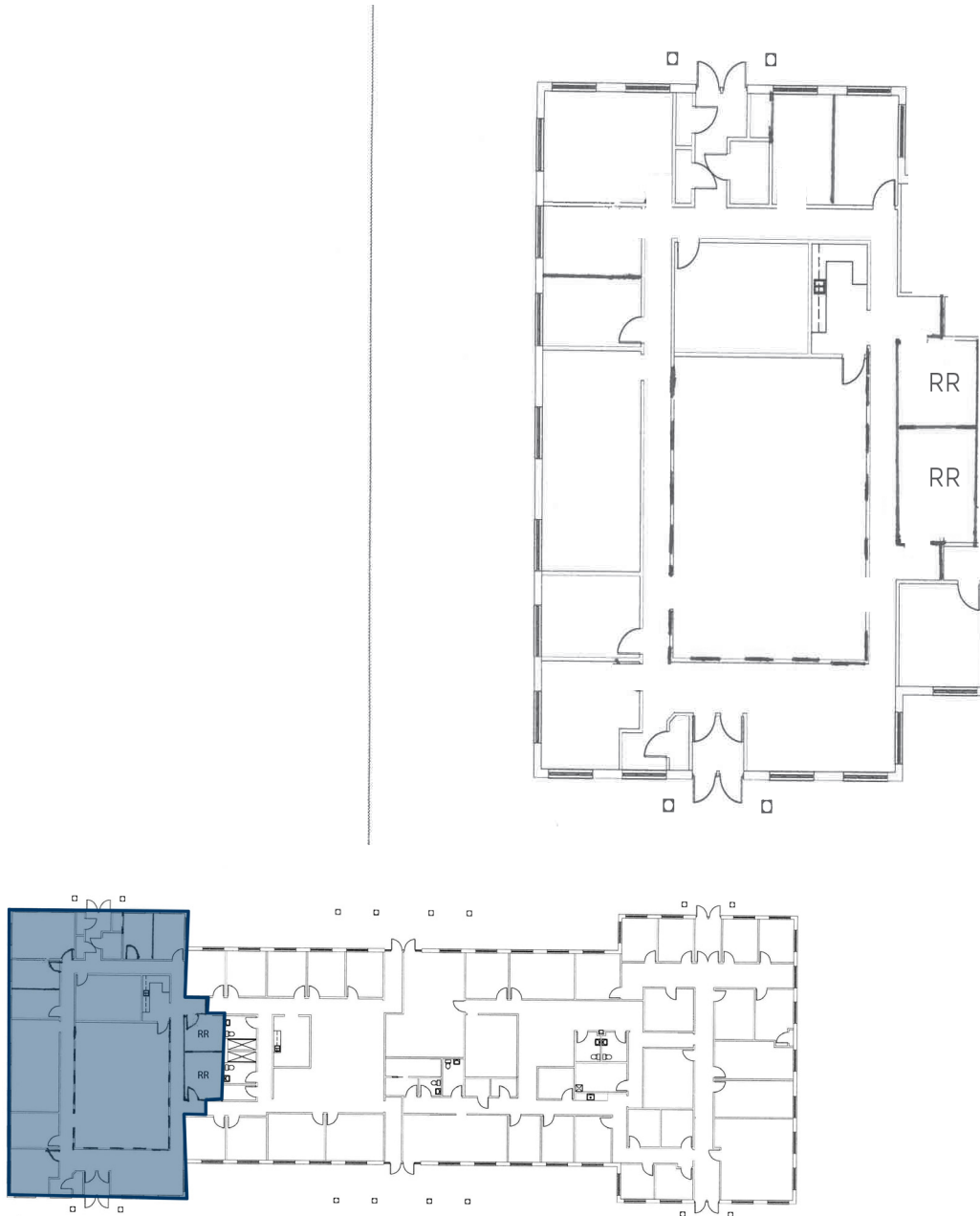
Cushman & Wakefield Copyright 2018. No warranty or representation, express or implied, is made to the accuracy or completeness of the information contained herein, and same is submitted subject to errors, omissions, change of price, rental or other conditions, withdrawal without notice, and to any special listing conditions imposed by the property owner(s). As applicable, we make no representation as to the condition of the property (or properties) in question.

FOR LEASE

150 Executive Parkway

HUDSON, OHIO 44236

4,317 SF



MATTHEW BEESLEY

Principal

216.525.1466

mbeesley@crescorealestate.com



**CUSHMAN &
WAKEFIELD**



3 Summit Park Drive, Suite 200
Cleveland, Ohio 44131
P 216.520.1200 • F 216.520.1828
crescorealestate.com

Cushman & Wakefield Copyright 2018. No warranty or representation, express or implied, is made to the accuracy or completeness of the information contained herein, and same is submitted subject to errors, omissions, change of price, rental or other conditions, withdrawal without notice, and to any special listing conditions imposed by the property owner(s). As applicable, we make no representation as to the condition of the property (or properties) in question.

3/29/2018

Profile 1 of 1

Summary (35257)



WESTPARK HUDSON

105 Executive Pkwy.
Hudson, OH 44236

County:	Summit
Market:	SE-Z2
Sub Market:	Summit County North/Portage County
Land Size (Acres)	9 Acres
Available SF:	4,317 SF
Building SF:	61,760 SF
Office SF:	4,317 SF

General Listing/Transaction Information1

Asking Rate:	\$13.50 MG Per Year
Min Avail SF:	4,317 SF
Max Contig SF:	4,317 SF
Transaction Type:	Lease

Parking

# Spaces:	300
------------------	-----

Contacts

Listing Broker(s)	Matthew Beesley CRESCO Real Estate 216.525.1466 mbeesley@crescorealestate.com
--------------------------	--

Building/Space

Construction Status:	Existing
Primary Use:	Office
Building Class:	B+
Year Built:	2000
Year Refurbished	2005
# Buildings:	4
ConstructionType:	Brick
Exterior Type:	Brick
# Floors:	1
Multi-Tenant:	Multi-Tenant
Roof Type:	Shingle
Sprinkler:	Yes
Gas:	Dominion
Water:	City
Sewer:	City

Comments

Listing Comments: Four single story buildings with unique architecture. Private entrances and separate utilities for each suite. Easy access to Route 8 and the Ohio Turnpike. Convenient location in a professional setting. Attentive property management. New high efficiency T-8 lighting. Generous glass lines.