

4544I Ruritan Circle
Sterling, VA 20164

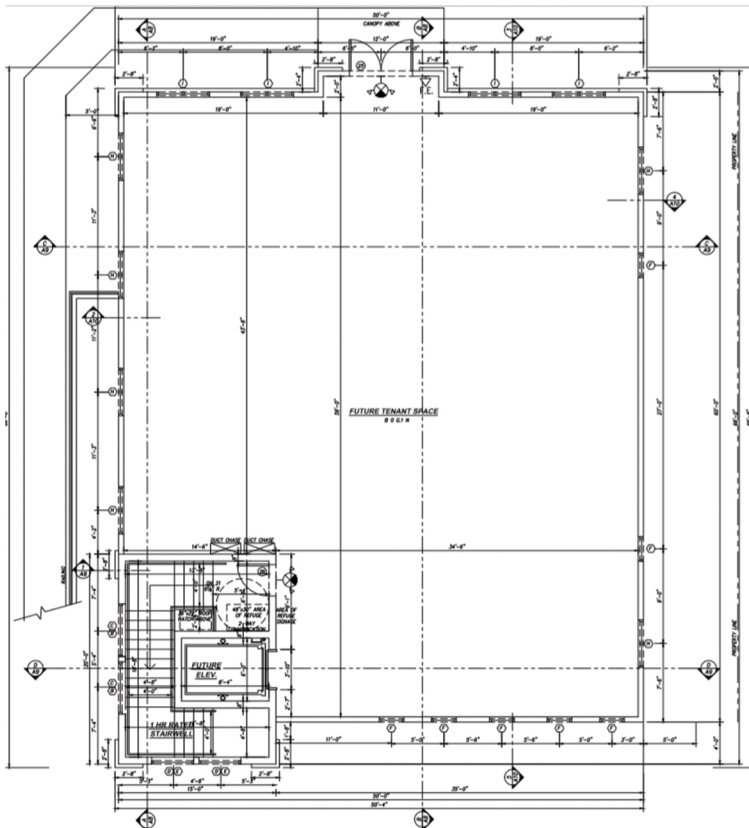


Parcel ID #
032454037000



2ND FLOOR OFFICE/RETAIL SPACE
- For Lease -
approx. 3,000 SF - \$TBD

Second floor office/retail space approx. 3,000 SF for lease. New building fronting Church St. Retail Signage. Efficient floor plate providing significant window line. Well located new growth area of Sterling. Ready third quarter of 2018



Patty J. Brown, CCM
President & Principal Broker

PIBROWN@MARATHONRGI.COM

OFFICE: 703-726-0149
MOBILE: 703-402-2433

4408I PIPELINE PLAZA, SUITE 325
ASHBURN, VIRGINIA 20147

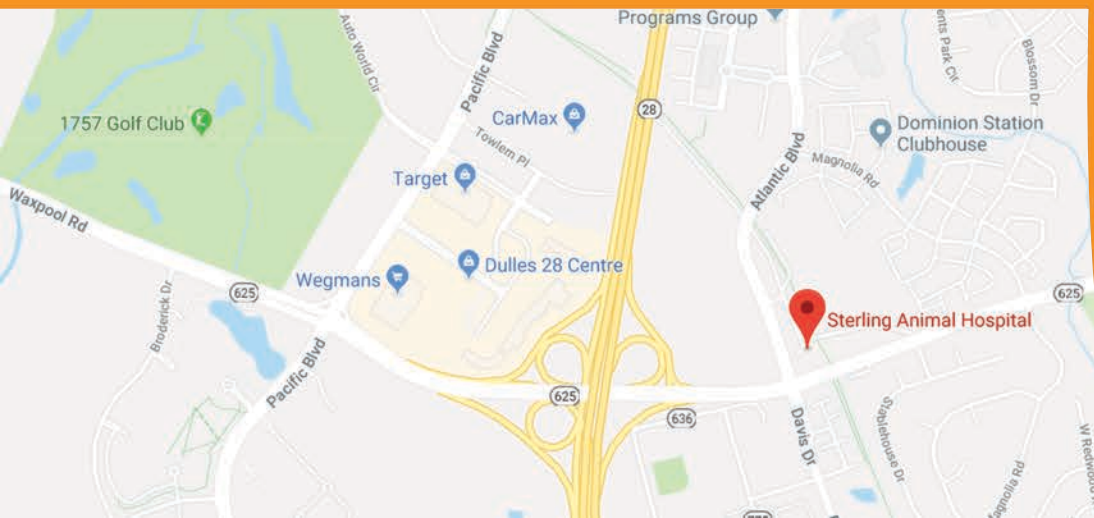
WWW.MARATHONRGI.COM

45441 Ruritan Circle
Sterling, VA 20164



Parcel ID #
032454037000

SITE PLAN



Patty J. Brown, CCM
President & Principal Broker

PIBROWN@MARATHONRGI.COM

OFFICE: 703-430-8962
MOBILE: 703-402-2433

44081 PIPELINE PLAZA, SUITE 325
ASHBURN, VIRGINIA 20147

WWW.MARATHONRGI.COM