

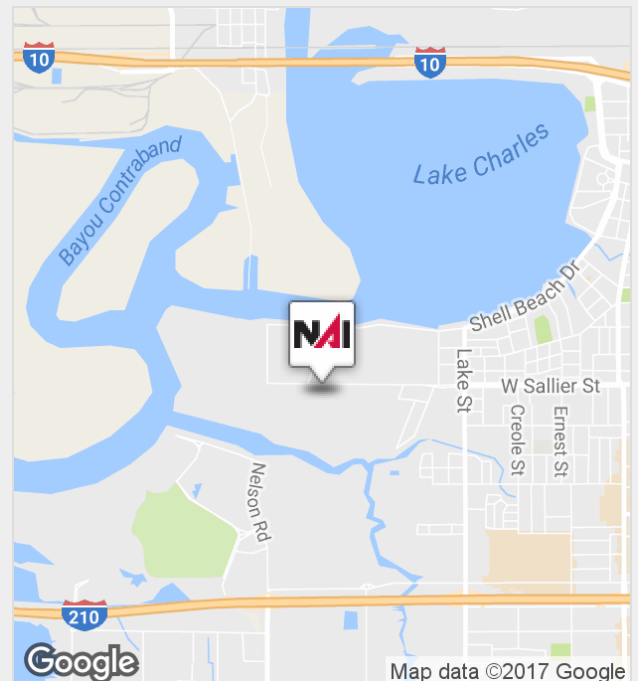


1450 William Street

Lake Charles, Louisiana 70601

Property Features

- Commercial Space available in Walnut Grove -- Southwest Louisiana's premier Traditional Neighborhood Development (TND)
- Walnut Grove is located off of West Sallier Street, just minutes from Downtown Lake Charles
- ±1,777 SF available on the 1st floor of The Lawton Building
- Space is adjacent to Walnut Grove's event space, The Majestic Hall
- Other tenants in building are Morgan Stanley (3rd floor) and Jack Lawton Companies (2nd floor)
- Lease rates negotiable and to be determined per tenant specifications, build-out, etc.



For more information:

Matt Redd, CCIM, SIOR, CRE

337 489 9666 • mattredd@latterblum.com

For Lease - 1450 William Street, Floor 1

Commercial Space



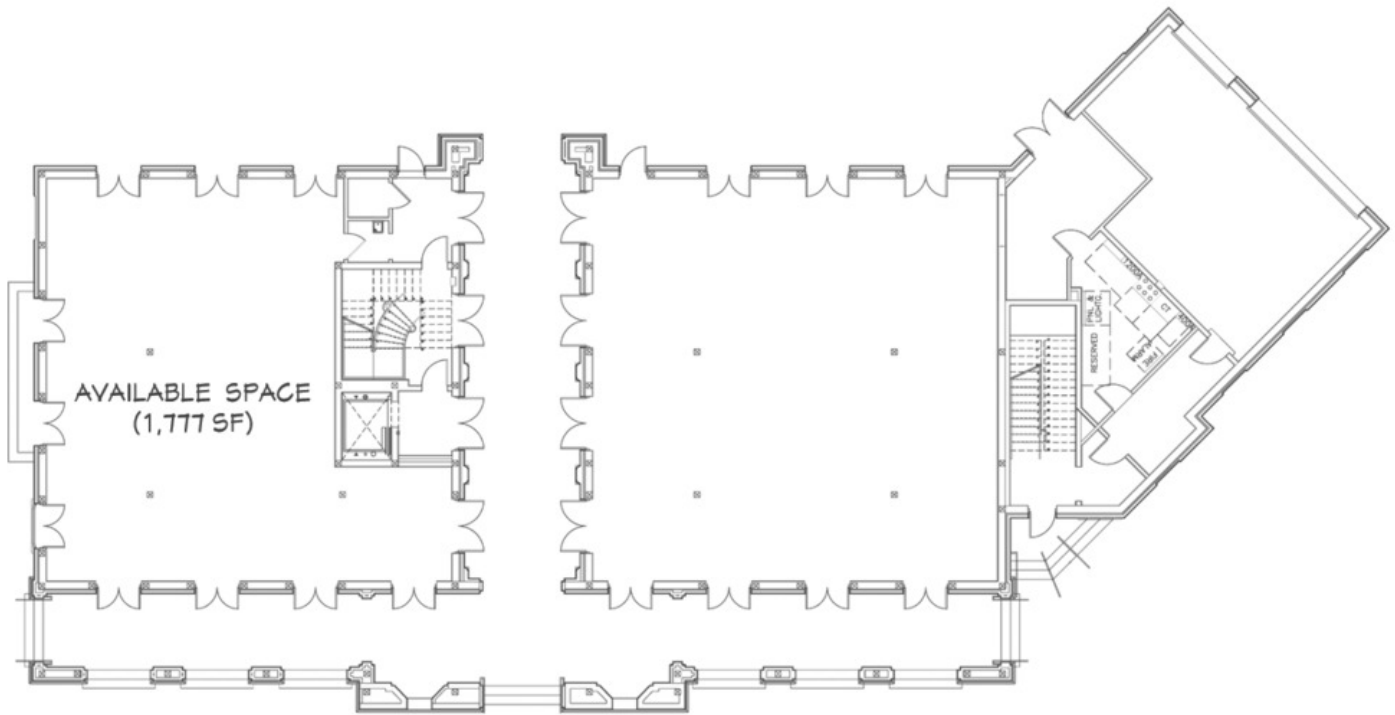
For Lease - 1450 William Street

Commercial Space



For Lease - 1450 William Street

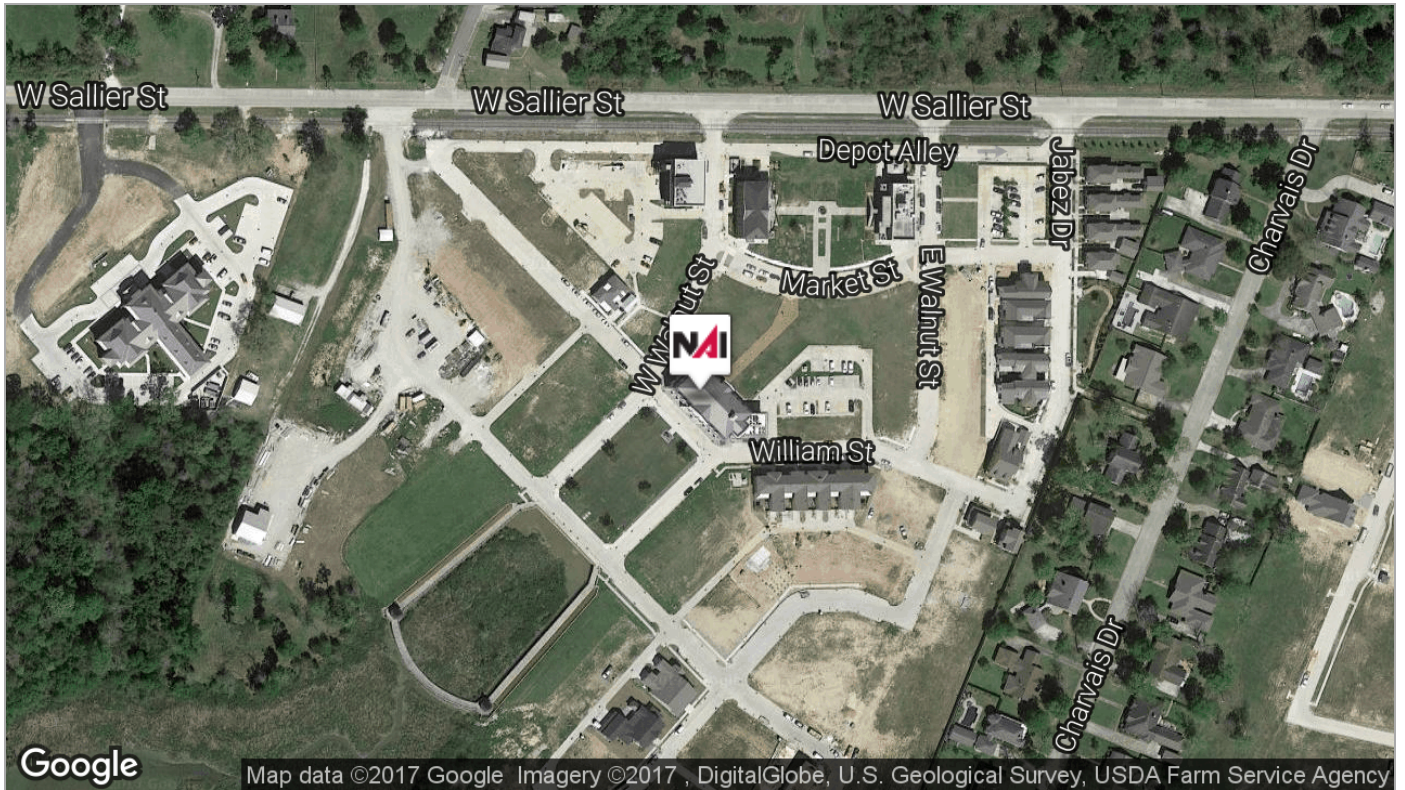
Commercial Space



1 1450 WILLIAM STREET
Lawton Building - First Floor

For Lease - 1450 William Street, Floor 1

Commercial Space



For Lease - 1450 William Street, Floor 1

Commercial Space

