

LAND FOR SALE

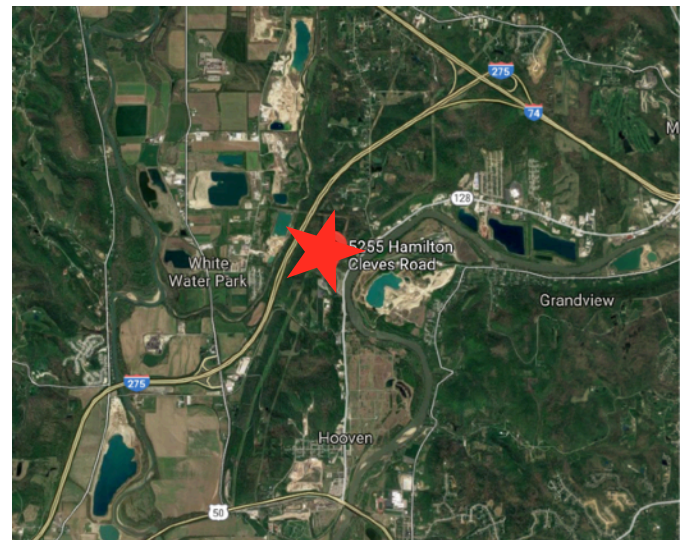
5255 Hamilton-Cleves Road

Whitewater Twp, OH 45002



Property Highlights

- Rivers Edge Commerce Park
- 2 pad-ready, developed lots with .8 and 1.8 acre parcels
- 1-28 additional acres available with customizable divisible lots
- Zoned for commercial and industrial uses
- All utilities available
- Quick access to highways
- Ideal for contractors, multiple bay buildings, etc
- Level topography
- Pricing: Lot 1 (.8 acres) \$ 90,000
 Lot 2 (1.8 acres) \$125,000
~~Lot 3 (2.6 acres) \$175,000~~ **SOLD!**



North Ridge Realty Group

5430 West Chester Road | West Chester, OH 45069

Susan Stretch | c: 513.315.8522 | o: 513.860.5050 | susan@nrrg.com

John Stretch | c: 513.623.6505 | o: 513.860.5050 | john@nrrg.com

