

EXTERIOR UPGRADE COMPLETE!

OYSTER POINT

667 RSF - 24,307 RSF OFFICE FOR LEASE

NEW PRICING: FLOOR 1: \$3.40/RSF FS | FLOORS 2-3: \$3.45/RSF FS | FLOORS 4-5: \$3.50/RSF FS

INCENTIVE PRICING FOR SMALL SUITES: Landlord offers a rental rate of **\$2.50/RSF**, full service, for the first six months for suites up to 1,500 RSF. Minimum term is three months. Suites shall be lease on an “as-is” basis. Offer expires on February 28, 2021.



NEW PRICING

INCENTIVE PRICING FOR SMALL SUITES

Landlord offers a rental rate of \$2.50/RSF, full service, for the first six months for suites up to 1,500 RSF. Minimum term is three months. Suites shall be lease on an “as-is” basis. Offer expires on February 28, 2021.

FLOORS 4-5: \$3.50 FS



FLOORS 2-3: \$3.45 FS

FLOOR 1: \$3.40 FS

ABOUT

OYSTER POINT MARINA PLAZA

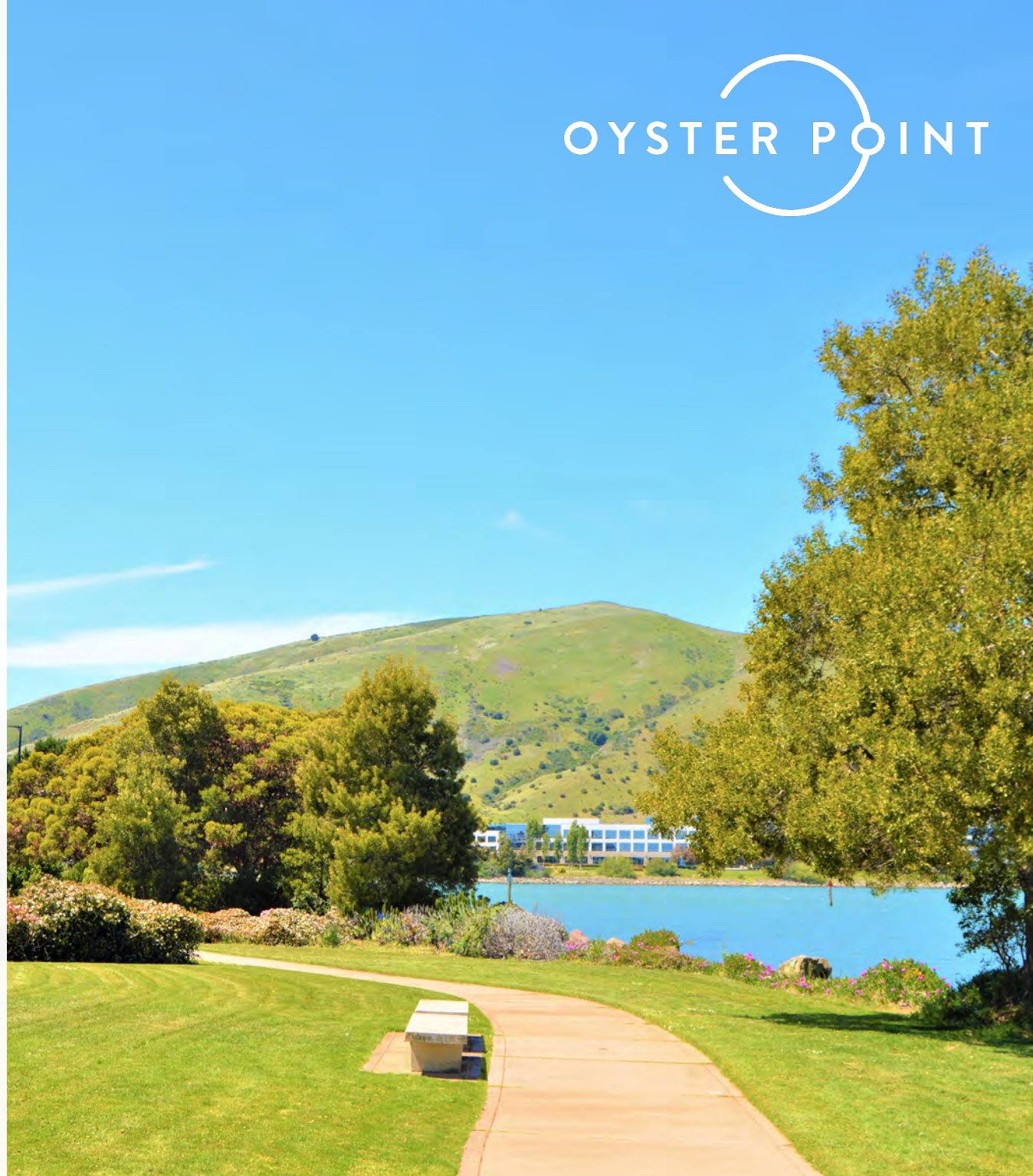
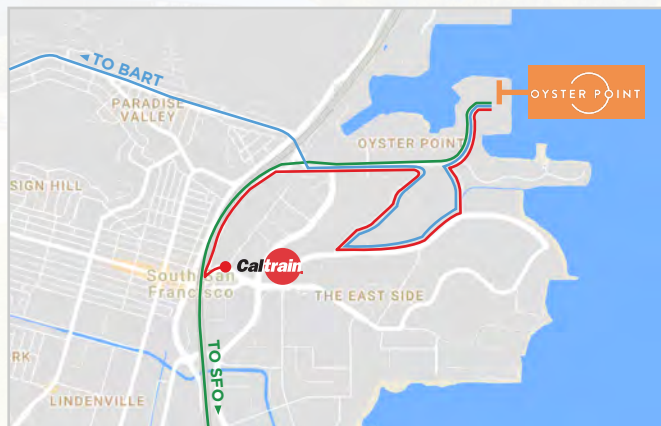
Oyster Point Marina Plaza (OPMP) is situated on the San Francisco Bay and enjoys spectacular water views. OPMP includes two, five-story office buildings of the highest quality. OPMP has attained LEED Platinum status, the highest environmentally friendly designation in the industry. OPMP has convenient shuttle transportation to BART, SamTrans, SF Ferry and Caltrans every half hour.

OPMP is conveniently located on Oyster Point Boulevard with immediate access to Highway 101 and the major transportation arterials of Highways 280 and 380. Locally tenants will find a plethora of restaurants and premier hotels, many within walking distance.

SUSTAINABILITY



In 2016, Oyster Point Marina Plaza earned and was awarded the 5-year certification of LEED (Leadership in Energy and Environmental Design) PLATINUM-EB (Existing Buildings) by the U.S.G.B.C. (United States Green Building Council). As part of our efforts to attain this prestigious recognition, we ask that our Tenants participate in energy conservation, recycling, and alternate forms of transportation, which can have a significant impact on the total energy usage each year as well as the opportunity to reduce our carbon footprint.



400 OYSTER POINT
667 - 2,483 SF AVAILABLE

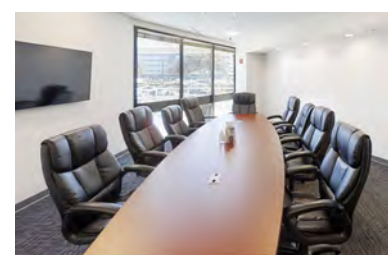
395 OYSTER POINT
749-24,307 SF AVAILABLE

NEW TRAINING ROOM



[PREVIEW HERE](#)

NEW CONFERENCE ROOM



[PREVIEW HERE](#)

OYSTER POINT



MARKET READY SUITES



**WHAT'S NEW
AT OYSTER
POINT?**

NEW COMMON LOBBIES

**UPGRADED COMMON
CONFERENCE CENTERS**



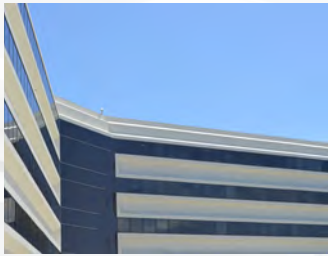
NEW OUTDOOR AREA & UPGRADED EXTERIOR



UPDATED FITNESS CENTER



PROJECT HIGHLIGHTS



667- 24,307 RSF OFFICE SPACE FOR LEASE

- Full Exterior Building Upgrade Complete (2020)
- New & Upgraded HVAC/Mechanical System (2019)
- Spectacular San Francisco Bay Views
- Water Views from Most Suites
- New Market Ready Building Standard Finishes
- Market Ready Suites Complete
- Renovated Two-Story Atrium Lobby Areas
- New Outdoor Amenity Area Complete
- Renovated Fitness Center w/ Showers & Locker Room
- Direct Access to Miles of Bayfront Trails
- Convenient Access to BART, CalTrain, SamTrans and SF Ferry
- Walking Distance to New Water Shuttle Terminal to Jack London Square
- 3.4/1000 Parking on ±22 Acre Site
- 3 Upgraded Common Conference Rooms Available
- Training Room for Up to 35+ People
- Seven Day, 24-Hour Lobby Attendants with Card-Key Access After Hours
- On-Site Management and Building Engineers
- On-Site Full Service Restaurant & Deli (Catering Available) - Hana's Café
- New Laundry Locker Automated Dry Cleaning Service

VIRTUAL CONFERENCE ROOM TOURS:



AVAILABILITY

SUITE 129/400 667 RSF AVAILABLE NOW	SUITE 450/400 675 RSF AVAILABLE NOW	SUITE 436/400 749 RSF AVAILABLE NOW	SUITE 226/395 749 RSF AVAILABLE NOW	SUITE 224/395 750 RSF AVAILABLE NOW	SUITE 133/400 890 RSF AVAILABLE NOW
SUITE 212/400 900 RSF AVAILABLE NOW	SUITE 124/400 1,421 RSF AVAILABLE NOW	SUITE 110/400 1,437 RSF AVAILABLE NOW	SUITE 412/400 1,494 RSF AVAILABLE NOW	SUITE 407/400 1,494 RSF AVAILABLE NOW	SUITE 531/400 1,558 RSF AVAILABLE NOW
SUITE 434/400 1,710 RSF AVAILABLE NOW	SUITE 514/395 1,984 RSF AVAILABLE NOW	SUITE 230/395 2,281 RSF AVAILABLE NOW	SUITE 426/400 2,314 RSF AVAILABLE NOW	SUITE 120/400* 2,447 RSF AVAILABLE NOW	SUITE 539/400 2,468 RSF AVAILABLE 12/01/20
SUITE 417/400 2,483 RSF AVAILABLE NOW	SUITE 213/400* 2,613 RSF AVAILABLE NOW	SUITE 321/400 2,741 RSF AVAILABLE NOW	SUITE 120/395* 2,775 RSF AVAILABLE NOW	SUITE 405/395 2,786 RSF AVAILABLE NOW	SUITE 309/395 3,403 RSF AVAILABLE NOW
SUITE 409/395 3,901 RSF AVAILABLE NOW	SUITE 218/395 4,621 RSF AVAILABLE NOW	SUITE 306/395 5,314 RSF AVAILABLE NOW	SUITE 209/395 5,463 RSF AVAILABLE NOW	SUITE 121/395 5,729 RSF AVAILABLE NOW	SUITE 500/395 6,566 RSF AVAILABLE 12/01/20
SUITE 321/395 16,776 RSF AVAILABLE NOW	SUITE 420/395 17,620 RSF AVAILABLE NOW	SUITE 405-409-420/395 24,307 RSF AVAILABLE NOW			

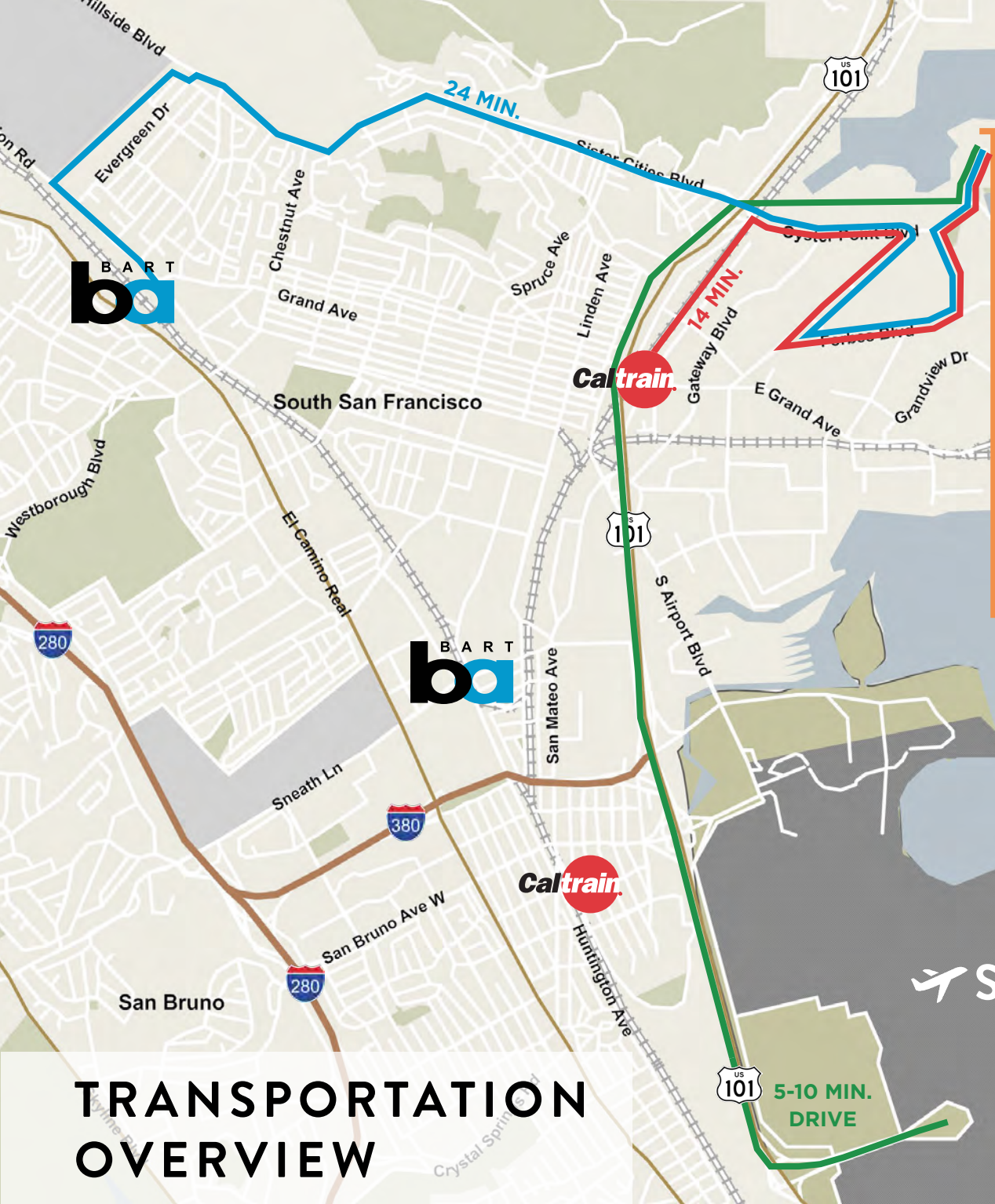
VIRTUAL TOURS (CLICK TO VIEW)

SUITE 133/400	SUITE 124/400	SUITE 110/400	SUITE 308/395
SUITE 120/400	SUITE 213/400	SUITE 120/395	


[CLICK HERE TO VIEW FLOOR PLANS](#)

***MARKET READY**

OYSTER POINT



OYSTER POINT SHUTTLE STOP

14 MINUTES 24 MINUTES

[CLICK HERE FOR SHUTTLE SCHEDULES](#)

TRANSPORTATION OVERVIEW

AMENITIES

RESTAURANTS

- | | |
|-----------------------------|------------------------------|
| 1 Hana's Café & Deli | 12 Taquerias El Farolito |
| 2 Oyster Café | 13 Cecilia's Pizzeria |
| 3 Specialty's | 14 Peet's Coffee |
| 4 Starbucks | 15 WhiteCaps Drinks + Eats |
| 5 Café de Casa | 16 Dunkin Donuts |
| 6 Darby Dan's Sandwiches | 17 HL Peninsula Restaurant |
| 7 Bertolucci's | 18 Foundry & Lux |
| 8 Thai Satay Restaurant/Bar | 19 Amoura Restaurant |
| 9 Los Compadres | 20 Café 382 |
| 10 Di Napoli Ristorante | 21 La Tapatia Mexicatessen |
| 11 Buon Gusto | 22 Armstrong Brewing Company |

HOTELS

- | | |
|-----------------------------|------------------------------|
| 1 Ramada Limited | 8 Embassy Suites |
| 2 Residence Inn by Marriott | 9 Comfort Inn & Suites |
| 3 Courtyard San Francisco | 10 Ramada Inn & Suites |
| 4 Four Points Sheraton | 11 DoubleTree by Hilton |
| 5 Larkspur Landing | 12 Homewood Suites by Hilton |
| 6 Hilton Garden Inn | 13 AC Hotel by Marriott |
| 7 Hampton Inn | |

LIFESTYLE

- | | |
|---------------------------|-----------------------------|
| 1 FedEx Service Center | 7 Bank of America |
| 2 AVIS Rent-A-Car | 8 Gateway Child Development |
| 3 UPS | 9 Full Grip Crossfit |
| 4 Oyster Point Yacht Club | 10 Oyster Point Park |
| 5 Costco Business Center | 11 Costco Wholesale |
| 6 Lowes | |



OYSTER POINT

667 RSF – 24,307 RSF OFFICE SPACE FOR LEASE



SCOTT ENNIS | +1 408 572 4125 | scott.ennis@cushwake.com | LIC #00798264

CLARK STEELE | +1 408 436 3653 | clark.steele@cushwake.com | LIC #01995379

CHRIS BLOM | +1 650 931 2210 | chris.blom@cushwake.com | LIC #02031205



[VIEW SITE SPECIFIC COVID-19 PREVENTION PLAN](#)

Cushman & Wakefield Copyright 2020. No warranty or representation, express or implied, is made to the accuracy or completeness of the information contained herein, and same is submitted subject to errors, omissions, change of price, rental or other conditions, withdrawal without notice, and to any special listing conditions imposed by the property owner(s). As applicable, we make no representation as to the condition of the property (or properties) in question.