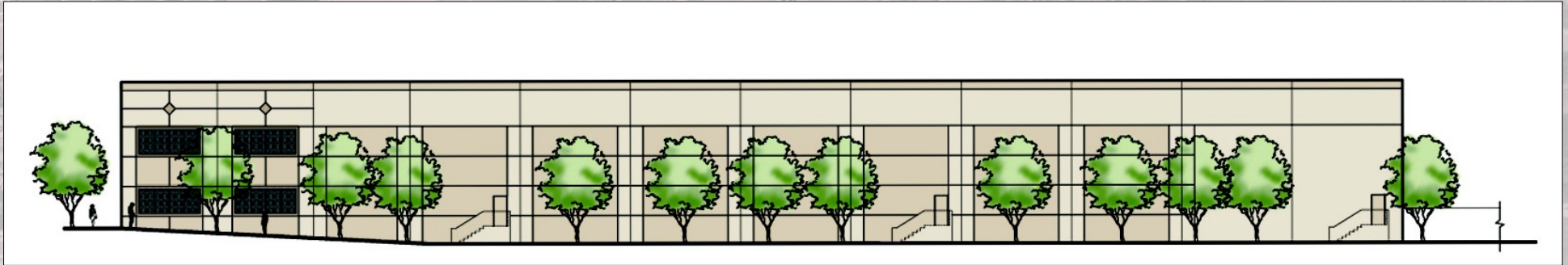


NEW CONSTRUCTION – FOR SALE OR LEASE

VIA DEL RIO BUSINESS PARK

22740 TEMESCAL CANYON RD., CORONA



FEATURES:

- 61,240 sq. ft. (footprint) New Construction Industrial Bldg.
- Up to 6,838 sq. ft. of Office Area (3,419 sq. ft. per floor)
- 27' Clear Height
- Up to 3,000 Amps
- Fenced and Secured Concrete Yard
- Fwy Visibility
- ESFR Sprinklers
- 2% Skylights
- 2:1 Parking Ratio
- 4 Dock High Doors
- 3 Grade Level Doors
- 48' Column Spacing
- 3.51 Acre Parcel

For More Information, Please Contact::

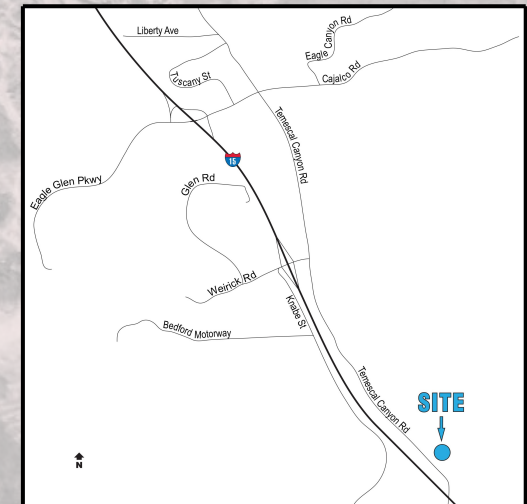


BRYAN CLENDENEN
(951) 894-2432 OFFICE
(909) 732-6666 CELL

BRYAN@GUARDIANASSETMANAGERS.COM

DARRELL CLENDENEN
(951) 894-2431 OFFICE
(951) 271-0736 CELL

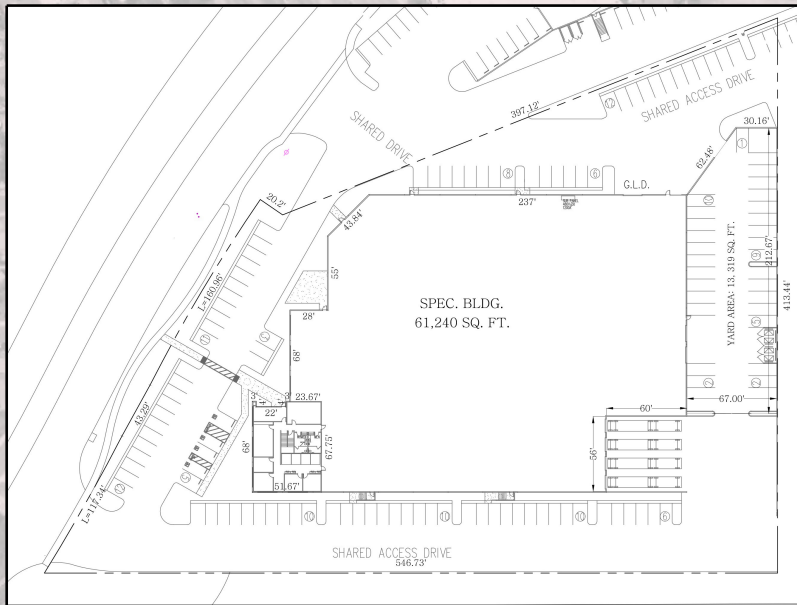
DARRELL@DARRELLCLENDENEN.COM



NEW CONSTRUCTION – FOR SALE OR LEASE

VIA DEL RIO BUSINESS PARK

22740 TEMESCAL CANYON RD., CORONA



For More Information, Please Contact:



BRYAN CLENDENEN
(951) 894-2432 OFFICE
(909) 732-6666 CELL
BRYAN@GUARDIANASSETMANAGERS.COM

DARRELL CLENDENEN
(951) 894-2431 OFFICE
(951) 271-0736 CELL
DARRELL@DARRELLCLENDENEN.COM