

629 WOODLAND SQUARE LOOP SE, LACEY, WA 98503



OFFICE SPACE  
FOR LEASE



629 WOODLAND SQUARE LOOP SE, LACEY, WA 98503



### Property Highlights

- Located in Woodland Square Loop
- Parklike setting, adjacent to Huntamer Park
- Easy access to I-5
- Parking Ratio – 2.77/1000

### Available Space

- Four floors
- Gross Building area 33,427 SF
- Call for rates!

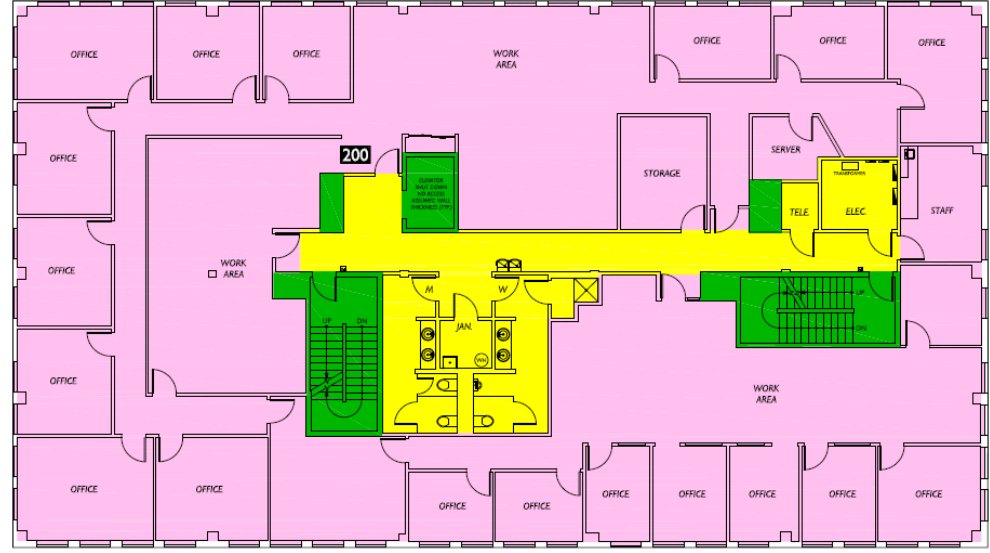


629 WOODLAND SQUARE LOOP SE, LACEY, WA 98503

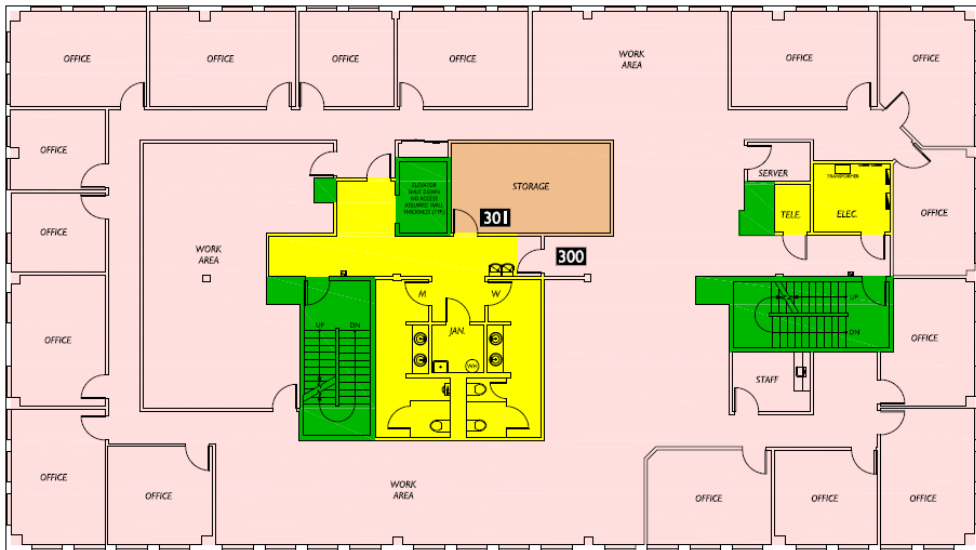
1ST FLOOR



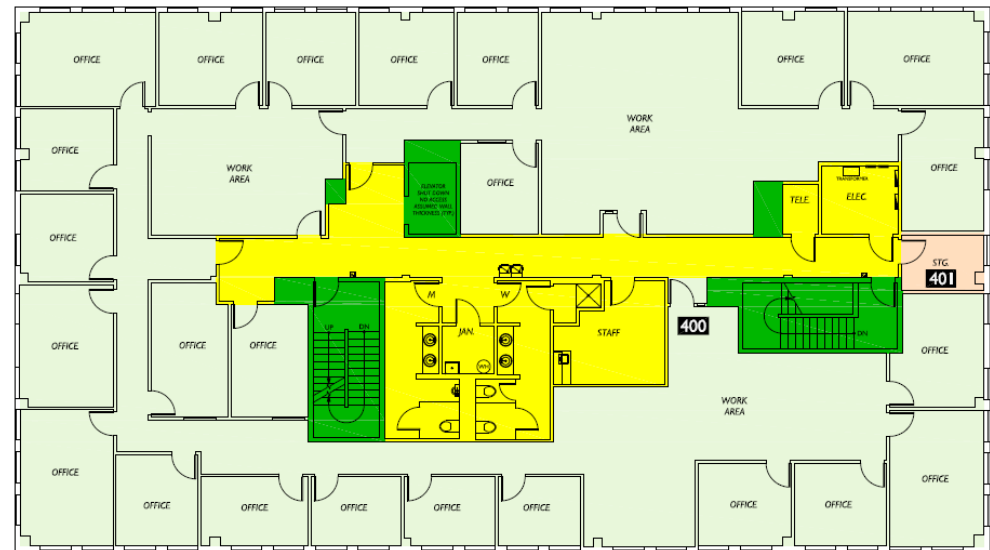
2ND FLOOR



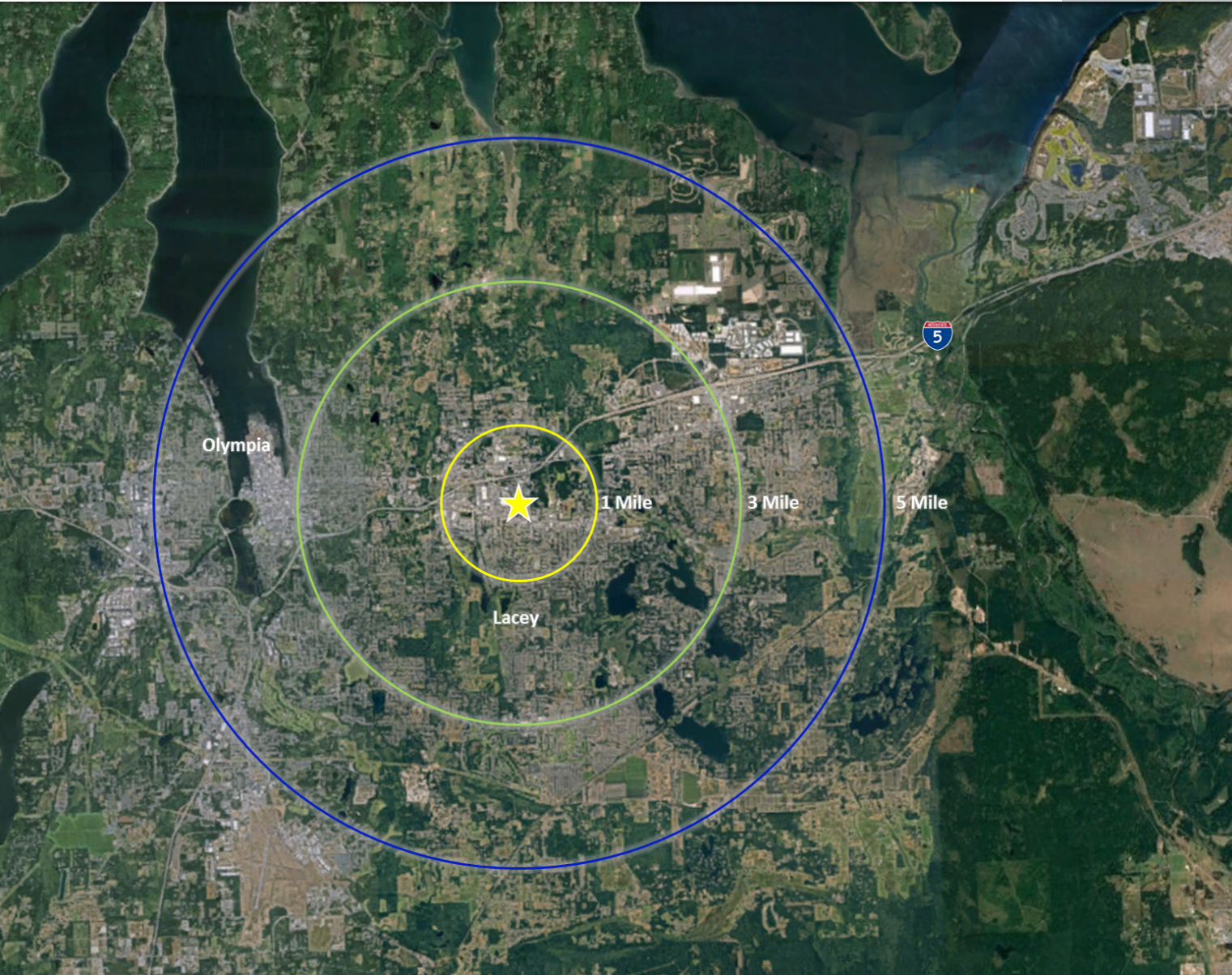
3RD FLOOR



4TH FLOOR



629 WOODLAND SQUARE LOOP SE, LACEY, WA 98503



**Demographics**

**Population**

1 Mile	8,827
3 Mile	67,216
5 Mile	146,632

**Average Household Income**

1 Mile	\$51,126
3 Mile	\$68,643
5 Mile	\$71,651

**Daytime Employee Population**

1 Mile	13,563
3 Mile	34,231
5 Mile	84,170

