

# CHANDLER AIRPORT COMMERCE PARK



DELIVERY JANUARY 2020



PREMIER 67 ACRE INDUSTRIAL PARK | SEC McQUEEN RD. & QUEEN CREEK RD., CHANDLER, ARIZONA

FOR MORE INFORMATION  
PLEASE CONTACT:

**KEN McQUEEN**  
PRINCIPAL  
602.474.9564  
kmcqueen@leearizona.com

**CHRIS McCLURG, SIOR**  
PRINCIPAL  
602.954.3766  
cmclurg@leearizona.com

**GRANT KINGDON**  
ASSOCIATE  
602.474.9504  
gkingdon@leearizona.com

A JOINT VENTURE BY:  
**RYAN**

**Allstate**  
Investments

EXCLUSIVELY LISTED BY:  
**LEE & ASSOCIATES**  
COMMERCIAL REAL ESTATE SERVICES



# CHANDLER AIRPORT COMMERCE PARK



PREMIER 67 ACRE INDUSTRIAL PARK | SEC McQUEEN RD. & QUEEN CREEK RD., CHANDLER, ARIZONA

FOR MORE INFORMATION  
PLEASE CONTACT:

**KEN McQUEEN**  
PRINCIPAL  
602.474.9564  
kmcqueen@leearizona.com

**CHRIS McCLURG, SIOR**  
PRINCIPAL  
602.954.3766  
cmclurg@leearizona.com

**GRANT KINGDON**  
ASSOCIATE  
602.474.9504  
gkingdon@leearizona.com

A JOINT VENTURE BY:  
**RYAN**

**Allstate**  
Investments

EXCLUSIVELY LISTED BY:  
**LEE & ASSOCIATES**  
COMMERCIAL REAL ESTATE SERVICES

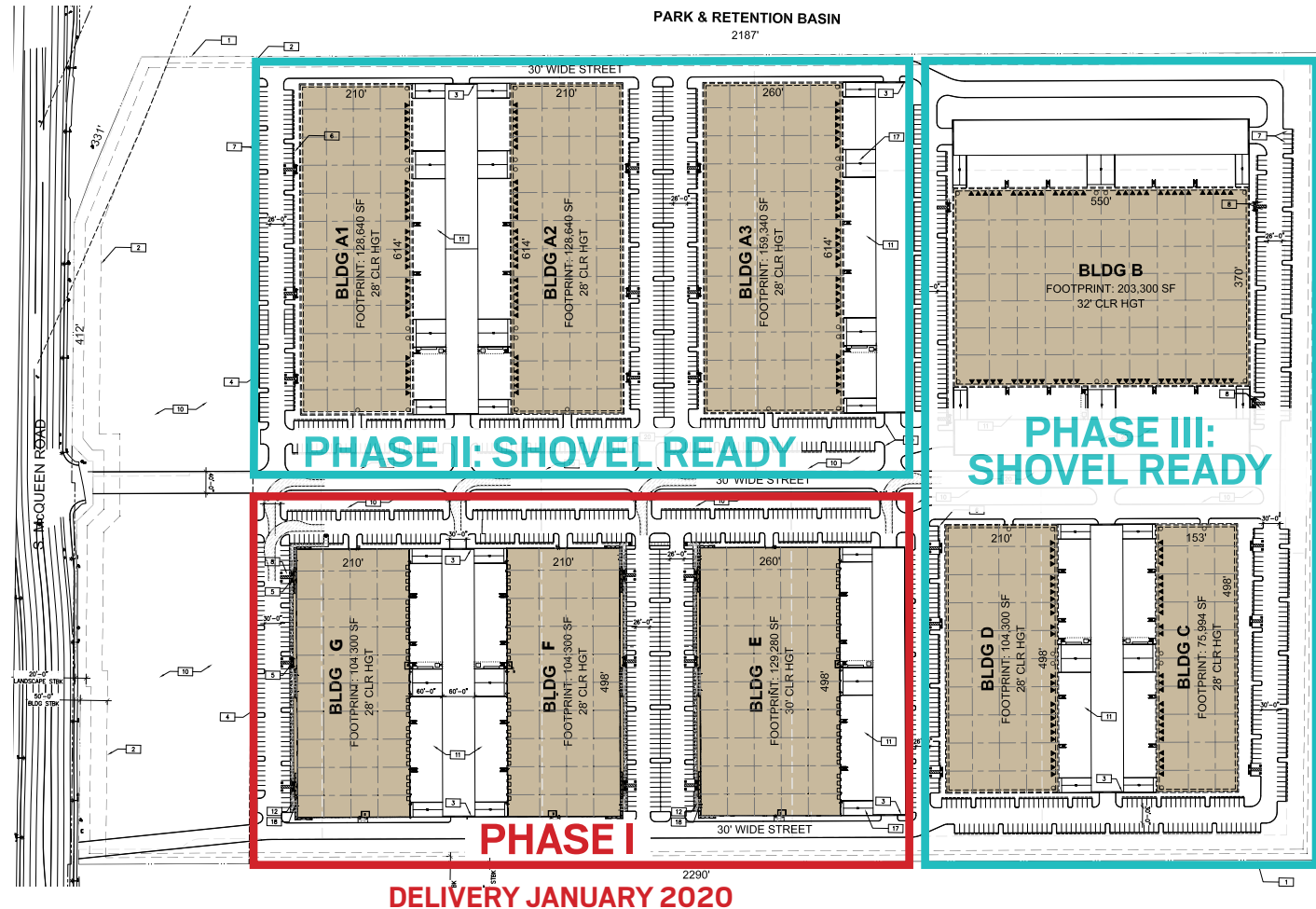


# CHANDLER AIRPORT COMMERCE PARK

The Chandler Airport Commerce Center is a 67 acre industrial park being developed by Ryan Companies. Located at the southeast corner of Queen Creek & McQueen Road, the park and buildings will be designed to accommodate a wide range of industrial users of all sizes. Conveniently located over 1 mile south of Loop 202 with a full diamond interchange.

## PROJECT FEATURES:

- Phase 1 Building Stats: Building E - 129,280 SF  
Building F - 104,300 SF  
Building G - 104,300 SF
- Divisible to ±20,000 SF
- Build-To-Suit Available
- Clear Heights: Building A & B - 32'  
Building C, D, & E - 30'  
Building F & G - 28'
- 50' x 52' Column Spacing
- 60' Speed Bay on Each Building
- 1500' of McQueen Road Frontage
- ESFR Sprinklered
- SRP Electric
- 190' Truck Courts
- 3,000 Amp Service
- City of Chandler Water & Sewer
- PAD Zoning - Industrial
- Adjacent to the Chandler Airport
- Excellent Freeway Access to Loop 202 (1.7 Miles) with Full Diamond Exchange



PREMIER 67 ACRE INDUSTRIAL PARK | SEC McQUEEN RD. & QUEEN CREEK RD., CHANDLER, ARIZONA

FOR MORE INFORMATION  
PLEASE CONTACT:

**KEN McQUEEN**  
PRINCIPAL  
602.474.9564  
kmcqueen@learizona.com

**CHRIS McCLURG, SIOR**  
PRINCIPAL  
602.954.3766  
cmclurg@learizona.com

**GRANT KINGDON**  
ASSOCIATE  
602.474.9504  
gkingdon@learizona.com

A JOINT VENTURE BY:



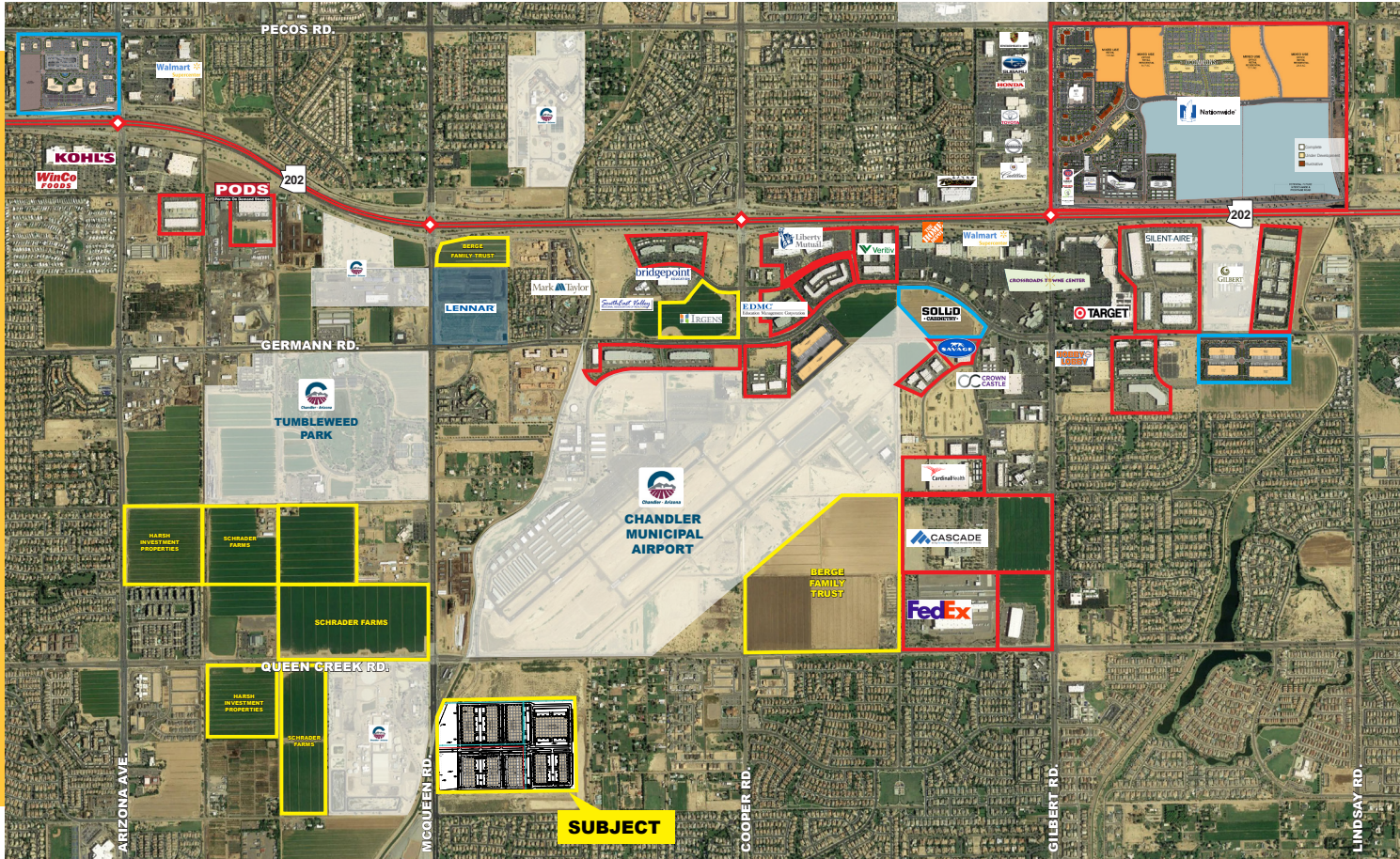
EXCLUSIVELY LISTED BY:



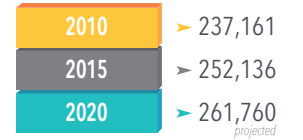
# CHANDLER AIRPORT COMMERCE PARK

## WELCOME TO CHANDLER, AZ

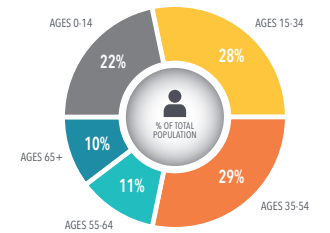
Chandler boasts a strong employment base that attracts and retains high quality employees, many of whom make Chandler their home. With a population of nearly 250,000 residents (median age of 31.7), this city is home to over 102,200 housing units, and growing. Chandler is characterized by its abundant workforce with a demographic that is capable of supporting a range of businesses including distribution/logistics, manufacturing, e-commerce, and third party logistics providers.



### Population Growth

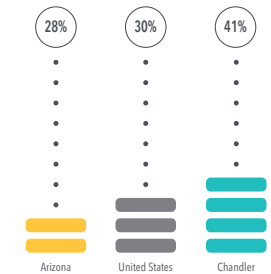


### Age Breakdown



### Education Level

Percentage of Persons Age 25+, Bachelor's Degree or Higher



## PREMIER 67 ACRE INDUSTRIAL PARK | SEC McQUEEN RD. & QUEEN CREEK RD., CHANDLER, ARIZONA

FOR MORE INFORMATION  
PLEASE CONTACT:

**KEN McQUEEN**  
PRINCIPAL  
602.474.9564  
kmcqueen@learizona.com

**CHRIS McCLURG, SIOR**  
PRINCIPAL  
602.954.3766  
cmclurg@learizona.com

**GRANT KINGDON**  
ASSOCIATE  
602.474.9504  
gkingdon@learizona.com

A JOINT VENTURE BY:



EXCLUSIVELY LISTED BY:

