

PARK LAKE PLAZA

10161 CENTURION PKWY N, JACKSONVILLE, FL 32256

OFFICE SUITES
FOR LEASE



A prominent Class A building in the heart of Deerwood Park, Jacksonville's premier submarket for high-end office properties.

- Visible from both Butler Blvd & Southside Blvd
- Beautifully landscaped with lakeside views
- Floor-to-ceiling glass and 10' ceiling heights
- Conveniently located near retail, restaurants, and banking
- Near the Butler Blvd & Southside Blvd interchange
- Ample Parking

Joe Scavetto, VP Brokerage
Phone: (904) 424-9000
js@naihallmarkpartners.com

NAI Hallmark

www.naihallmarkpartners.com

6675 Corporate Center Parkway, Suite 100
Jacksonville, FL 32216 • (904) 363-9002

The information contained herein was obtained from reliable sources and is believed to be correct. However, all information presented should be verified as it is subject to errors and omissions. Property may be withdrawn from the market at any time without further notice. Copyright © 2017 NAI Hallmark Partners, LLC.

Last Updated: June 13, 2018

PARK LAKE PLAZA

10161 CENTURION PKWY N, JACKSONVILLE, FL 32256

PROPERTY
PHOTOS



Joe Scavetto, VP Brokerage
Phone: (904) 424-9000
js@naihallmarkpartners.com

NAI Hallmark

www.naihallmarkpartners.com

6675 Corporate Center Parkway, Suite 100
Jacksonville, FL 32216 • (904) 363-9002

The information contained herein was obtained from reliable sources and is believed to be correct. However, all information presented should be verified as it is subject to errors and omissions. Property may be withdrawn from the market at any time without further notice. Copyright © 2017 NAI Hallmark Partners, LLC.

Last Updated: June 13, 2018

PARK LAKE PLAZA

10161 CENTURION PKWY N, JACKSONVILLE, FL 32256

Suite		Rentable Square Feet	Full Service Asking Rate (\$/RSF/YR)
105	PROMINENT LOCATION AT MAIN BUILDING ENTRANCE, WITH FULL STOREFRONT GLASS BETWEEN SUITE AND LOBBY.	897	\$23.50
120	OPEN SPACE WITH ONE FULLY WINDOWED EXTERIOR WALL WITH SCENIC VIEW.	383	\$24.50
160	EXTREMELY EFFICIENT LAYOUT WITH THREE WINDOWED OFFICES, A 21' X 12' CONFERENCE ROOM, AND SMALL RECEPTION AREA. SCENIC VIEW.	1,171	\$23.50
320	THREE OFFICES WITH LARGE CONFERENCE ROOM, LARGE RECEPTION, BREAK ROOM, FILE STORAGE, AND IT CLOSET. CONF ROOM HAS IN-FLOOR ELECTRIC / DATA. CAN EASILY ADD OFFICE AT BACK OF SPACE. CAN ADD ANOTHER OFFICE BY DIVIDING THE CONF ROOM.	2,608	\$22.50

Joe Scavetto, VP Brokerage
Phone: (904) 424-9000
js@naihallmarkpartners.com



www.naihallmarkpartners.com

6675 Corporate Center Parkway, Suite 100
Jacksonville, FL 32216 • (904) 363-9002

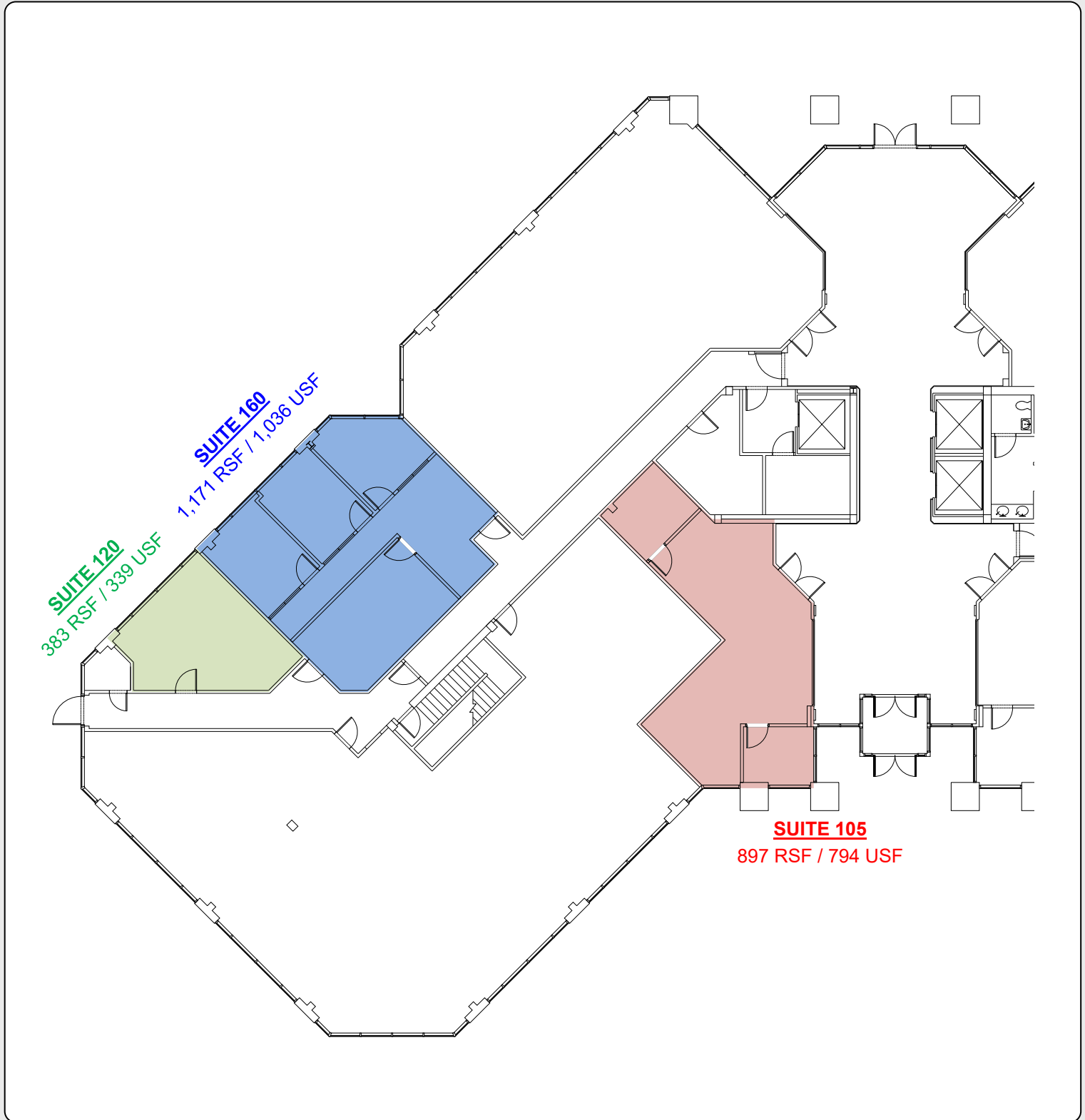
The information contained herein was obtained from reliable sources and is believed to be correct. However, all information presented should be verified as it is subject to errors and omissions. Property may be withdrawn from the market at any time without further notice. Copyright © 2017 NAI Hallmark Partners, LLC.

Last Updated: June 13, 2018

PARK LAKE PLAZA

10161 CENTURION PKWY N, JACKSONVILLE, FL 32256

FIRST FLOOR



SUITE 120
383 RSF / 339 USF

SUITE 160
1,171 RSF / 1,036 USF

SUITE 105
897 RSF / 794 USF

Joe Scavetto, VP Brokerage
Phone: (904) 424-9000
js@naihallmarkpartners.com



www.naihallmarkpartners.com

6675 Corporate Center Parkway, Suite 100
Jacksonville, FL 32216 • (904) 363-9002

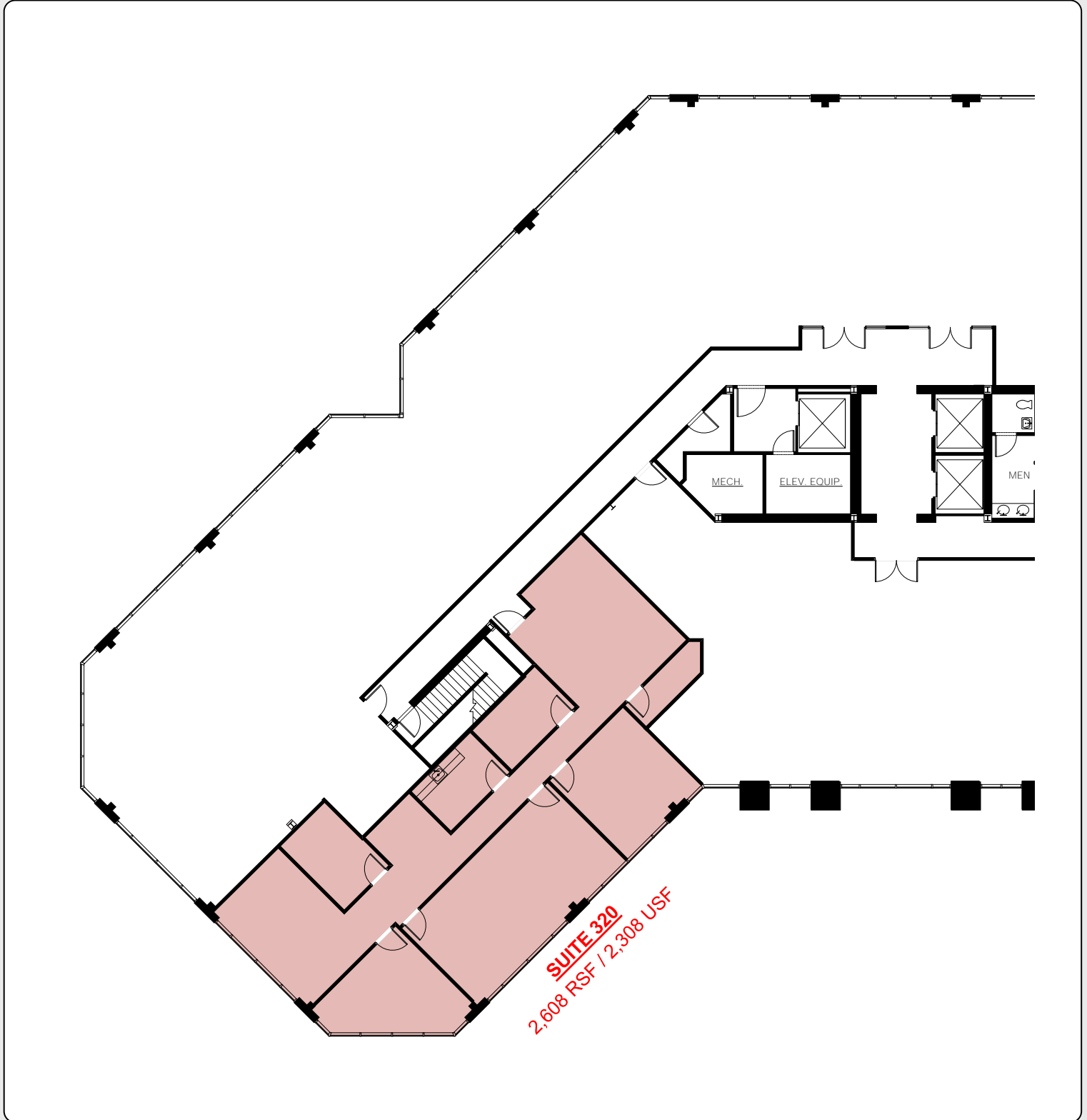
The information contained herein was obtained from reliable sources and is believed to be correct. However, all information presented should be verified as it is subject to errors and omissions. Property may be withdrawn from the market at any time without further notice. Copyright © 2017 NAI Hallmark Partners, LLC.

Last Updated: June 13, 2018

PARK LAKE PLAZA

10161 CENTURION PKWY N, JACKSONVILLE, FL 32256

THIRD FLOOR



Joe Scavetto, VP Brokerage
Phone: (904) 424-9000
js@naihallmarkpartners.com



www.naihallmarkpartners.com

6675 Corporate Center Parkway, Suite 100
Jacksonville, FL 32216 • (904) 363-9002

The information contained herein was obtained from reliable sources and is believed to be correct. However, all information presented should be verified as it is subject to errors and omissions. Property may be withdrawn from the market at any time without further notice. Copyright © 2017 NAI Hallmark Partners, LLC.

Last Updated: June 13, 2018

PARK LAKE PLAZA

10161 CENTURION PKWY N, JACKSONVILLE, FL 32256

AERIAL
MAP



Joe Scavetto, VP Brokerage
Phone: (904) 424-9000
js@naihallmarkpartners.com

NAI Hallmark

www.naihallmarkpartners.com

6675 Corporate Center Parkway, Suite 100
Jacksonville, FL 32216 • (904) 363-9002

The information contained herein was obtained from reliable sources and is believed to be correct. However, all information presented should be verified as it is subject to errors and omissions. Property may be withdrawn from the market at any time without further notice. Copyright © 2017 NAI Hallmark Partners, LLC.

Last Updated: June 13, 2018