

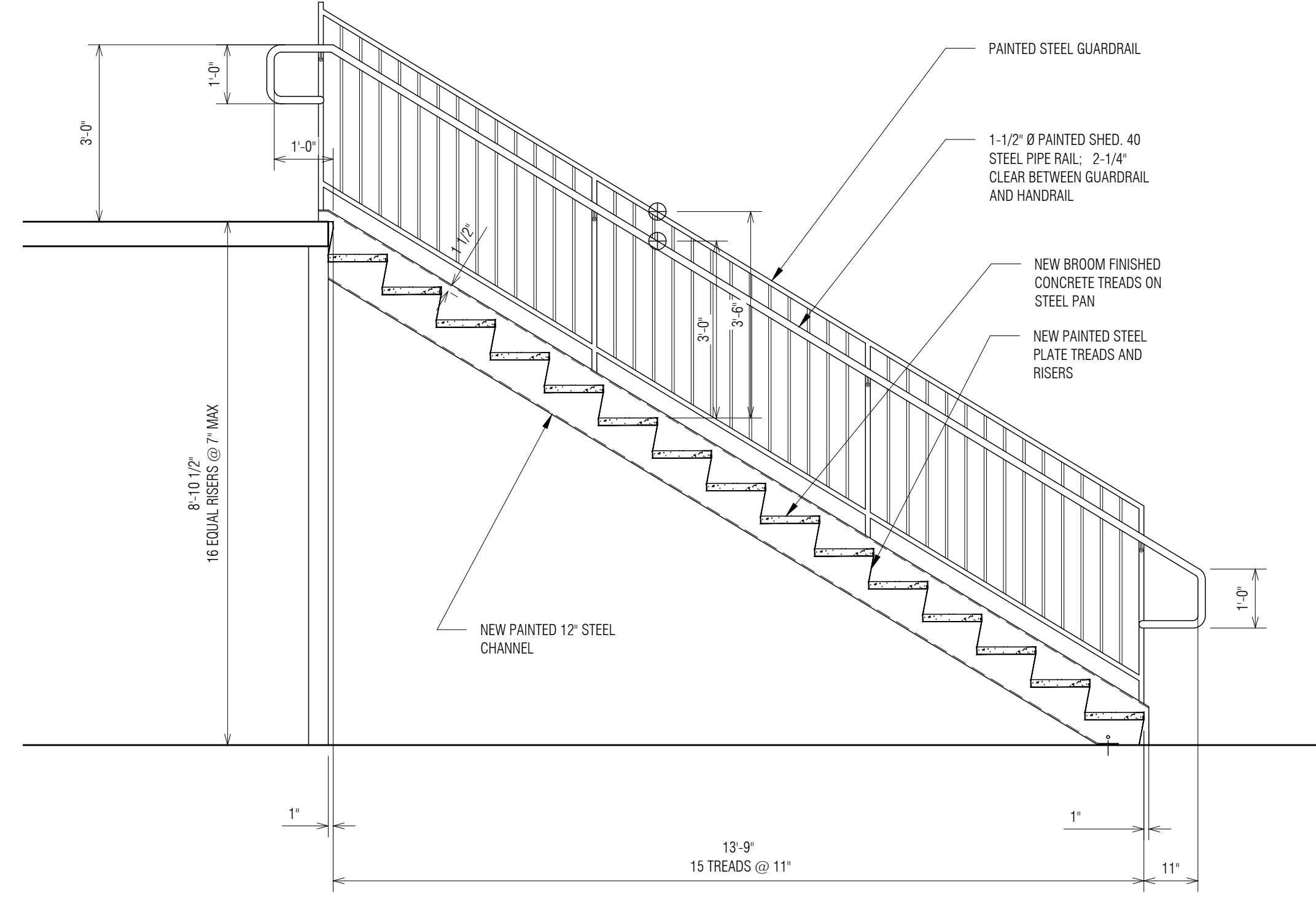
**SITE PLAN / DEMOLITION PLAN**  
SC: 1/8" = 1'-0"

**LEGEND**

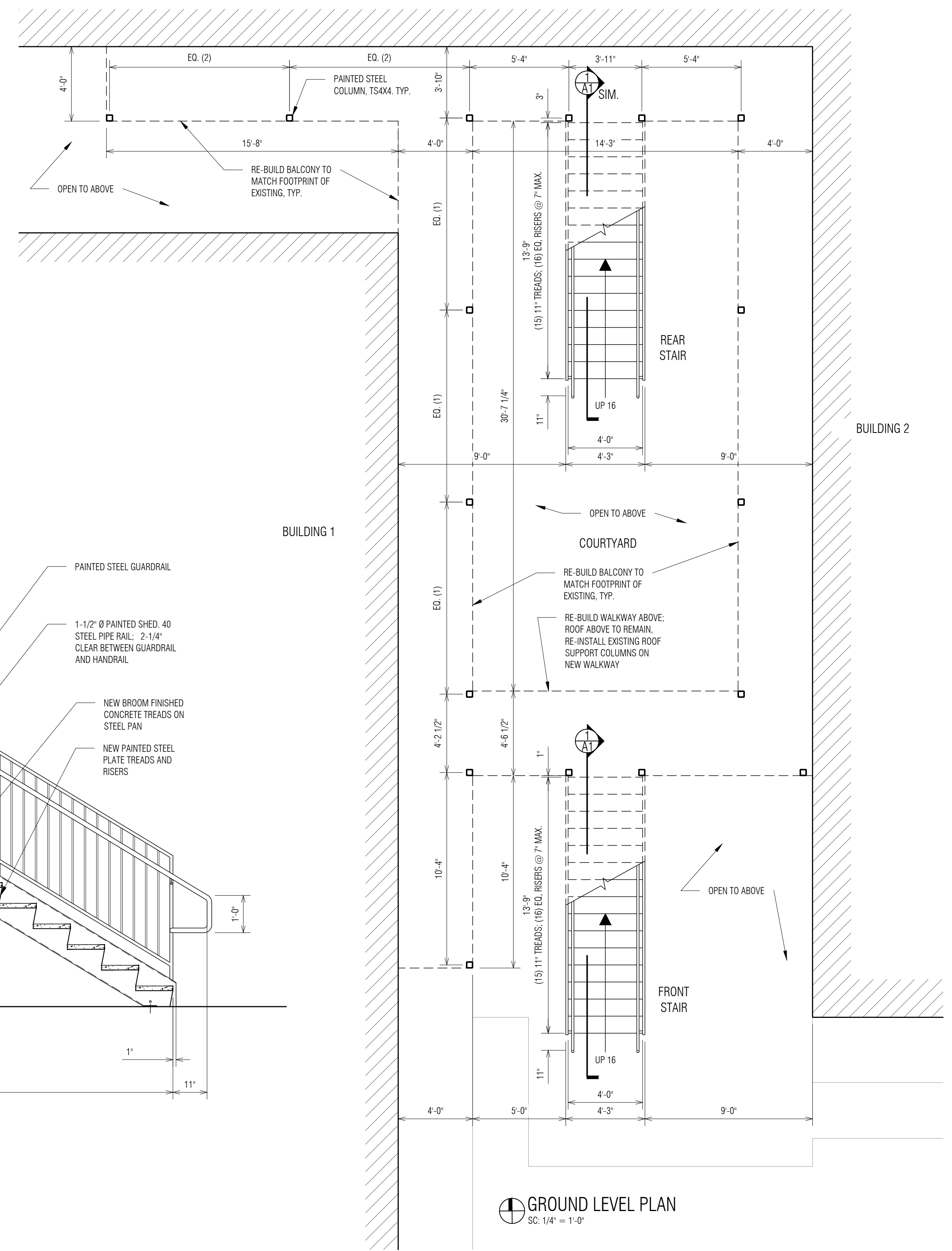
- DEMOLISH, RE: DEMOLITION NOTES
- EXISTING GRASS OR GRAVEL
- EXISTING CONCRETE PAVING

**DEMOLITION NOTES:**

1. REMOVE BOTH STAIRS / RAILS.
2. REMOVE BALCONIES AND ALL COLUMNS.
3. SALVAGE BALCONY RAILS FOR USE ON NEW BALCONIES.
4. RETAIN COLUMN SUPPORTED ROOF AT FRONT STAIR, CROSSOVER BETWEEN BUILDINGS 1 AND 2, ABOVE 2ND FLOOR LANDING, SHORE DURING CONSTRUCTION; REINSTALL EXISTING COLUMNS ON NEW BALCONY.



**STAIR SECTION**  
1/2" = 1'-0"



**GROUND LEVEL PLAN**  
SC: 1/4" = 1'-0"

PRELIMINARY  
NOT FOR CONSTRUCTION

**MODIFICATIONS TO EXTERIOR STAIRS AND BALCONY**  
3909 Tchoupitoulas Street  
New Orleans, LA 70115

**LKHarmon Architects**  
A Professional Architectural Corporation  
6238 Argonne Boulevard  
New Orleans, Louisiana 70124  
504.485.5870 harmon@lkharmearchitects.com

1.8.2019

A1

LKH#5218

NOTE: DRAWING SCALES INDICATED ARE VALID ONLY IF PRINTED ON 24"x36" SHEETS.