

KOIN CENTER

222 SW Columbia St
Portland, OR 97210

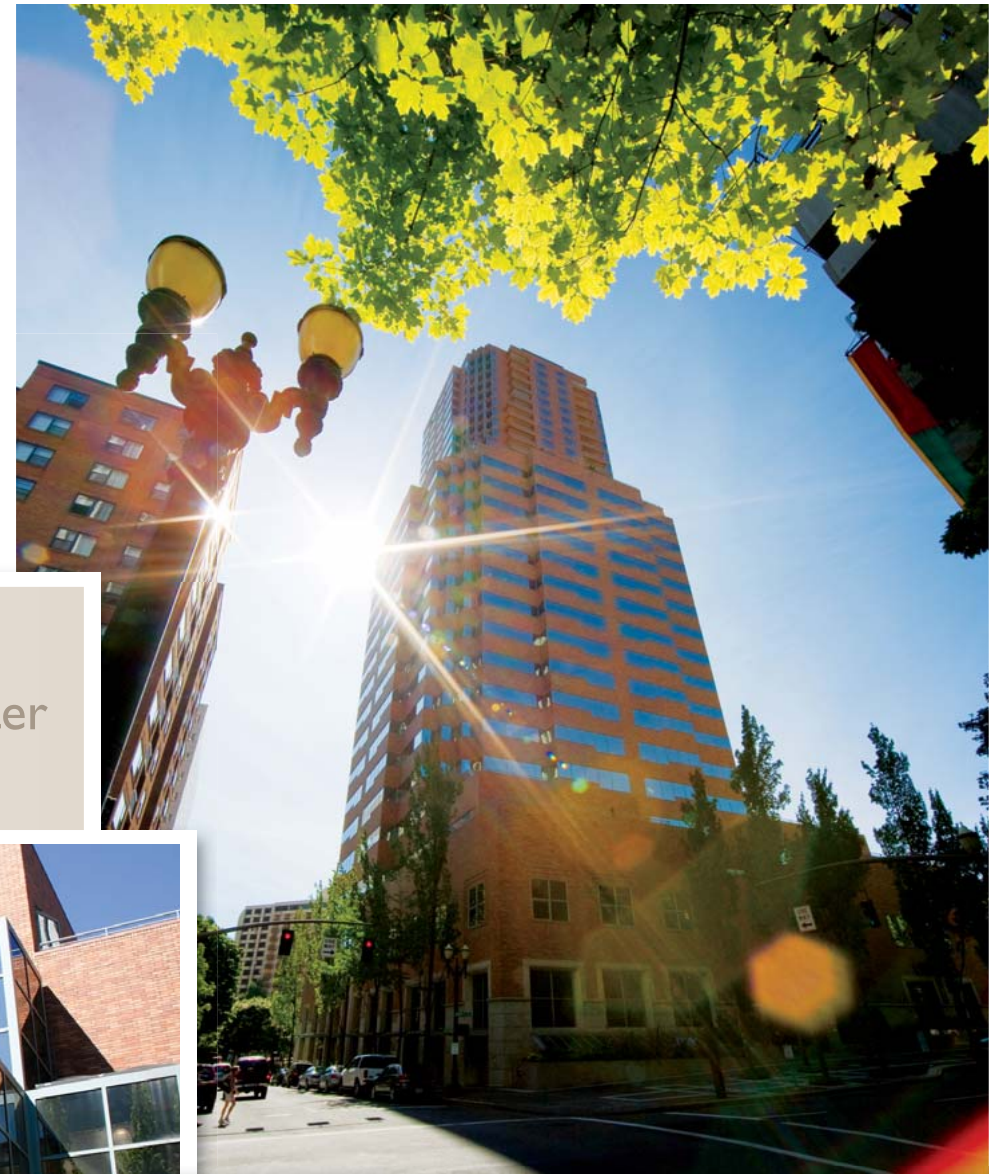
FOR LEASE

On-Site Amenities

- ✓ beautiful river and mountain views
- ✓ easy access to Naito Parkway, I-5 and I-405
- ✓ on-site gym and showers/sauna
- ✓ new, large building conference room
- ✓ Mika Japanese Restaurant (Sushi Bar)
- ✓ on-site amenities include Morton's restaurant, Sundry Shop and Quizno's
- ✓ two blocks from the waterfront, adjacent to Keller Auditorium
- ✓ adjacent to Portland's largest parking garage



Live. Work.
At the center
of it all.



KOIN CENTER 222 SW Columbia St Portland, OR 97201

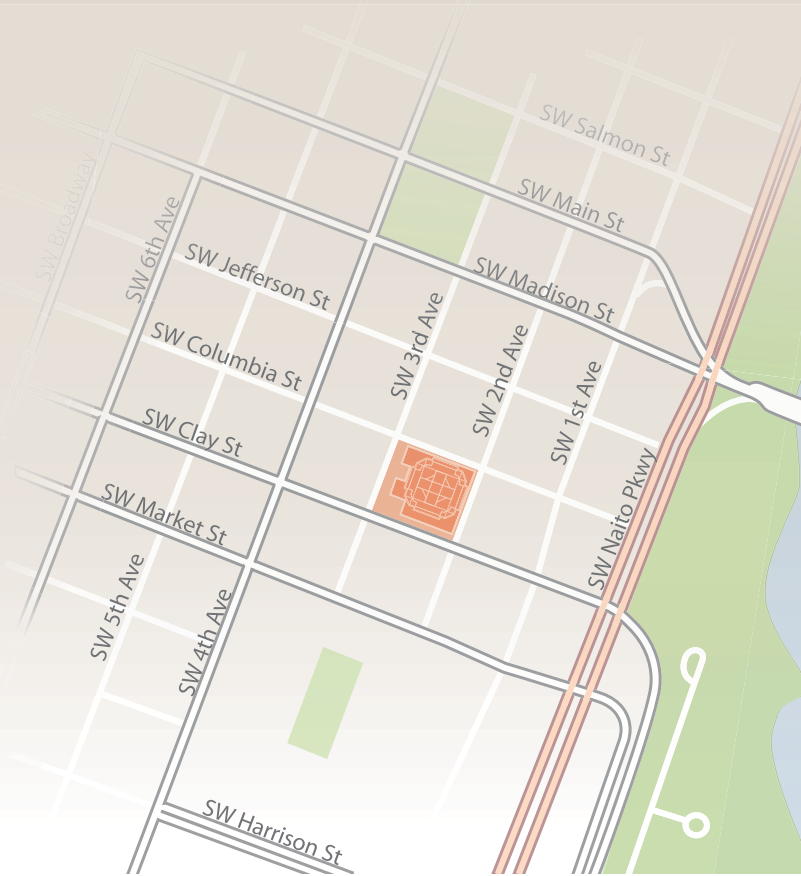
Designed by the Zimmer Gunsul Frasca Partnership, KOIN Center opened in 1984 and has become the focal point of the downtown skyline



For more information and inspection please contact:

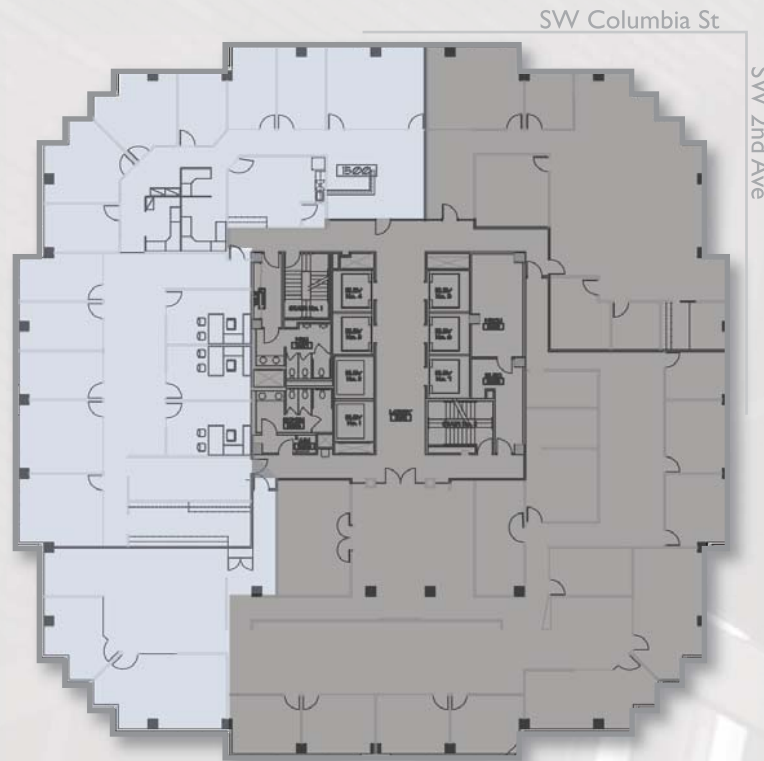
Tom Usher
503.279.1777
tom.usher@cushwake.com

Doug Deurwaarder
503.279.1752
doug.deurwaarder@cushwake.com

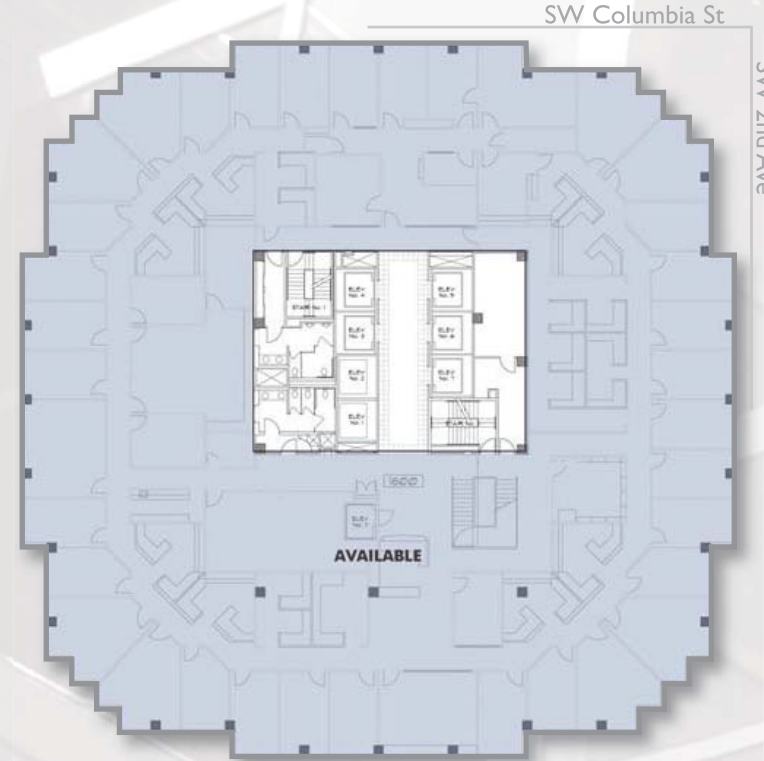


No warranty or representation, express or implied, is made as to the accuracy of the information contained herein, and same is submitted subject to errors omissions, change of price, rental or other conditions, withdrawal without notice, and to any specific listing conditions, imposed by our principals.

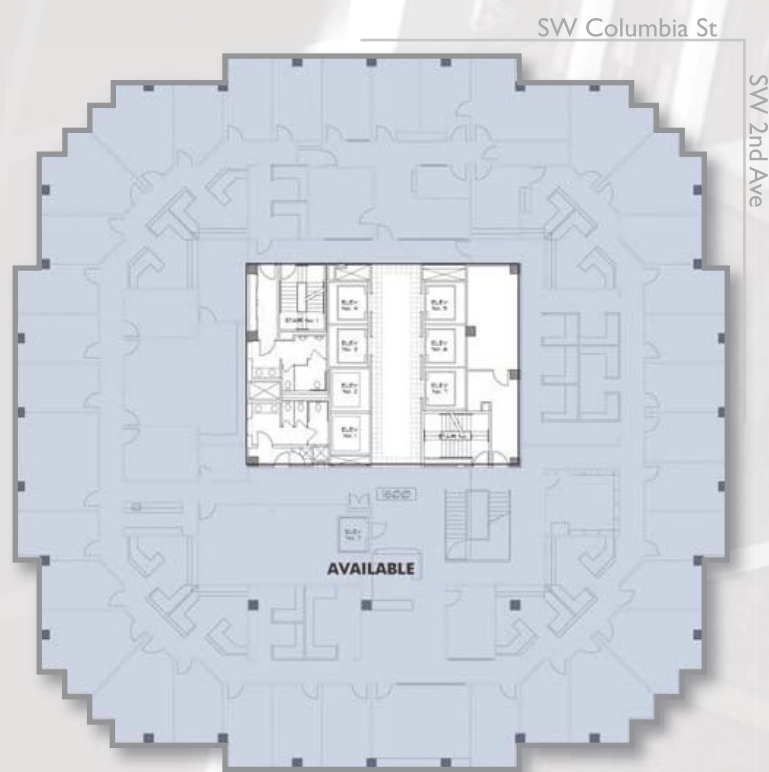
15th Floor
8,425 sf



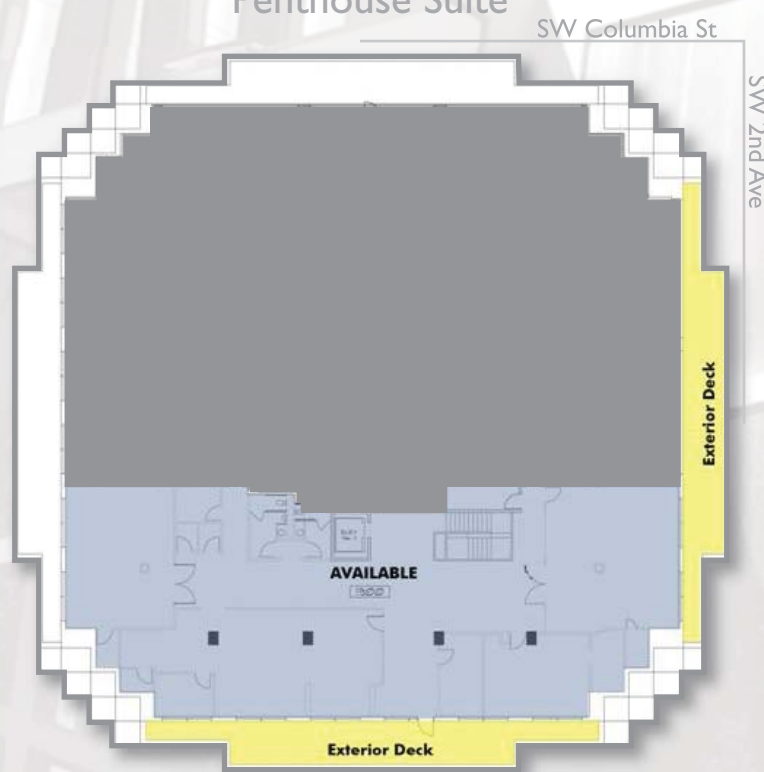
17th Floor
19,484 sf



18th Floor
19,484 sf



19th Floor
6,433 sf
Penthouse Suite



KOIN CENTER
Portland's Premier Office Space

FLR	SUITE	SQ FT	RATE	FULL SERVICE	COMMENTS
3 rd	Suite 350	11,191	\$24.00/sf	✓	High Ceilings / Creative Space
LEASED	9th Suite 900	5,441	\$25.00/sf	✓	Wide Open Space / N. Half of Floor
9 th	Suite 950	3,905	\$25.00/sf	✓	Wide Open Space / NW Views
10 th	Suite 1000	4,273	\$25.00/sf	✓	Excellent Condition / Views to the west
11 th	Suite 1111	1,864	\$25.00/sf	✓	Ideally Suited for Small Professional Firm
LEASED	15th Suite 1575	7,274	\$26.50/sf	✓	Executive Offices / 11 Private Offices
15 th	Suite 1500	8,425	\$26.50/sf	✓	Mix of Private Offices and Open Space
16 th	Suite 1600	1,287	\$27.00/sf	✓	2 Perimeter Offices / Views to the east
17 th	Suite 1700	19,484	\$28.00/sf	✓	37 Perimeter Offices / 2 Conference Rooms
18 th	Suite 1800	19,484	\$28.50/sf	✓	35 Perimeter Offices / 3 Conference Rooms
19 th	Suite 1900	6,433	\$28.50/sf	✓	Exclusive Offices / 2 Large Decks



The top three floors of the iconic KOIN Center are available, totaling 45,401 RSF

