

Approx. 2,100 SF Office Building for Lease

CORNER OF ACACIA DRIVE & PARK VIEW DRIVE
(Just 150' West of Monterey Avenue)



REDUCED!
\$1.70/SF
NNN



Excellent Location!



72915 Parkview Dr., Palm Desert, CA

2016 Demographics	1 Mile	3 Miles	5 Miles
Population	8,799	42,792	73,767
Avg. HH Income	\$37,456	\$55,536	\$58,716

For Lease: \$1.70/SF + NNN

Approximately
2,100± Sq Ft



- Beautiful Free-Standing Office Building
- Seven (7) Offices Plus Conference Area
- Excellent Signage & Visibility
- Close to Major Retail Centers
- Two (2) Restrooms
- Two (2) New A/C Units



www.baxleyproperties.com
Phone: 760-773-3310
Fax: 760-773-3013
73712 Alessandro Drive, Ste B-4, Palm Desert, CA 92260

John Marshall
john@baxleyproperties.com
760-774-9763

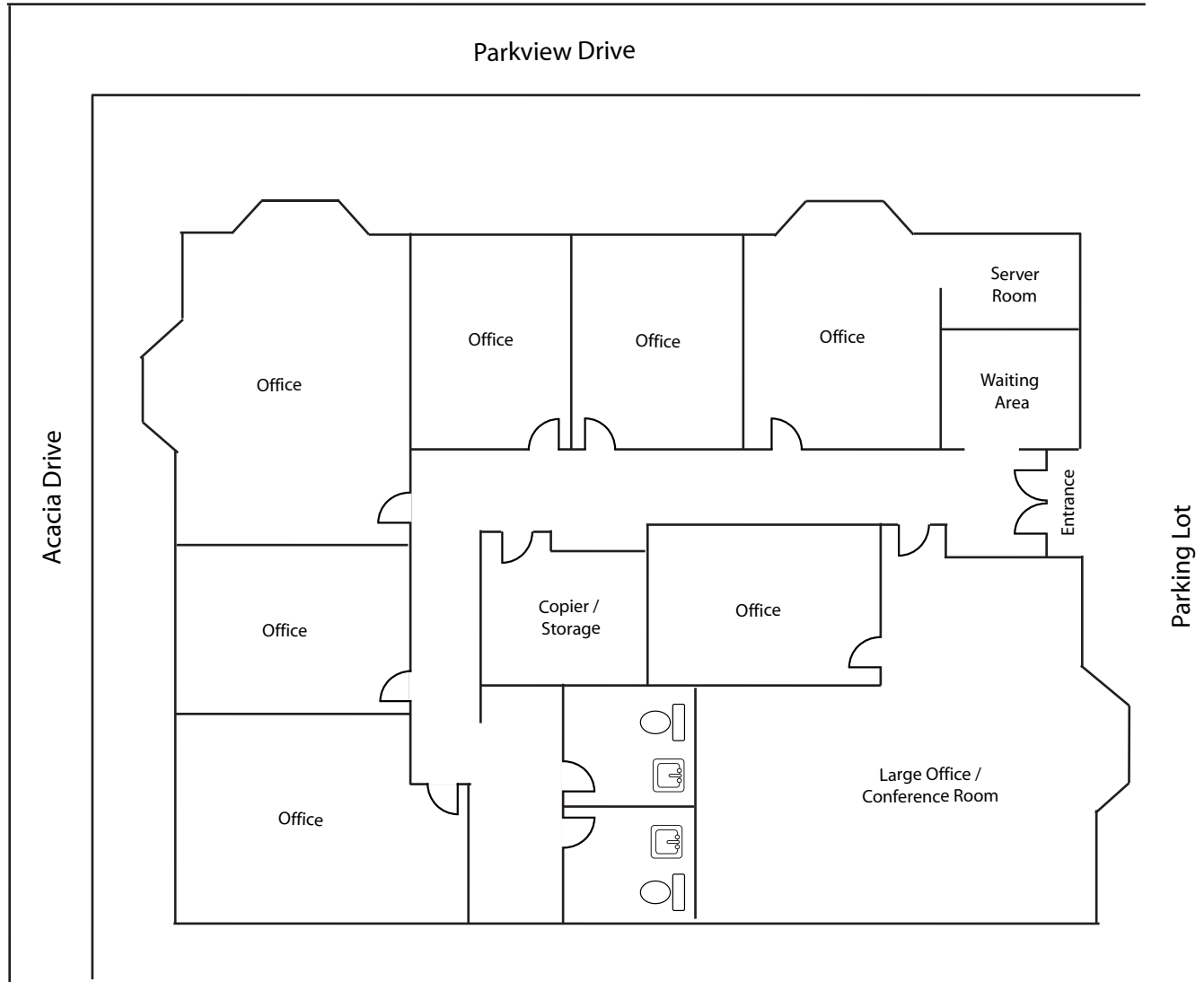
CAL BRE License # 00684680

DISCLAIMER:
The information above has been obtained from sources believed reliable. While we do not doubt its accuracy, we have not verified it and make no guarantee, warranty or representation about it. It is your responsibility to independently confirm its accuracy and completeness. Any projections, opinions, assumptions or estimates used are for example only, and do not represent the current or future performance of the property.

Approx. 2,100 SF Office Building for Lease

72915 Parkview Drive, Palm Desert, CA

Floor Plan



All measurements are approximate.

Baxley
Properties, Inc.

www.baxleyproperties.com
Phone: 760-773-3310
Fax: 760-773-3013
73712 Alessandro Drive, Ste B-4, Palm Desert, CA 92260

John Marshall
john@baxleyproperties.com
760-774-9763

CAL BRE License # 00684680

DISCLAIMER:

The information above has been obtained from sources believed reliable. While we do not doubt its accuracy, we have not verified it and make no guarantee, warranty or representation about it. It is your responsibility to independently confirm its accuracy and completeness. Any projections, opinions, assumptions or estimates used are for example only, and do not represent the current or future performance of the property.