



MODERN 11,000 SF BUILDING + 7,500 SF YARD FOR SALE W/ NATIONAL TENANT

FEATURES:

- 11,000 Sq. Ft. 2-Story Building + 7,500 Sq. Ft. Land Fenced, Paved & Secure
- 6,250 Sq. Ft. Ground Floor w/ 20'-30' Ceiling Height
- 3,750 Sq. Ft. Second Floor Finished Office
- 1,000 Sq. Ft. Mezzanine
- 4 Drive-In Doors

TRANSPORTATION:



B57 FLUSHING AVE/60TH ST

NEARBY:

- Queens Midtown Expressway
- Long Island Expressway
- Brooklyn Queens Expressway

LEASE INFO:

- N.O.I.: \$334,000.00 Per Annum
- 3% Annual Increase
- Lease Term: Through June 30, 2022 + 5 year option



SALE PRICE:

\$4,950,000.00

R.E. TAXES:

\$68,621.00

58-17 59TH DRIVE, MASPETH, NY

BLOCK:

2654

LOT:

6

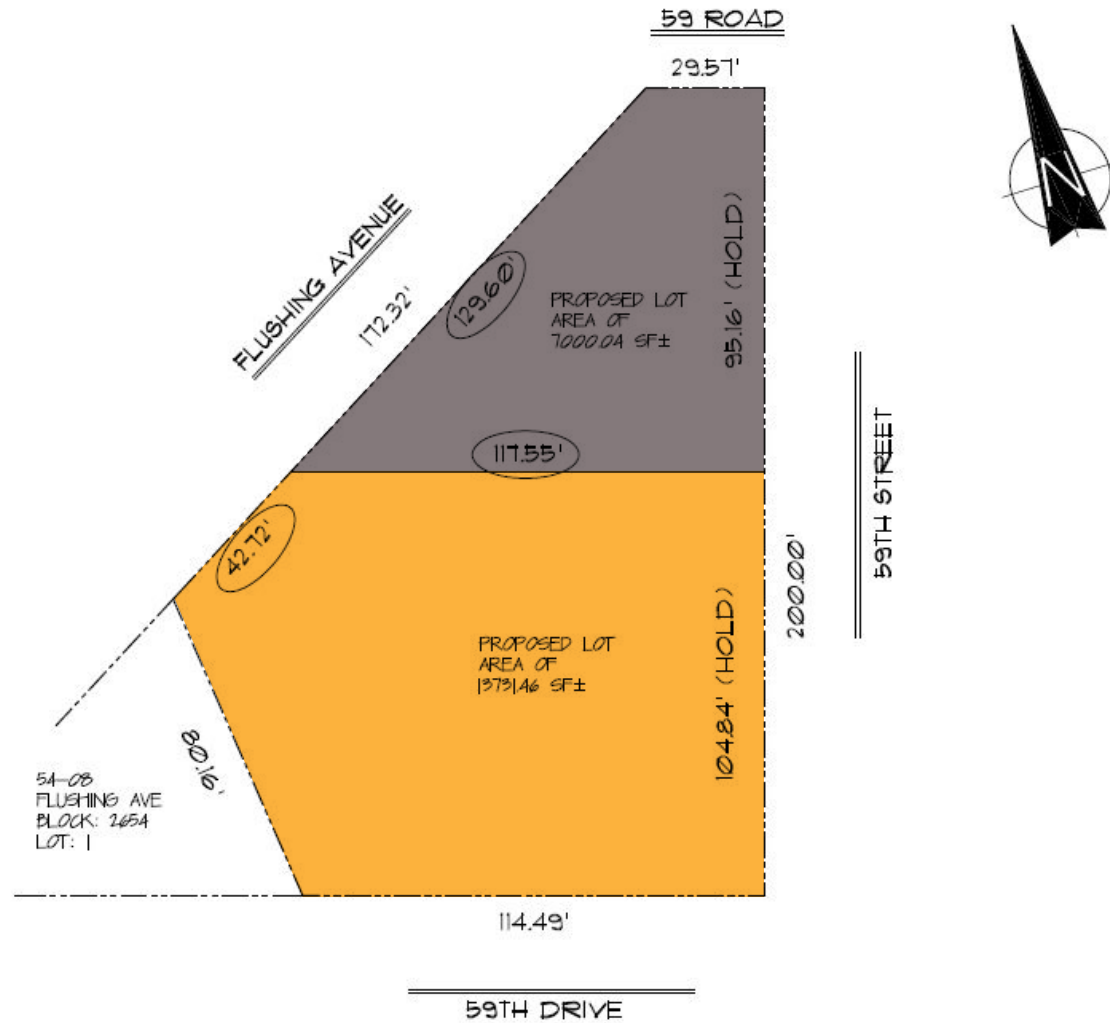
ZONING:

M1-1

For Information About This Property
Contact Exclusive Agents:

George Margaronis, Partner
gmargaronis@pinnaclereny.com
718-784-8404

Decio Baio, Partner
dbaio@pinnaclereny.com
718-784-8436





PINNACLE REALTY

OF NEW YORK, LLC

www.pinnacleereny.com

34-07 Steinway Street, Suite 202
Long Island City, NY 11101

718-784-8282

