

# The Shoppes at Red Bug

7505 Red Bug Lake Road  
Oviedo, FL 32765  
Lat 28.651, Long -81.242

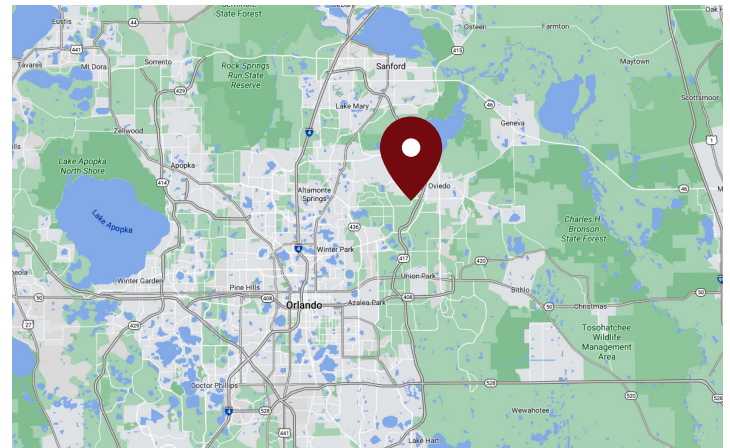
FOR LEASE



## END CAP RETAIL SPACE AVAILABLE

### PROPERTY HIGHLIGHTS

- End Cap is Available, Closest to Sonny's BBQ
- Nearby Major Medical Growth Such as Advent Health Hospital
- Red Bug Lake Road Runs East/West Between State Road 436 and 417 (Seminole Expressway) and then Turns into W. Mitchell Hammock Road
- Space is in Excellent Condition and Move-In Ready, Currently Occupied by Slone Furniture Outlet on Month-to-Month Lease
- Large Panel Available on Pylon Sign
- Street Front Retail with Visibility from the Road
- Cross Access to Multiple Businesses and Amenities



DEMOGRAPHICS	1 Mile	3 Miles	5 Miles
Total Population	5,200	69,283	199,330
Daytime Population	6,230	64,613	188,232
Total Households	1,857	25,900	72,595
Avg. HH Income	\$123,367	\$114,705	\$96,030

Data provided by Placer Labs Inc. (www.placer.ai) & Esri

### Tracy Worrell

407.581.6219 | [tworrell@crossmanco.com](mailto:tworrell@crossmanco.com)

3333 South Orange Avenue, Suite 201, Orlando, FL

Licensed Real Estate Broker. No warranty expressed or implied has been made to the accuracy of the information provided herein, no liability assumed for error or omission.



www.crossmanco.com

# The Shoppes at Red Bug

7505 Red Bug Lake Road  
Oviedo, FL 32765  
Lat 28.651, Long -81.242



## SITE PLAN

Suite	Tenant	Size
1029	AVAILABLE	4,200
1021	J. Lauren Salon	
1017	L-Tek Nails	
1013	MetroPCS by T-Mobile	
1009	Florida Paints	
1005	Florida Paints	
1001	David's World Cycle	

TOTAL 15,032



### Tracy Worrell

407.581.6219 | [tworrell@crossmanco.com](mailto:tworrell@crossmanco.com)

3333 South Orange Avenue, Suite 201, Orlando, FL

Licensed Real Estate Broker. No warranty expressed or implied has been made to the accuracy of the information provided herein, no liability assumed for error or omission.



Crossman & Company

[www.crossmanco.com](http://www.crossmanco.com)

# The Shoppes at Red Bug

7505 Red Bug Lake Road  
Oviedo, FL 32765  
Lat 28.651, Long -81.242

## FOOT TRAFFIC OVERVIEW

EST. # OF CUSTOMERS ANNUALLY



EST. # OF VISITS ANNUALLY



AVG. VISITS / CUSTOMER



AVG. LENGTH-OF-STAY / VISIT



TOP 3 DAYS



Saturday	6,710
Friday	5,288
Thursday	5,093

# OF VISITS

TOP 3 HOURS

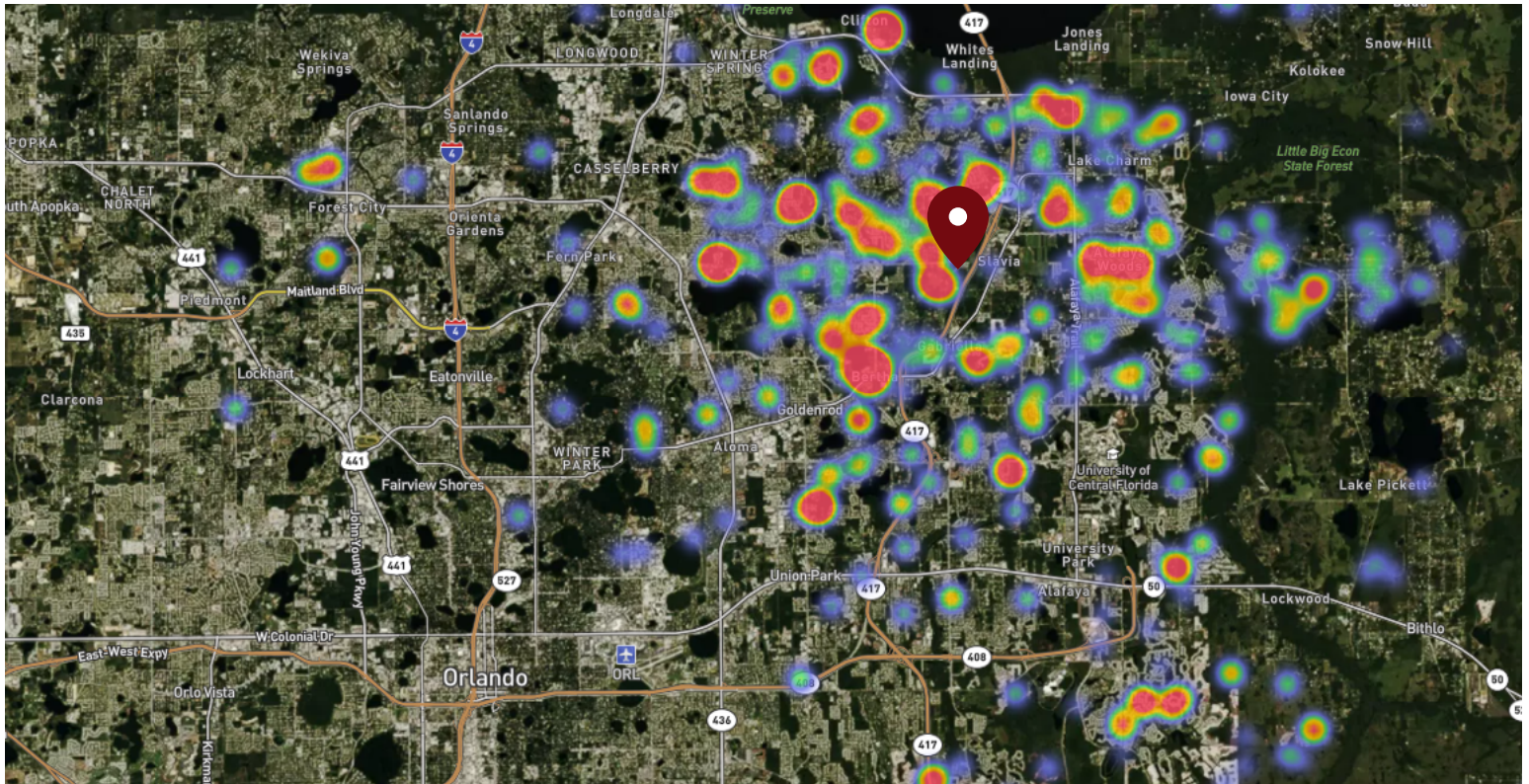


12-1 PM	7,468
3-4 PM	7,068
2-3 PM	7,002

# OF VISITS

Data provided by Placer Labs Inc. (www.placer.ai) Dec 1, 2019 - Nov 30, 2020

## SITE VISIT DENSITY



Red, orange, and yellow colors represent the location of 60% of site visitors

Data provided by Placer Labs Inc. (www.placer.ai)

**Tracy Worrell**

407.581.6219 | [tworrell@crossmanco.com](mailto:tworrell@crossmanco.com)

3333 South Orange Avenue, Suite 201, Orlando, FL

Licensed Real Estate Broker. No warranty expressed or implied has been made to the accuracy of the information provided herein, no liability assumed for error or omission.

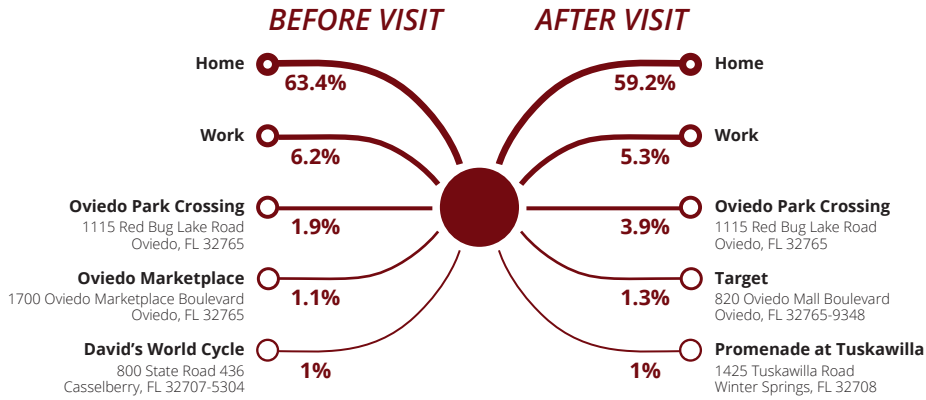


[www.crossmanco.com](http://www.crossmanco.com)

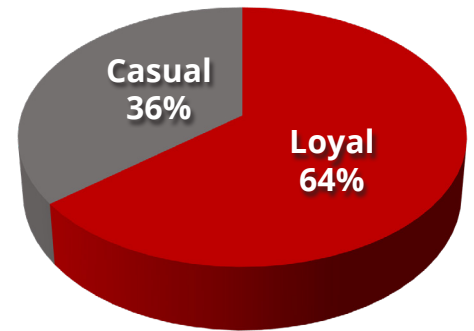
# The Shoppes at Red Bug

7505 Red Bug Lake Road  
Oviedo, FL 32765  
Lat 28.651, Long -81.242

## CUSTOMER JOURNEY - TOP 5 PLACES

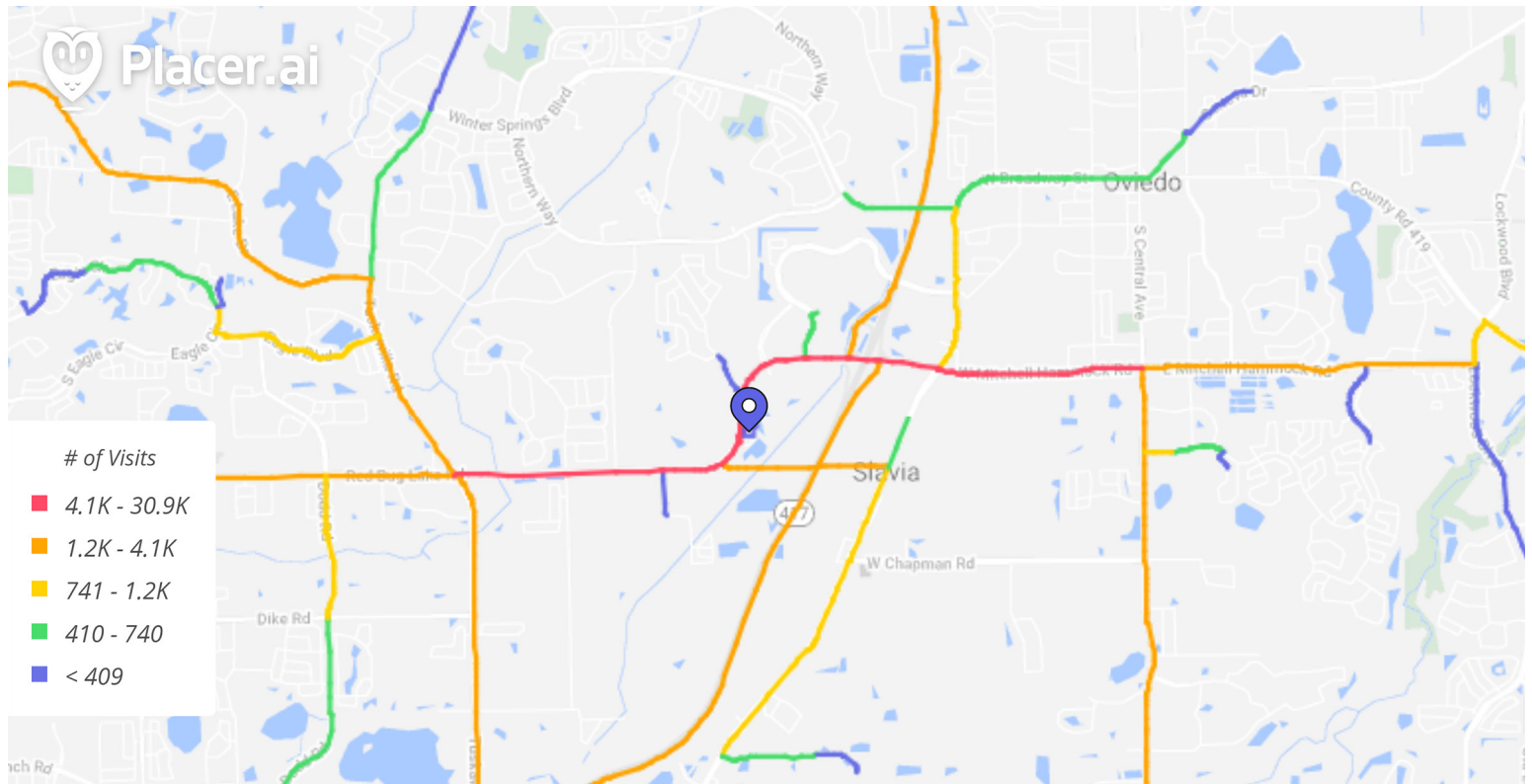


## CUSTOMER LOYALTY



Data provided by Placer Labs Inc. ([www.placer.ai](http://www.placer.ai))

## CUSTOMER JOURNEY



Data provided by Placer Labs Inc. ([www.placer.ai](http://www.placer.ai))

### Tracy Worrell

407.581.6219 | [tworrell@crossmanco.com](mailto:tworrell@crossmanco.com)

3333 South Orange Avenue, Suite 201, Orlando, FL

Licensed Real Estate Broker. No warranty expressed or implied has been made to the accuracy of the information provided herein, no liability assumed for error or omission.



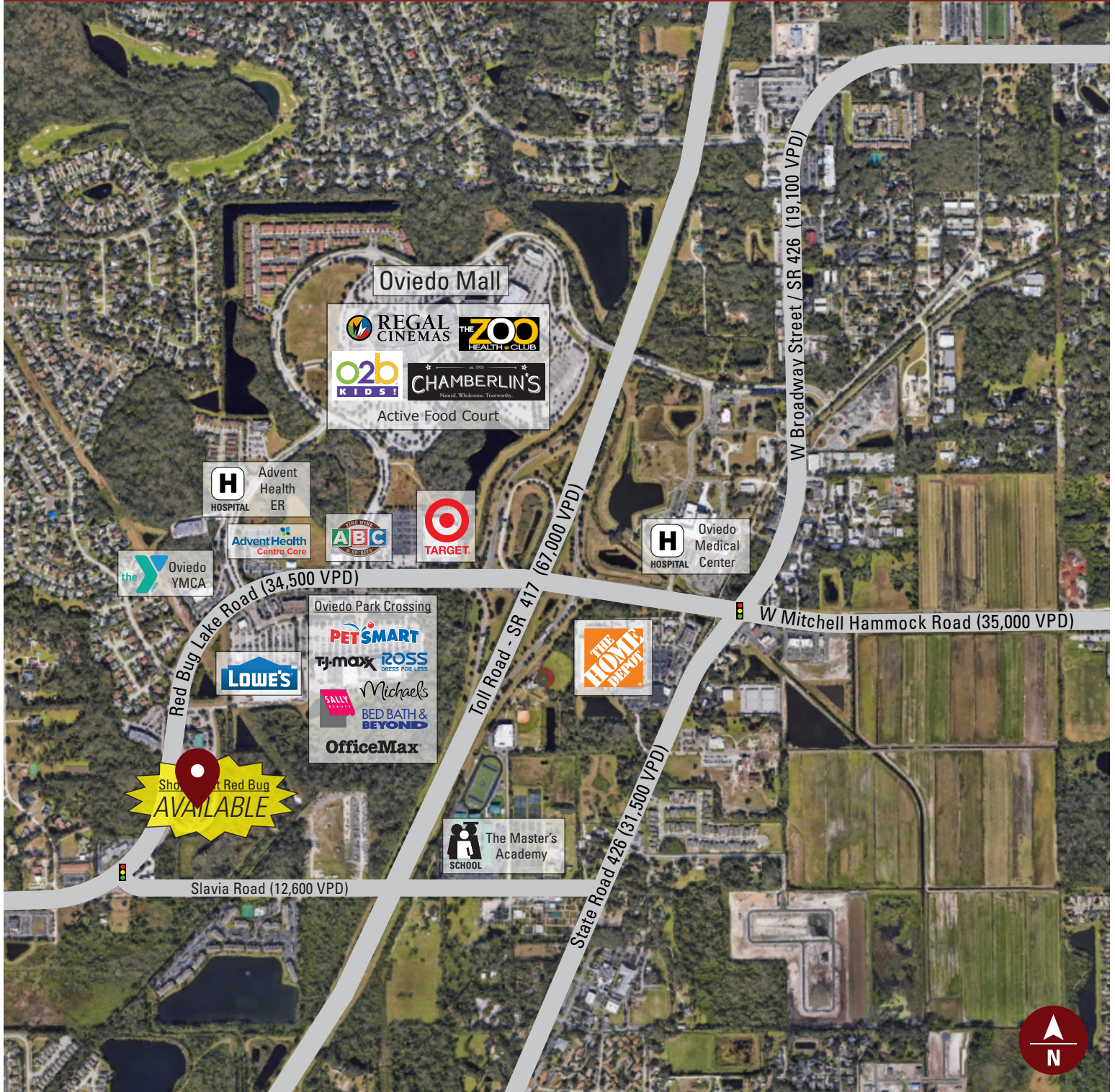
[www.crossmanco.com](http://www.crossmanco.com)

# The Shoppes at Red Bug

7505 Red Bug Lake Road

Oviedo, FL 32765

Lat 28.651, Long -81.242



**Tracy Worrell**

407.581.6219 | [tworrell@crossmanco.com](mailto:tworrell@crossmanco.com)

3333 South Orange Avenue, Suite 201, Orlando, FL

*Licensed Real Estate Broker. No warranty expressed or implied has been made to the accuracy of the information provided herein, no liability assumed for error or omission.*



Crossman & Company

[www.crossmanco.com](http://www.crossmanco.com)