

61,820 SF Sublease Available

11775 BORMAN DRIVE
ST. LOUIS, MO 63146

11775

NEWMARK
ZIMMER

11775 BORMAN DRIVE, ST. LOUIS, MO 63146

Building Summary

61,820 SF single-tenant office building

Space Size

61,820 SF

Sublease Term

Through 6/30/2024

Parking Ratio

3.5/1,000 parking ratio

Amenities

Single-Tenant office building located one mile from Westport Plaza, which contains 200,000 SF of restaurants, retail, & entertainment venues as well as two on-site hotels

Location

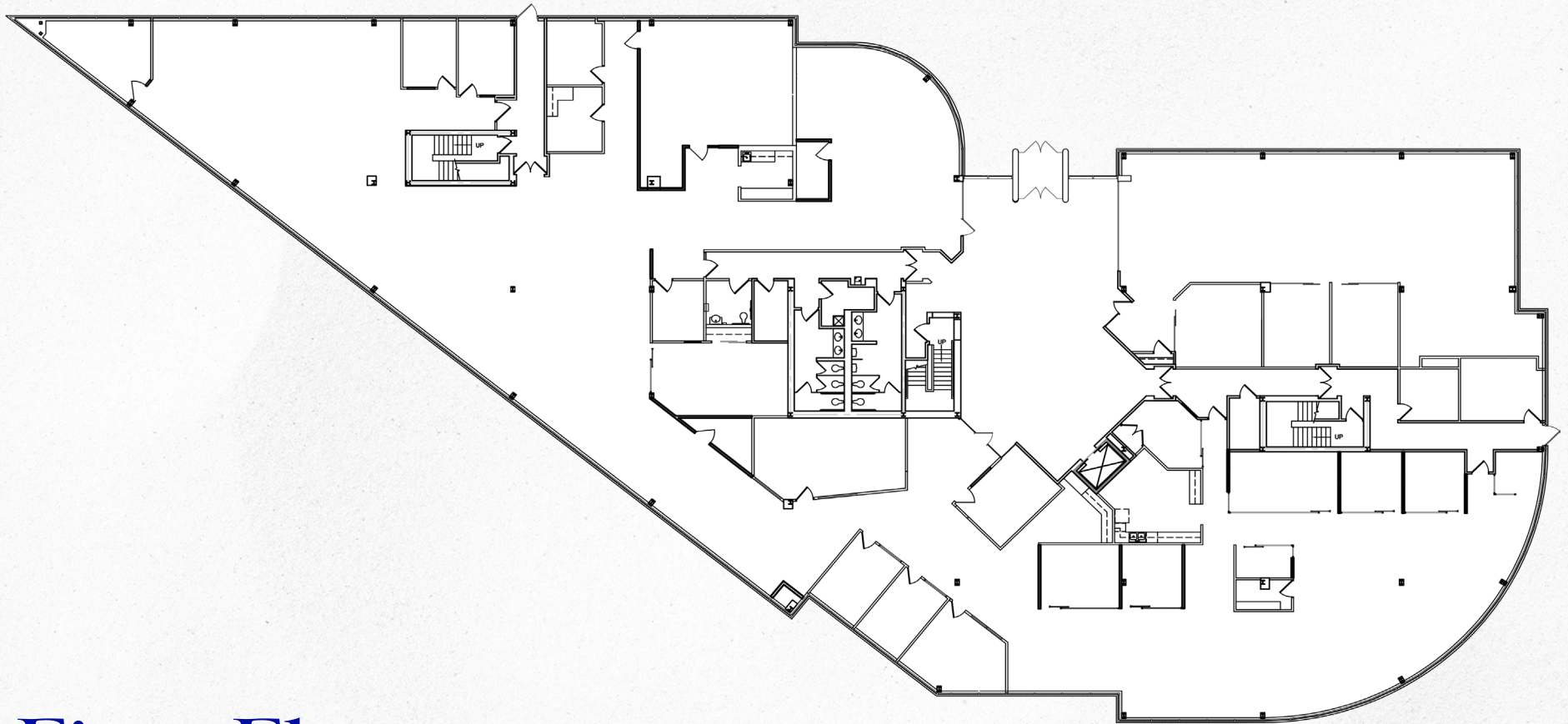
Westport submarket / I-270 & Page Avenue

Sublease Rate

\$16.00/SF, fs



11775 BORMAN DRIVE, ST. LOUIS, MO 63146

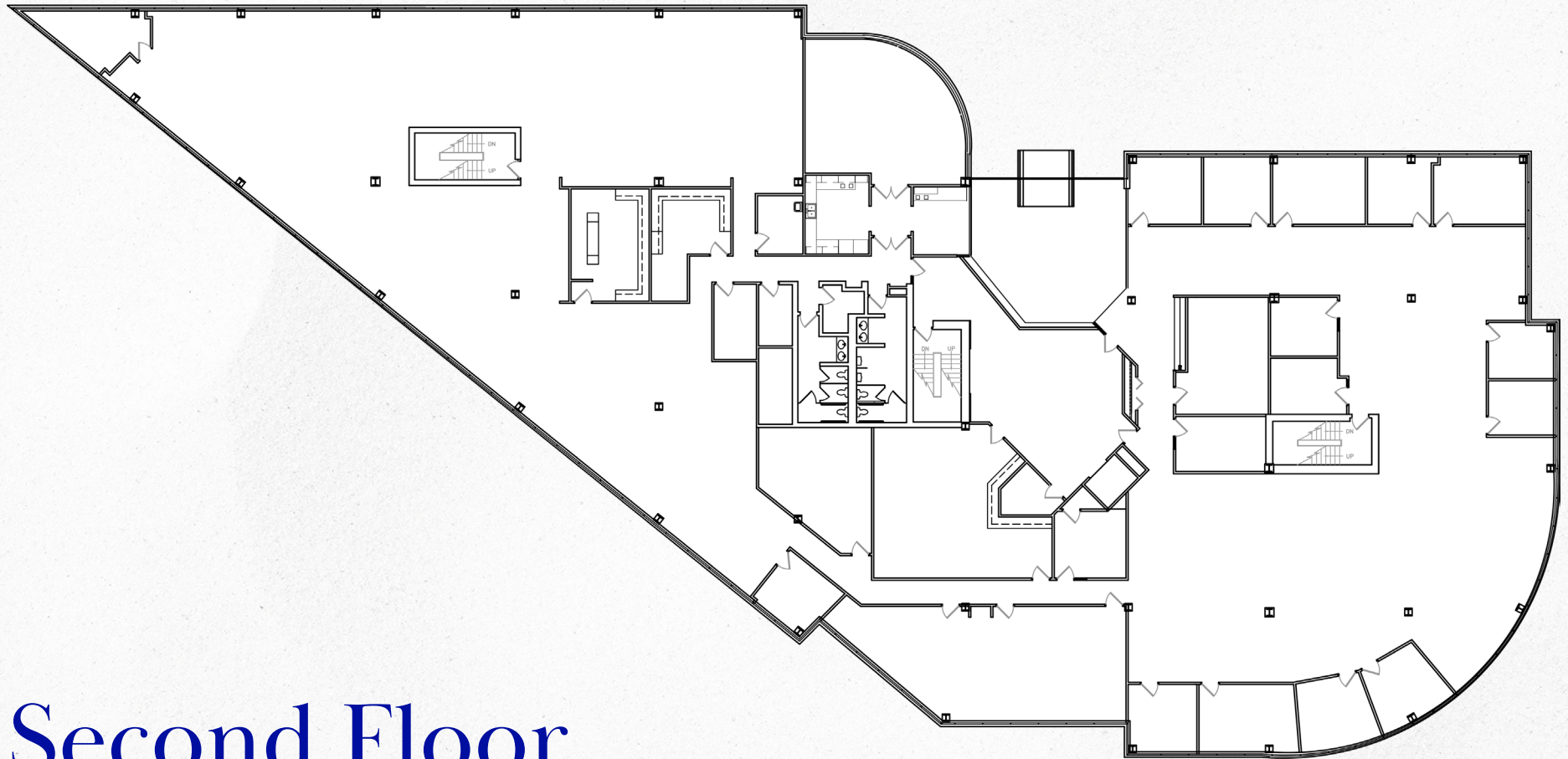


First Floor

20,606 SF

NEWMARK
ZIMMER

11775 BORMAN DRIVE, ST. LOUIS, MO 63146

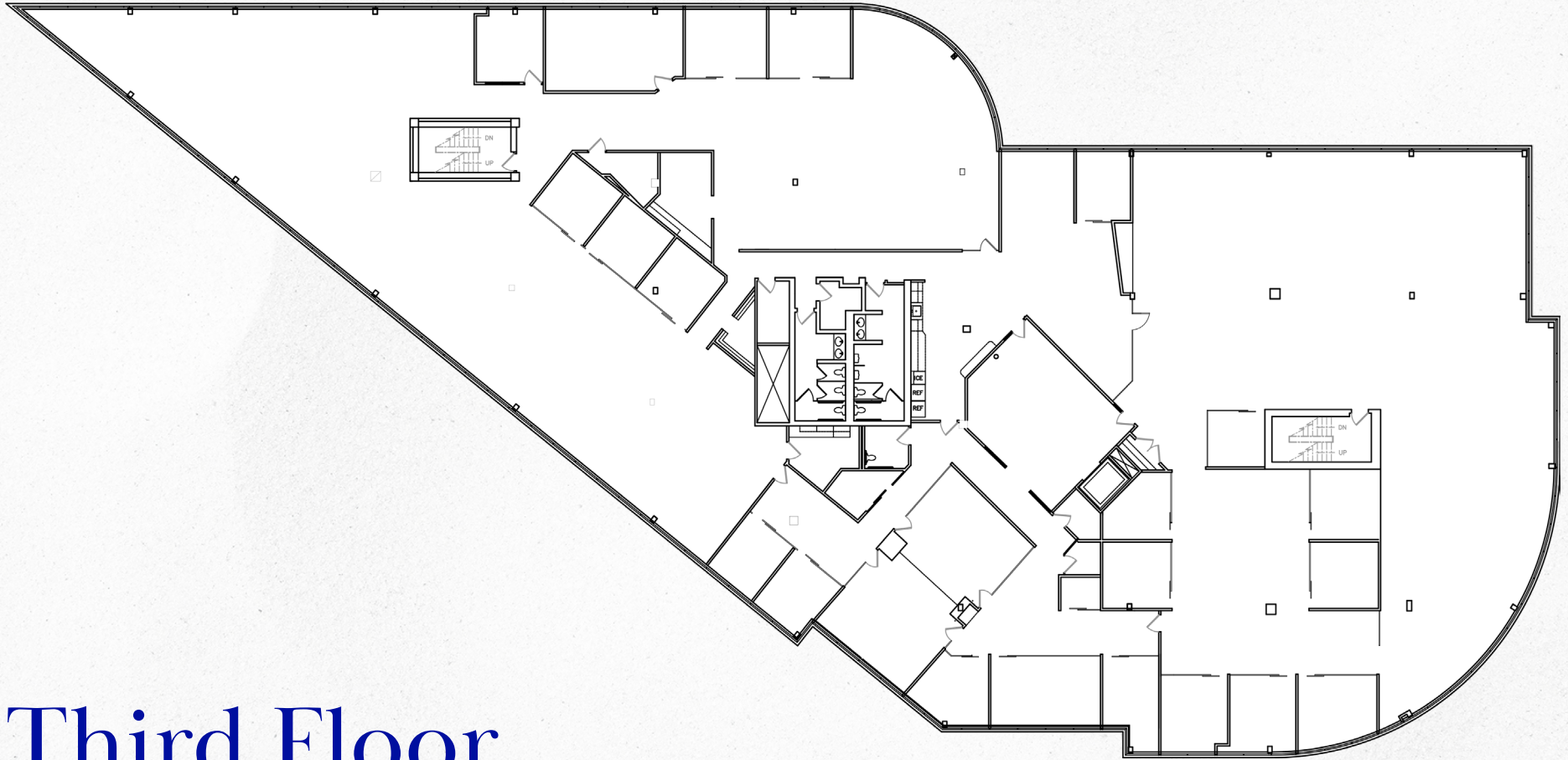


Second Floor

20,606 SF

NEWMARK
ZIMMER

11775 BORMAN DRIVE, ST. LOUIS, MO 63146



Third Floor

20,606 SF

NEWMARK
ZIMMER

11775 BORMAN DRIVE, ST. LOUIS, MO 63146



FOR FURTHER INFORMATION, PLEASE CONTACT:

Kevin McLaughlin, SIOR

Executive Managing Director, Principal

t 314-628-0436

kmclaughlin@ngzimmer.com

Ben Albers

Managing Director - Office Brokerage

t 314-628-0439

balbers@ngzimmer.com

Jay Travis

Associate

t 314-628-0442

jtravis@ngzimmer.com

8235 Forsyth Boulevard, Suite 200
St. Louis, MO 63105

nmrkzimmer.com

NEWMARK
ZIMMER

The information contained herein has been obtained from sources deemed reliable but has not been verified and no guarantee, warranty or representation, either express or implied, is made with respect to such information. Terms of sale or lease and availability are subject to change or withdrawal without notice.