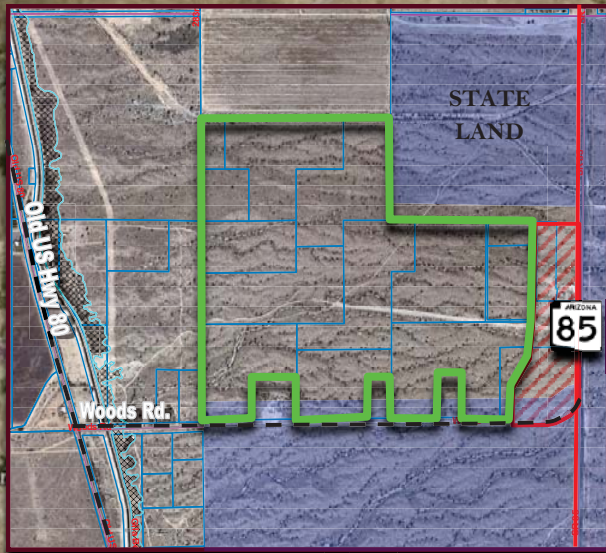


STATE ROUTE 85 & WOODS ROAD

BUCKEYE, ARIZONA



PRICE: \$2,707,500.00

PROPERTY SIZE: 326.5 +/- Acres

ASSESSOR'S PARCEL NUMBERS:
401-70-009K, 401-70-009L, 401-70-009R,
401-70-009S, 401-70-009U, 401-70-009V,
401-70-009Y, 401-70-010, 401-70-011,
401-70-014, 401-70-015, 401-70-017A,
401-70-019, 401-70-020

ZONING: RU-43

UTILITIES:

Phone - CenturyLink

Power - APS

Water - Private, 10 in. commercial well

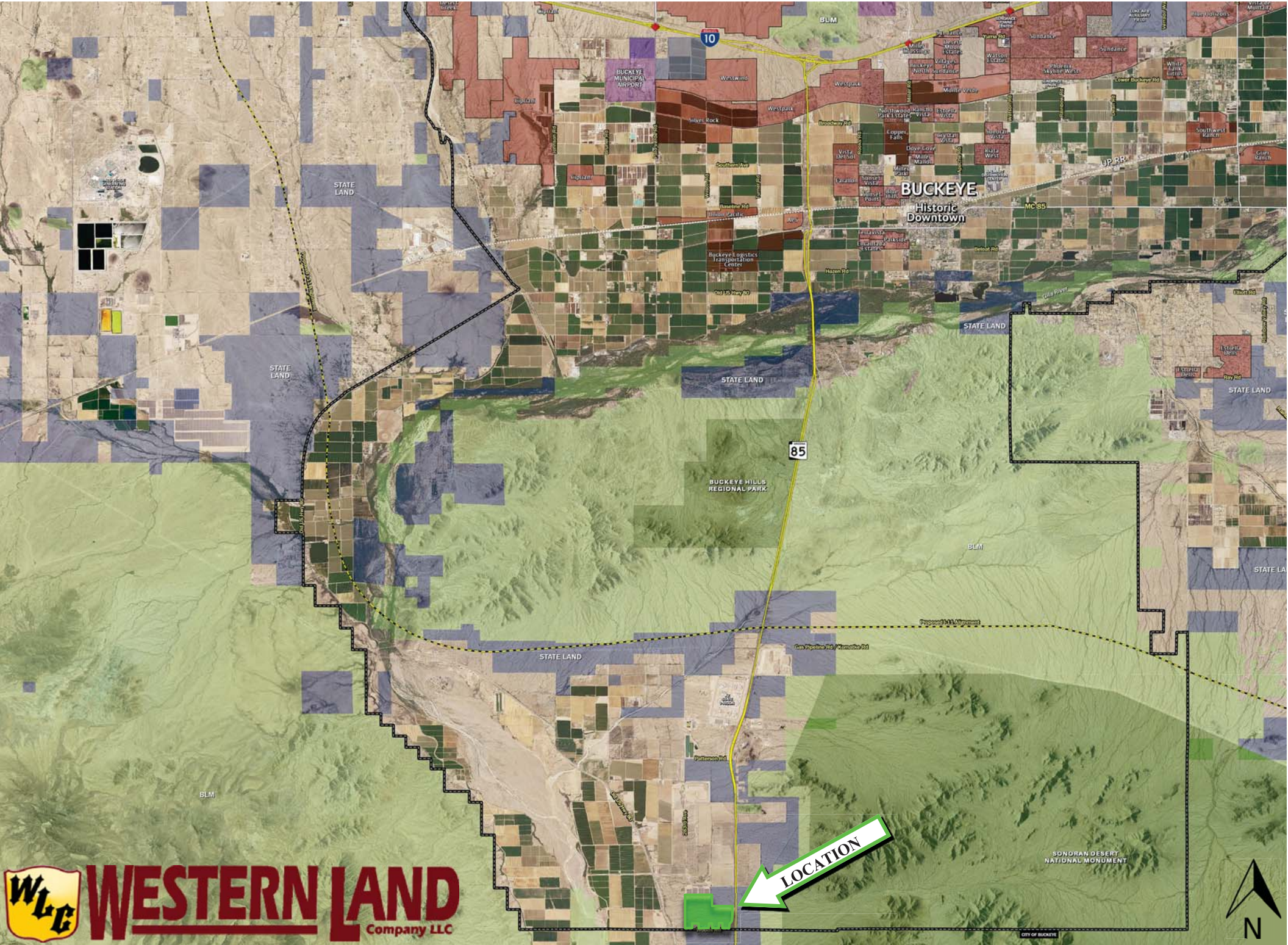
COMMENTS: 326.5 +/- acres on the northwest corner of SR/HWY 85 and Woods Road. 3400 ft. runway! This property is well suited for solar, industrial, commercial and/or residential. Make an offer!



SCOTT TRUITT - DESIGNATED BROKER
2711 EAST INDIAN SCHOOL ROAD SUITE 205
PHOENIX, ARIZONA 85016

OFFICE: 623-977-4900
MOBILE: 602-622-9099
FAX: 888-901-4243

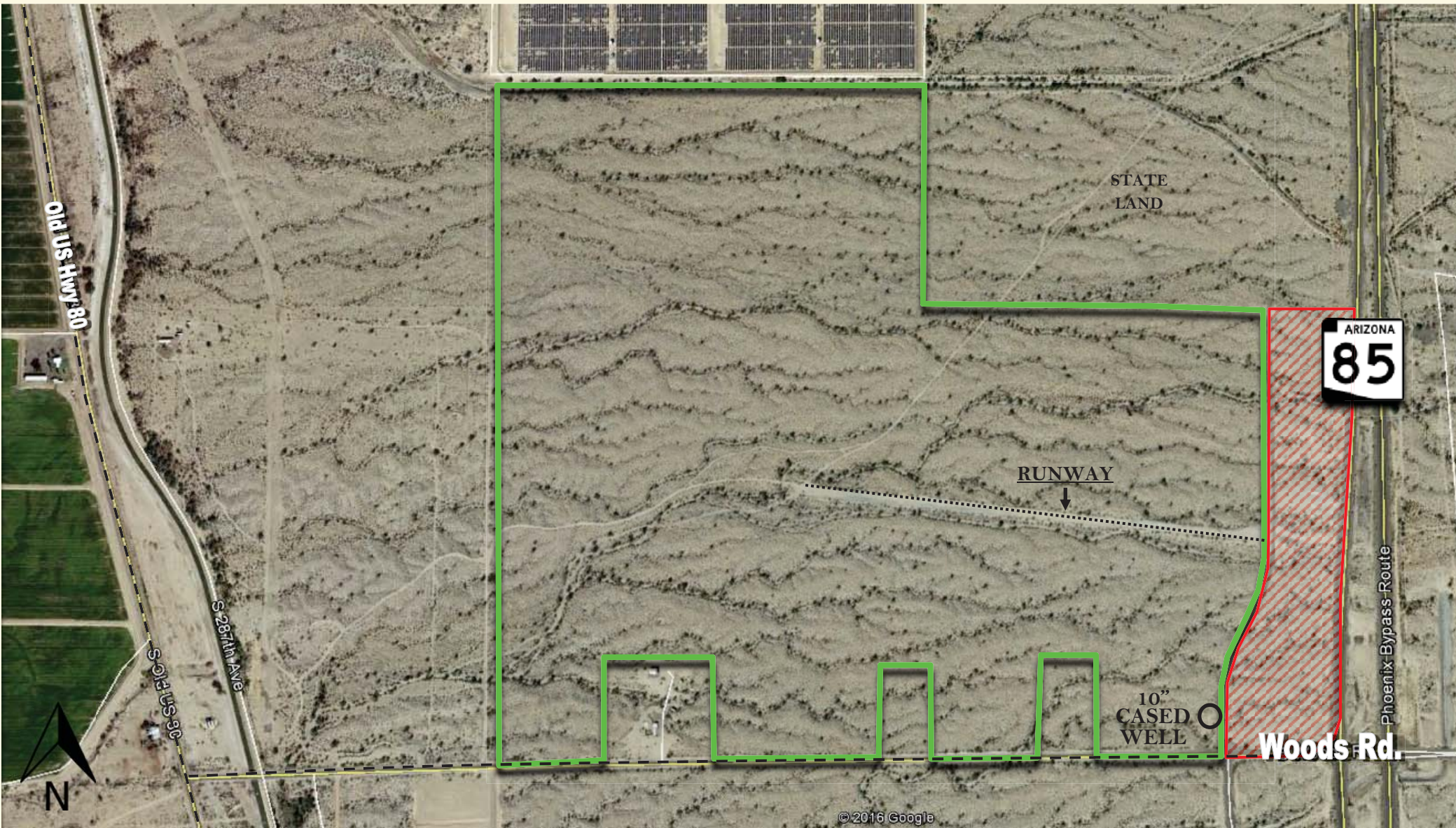
TRUITT@WESTERNLANDCO.NET



Notice: All information contained herein is based upon information and sources deemed to be reliable, however, Western Land Company, LLC., its Owners, Designated Broker, Officers or Assigns, and Sales Associates will not be held responsible for any inaccuracies; further, it is recommended to all parties to satisfy themselves as to the accuracy of all information provided.

STATE ROUTE 85 & WOODS ROAD

BUCKEYE, ARIZONA



SCOTT TRUITT - DESIGNATED BROKER
2711 EAST INDIAN SCHOOL ROAD SUITE 205
PHOENIX, ARIZONA 85016

OFFICE: 623-977-4900
MOBILE: 602-622-9099
FAX: 888-901-4243

TRUITT@WESTERNLANDCO.NET