

**1336 Oak Ave. Suite D, St. Helena, CA 94574**  
**1800 SF Office, Great Location One Block Off Main St.**



**Suite D 1800 SF +/- NNN Lease 3 Years Minimum — Available Now**

### FEATURES

- 2 entry doors in the front of the space
- Kitchen
- 3 Offices, one with a corner view, two windows
- Executive office
- Conference Room
- Reception
- Large Meeting or Conference room or open offices
- 2 Restrooms
- 6 Parking spots and good street parking



**AVAILABLE FOR LEASE**



**Thomas Kern**  
**(707) 302-4466**  
**tkern@cnapavalley.com**

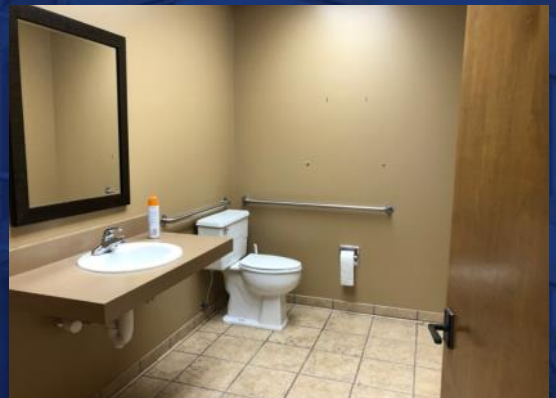
**Jeff Feeney**  
**(707) 580-5678**  
**jfeeney@cnapavalley.com**  
**Lic.#01329335**



**1040 MAIN ST. #101**  
**NAPA, CA 94559**  
**(707) 224-8454**

**NAPACOMMERCIALPROPERTIES.COM**

# PHOTO GALLERY



Thomas Kern  
(707) 302-4466  
tkern@cnapavalley.com

Jeff Feeney  
(707) 580-5678  
jfeeney@cnapavalley.com  
Lic.#01329335

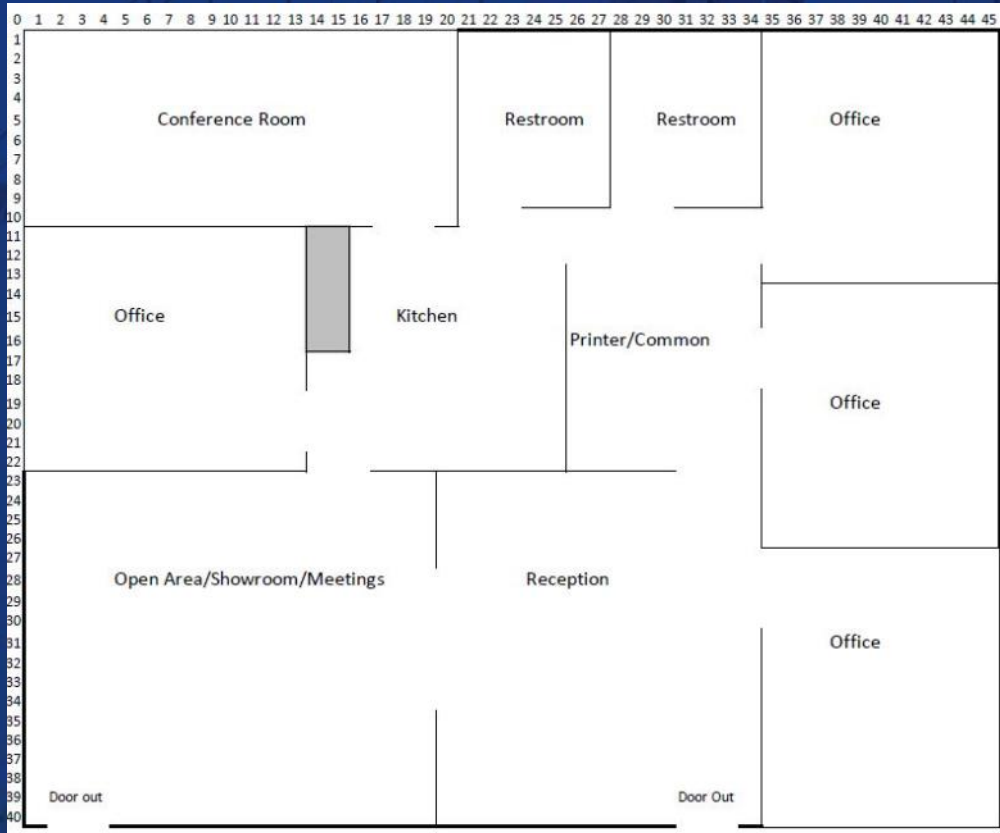
 **COLDWELL  
BANKER  
COMMERCIAL**  
BROKERS OF THE VALLEY

1040 MAIN ST. #101  
NAPA, CA 94559  
(707) 224-8454

NAPACOMMERCIALPROPERTIES.COM



# FLOOR PLAN



**Thomas Kern**  
 (707) 302-4466  
 tkern@cnapavalley.com

**Jeff Feeney**  
 (707) 580-5678  
 jfeeney@cnapavalley.com  
 Lic.#01329335



1040 MAIN ST. #101  
 NAPA, CA 94559  
 (707) 224-8454

NAPACOMMERCIALPROPERTIES.COM