



For Sale or Lease

Office space available

- 33,253 total s.f.
- Located on the Kentucky Horse Park premises
- Convenient access to Interstate-75
- Sale price: \$2,995,000
- Lease rate: Negotiable
- For more information about the building and USA Equestrian Trust, visit trusthorses.org.

**4047 Iron Works Parkway
Lexington, KY 40511**

Tom Fairhurst
+1 513 297 2511
tom.fairhurst@am.jll.com

Josh Gerth
+1 513 252 2178
josh.gerth@am.jll.com

jll.com/cincinnati

DISCLAIMER

©2018 Jones Lang LaSalle IP, Inc. All rights reserved. All information contained herein is from sources deemed reliable; however, no representation or warranty is made to the accuracy thereof.





Location

4047 Iron Works Parkway is conveniently located north of Lexington, Kentucky with direct access to Interstate 75.

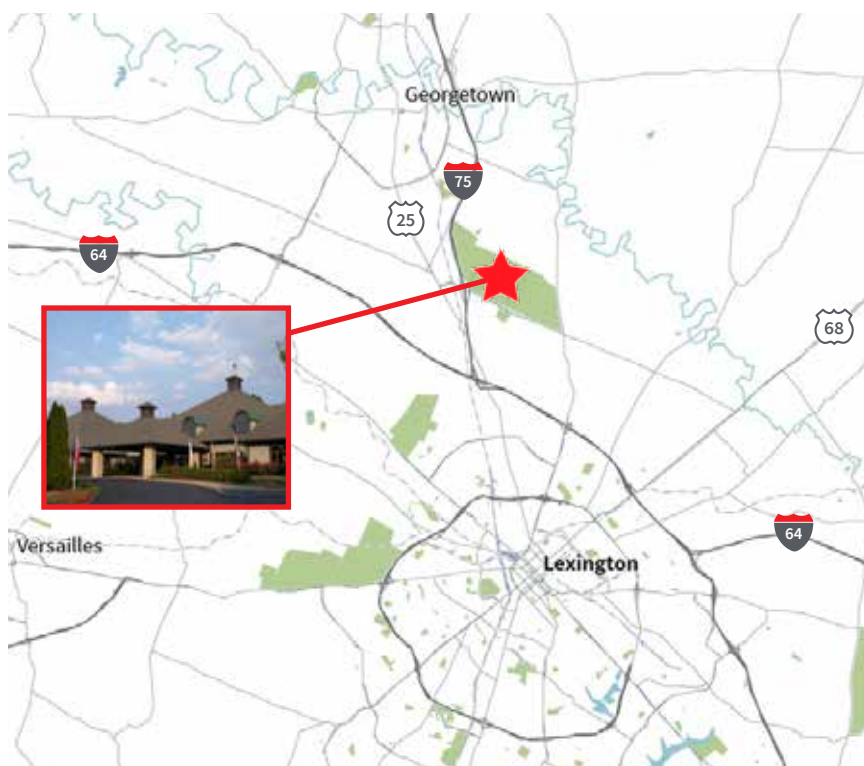


Kentucky Horse Park

4047 Iron Works Parkway is located on the park premises, with immediate access to the on-site facilities.

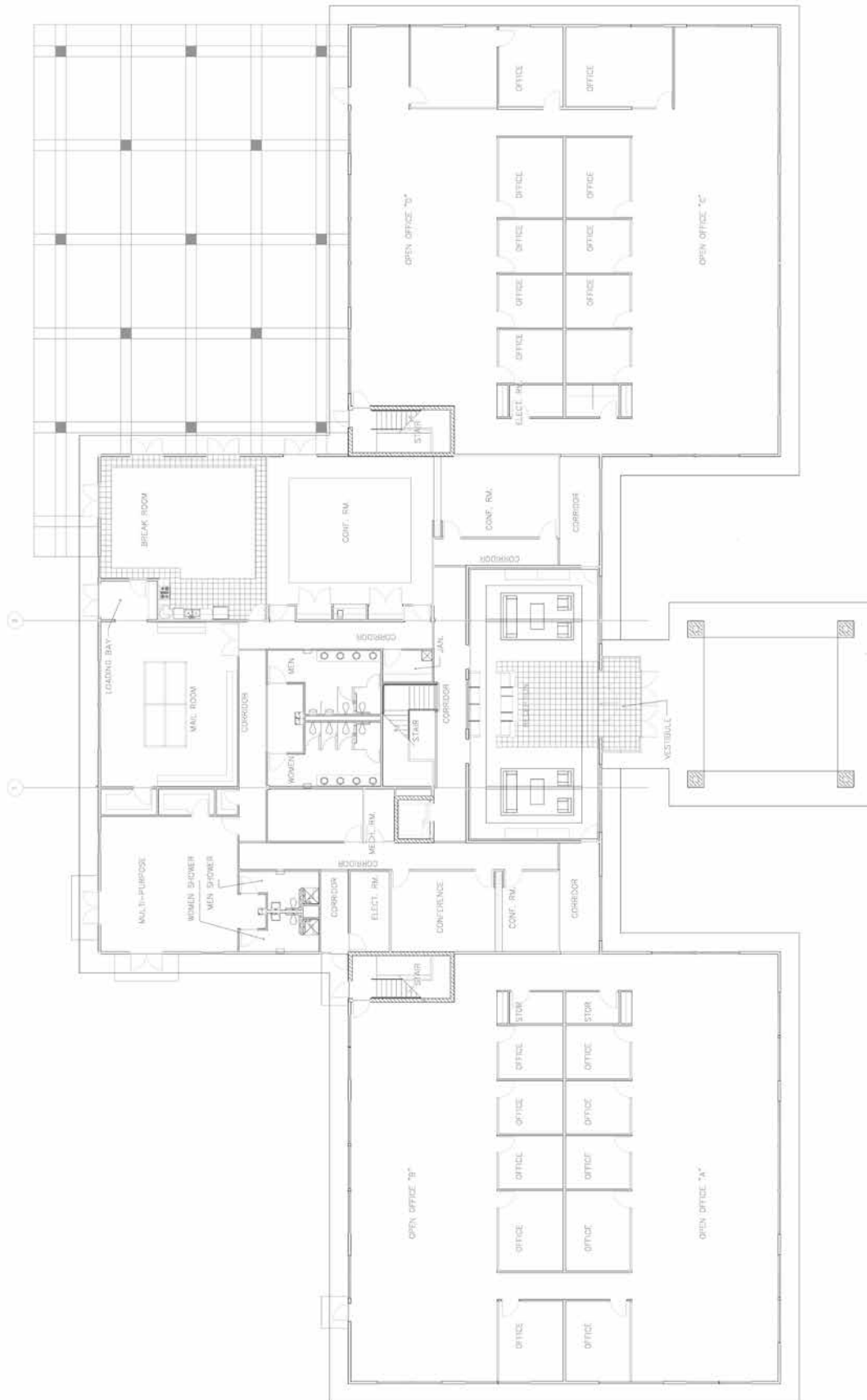
Kentucky Horse Park is the premier event venue for equestrians. The 1,200+ acre site provides space for tourist attractions, competition facilities, a 260-site resort campground and offices for more than 30 organizations and associations.

The park is home to an extensive selection of events including horse shows, rodeos, festivals, museum exhibits and shopping. Kentucky Horse Park also offers space available for rent for conferences, trade shows, reunions and more.



Floorplan

Main level



Floorplan

Second level

