

# 662 CLAY

+/-1,025 SF

FIDI | SAN FRANCISCO

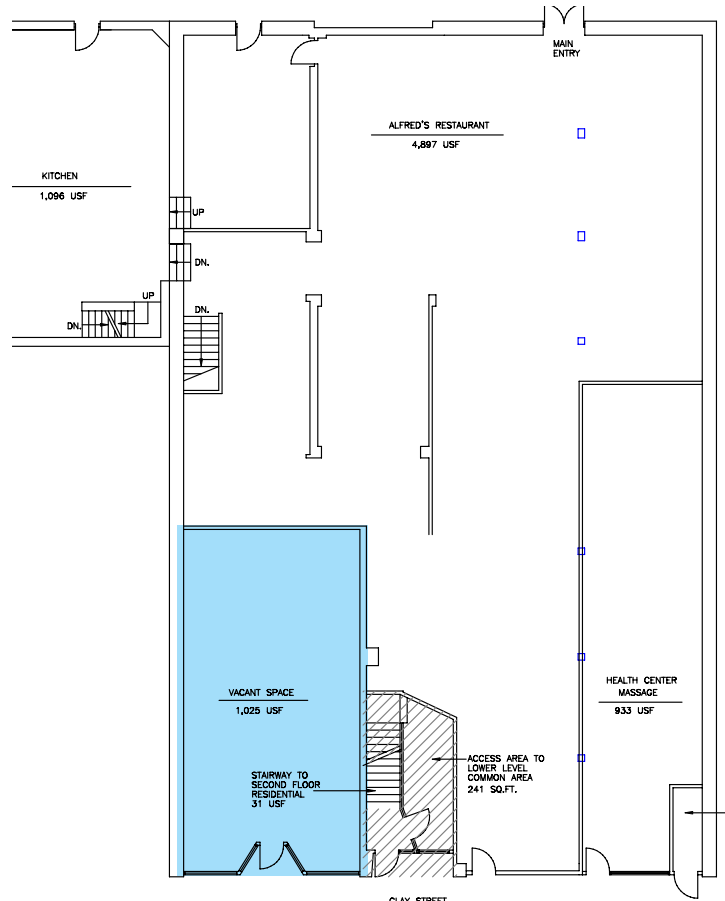


maven  
RETAIL

**ABOUT THE SPACE**

662 Clay is situated at a choice intersection near the Financial District, Jackson Square, and Chinatown, by the foot of the famed Transamerica Pyramid. Ownership is seeking to renovate and modernize the building, replacing the storefront and creating a unique retail location for the urban professionals living and working in the surrounding neighborhoods.

- 1,025 SF
- Petite retail space
- New storefront will be provided
- Potential storage on lower level





# NEIGHBORHOOD



# 662 CLAY

+ / - 1,025 SF

FIDI | SAN FRANCISCO

**maven**  
RETAIL • OFFICE • INDUSTRIAL

**SARAH BRETT SCHWARTZ**  
office 415.404.6959  
sarah@mavenproperties.com  
BRE #01903152

**PAM MENDELSON**  
office 415.404.6650  
pam@mavenproperties.com  
BRE #00953050

**ROSA LEE**  
office 415.404.7340  
rosa@mavenproperties.com  
BRE #02057293

NOTICE: This information has been secured from sources we believe to be reliable but we make no representations, warranties, express or implied, as to the accuracy of the information. Listing broker has been given enough information to provide only a preliminary interest in the property. The materials are not to be considered fact. The information contained herein is not a substitute for thorough due diligence investigation. References to square footage, zoning, use, or age are approximate. Please contact the San Francisco Planning Department to verify zoning at (415) 558-6378, as neither broker or landlord represent that this space is suitable for your use. Tenant or Buyer must verify the information at their own expense and bears all the risk for any inaccuracies. By receiving these materials you are agreeing to the disclaimers set forth herein. BRE#01878802

466 Green Street Suite #203 | San Francisco, CA 94133 | 415.781.7700