



Property Features

- **LAND FOR SALE OR BUILD-TO-SUIT**
- Office/Medical office users
- Zoned O-2
- Excellent visibility to Chippenham Parkway
- Excellent access
- Convenient to Midlothian Turnpike
- Corner site @ Boulders Parkway at Beaufont Springs Drive

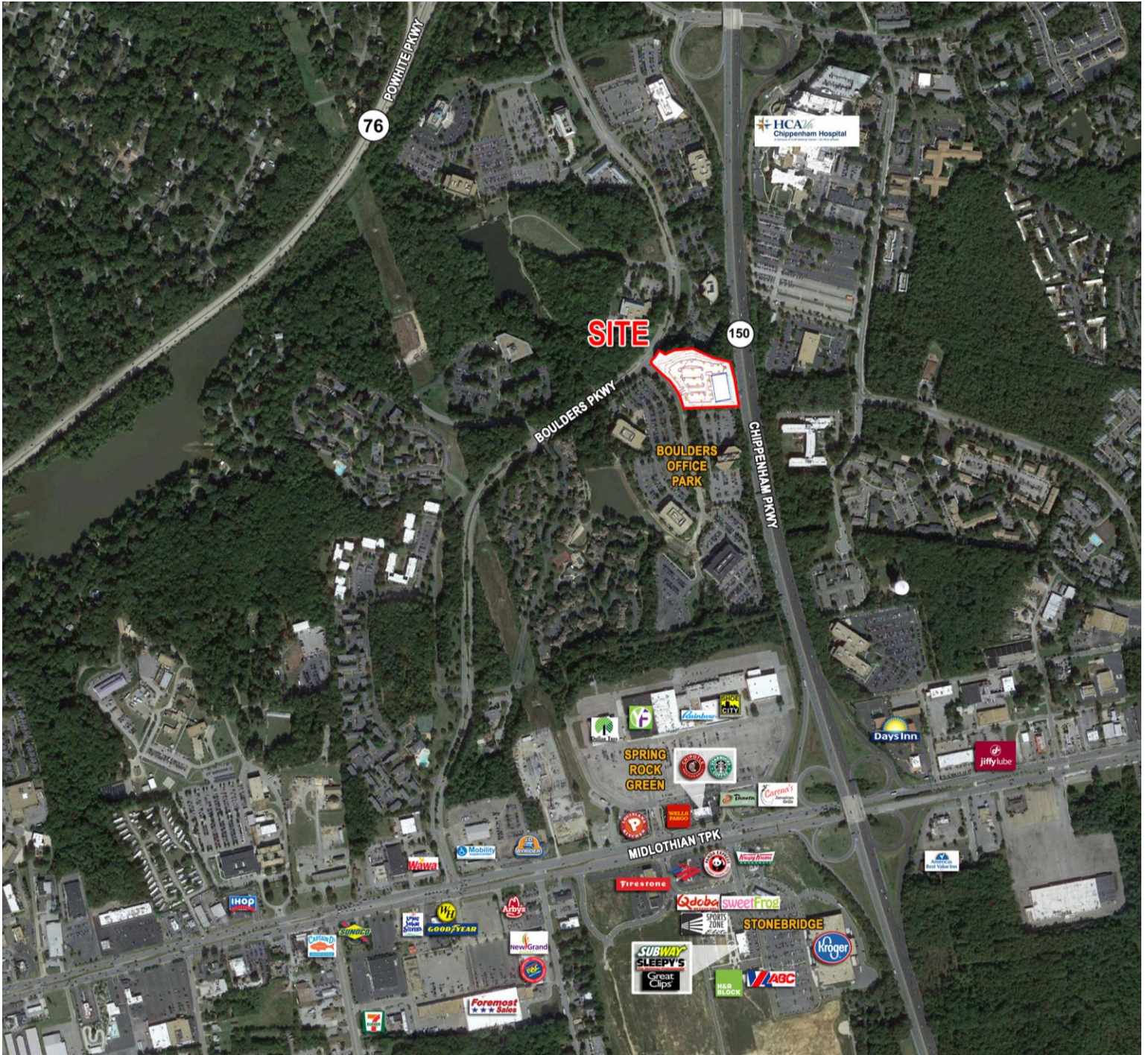
Specifications

Total Size	38,000 SF+ (Potential GLA)
Land Size	3.73 acres

For more information, contact:

DAVID SMITH, CCIM
 Senior Vice President
 804 697 3466
 david.smith@thalhimer.com

Thalhimer Center
 11100 W. Broad Street
 Glen Allen, VA 23060
 www.thalhimer.com



For more information, contact:

DAVID SMITH, CCIM
Senior Vice President
804 697 3466
david.smith@thalhimer.com

Thalhimer Center
11100 W. Broad Street
Glen Allen, VA 23060
www.thalhimer.com

Independently Owned and Operated / A Member of the Cushman & Wakefield Alliance

Cushman & Wakefield | Thalhimer © 2015. No warranty or representation, express or implied, is made to the accuracy or completeness of the information contained herein, and same is submitted subject to errors, omissions, change of price, rental or other conditions, withdrawal without notice, and to any special listing conditions imposed by the property owner(s). As applicable, we make no representation as to the condition of the property (or properties) in question.