



SKOGEN 106

Industrial Building A

Brand New Building | Hwy 106 + I-29



Venture Street
Tea, SD 57064



size

6,120 sqft



price

\$5.75 per sqft (NNN)



location

Building is located in the Bakker Landing development at Highway 106 and Interstate 29.



layout

- 102' x 60' overall area
- 13' x 13' office
- Restroom
- Space can be subdivided; Contact Broker.



details:

- 102' x 60' overall space dimensions
- 20' sidewalls
- Two 12' x 14' overhead doors
- One 14' x 14' overhead door
- One 9' dock door
- 3-phase electrical
- Forced-air heat

Information deemed reliable but not guaranteed.

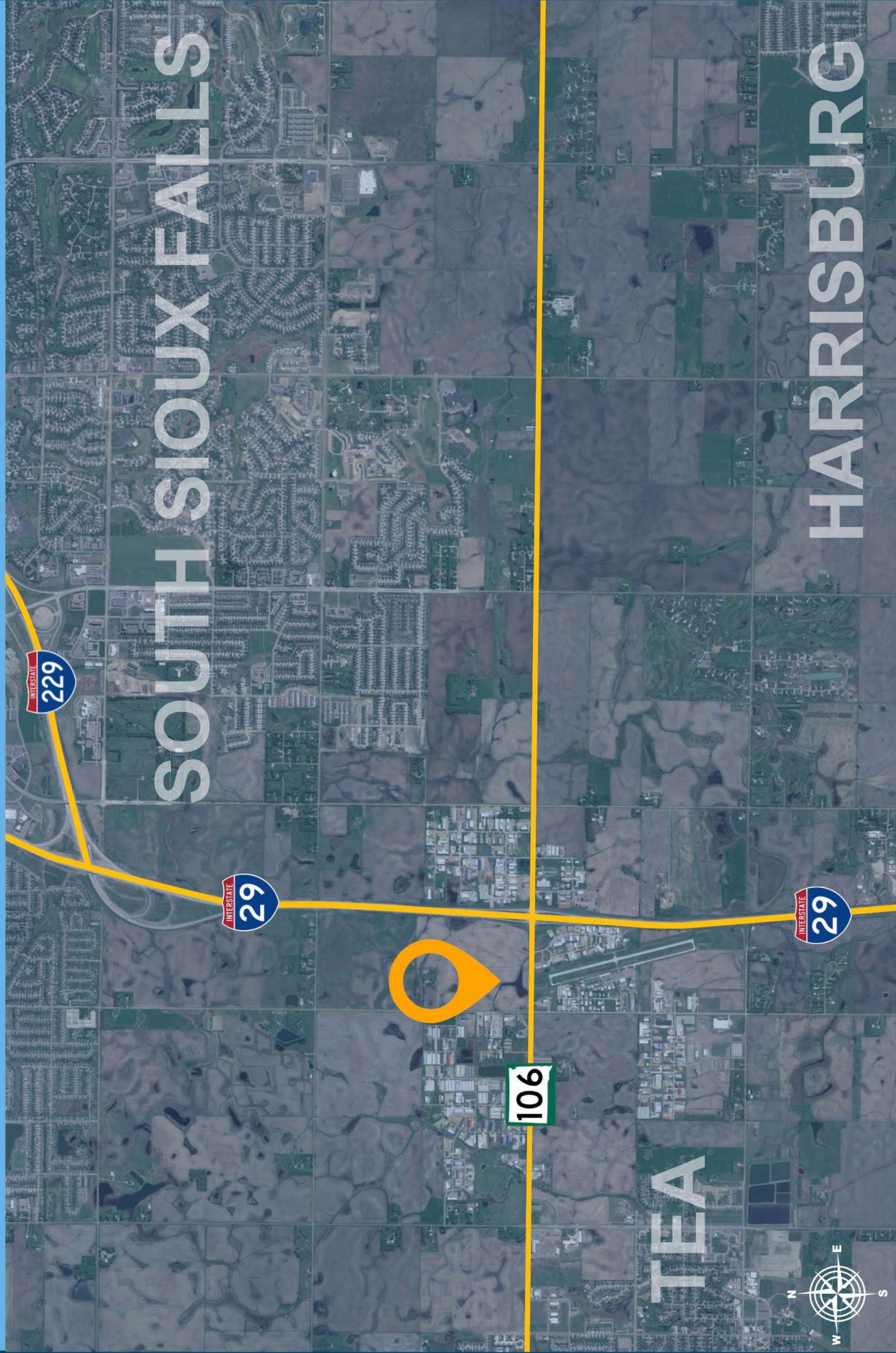


Lake Lorraine | 2571 S. Westlake Drive #100
Sioux Falls, South Dakota 57106
VBCLink.com | 605.361.8211



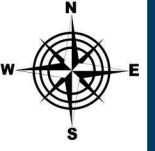
605.376.0127
Ryan@VBCLink.com

LOCATION MAP

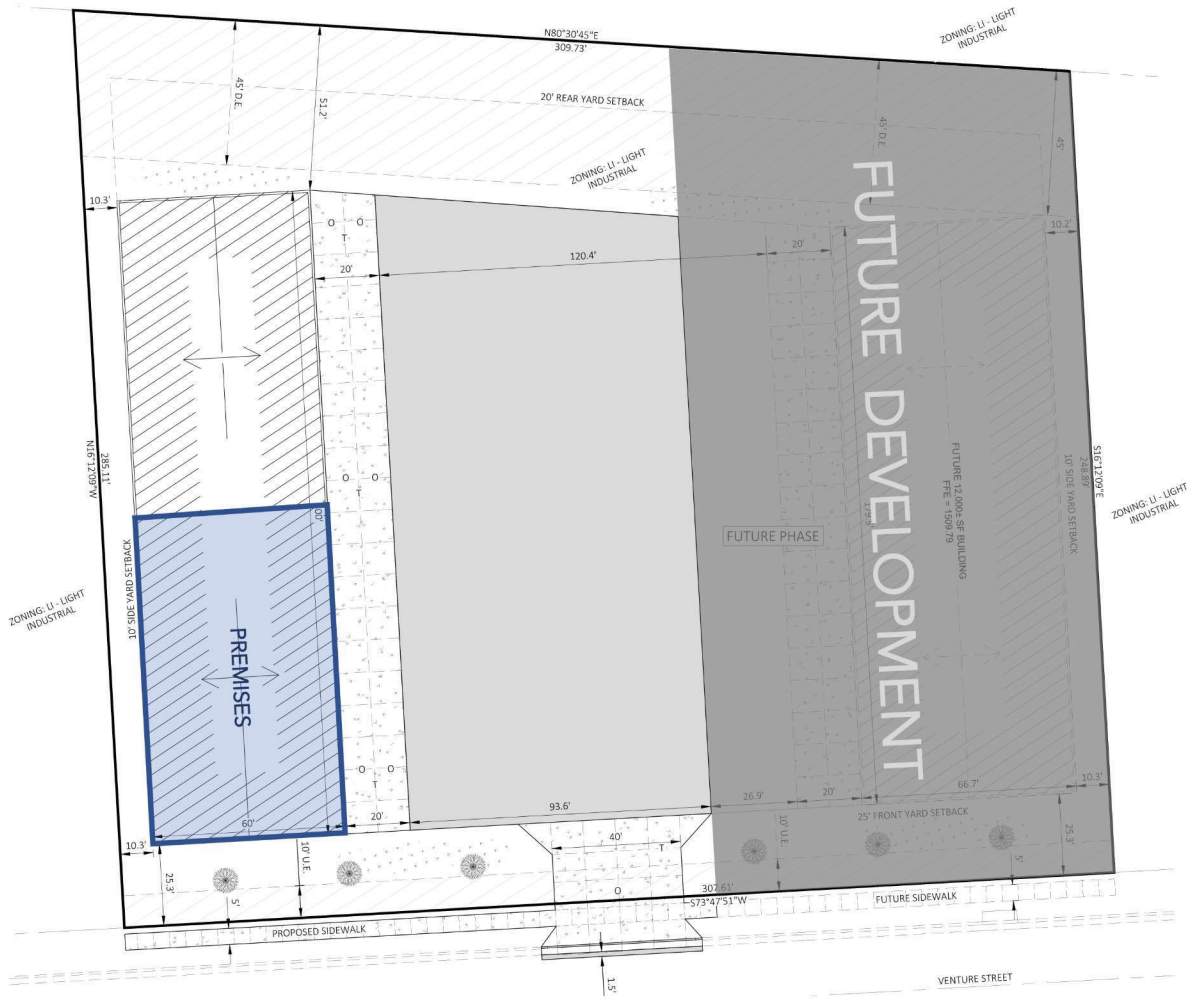


AREA MAP





SITE PLAN



FLOOR PLAN

