

FOR LEASE

36,400 SF Available
8615 North Loop



FOR LEASE

36,400 SF Available
8615 North Loop

Downtown



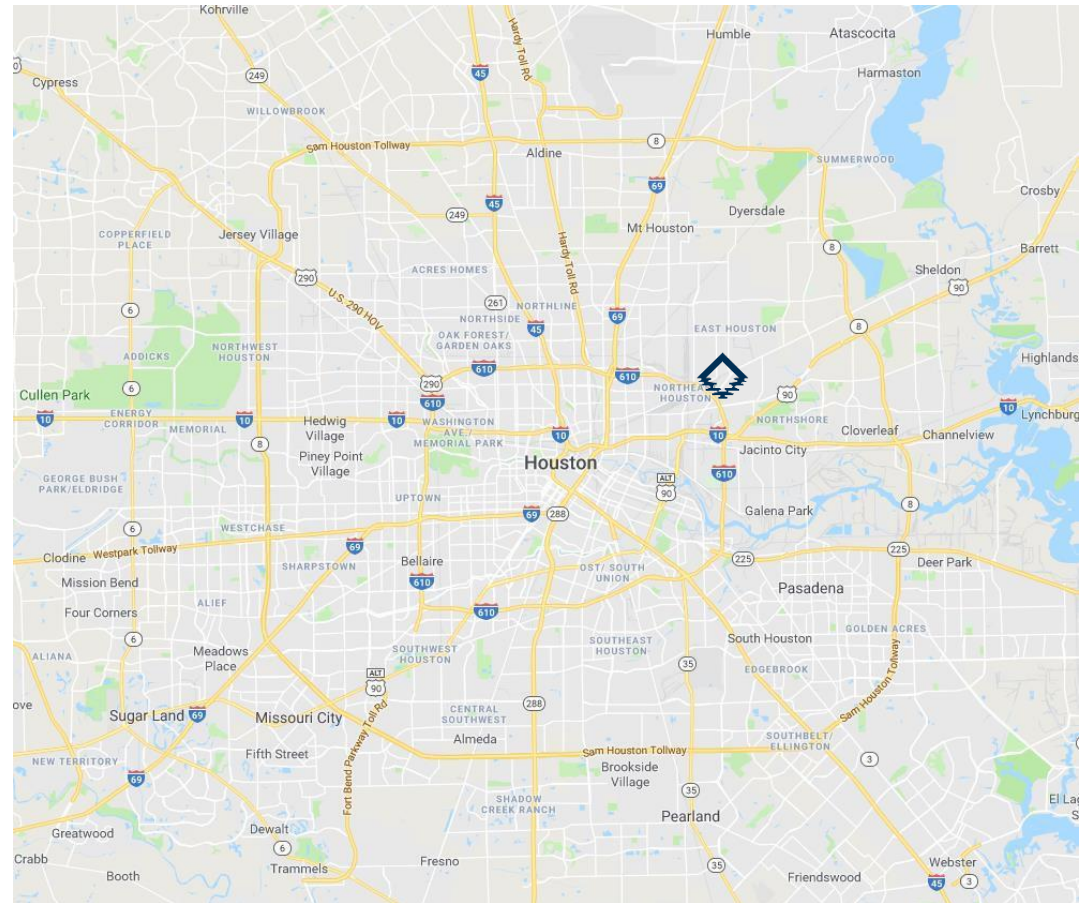
FOR LEASE

36,400 SF Available
8615 North Loop

PROPERTY HIGHLIGHTS

36,400 SF

- 36,400 SF Total Building Area
- 2,800 SF Office Space
- Single Tenant Building
- Great accessibility to 610 and I-10
- 100% Fire Sprinkled
- 24' Clear Height
- LED Lights
- 5 Dock High Front Loading Doors
- 1 Warehouse Ramp
- New Roof



**CUSHMAN &
WAKEFIELD**

Jason Dillee
jason.dillee@cushwake.com
Direct: 713-345-1432
Mobile: 832-741-0733

Andrew Jewett
andrew.jewett@cushwake.com
Direct: 713-345-1433
Mobile: 832-310-4772

Owned and Managed by:



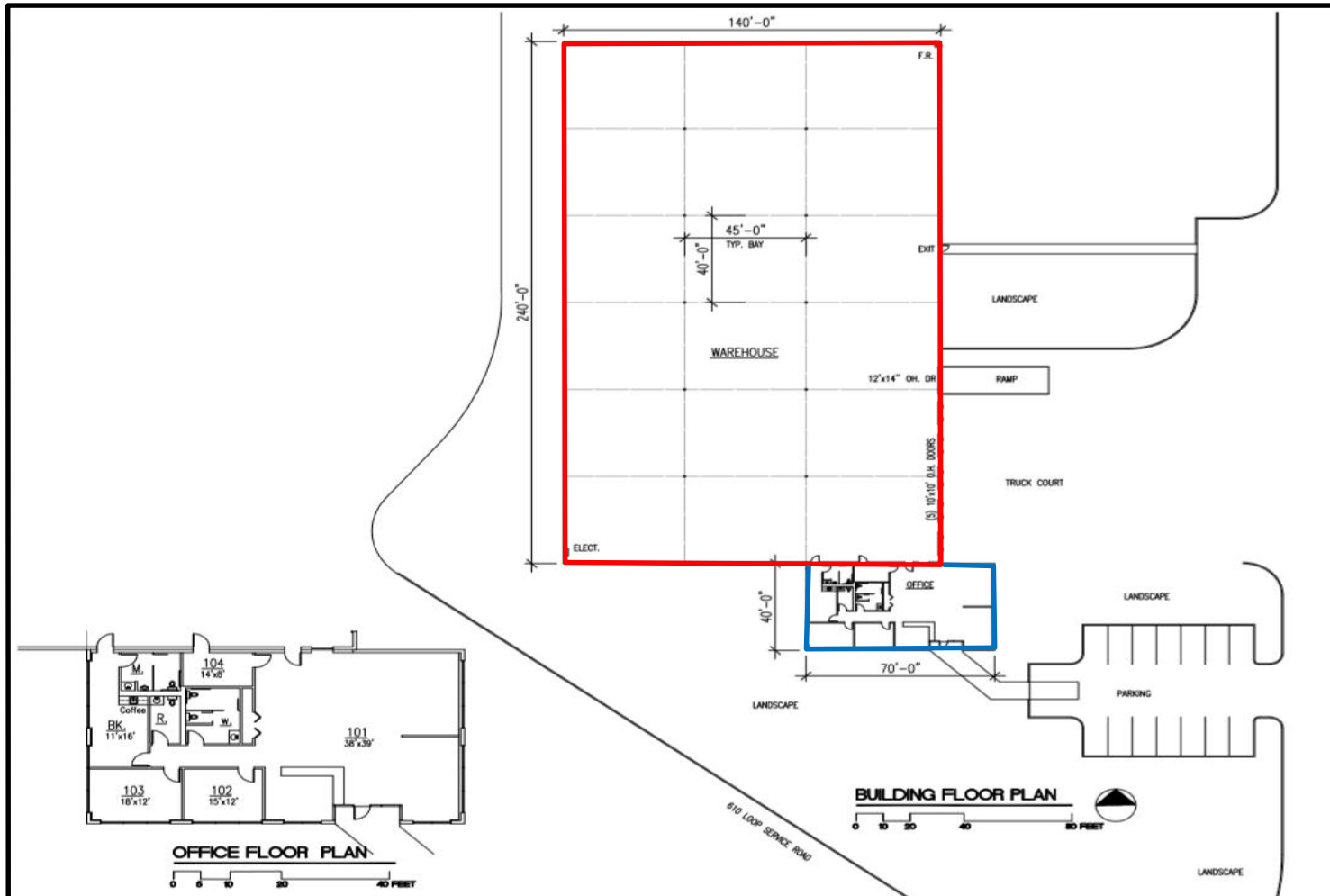
Stonelake
CAPITAL PARTNERS

FOR LEASE

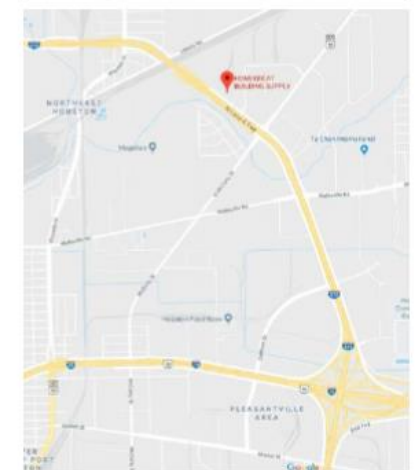
36,400 SF Available
8615 North Loop

SITE PLAN

36,400 SF



8615 NORTH LOOP EAST
HOUSTON, TEXAS 77029



LOCATION MAP
N.T.S.

BUILDING SUMMARY

OFFICE AREA :	2,800 SQ. FT. (7.7%)
WAREHOUSE :	33,600 SQ. FT. (92.3%)
TOTAL BUILDING AREA:	36,400 SQ. FT.

BUILDING FEATURES

- CONCRETE TILT UP / STEEL STRUCTURE BUILDING
- DOCK HIGH FRONT LOADING DOORS
- 100% FIRE SPRINKLED
- 24' CLEAR HEIGHT
- EASY ACCESS 610 LOOP and I-10



Jason Dillee
jason.dillee@cushwake.com
Direct: 713-345-1432
Mobile: 832-741-0733

Andrew Jewett
andrew.jewett@cushwake.com
Direct: 713-345-1433
Mobile: 832-310-4772

Owned and Managed by:



FOR LEASE

36,400 SF Available
8615 North Loop

