

# 111 S. JACKSON

BRODERICK  
GROUP

PLUG  
&  
PLAY

ENTIRE  
BUILDING  
SUBLEASE



70,599 RSF SUBLEASE AVAILABLE  
IMMEDIATELY THROUGH JANUARY 31, 2026

111 S JACKSON STREET | SEATTLE, WASHINGTON

# 111 S. JACKSON

## THE OPPORTUNITY



[▶ CLICK TO VIEW VIRTUAL TOUR OF MEETING SPACE & DECK](#)

# AVAILABLE SPACE

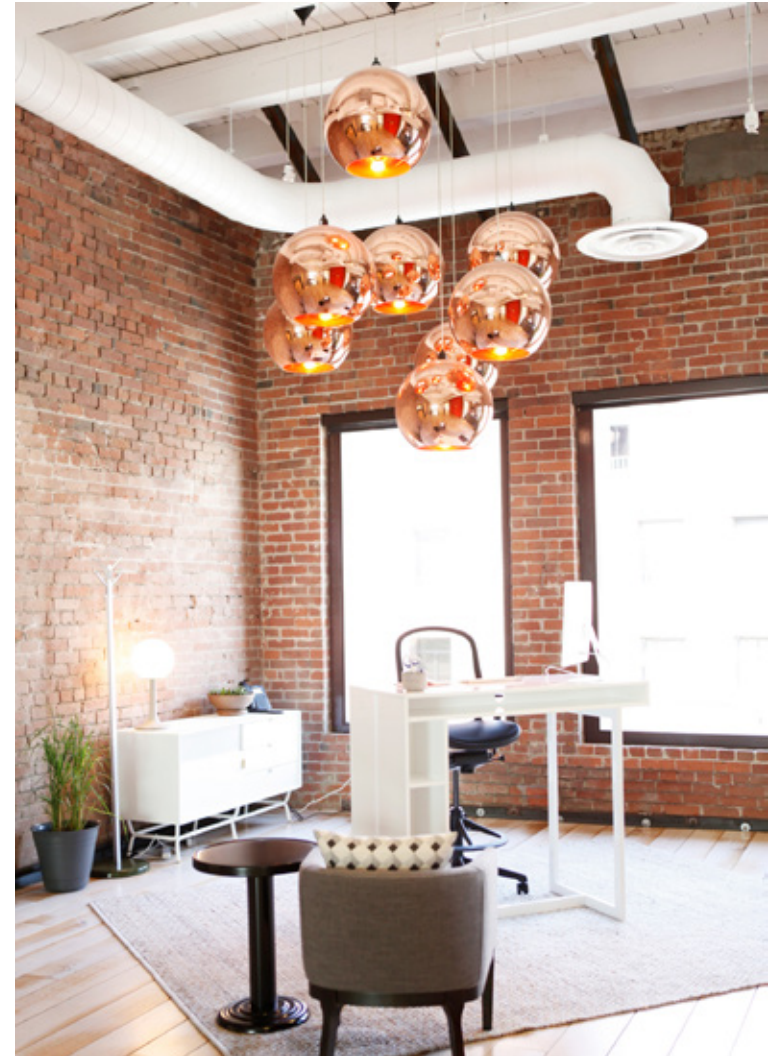
LOWER LEVEL	12,087	4TH FLOOR	12,890
1ST FLOOR	5,350	5TH FLOOR	13,014
2ND FLOOR	12,754	ROOF	1,742
3RD FLOOR	12,762		

# 111 S. JACKSON

## BUILDING HIGHLIGHTS



SIGNAGE OPPORTUNITY AT BUILDING ENTRANCE



FURNITURE AVAILABLE

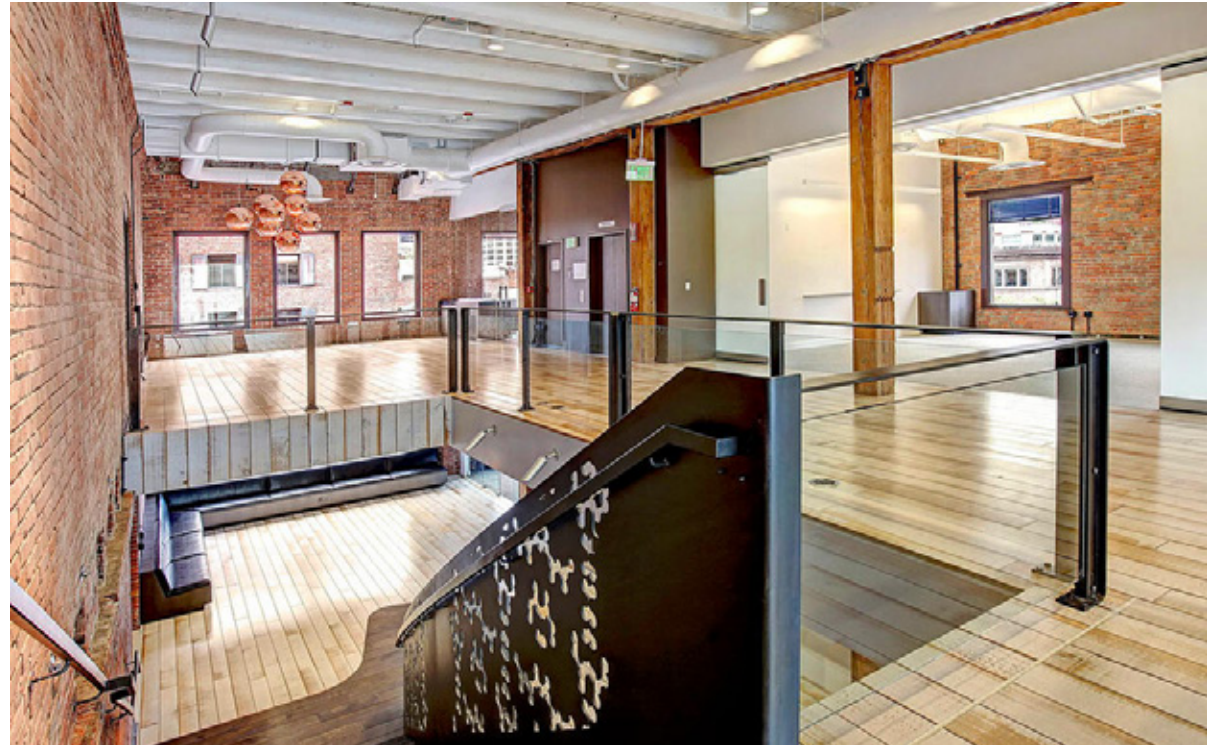


# 111 S. JACKSON

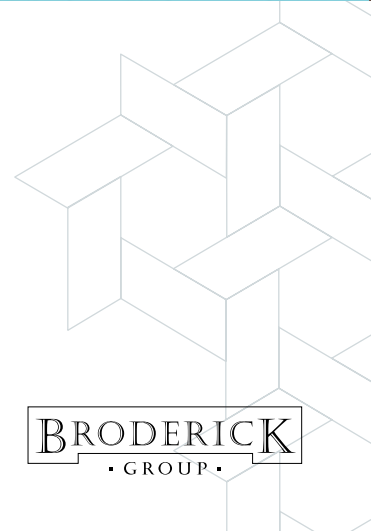
## BUILDING HIGHLIGHTS



CREATIVE BRICK & BEAM CONSTRUCTION

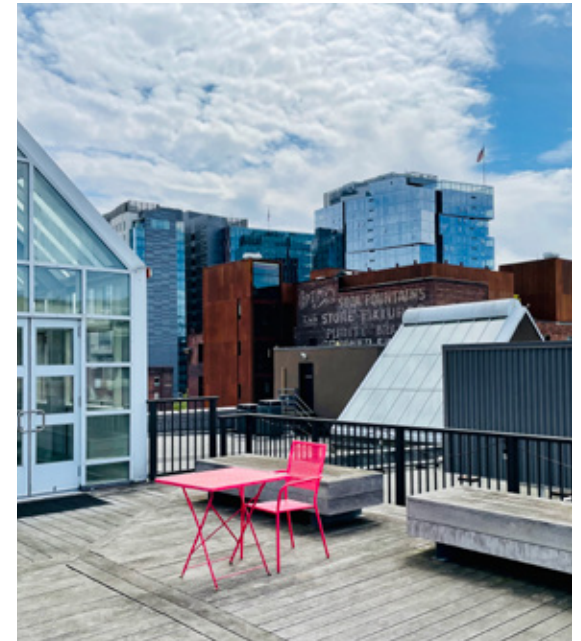


ALL FLOORS ARE CONNECTED BY INTERNAL STAIRWELL



# 111 S. JACKSON

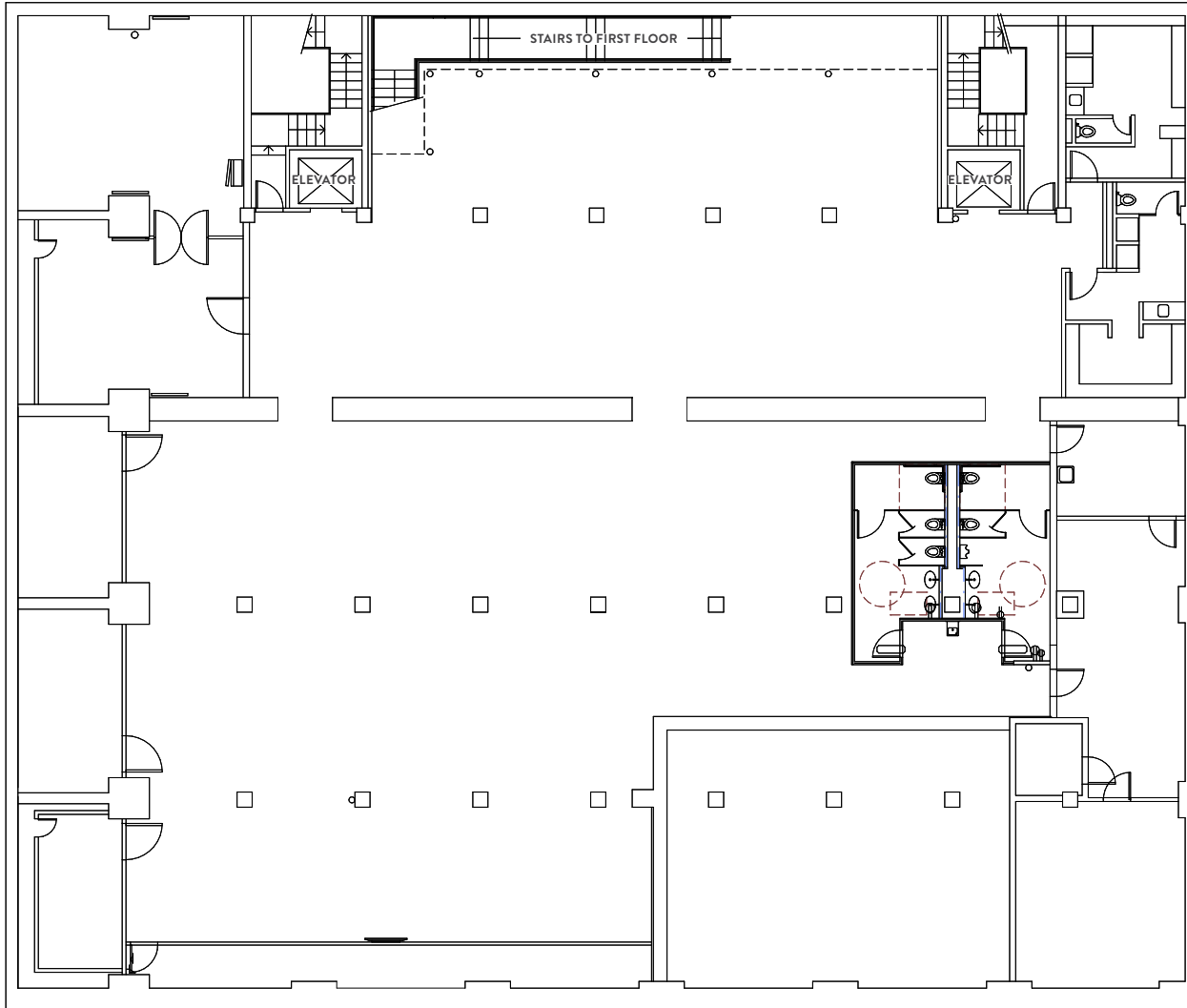
## ROOFTOP EVENT SPACE & DECK



PRIVATE ROOFTOP DECK SPACE WITH VIEWS OF DOWNTOWN SEATTLE,  
T-MOBILE PARK, LUMEN FIELD, AND THE SEATTLE WATERFRONT

# 111 S. JACKSON

## FLOOR PLAN



# LOWER LEVEL

12,087 RSF

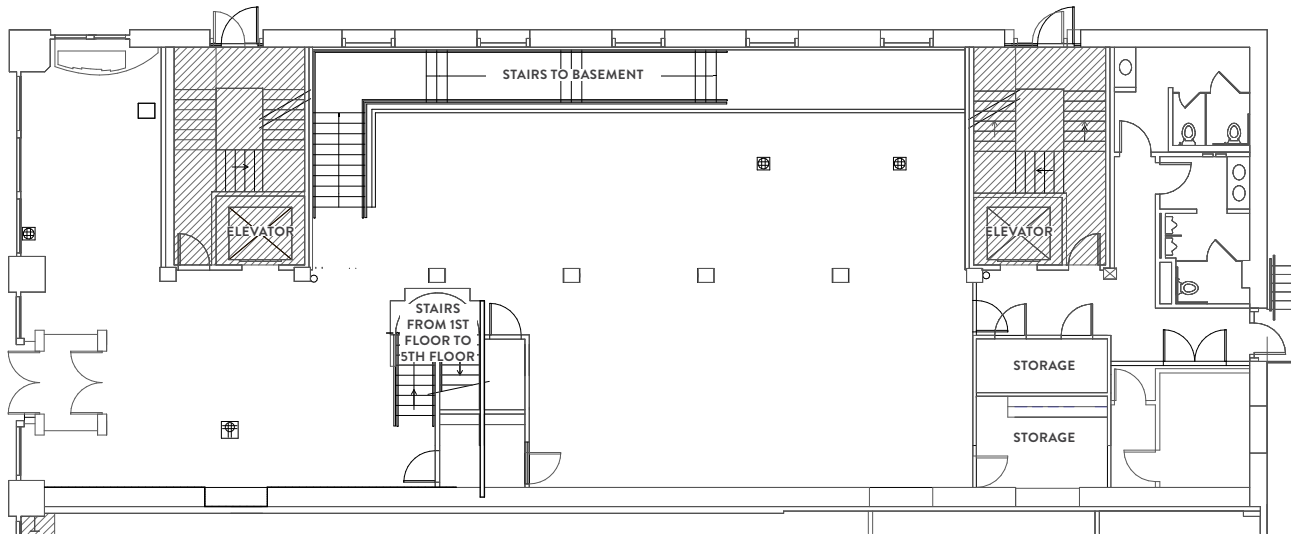
CREATIVE MULTI-FUNCTION SPACE  
EXPOSED CONCRETE FLOORING  
COMMUNAL SPACE OR AREA FOR  
WORKSTATIONS



# 111 S. JACKSON

## FLOOR PLAN

# 1ST FLOOR



5,350 RSF

WELCOMING ENTRANCE

OPEN FLOOR PLAN

VAULTED OPEN PLENUM CEILINGS

CEILING HEIGHT: 14'6"



[CLICK TO VIEW VIRTUAL TOUR](#)



# 111 S. JACKSON

## FLOOR PLAN

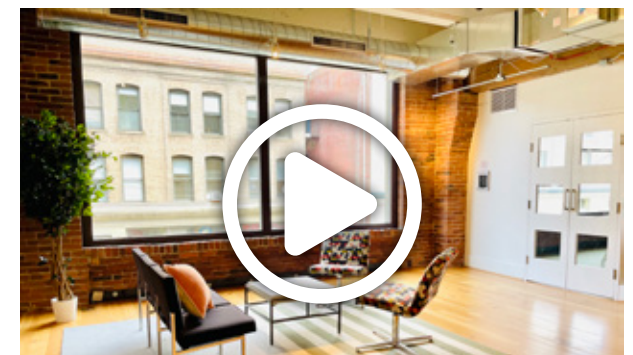
# 2ND FLOOR

12,754 RSF

MIXTURE OF PRIVATE OFFICES, TEAM ROOMS AND CONFERENCE ROOMS  
CEILING HEIGHT: 11'6"



\*FURNITURE SHOWN IN SPACE PLAN IS AVAILABLE



[CLICK TO VIEW VIRTUAL TOUR](#)





# 111 S. JACKSON

## FLOOR PLAN

# 3RD FLOOR

12,762 RSF

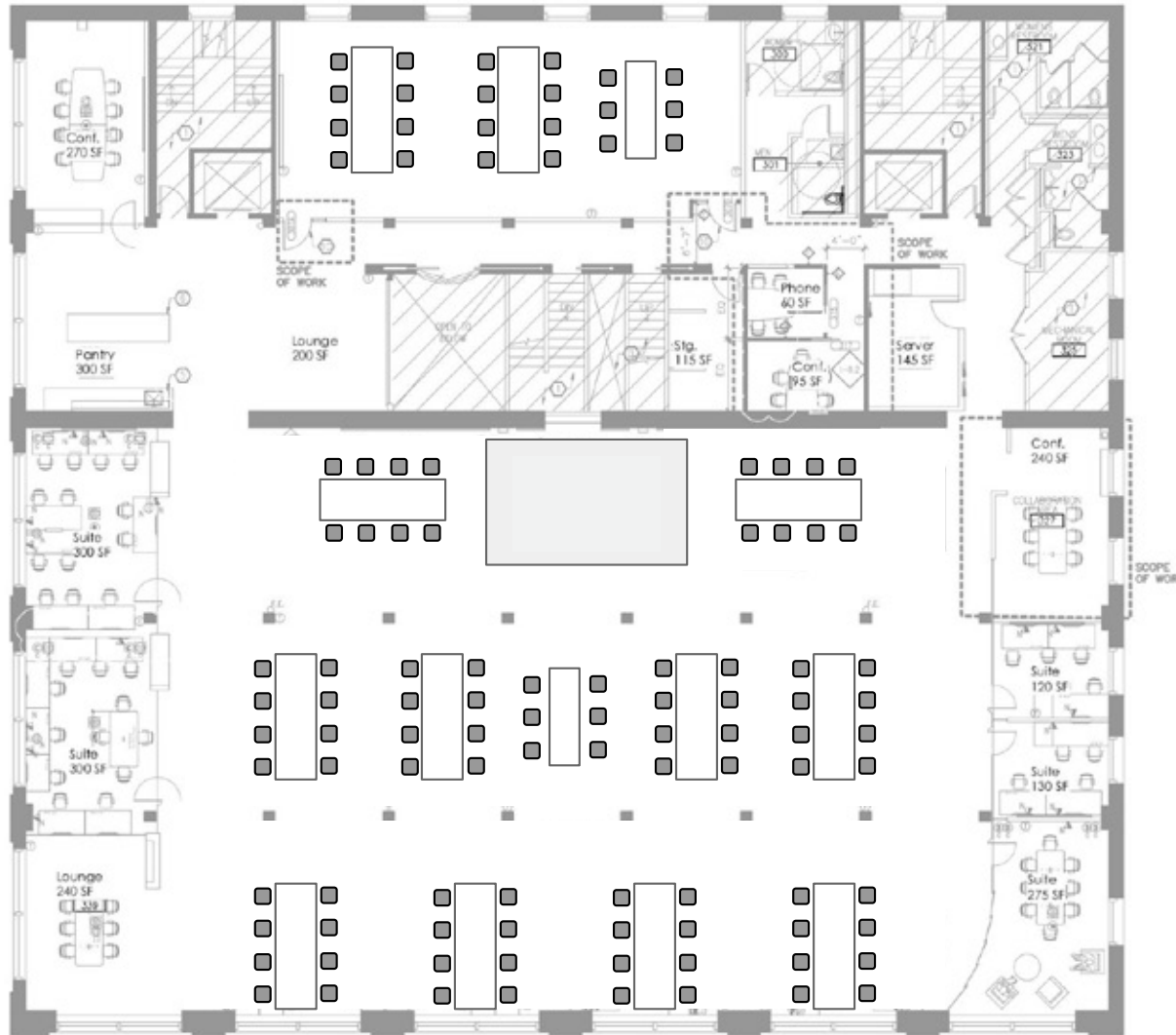
OPEN AREA FOR WORK STATIONS

PRIVATE OFFICES

CONFERENCE ROOMS

BREAK AREA

CEILING HEIGHT: 10'6"



\*FURNITURE SHOWN IN SPACE PLAN IS AVAILABLE



[CLICK TO VIEW VIRTUAL TOUR](#)



# 111 S. JACKSON

## FLOOR PLAN

# 4TH FLOOR

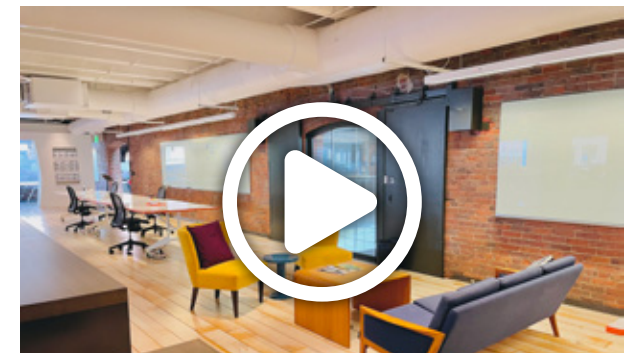
12,890 RSF

LARGE COMMUNAL BREAK AREA

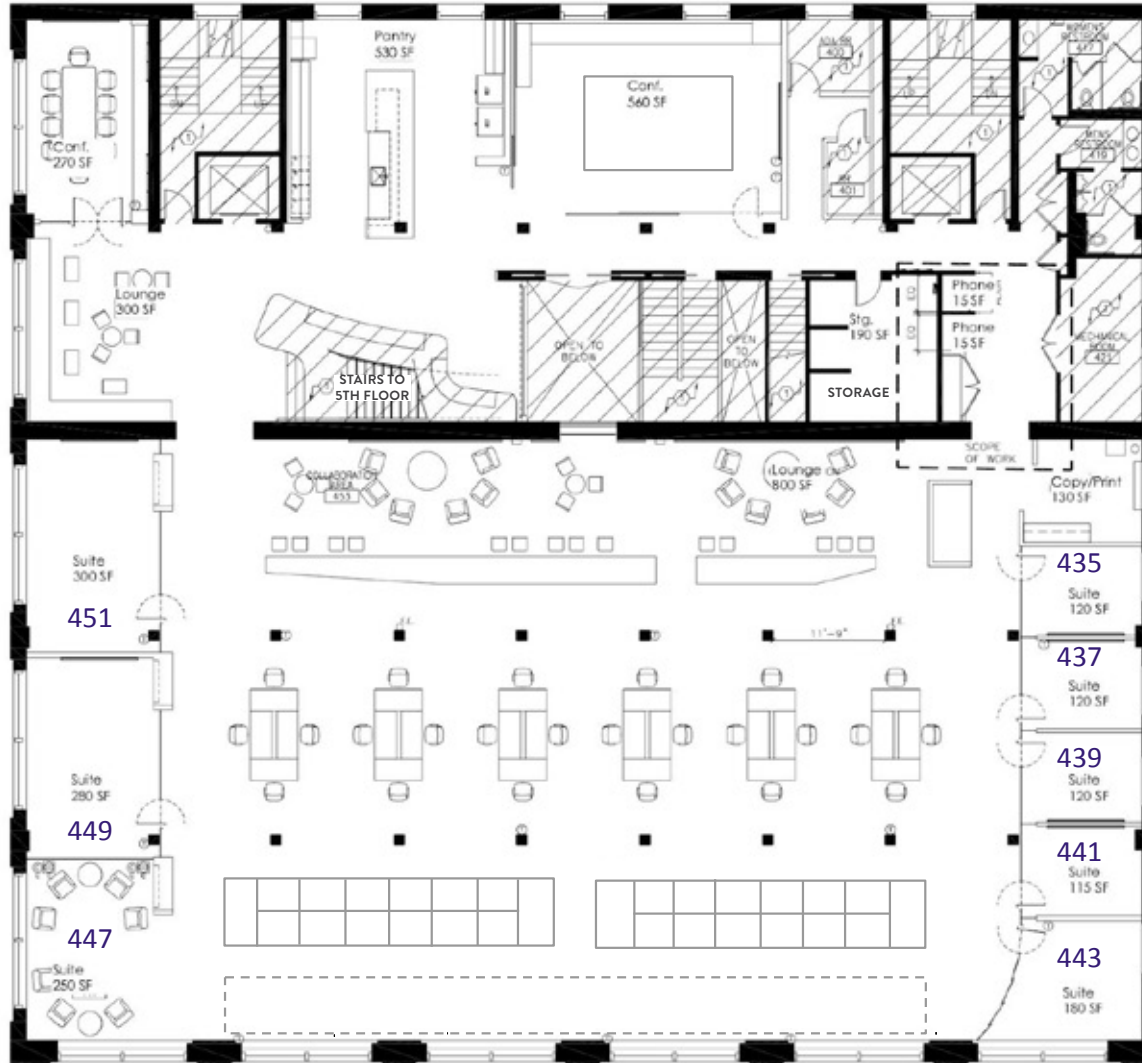
OPEN FLOOR PLAN

PRIVATE OFFICES

CEILING HEIGHT: 11'6"



[CLICK TO VIEW VIRTUAL TOUR](#)



\*FURNITURE SHOWN IN SPACE PLAN IS AVAILABLE



# 111 S. JACKSON

## FLOOR PLAN

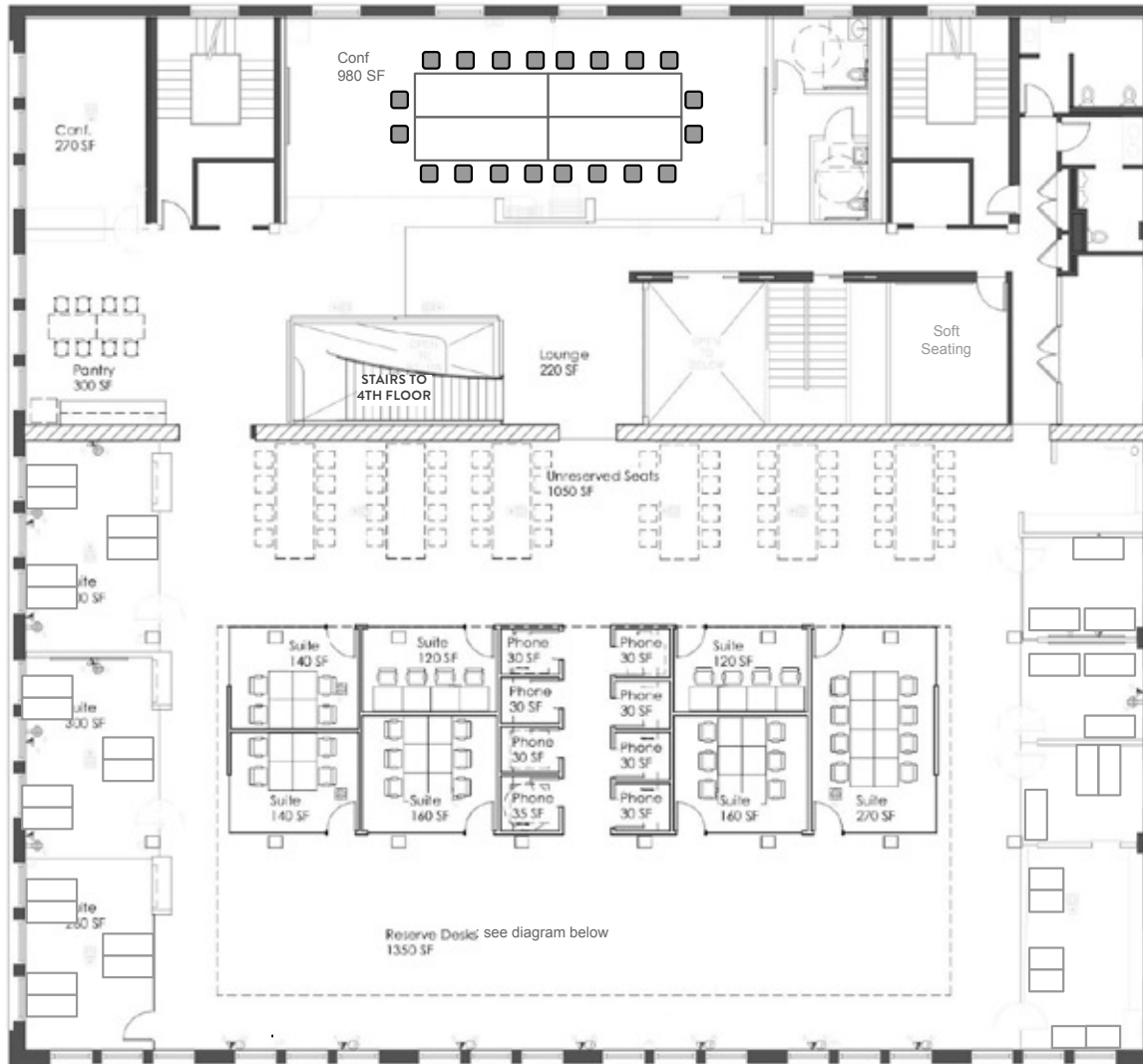
# 5TH FLOOR

13,014 RSF

CREATIVE MULTI-FUNCTION SPACE  
COMMUNAL SPACE OR AREA FOR  
WORKSTATIONS  
TEAM/ CONFERENCE ROOMS  
CEILING HEIGHT: 11' TO 14'6"



[CLICK TO VIEW VIRTUAL TOUR](#)

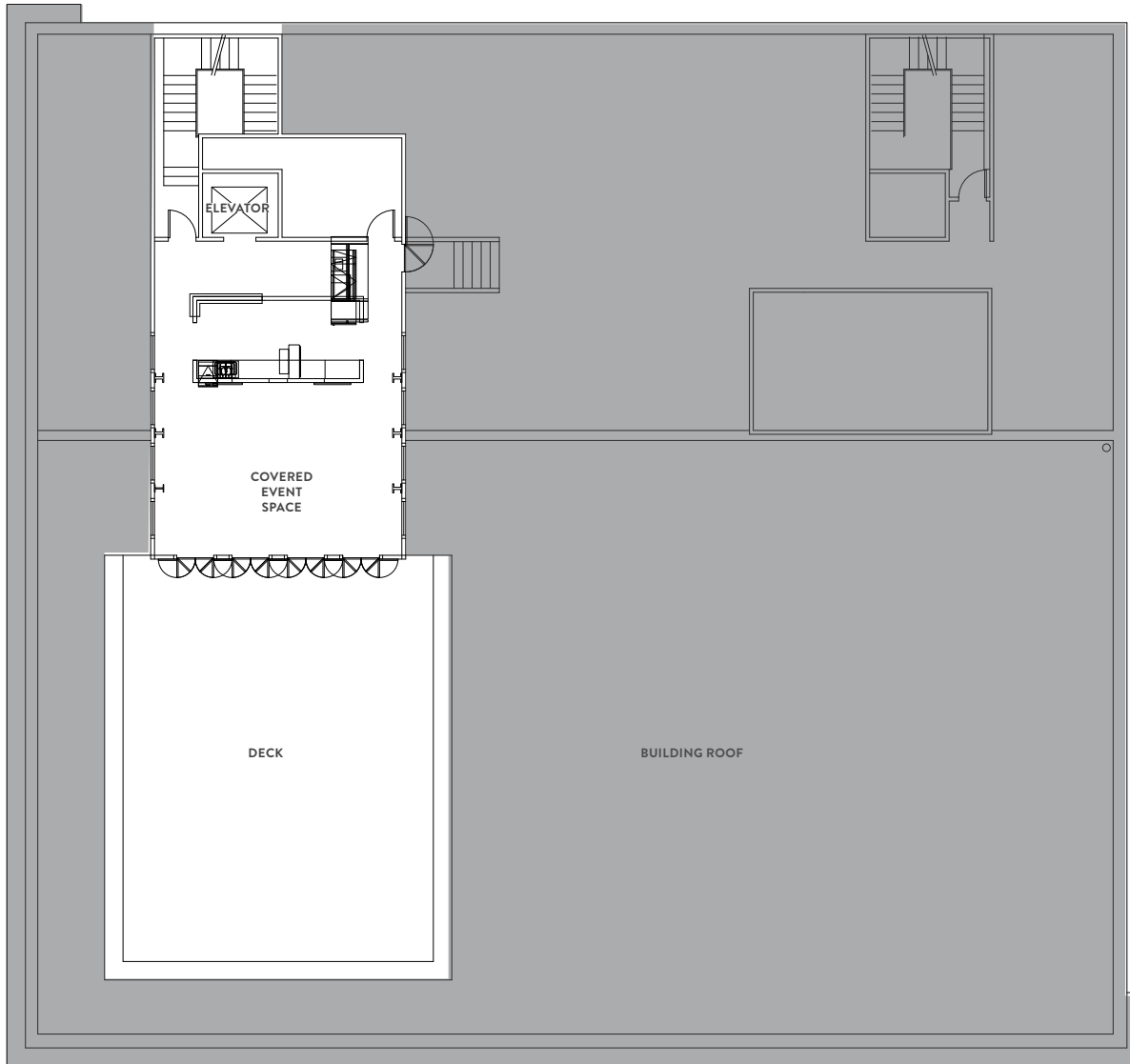


\*FURNITURE SHOWN IN SPACE PLAN IS AVAILABLE



# 111 S. JACKSON

## FLOOR PLAN



# ROOF

1,742 RSF

COVERED MEETING AND EVENT SPACE

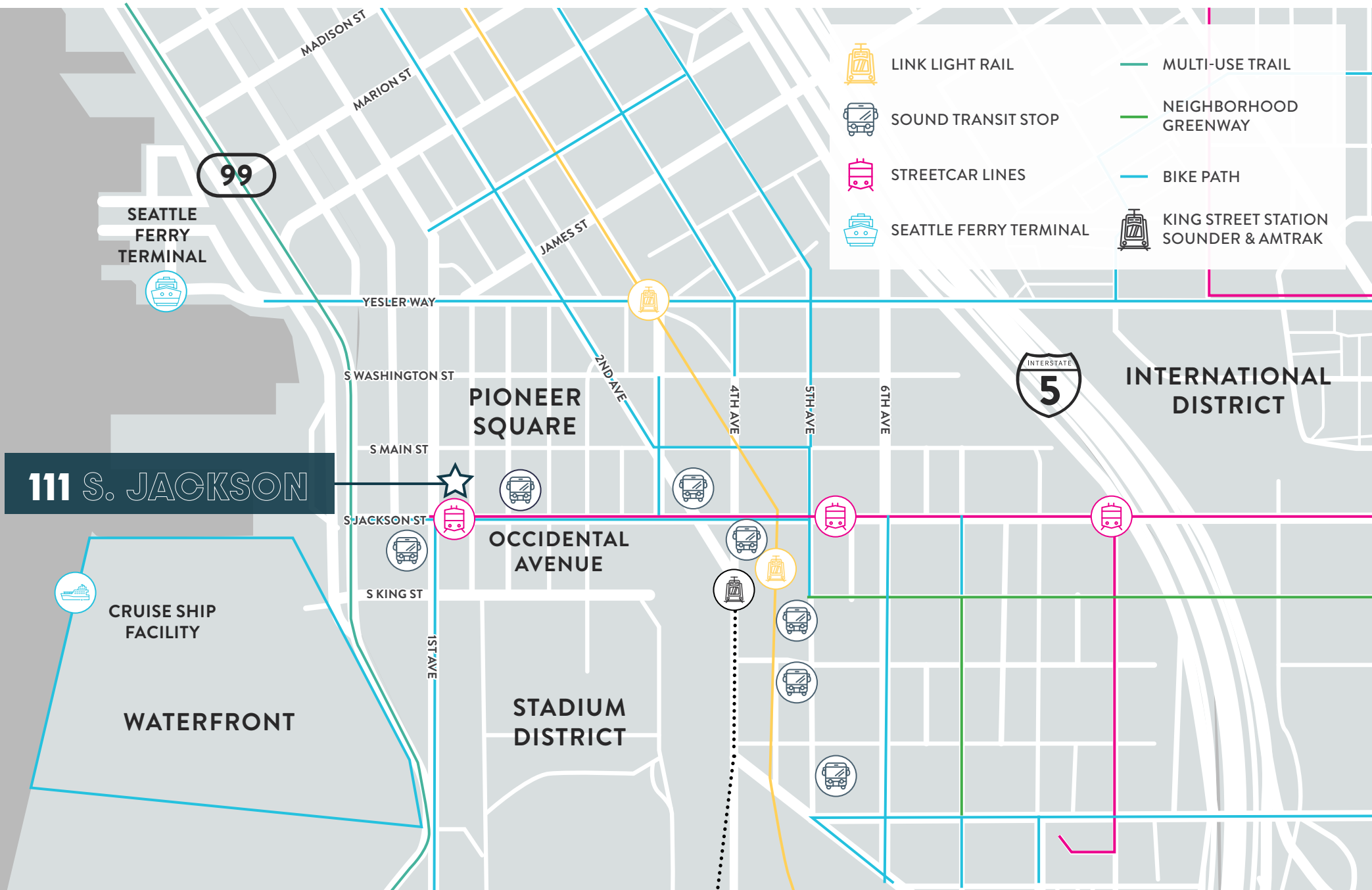
PRIVATE DECK

AMAZING VIEWS OF THE PUGET  
SOUND & DOWNTOWN SEATTLE



# 111 S. JACKSON

## A CENTER OF ACTIVITY



111 S. JACKSON

# 111 S. JACKSON

## NEARBY AMENITIES

### FOOD

1. Quality Athletics / Girin
2. Taylor Shellfish
3. Salumi
4. D&E Famous Fried Chicken
5. Main Street Gyros
6. Asia Ginger Teriyaki
7. i5 Pho Seattle
8. Casco Antiguo
9. Dead Line
10. The Halal Guys
11. Luigi's Italian Eatery
12. The Stop
13. Tat's
14. Il Corvo
15. Commissary Korean Kitchen
16. Manu's Bodega
17. Fuji Sushi
18. Tsukushinbo

### COFFEE

1. Cone & Steiner
2. Zeitgeist Coffee
3. Caffe Umbria
4. Elm Coffee
5. Convoy Coffee
6. Cherry Street
7. Slate Coffee
8. Caffe Vita

### DRINKS

1. Sluggers
2. Lodge
3. Temple Billiards
4. Flatstick Pub
5. Good Bar
6. McCoy's
7. Swannies Sports Bar
8. Pioneer Square Saloon
9. Underbelly
10. Damn The Weather
11. Casco Back Bar
12. Merchant's
13. Bar Shoppe
14. Shawn O'Donnell's
15. Collin's Pub
16. Bad Bishop



111 S. JACKSON



LUMEN FIELD

T-MOBILE FIELD

# 111 S. JACKSON

OSCAR OLIVEIRA

206.838.7637

[oscar@broderickgroup.com](mailto:oscar@broderickgroup.com)

CLAYTON HOLM

425.274.4287

[holm@broderickgroup.com](mailto:holm@broderickgroup.com)



The information contained herein has been given to us by the owner or sources which we deem reliable. We have no reason to doubt its accuracy, but we do not guarantee it. Prospective tenants should carefully verify all information contained herein.