

101 STEWART

SEATTLE, WA



“

*As one of the most well-located assets in the downtown core, 101 Stewart boasts an extensive list of walkable amenities and unmatched accessibility to transit*”



## BUILDING INFORMATION

### BUILDING ADDRESS

101 Stewart Street  
Seattle, WA. 98101

### YEAR BUILT / RENOVATED

1987 / 2018

### NUMBER OF FLOORS

12

### FLOOR PLATE

±8,500 SF

### SQUARE FOOTAGE

94,333 SF

### PARKING RATIO

0.37 / 1,000 RSF (35 Stalls)

### ELEVATORS

3 Passenger Elevators

### SECURITY

On-Site Security

### EXTERIOR

Brick Masonry

### OWNERSHIP

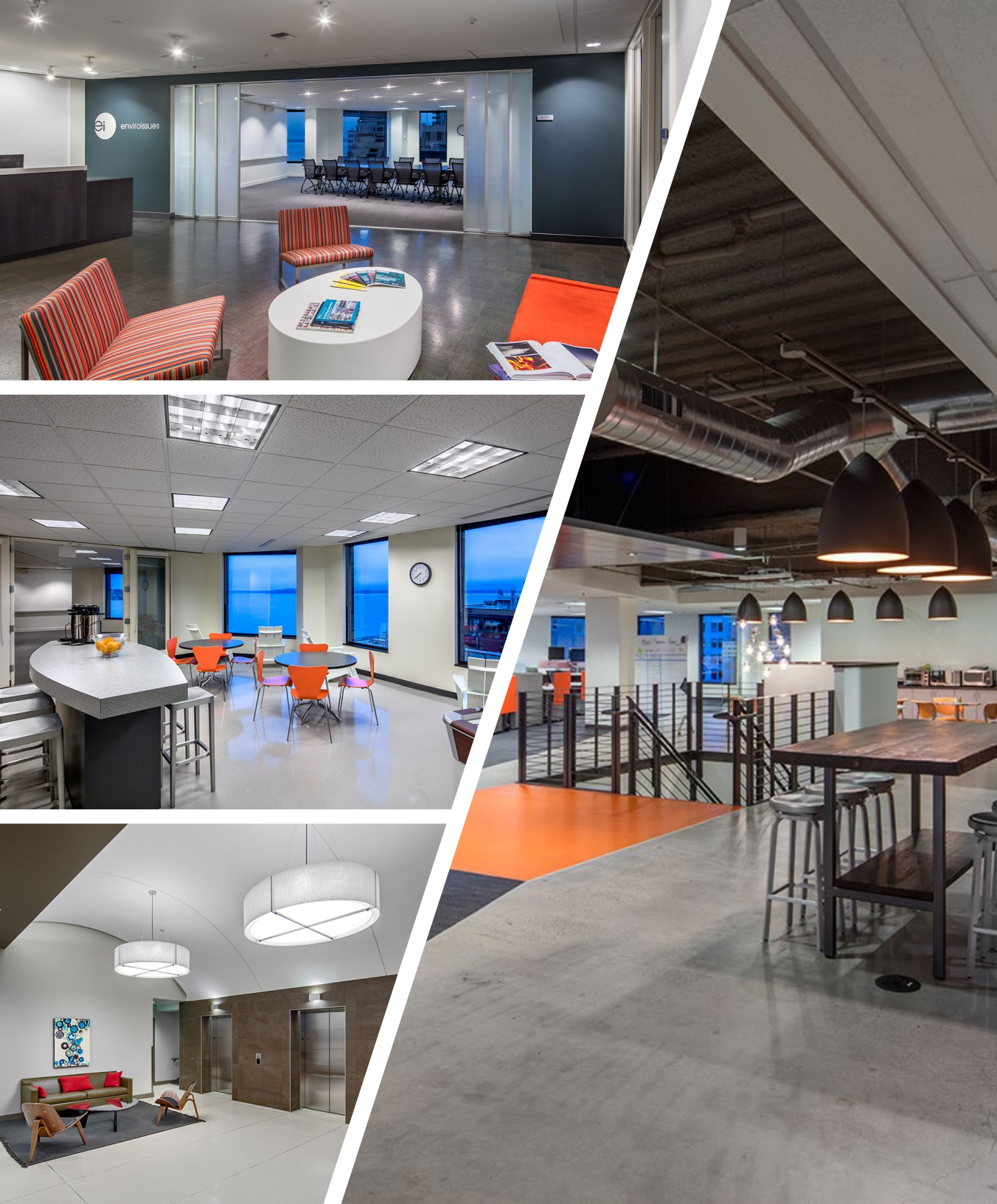
 DWS

### BIKE STORAGE

Secure Bike Storage within parking garage. NEW Bike Storage coming soon.

### CERTIFICATIONS

LEED Gold  
WELL Health-Safety Rated



# BUILDING HIGHLIGHTS

NEW Bike storage and showers coming soon

Prominent location directly across from Pike Place Market, retail core and the Seattle CBD

Full control of your entire floor and office environment

Small, highly flexible floorplates that promote social distancing

Abundant restaurants and coffee shops within two blocks, including Artly Coffee

Easy access to public transportation; bus and light rail via Westlake Transit Station

Views of the Puget Sound, Olympic Mountains and North/South corridor

# CURRENT AVAILABILITIES

## FLOORS 10/11/12

20,207 RSF Available May 1, 2024 or sooner if needed. Two full floors and one partial floor. Divisible to 3,915 RSF.

## FLOOR 8

8,146 RSF Available now. Open ceiling, creative space. Move-in ready condition.

## FLOORS 6/7

16,593 RSF Available now. Perimeter private office buildout. Two full floors connected by interstitial stairwell. Furniture included. Move-in ready condition. Flexible lease term.

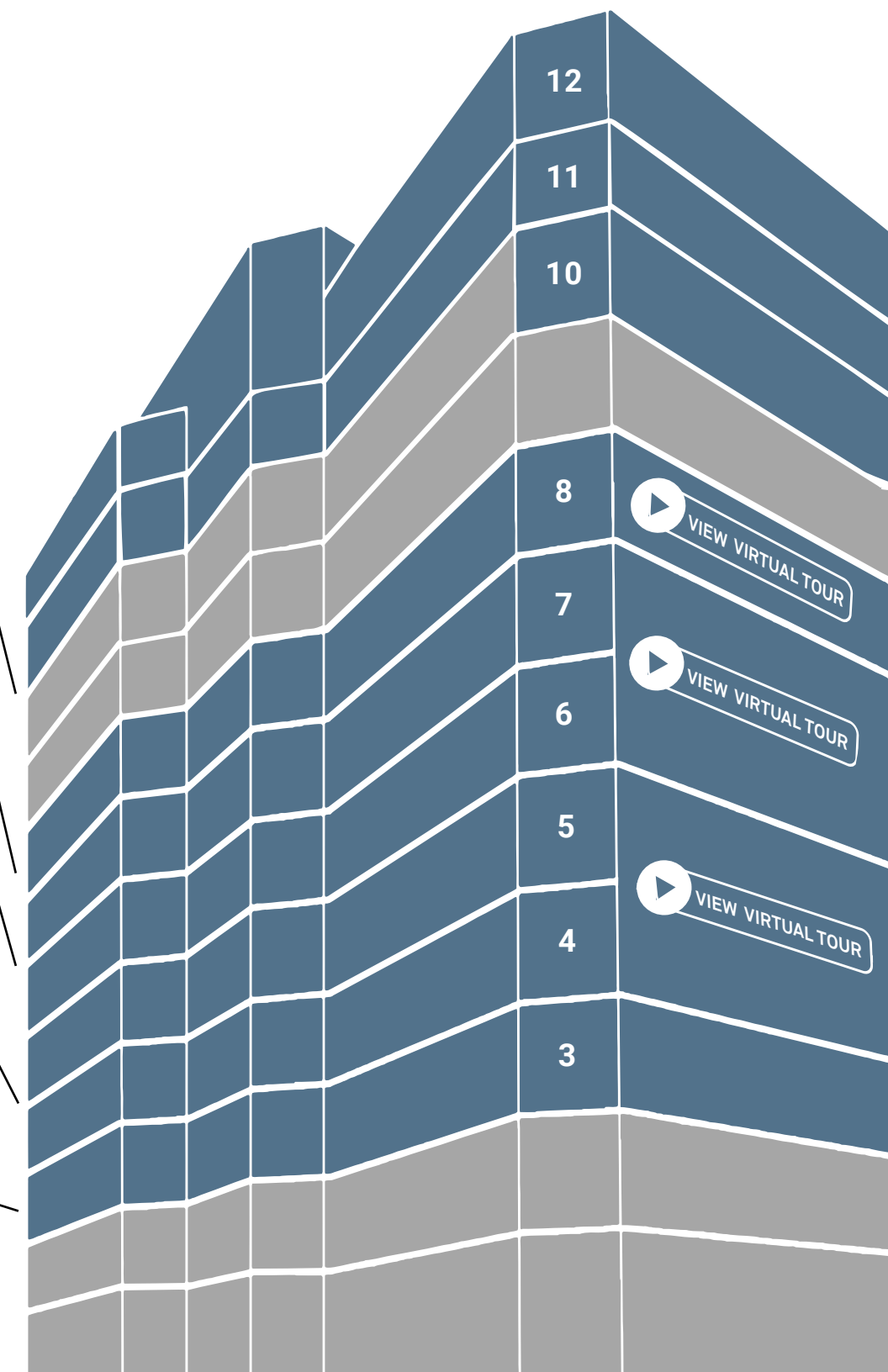
## FLOORS 4/5

16,894 RSF Available now. Two full floors connected by dramatic interstitial stairwell. Open ceiling, creative space. Move-in ready condition. Flexible lease term.

## FLOOR 3

6,055 RSF Available Jan 1, 2024. Plug n' play suite. Fully Furnished and cabled. Flexible lease term.

Can be made contiguous or divisible to 2 floors



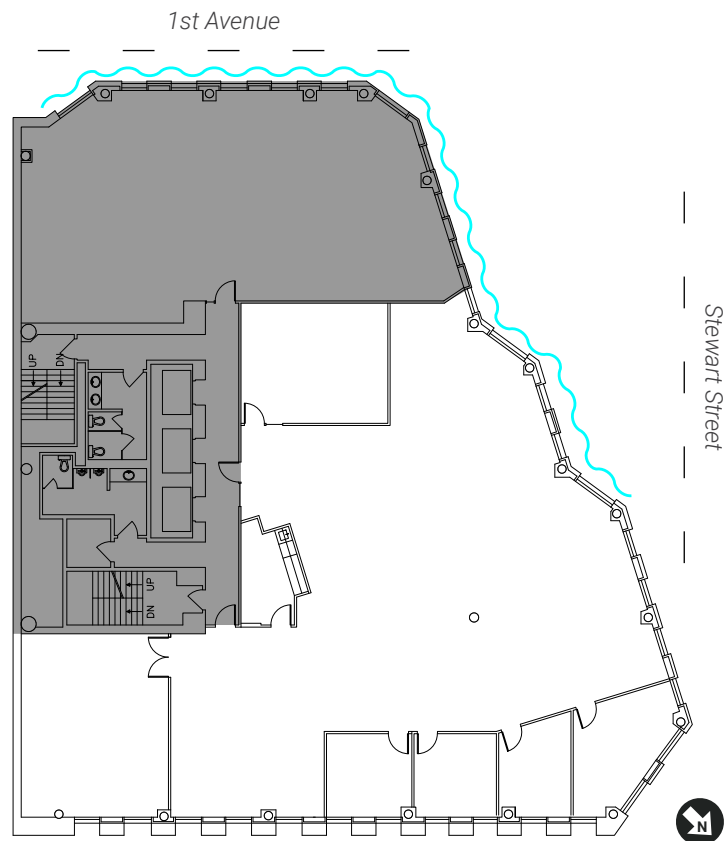


101 STEWART  
SEATTLE, WA

# Floor 3

6,055 RSF

Available January 1, 2024



FLOOR 3  
6,055 RSF

NEWMARK



 Water Views



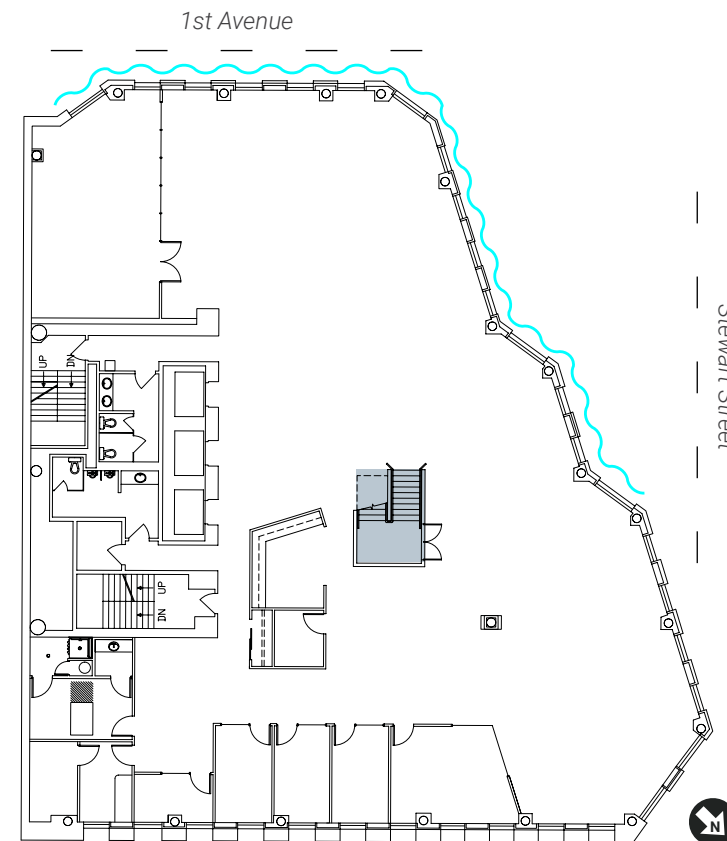
101 STEWART  
SEATTLE, WA

# Floors 4 + 5

16,894 RSF

Available Now

 VIEW VIRTUAL TOUR

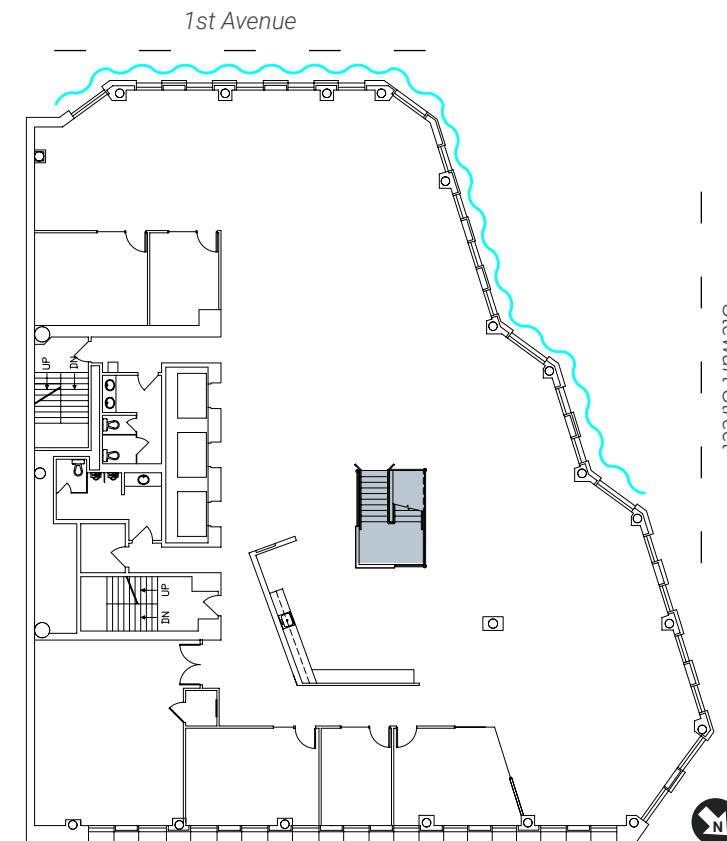


FLOOR 4  
8,447 RSF

NEWMARK



 Water Views



FLOOR 5  
8,447 RSF

NEWMARK



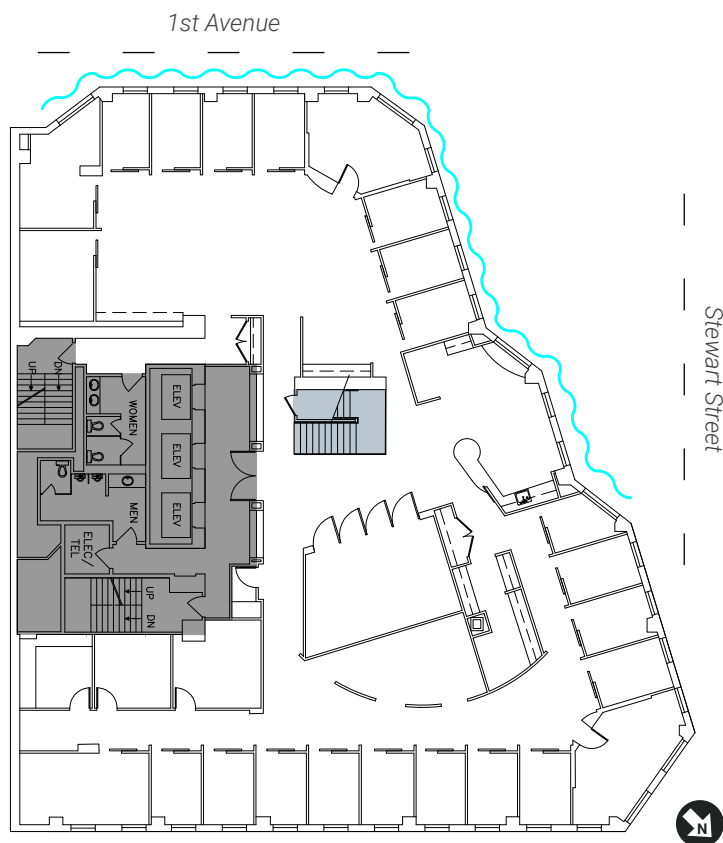
101 STEWART  
SEATTLE, WA

# Floors 6 + 7

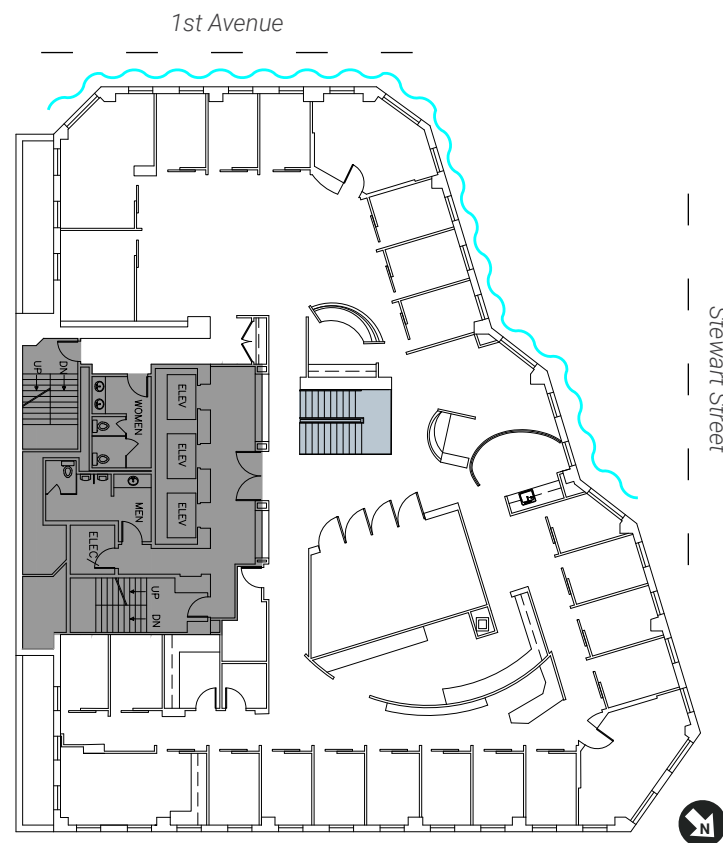
16,593 RSF [VIEW VIRTUAL TOUR](#)

Available Now  
Furniture Included

 Water Views



FLOOR 6  
8,447 RSF



FLOOR 7  
8,146 RSF

NEWMARK 

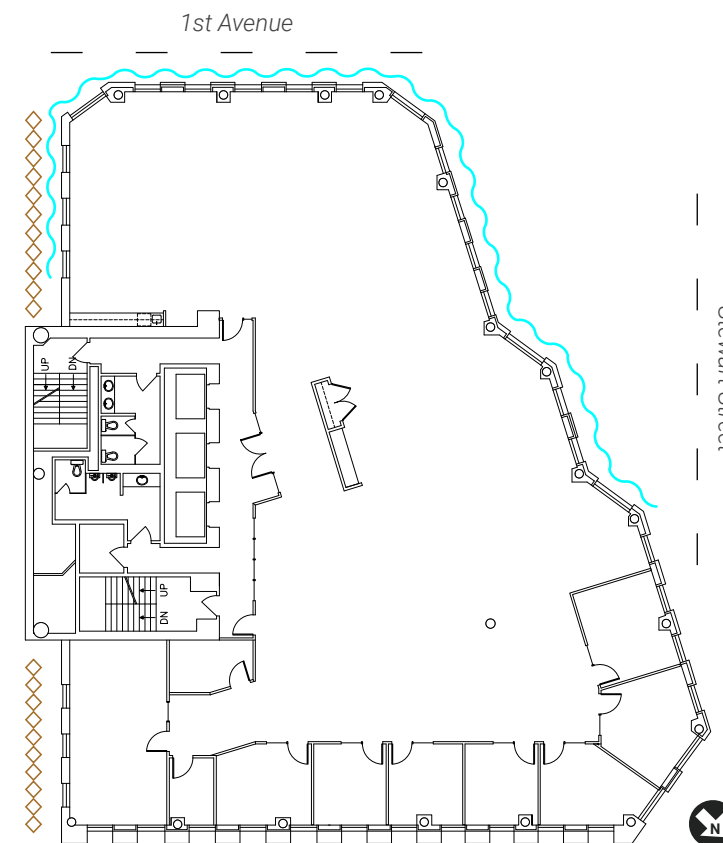
101 STEWART  
SEATTLE, WA

# Floor 8

8,146 RSF  
Available Now

[VIEW VIRTUAL TOUR](#)

 Water Views  
 City Views



FLOOR 8  
8,146 RSF

NEWMARK 





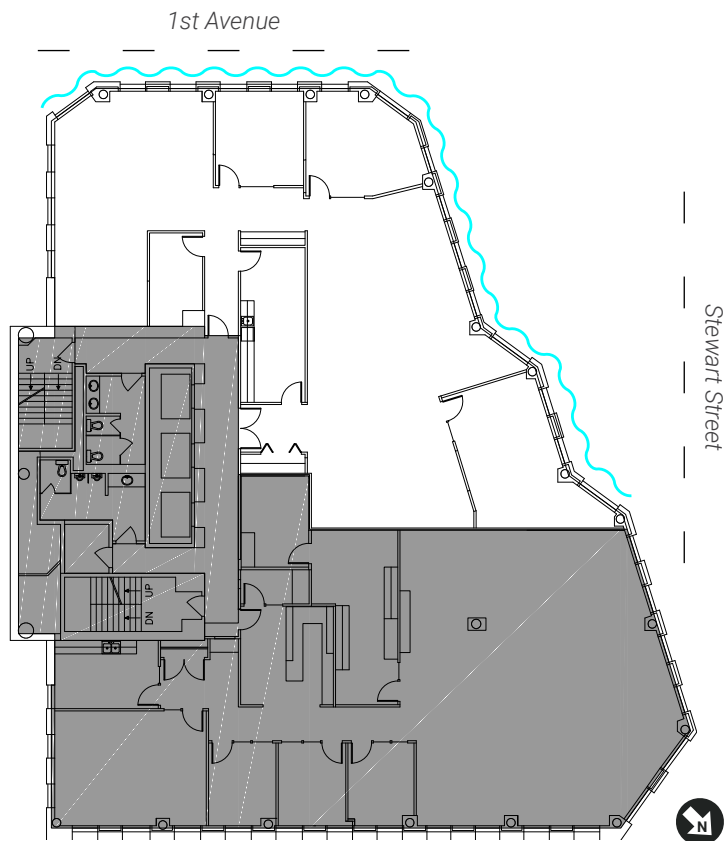
101 STEWART  
SEATTLE, WA

# Floors 10 + 11 + 12

20,207 RSF

Available May 1, 2024 (or sooner if needed)

 Water Views



FLOOR 10  
3,915 RSF

NEWMARK // DWS



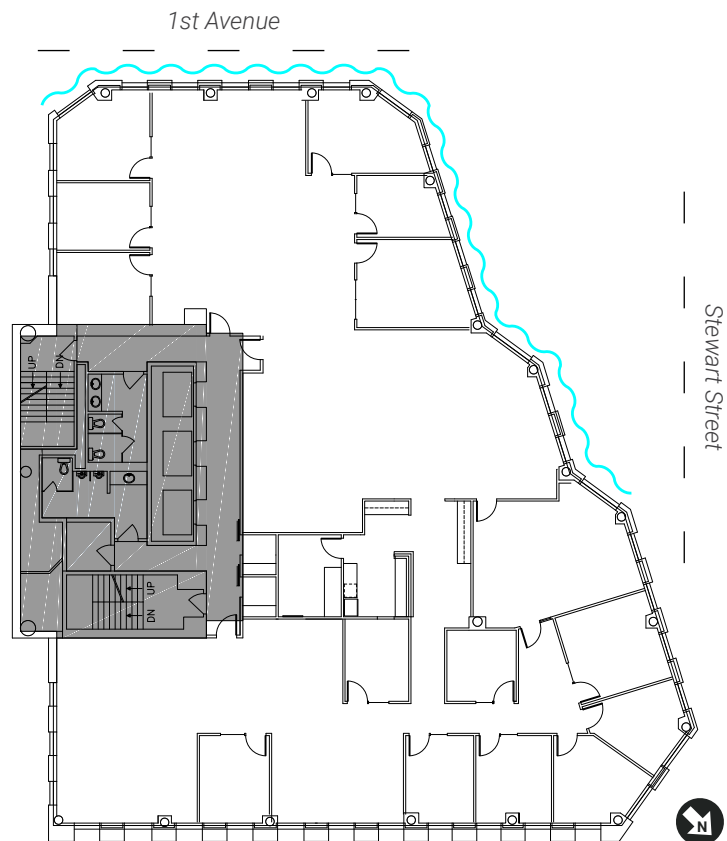
101 STEWART  
SEATTLE, WA

# Floors 10 + 11 + 12

20,207 RSF

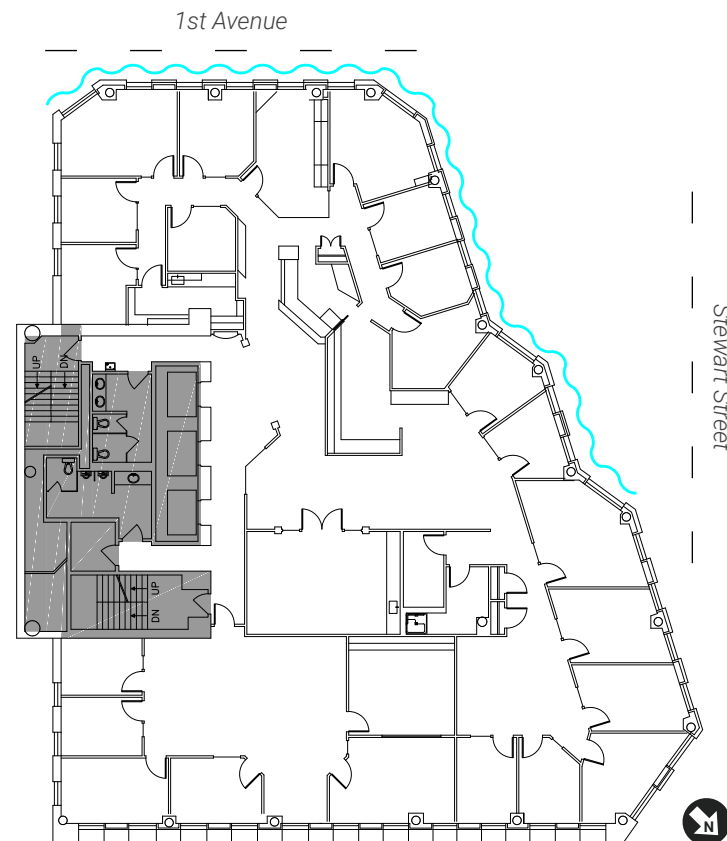
Available May 1, 2024 (or sooner if needed)

 Water Views



FLOOR 11  
8,146 RSF

NEWMARK // DWS



FLOOR 12  
8,146 RSF

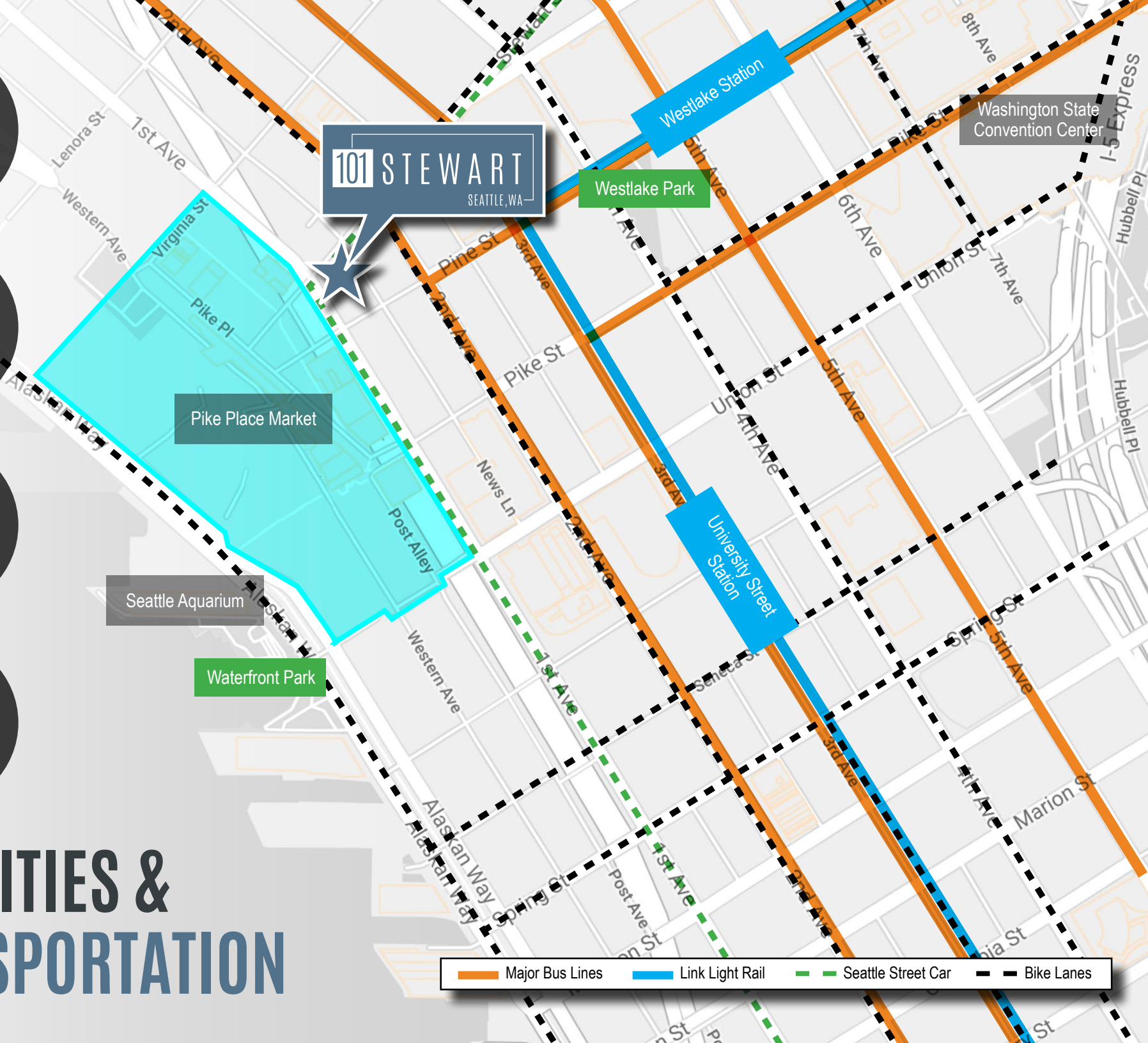
MORE THAN  
**50**  
RESTAURANTS  
within 3 blocks

MORE THAN  
**10**  
COFFEE SHOPS  
within 3 blocks

WALKER'S  
PARADISE  
**99**

RIDER'S  
PARADISE  
**100**

# AMENITIES & TRANSPORTATION



**JESSE OTTELE**  
206.452.4529  
jesse.ottele@nrmk.com

**ANNE MARIE KOEHLER**  
206.487.5167  
AnneMarie.Koehler@nrmk.com

**ERIKA KOEHLER**  
206.487.5168  
Erika.Koehler@nrmk.com

**NEWMARK**

**DWS**

The distributor of this communication is performing acts for which a real estate license is required. The information contained herein has been obtained from sources deemed reliable but has not been verified and no guarantee, warranty or representation, either express or implied, is made with respect to such information. Terms of sale or lease and availability are subject to change or withdrawal without notice.