

FOR SALE/LEASE

Panattoni Frederickson 184

5017 184th St E, Frederickson, WA



Q2 2019 DELIVERY

CONTACT

Laura Fox, CCIM
253.722.1441 | lfox@kiddermathews.com

Todd Clarke
253.722.1422 | tclarke@kiddermathews.com



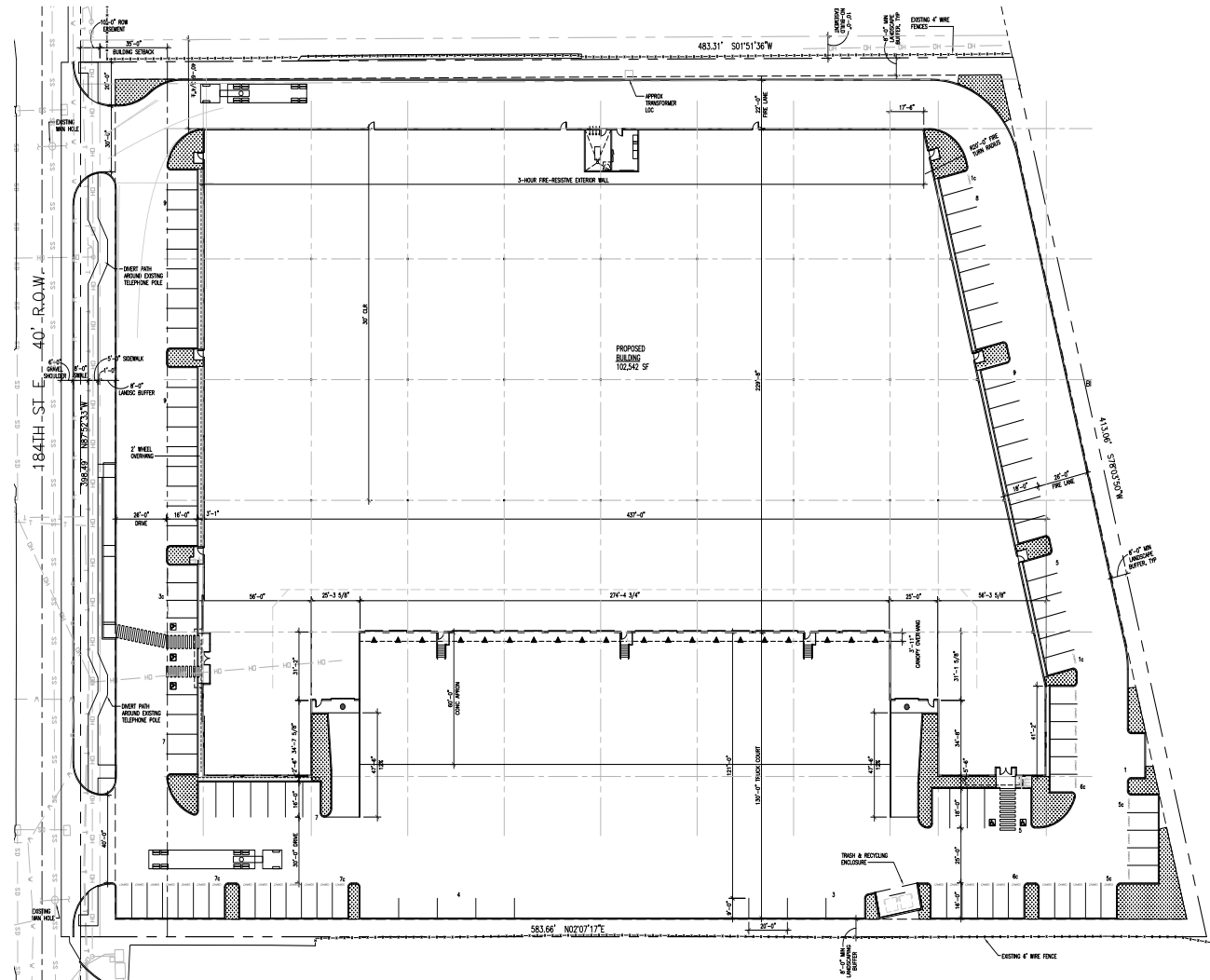
Panattoni Frederickson 184

5017 184th St E, Frederickson, WA

Features

DELIVERY	Q2 2019
BUILDING SF	102,542 SF building
LAND	4.89 AC (213,163 SF)
OFFICE SF	Build-to-suit
CONSTRUCTION	Concrete tilt construction; reinforced slab
DOORS	20 DH/2 GL
POWER	1200 AMPS
LIFE SAFETY	ESFR fire protection
CLEAR HEIGHT	30'
PARKING	108 parking stalls
ZONING	Employment Center (EC)
AMENITIES	Rail possible
SALE PRICE	\$129.00 PSF Shell
LEASE RATE	Shell \$0.47 PSF Office \$1.00 PSF

Site Plan



Laura Fox, CCIM
253.722.1441
lfox@kiddermathews.com

Todd Clarke
253.722.1422
tclarke@kiddermathews.com

kiddermathews.com

 PANATTONI®  Kidder Mathews

This information supplied herein is from sources we deem reliable. It is provided without any representation, warranty or guarantee, expressed or implied as to its accuracy. Prospective Buyer or Tenant should conduct an independent investigation and verification of all matters deemed to be material, including, but not limited to, statements of income and expenses. Consult your attorney, accountant, or other professional advisor.

Panattoni Frederickson 184

5017 184th St E, Frederickson, WA



LOCATION HIGHLIGHTS

47 Miles to Port of Seattle

45 Miles to Seattle

14 Miles to Port of Tacoma

146 Miles to Portland



Laura Fox, CCIM
253.722.1441
lfox@kiddermathews.com

Todd Clarke
253.722.1422
tclarke@kiddermathews.com

kiddermathews.com



This information supplied herein is from sources we deem reliable. It is provided without any representation, warranty or guarantee, expressed or implied as to its accuracy. Prospective Buyer or Tenant should conduct an independent investigation and verification of all matters deemed to be material, including, but not limited to, statements of income and expenses. Consult your attorney, accountant, or other professional advisor.