

For Sale
Development Land
\$377,643 or \$3.65/Sq. Ft.



MWM Land

2110 E. 52nd St. North, Sioux Falls, SD

Property Features

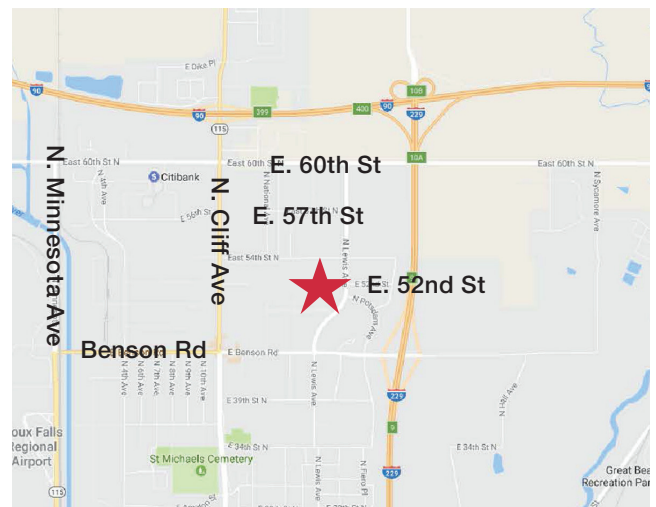
- 2.375 acres (103,464 sq. ft.) of industrial/office land
- Excellent location for industrial or office building
- Architectural drawings have been completed for this site and are negotiable
- City utilities to site
- Zoned I-1

Pricing

- List price is \$377,643 or \$3.65/sq. ft.
- 2015 Real Estate Taxes are \$3,031.35

Location

- Located in the Sioux Empire Development Park Four
- Easy access to Benson Road, N. Cliff, I-90 & I-229
- Neighbors include Midwestern Mechanical, Poet Energy, Sioux Falls Corporate Center, Fergeson Company, Pepsi Bottling Company, Dakota Kitchen & Bath, Commnet



Dennis Breske, CCIM, SIOR, MBA

+1 605 444 7100 Office

+1 605 310 6666 Cell

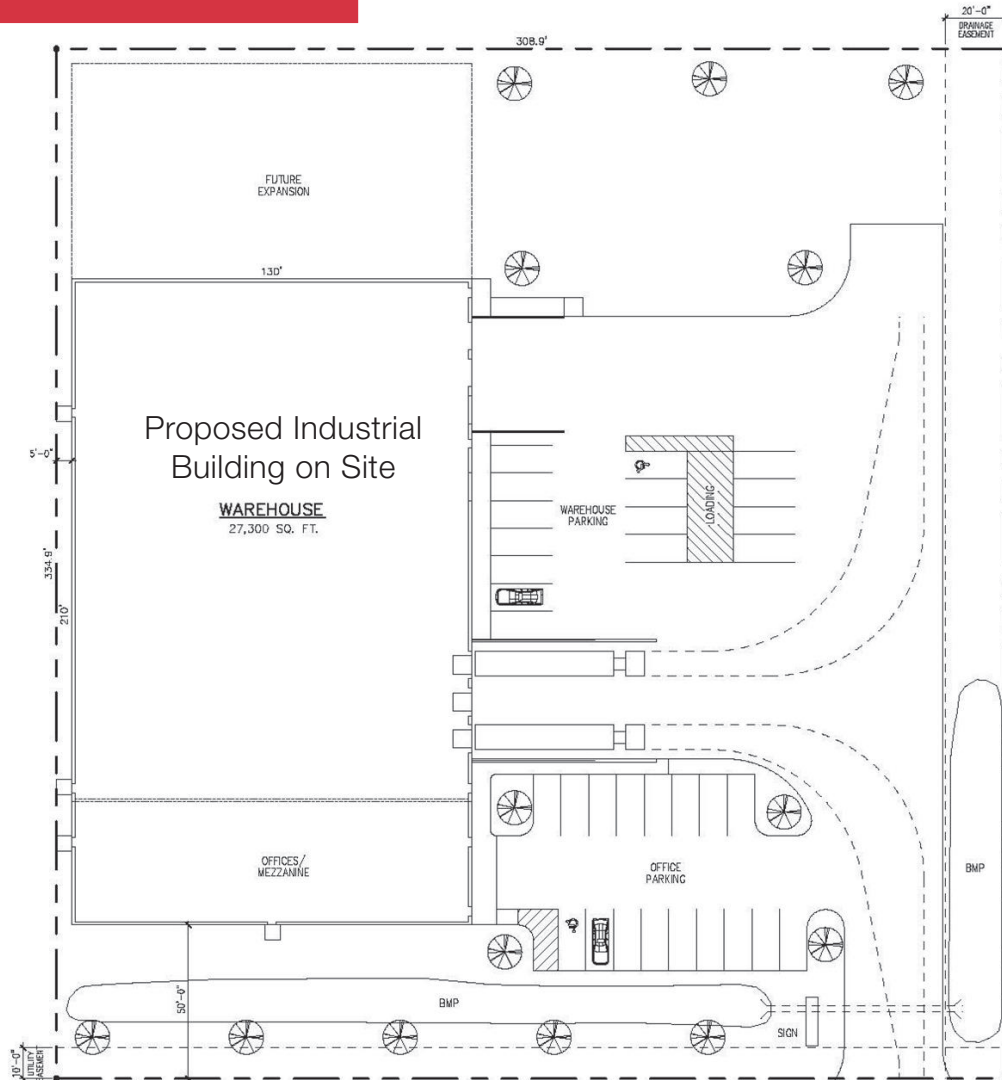
dbreske@naisiouxfalls.com

NO WARRANTY OR REPRESENTATION, EXPRESS OR IMPLIED, IS MADE AS TO THE ACCURACY OF THE INFORMATION CONTAINED HEREIN, AND THE SAME IS SUBMITTED SUBJECT TO ERRORS, OMISSIONS, CHANGE OF PRICE, RENTAL OR OTHER CONDITIONS, PRIOR SALE, LEASE OR FINANCING, OR WITHDRAWAL WITHOUT NOTICE, AND OF ANY SPECIAL LISTING CONDITIONS IMPOSED BY OUR PRINCIPALS NO WARRANTIES OR REPRESENTATIONS ARE MADE AS TO THE CONDITION OF THE PROPERTY OR ANY HAZARDS CONTAINED THEREIN ARE ANY TO BE IMPLIED.

2500 W. 49th Street, Suite 100
Sioux Falls, SD 57105
+1 605 357 7100

naisiouxfalls.com

For Sale
Development Land



MWM Land

2210 E. 52nd Street, Sioux Falls, SD

E. 52nd St. North



NASioux Falls

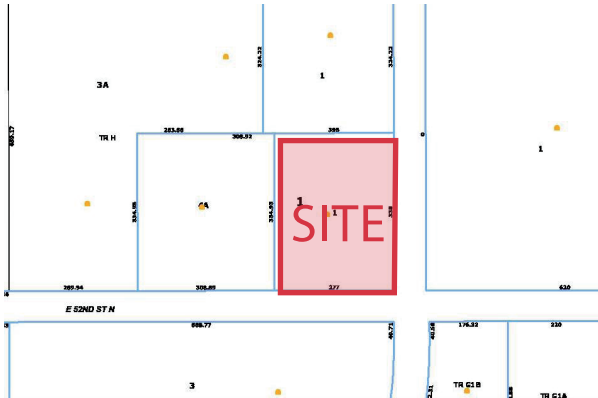
2500 W. 49th Street, Suite 100
Sioux Falls, SD 57105
+1 605 357 7100
naisiouxfalls.com

For Sale
Development Land



MWM Land

2210 E. 52nd Street, Sioux Falls, SD



NASioux Falls

2500 W. 49th Street, Suite 100
Sioux Falls, SD 57105
+1 605 357 7100
naisiouxfalls.com