

AVAILABLE FOR LEASE

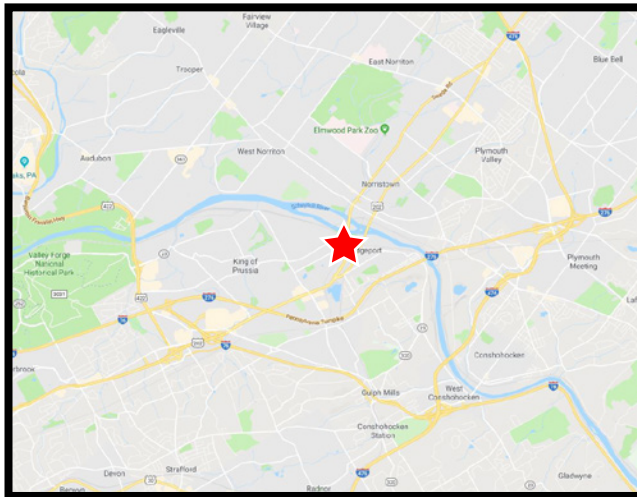
One Schuylkill Parkway | Bridgeport | Montgomery County, PA







100 -3,554 +/- SF OFFICE BUILDING



12,000 SF, 2 story office building plus lower level available

2 story multi tenant office building available for lease in Bridgeport, PA. Direct access to Rt. 202, and Rt. 23, minutes to King of Prussia, and Norristown. Easy access to major highways, PA Turnpike, only a few minutes to the Montgomery County Court House, Conshohocken, and 30 minutes to the Philadelphia International Airport or Center City Philadelphia



-  Bldg Size: 12,000 sf on 3 floors
-  Public Sewer, Water, Gas (PECO)
-  Central Air
-  Ample on site parking
-  Public Transportation
-  Zoned: LI

Contact:

Gene Mastrangelo
gmastrangelo@tornetta.com

610-279-4000

TORNETTA
REALTY CORP.



910 Germantown Pike, Plymouth Meeting, PA 19462
 610-279-4000 / FAX: 610-275-6787

www.TORNETTA.com

AVAILABLE FOR LEASE

One Schuylkill Parkway | Bridgeport | Montgomery County, PA

100 -3,554 +/- SF OFFICE BUILDING



Contact:

Gene Mastrangelo
gmastrangelo@tornetta.com

610-279-4000



The foregoing information has been obtained from sources deemed to be reliable; however, no warranty or representation is made as to accuracy. This information is subject to errors, omissions, prior sale or lease, or withdrawal without notice.

EXHIBIT "A"
One Schuylkill Parkway
First Floor

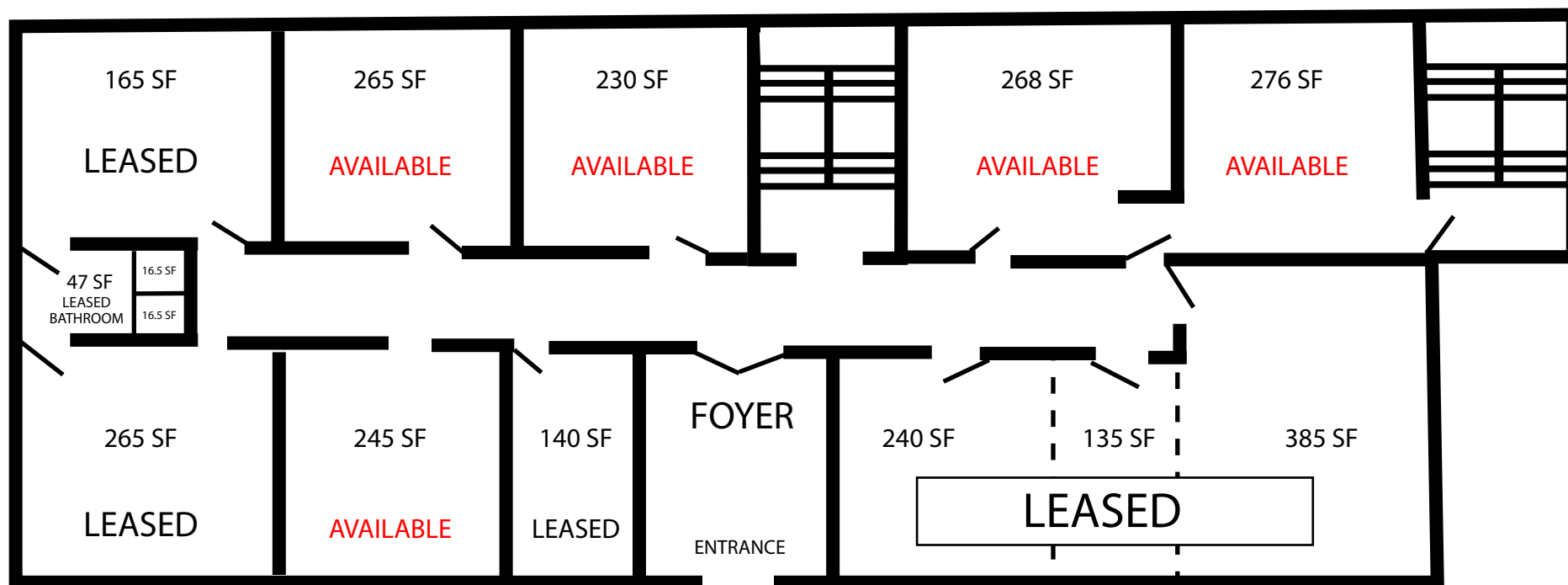


EXHIBIT "A"

One Schuylkill Parkway Second Floor

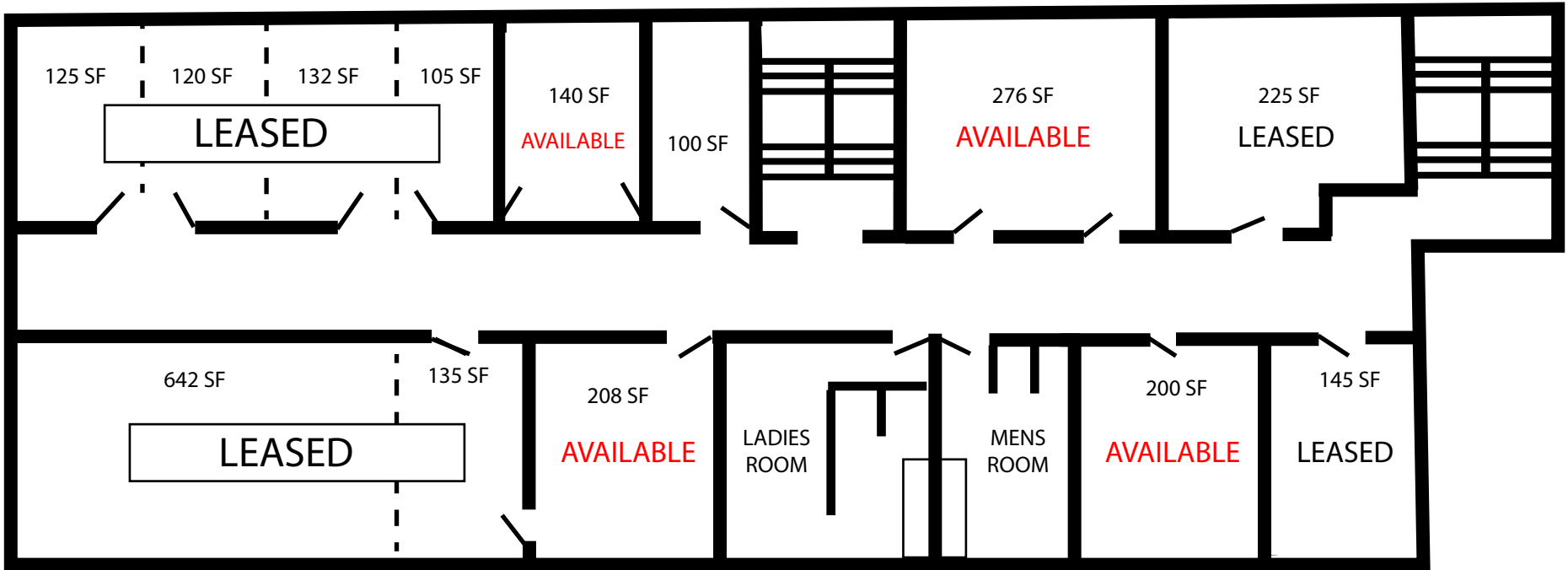


EXHIBIT "A"
One Schuylkill Parkway
Lower Level

