

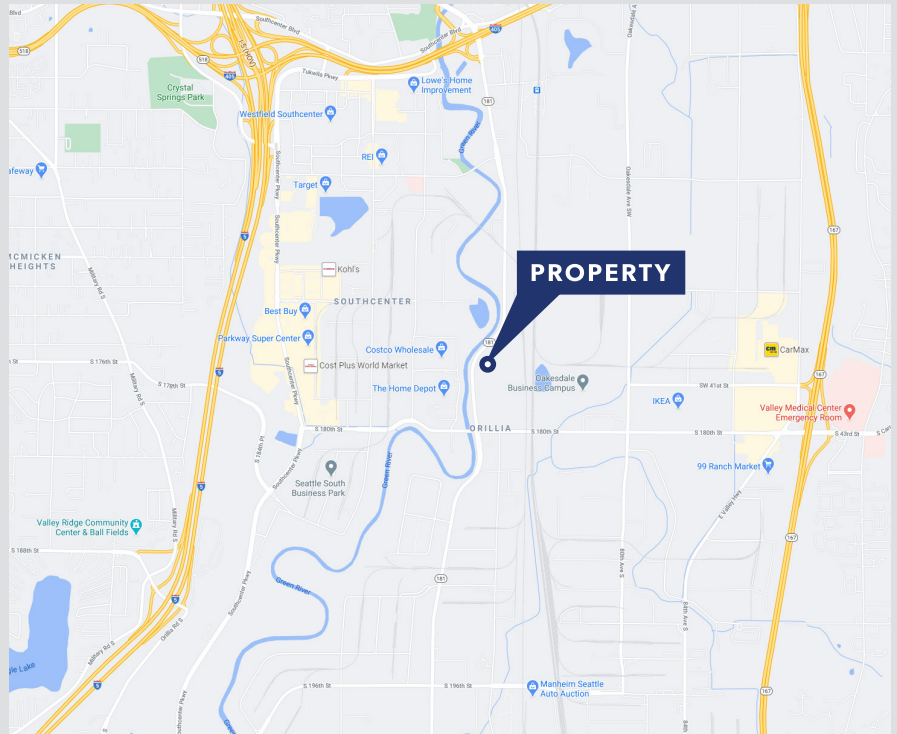
FOR LEASE  
28,700 SF

**NORTH VALLEY BUSINESS PARK**  
17616 W VALLEY HWY | TUKWILA, WA



## FEATURES

- 28,700 SF available
- Approximately 3,500 SF of office space
- 24' clear height warehouse ceiling
- 6 dock doors and 3 grade-level doors
- Prime location on W Valley Hwy with convenient access to Hwy-167 and the I-405/I-5 interchange
- Zoned C/Li for numerous business uses
- **\$1.15/SF Shell, \$1.25/SF Office + NNN**



**EXCLUSIVELY OFFERED BY:**

**George Rockwell, SIOR**  
(206) 679-7625  
grockwell@andoverco.com

**THE ANDOVER  
COMPANY, INC.**  
CORFAC INTERNATIONAL



THE ANDOVER COMPANY, INC./CORFAC INTERNATIONAL

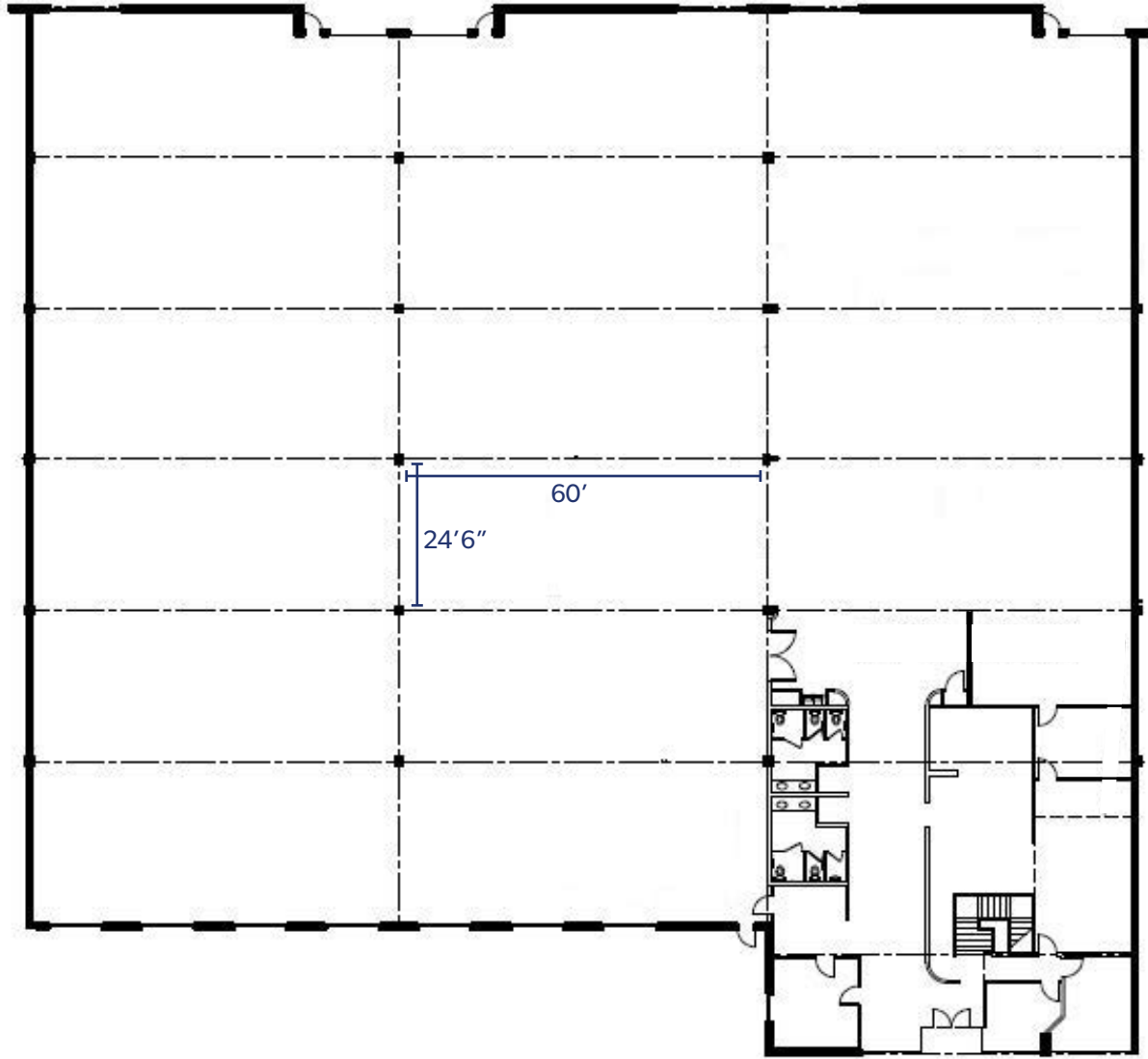
900 SW 16th St, Ste 100 | Renton, WA 98057 | (206) 244-0770 | [www.andoverco.com](http://www.andoverco.com)

*The information contained herein has been obtained from reliable sources, but is not guaranteed. A prospective buyer/tenant should verify each item relating to this property and all information contained herein.*

FOR LEASE  
28,700 SF

# NORTH VALLEY BUSINESS PARK

17616 W VALLEY HWY | TUKWILA, WA



**EXCLUSIVELY OFFERED BY:**

**George Rockwell, SIOR**  
(206) 679-7625  
grockwell@andoverco.com



THE ANDOVER COMPANY, INC./CORFAC INTERNATIONAL  
900 SW 16th St, Ste 100 | Renton, WA 98057 | (206) 244-0770 | [www.andoverco.com](http://www.andoverco.com)

*The information contained herein has been obtained from reliable sources, but is not guaranteed. A prospective buyer/tenant should verify each item relating to this property and all information contained herein.*