

Chandler Midway Corporate Center

5650 W. Chandler Blvd - Suite 2, Chandler, AZ 85226

Professional Office Condo Available For Sale

\$931,710 (\$190 PSF)



Suite 2, ±4,809 SF - Class A Office Condo For Sale \$931,710 (\$190 PSF) | Investment Sale

- Reception, 9 Offices, 2 Conference Rooms, Break Room, File/Server Room, Storage, 2 Restrooms
- Seller Leaseback Opportunity
- 7.5% Cap Rate

- Parking Ratio: 5.5/1,000
- 2007 Construction
- Parcel Number: 301-66-348, 348,349,352,353
- Zoning: C-1, City of Chandler
- Located at Kyrene Rd & Chandler Blvd
- Minutes From Loop 101/Price Rd, Loop 202 (SanTan Fwy) and I-10

For More Information,
Please Contact:

Tyson Breinholt
D: 480.966.7513
M: 602.315.7131
tbreinholt@cpiaz.com



TEMPE: 2323 W. University Drive, Tempe, AZ 85281 | 480.966.2301
SCOTTSDALE: 7025 N. Scottsdale Rd., Suite 220, Scottsdale, AZ 85253 | www.cpiaz.com

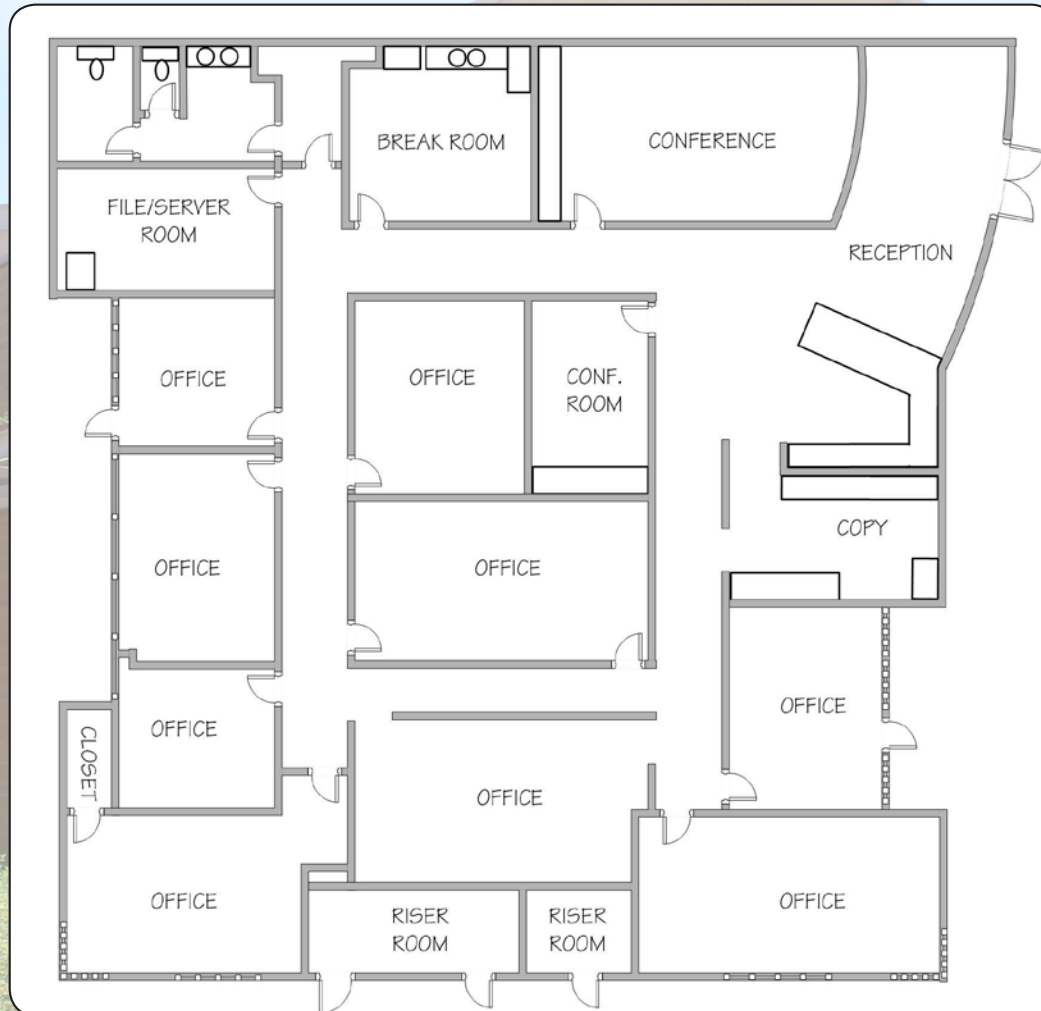
Chandler Midway Corporate Center

5650 W. Chandler Blvd - Suite 2, Chandler, AZ 85226

\$931,710 (\$190 PSF)

Professional Office Condo Available For Sale

Suite 2
±4,809 SF



For More Information,
Please Contact:

Tyson Breinholt
D: 480.966.7513
M: 602.315.7131
tbreinholt@cpiaz.com



COMMERCIAL PROPERTIES INC.

Locally Owned. Globally Connected. CORPAC International

TEMPE: 2323 W. University Drive, Tempe, AZ 85281 | 480.966.2301
SCOTTSDALE: 7025 N. Scottsdale Rd., Suite 220, Scottsdale, AZ 85253 | www.cpiaz.com

The information contained herein has been obtained from various sources. We have no reason to doubt its accuracy; however, J & J Commercial Properties, Inc. has not verified such information and makes no guarantee, warranty or representation about such information. The prospective buyer or lessee should independently verify all dimensions, specifications, floor plans, and all information prior to the lease or purchase of the property. All offerings are subject to price change, prior sale, lease, or withdrawal from the market without prior notice. Effective: 11 2 17