



5600 W 95TH STREET • OVERLAND PARK, KS

PROPERTY DETAILS

Available Spaces:

Suite 204: 1,200 SF (dental space)

Suite 207: 936 SF (lobby/reception, four small offices, break area)

Suite 213: 725 SF (lobby/reception, two offices, conference room, in suite sink in break room)

Parking: 6:1,000 SF

7 minutes to I-435 and Nall Ave

Area food options include: Sprouts, Big Biscuit, Conroy's Public House, Honey Baked Ham and Pizza Hut

FOR MORE INFORMATION

ADAM ABRAMS, CCIM

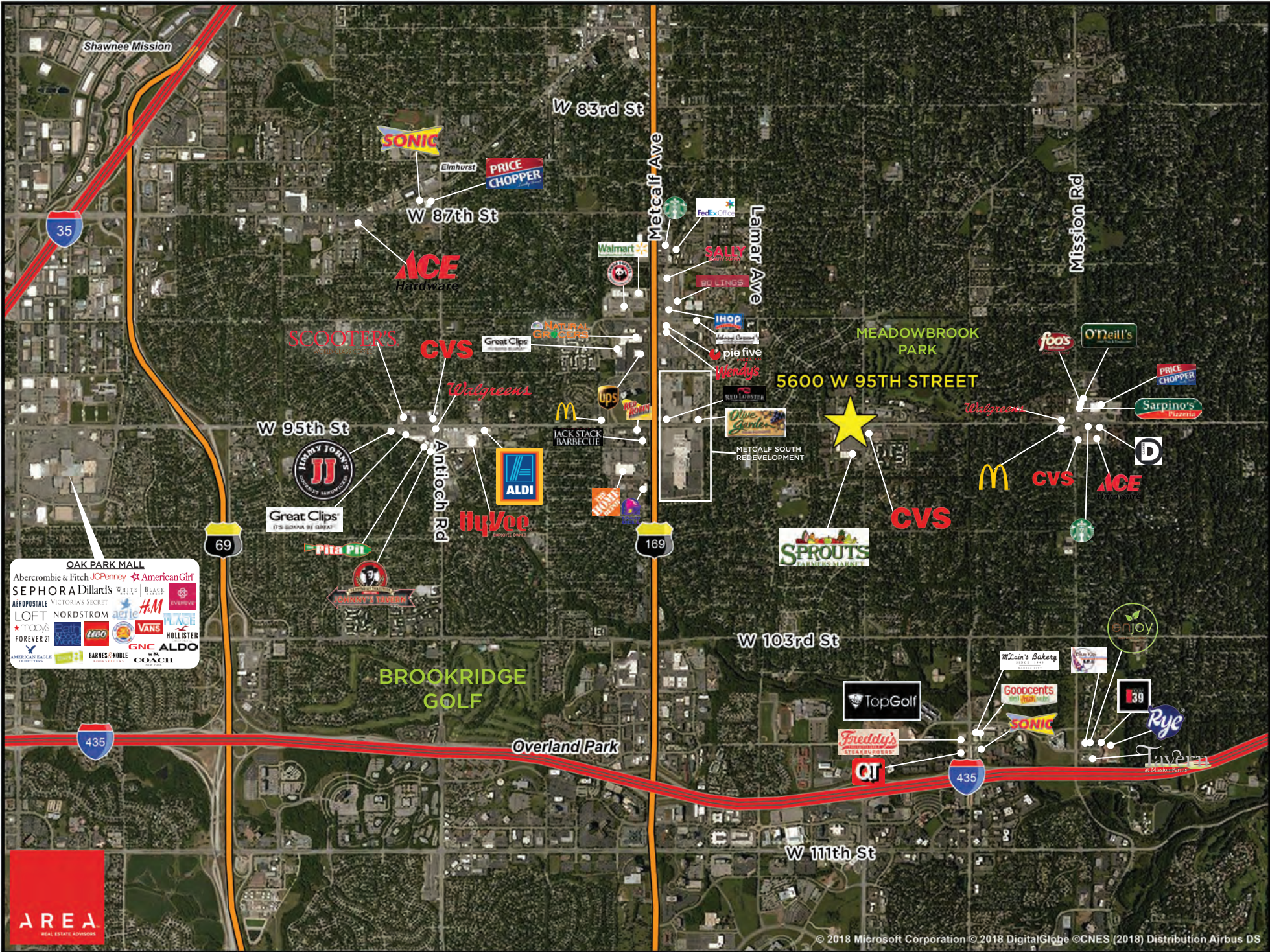
D 816.876.2544

E AABRAMS@OPENAREA.COM

HANK SIMPSON

D 816.777.2859

E HSIMPSON@OPENAREA.COM



OAK PARK MALL

Abercrombie & Fitch | JCPenney | American Girl
 SEPHORA | Dillard's | Victoria's Secret
 AÉROPOSTALE | Victoria's Secret
 LOFT | NORDSTROM | aerle | H&M | EXPRESS
 macy's | FOREVER 21 | LEGO | VANS | PLACE | HOLLISTER
 AMERICAN EAGLE | BARNES & NOBLE | COACH



SITE PLAN

