

# 2ND FLOOR CREATIVE OFFICE - CULVER CITY EAST

5350 VENICE BLVD. LOS ANGELES, CA 90019



**GREG OFFSAY** · (818) 501-2212 x104  
greg@illicre.com · DRE #01837719

**ASHER PERGAMENT** · (818) 501-2212 x118  
asher@illicre.com · DRE #01922775

17547 Ventura Blvd, Suite 304 · Encino CA 91316 · 818.501.2212/Phone · 818.501.2202/Fax · www.illicre.com · DRE #01834124

This information has been secured from sources we believe to be reliable, but we make no representations or warranties, expressed or implied, as to the accuracy of the information. References to square footage are approximate. References to neighboring retailers are subject to change, and may not be adjacent to the vacancy being marketed either prior to, during, or after leases are signed. Lessee must verify the information and bears all risk for any inaccuracies.



# 5350 VENICE BOULEVARD, LOS ANGELES, CA 90019



- + Freestanding Office Building on Venice Corridor East of Culver City
- + Close to Freeway, LaBrea, And Fairfax
- + Late Mid-Century Construction
- + Brick and Glass Exterior

**GREG OFFSAY** · (818) 501-2212 x104  
greg@illicre.com · DRE #01837719

**ASHER PERGAMENT** · (818) 501-2212 x118  
asher@illicre.com · DRE #01922775

17547 Ventura Blvd, Suite 304 · Encino CA 91316 · 818.501.2212/Phone · 818.501.2202/Fax · www.illicre.com · DRE #01834124

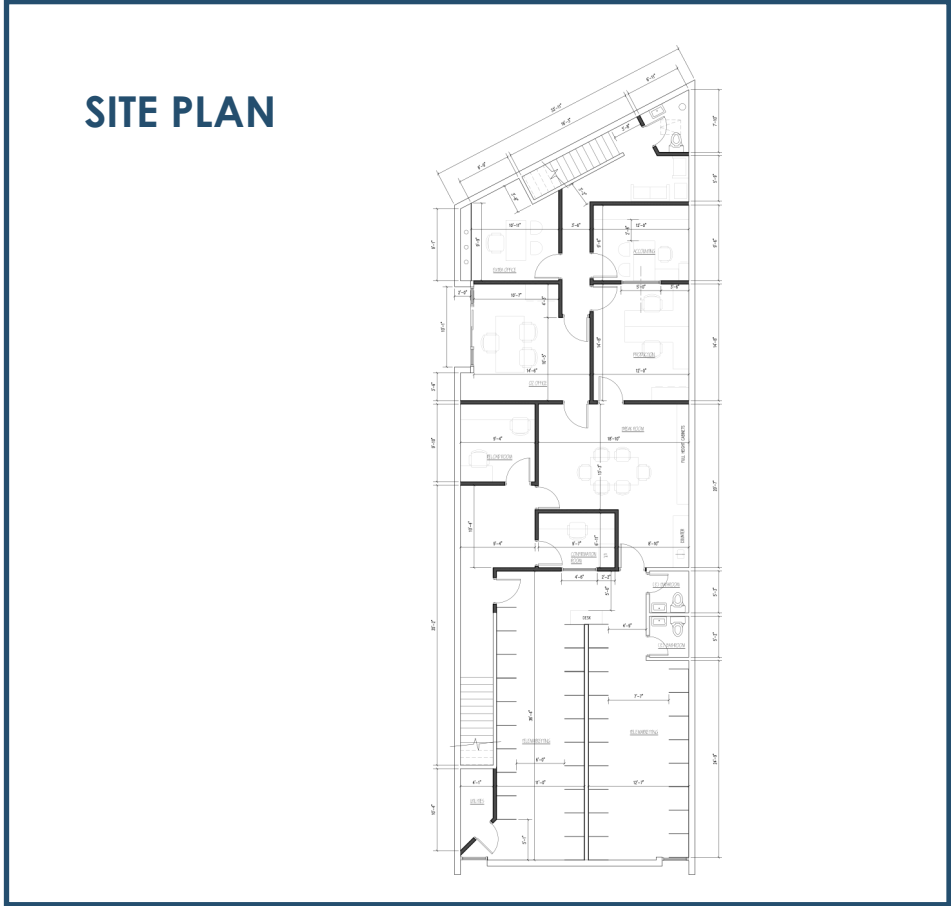
This information has been secured from sources we believe to be reliable, but we make no representations or warranties, expressed or implied, as to the accuracy of the information. References to square footage are approximate. References to neighboring retailers are subject to change, and may not be adjacent to the vacancy being marketed either prior to, during, or after leases are signed. Lessee must verify the information and bears all risk for any inaccuracies.



# 5350 VENICE BOULEVARD, LOS ANGELES, CA 90019



- + Great Mid-City Location
- + East of Culver City
- + On Venice Boulevard between La Brea and Fairfax
- + Easy Freeway Access



**GREG OFFSAY** · (818) 501-2212 x104  
greg@illicre.com · DRE #01837719

**ASHER PERGAMENT** · (818) 501-2212 x118  
asher@illicre.com · DRE #01922775



# 5350 VENICE BOULEVARD, LOS ANGELES, CA 90019



## POPULATION

1-mile	48,530
3-mile	376,393
5-mile	1,168,241



## AVERAGE HOUSEHOLD INCOME

1-mile	\$78,303
3-mile	\$96,862
5-mile	\$86,252



## DAYTIME POPULATION

1-mile	8,460
3-mile	185,022
5-mile	570,158



**GREG OFFSAY** · (818) 501-2212 x104  
greg@illicre.com · DRE #01837719

**ASHER PERGAMENT** · (818) 501-2212 x118  
asher@illicre.com · DRE #01922775

17547 Ventura Blvd, Suite 304 · Encino CA 91316 · 818.501.2212/Phone · 818.501.2202/Fax · www.illicre.com · DRE #01834124

This information has been secured from sources we believe to be reliable, but we make no representations or warranties, expressed or implied, as to the accuracy of the information. References to square footage are approximate. References to neighboring retailers are subject to change, and may not be adjacent to the vacancy being marketed either prior to, during, or after leases are signed. Lessee must verify the information and bears all risk for any inaccuracies.



# 5350 VENICE BOULEVARD, LOS ANGELES, CA 90019



GREG OFFSAY · (818) 501-2212 x104  
greg@illicre.com · DRE #01837719

ASHER PERGAMENT · (818) 501-2212 x118  
asher@illicre.com · DRE #01922775



17547 Ventura Blvd, Suite 304 · Encino CA 91316 · 818.501.2212/Phone · 818.501.2202/Fax · www.illicre.com · DRE #01834124

This information has been secured from sources we believe to be reliable, but we make no representations or warranties, expressed or implied, as to the accuracy of the information. References to square footage are approximate. References to neighboring retailers are subject to change, and may not be adjacent to the vacancy being marketed either prior to, during, or after leases are signed. Lessee must verify the information and bears all risk for any inaccuracies.