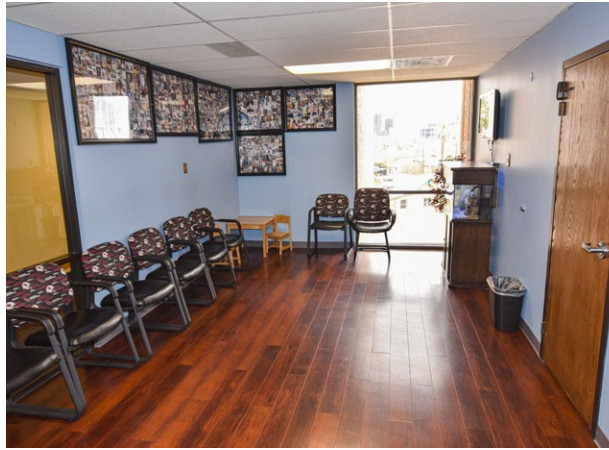


515 MEMORIAL MEDICAL OFFICES



MEDICAL SPACE FOR LEASE

515 WEST BUCKEYE ROAD, PHOENIX, AZ 85003



515 MEMORIAL MEDICAL OFFICES

BUILDING FEATURES

Easy access for patients with good parking, reasonably priced for smaller practices

INFORMATION

Year Built: 1977

Asking Rate: \$14/NNN

LOCATION FEATURES

Just south of downtown on Buckeye and 7th Avenue, just off I-17/60 (Maricopa Freeway)

SUITE AVAILABILITY

Suites ranging from 850-4,911 SF

TENANT MIX

Join ophthalmology, gastroenterology, pediatric and primary care practices



2501 East Camelback Road, Suite 1, Phoenix, Arizona 85016

T 602.956.5000 F 602.956.5333 www.transwestern.com

Vince Femiano

Senior Vice President

602.954.7559

vince.femiano@transwestern.com

Kate Morris

Senior Vice President

602.296.6369

kate.morris@transwestern.com

Kevin Smigiel

Senior Associate

602.265.5502

kevin.smigiel@transwestern.com

The information provided herein was obtained from sources believed reliable; however, Transwestern makes no guarantees, warranties or representations as to the completeness or accuracy thereof. The presentation of this property is submitted subject to errors, omissions, change of price or conditions, prior to sale or lease, or withdrawal without notice. Copyright © 2019 Transwestern. 0819