

FOR LEASE

OFFICE SPACE AVAILABLE

1600

SUMMIT AVENUE

Waukesha, WI 53188



BUILDING DETAILS

In the heart of the east Waukesha retail area, these suites being offered by CBRE are ideal for Medical/Dental practices, various office uses and some retail applications. There is excellent parking and separate entrances for each suite. Traffic in the area is enhanced by the Educators Credit Union operation. The asking rent is very aggressive for the right tenant and signage opportunities are excellent on the facade of the building. If you have interest in the Waukesha area for your business, you need to look seriously at this location.

- + Available space:
 - Suite C: 2,476 SF
 - Suite D: 1,946 SF
- + Rent: \$10.00/SF modified gross
- + Tenant responsible for HVAC and electricity
- + Immediate occupancy
- + Medical Space: Suite C has a lead plated X-ray room
- + Dental Space: Suite D is plumbed for a dental space
- + Monument and building facade signage available



www.cbre.us/milwaukee

CBRE

FOR LEASE
OFFICE SPACE AVAILABLE

1600
SUMMIT AVENUE
Waukesha, WI 53188



EXTERIOR SUITE PHOTO



CONTACT US

KYLE MACK

Associate
+1 414 274 1642
kyle.mack@cbre.com

T. MICHAEL PARKER

Senior Vice President
+1 414 274 1643
michael.parker@cbre.com

© 2017 CBRE, Inc. The information contained in this document has been obtained from sources believed reliable. While CBRE, Inc. does not doubt its accuracy, CBRE, Inc. has not verified it and makes no guarantee, warranty or representation about it. It is your responsibility to independently confirm its accuracy and completeness. Any projections, opinions, assumptions or estimates used are for example only and do not represent the current or future performance of the property. The value of this transaction to you depends on tax and other factors which should be evaluated by your tax, financial and legal advisors. You and your advisors should conduct a careful, independent investigation of the property to determine to your satisfaction the suitability of the property for your needs.

Photos herein are the property of their respective owners and use of these images without the express written consent of the owner is prohibited.

www.cbre.us/milwaukee

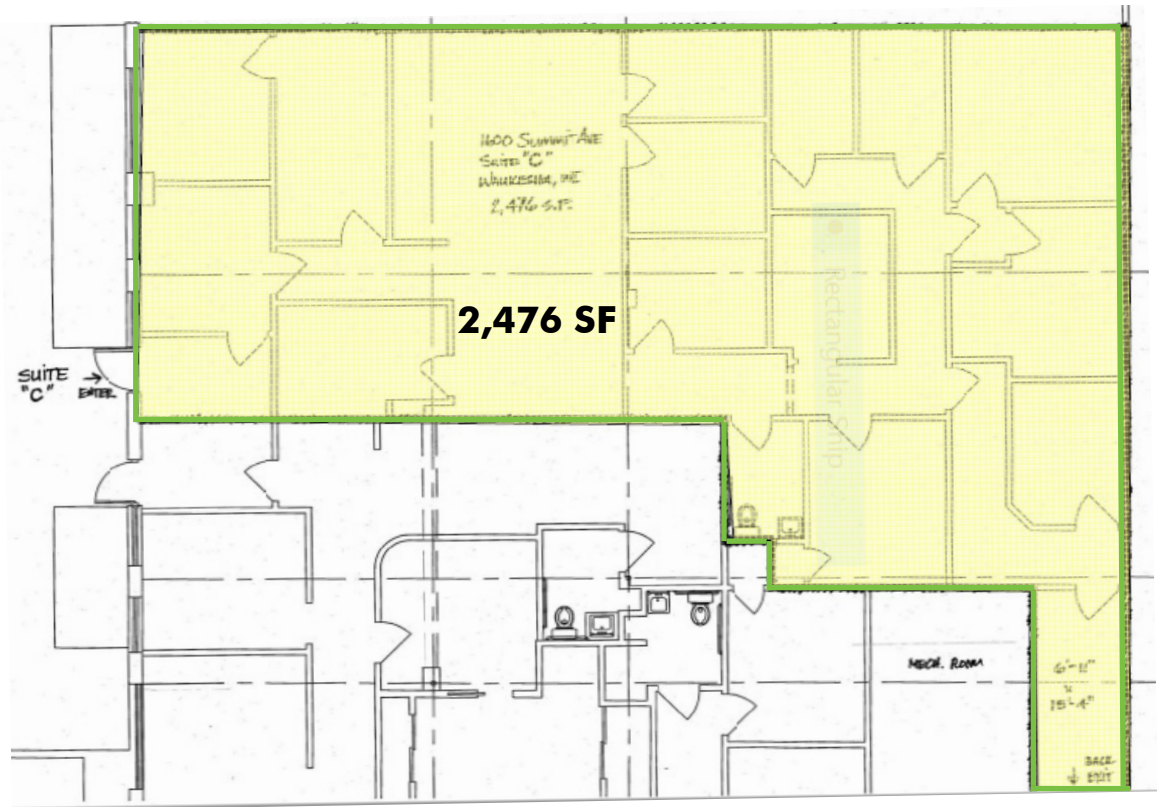
CBRE

FOR LEASE OFFICE SPACE AVAILABLE

1600
SUMMIT AVENUE
Waukesha, WI 53188



SUITE C



CONTACT US

KYLE MACK

Associate
+1 414 274 1642
kyle.mack@cbre.com

T. MICHAEL PARKER

Senior Vice President
+1 414 274 1643
michael.parker@cbre.com

© 2017 CBRE, Inc. The information contained in this document has been obtained from sources believed reliable. While CBRE, Inc. does not doubt its accuracy, CBRE, Inc. has not verified it and makes no guarantee, warranty or representation about it. It is your responsibility to independently confirm its accuracy and completeness. Any projections, opinions, assumptions or estimates used are for example only and do not represent the current or future performance of the property. The value of this transaction to you depends on tax and other factors which should be evaluated by your tax, financial and legal advisors. You and your advisors should conduct a careful, independent investigation of the property to determine to your satisfaction the suitability of the property for your needs.

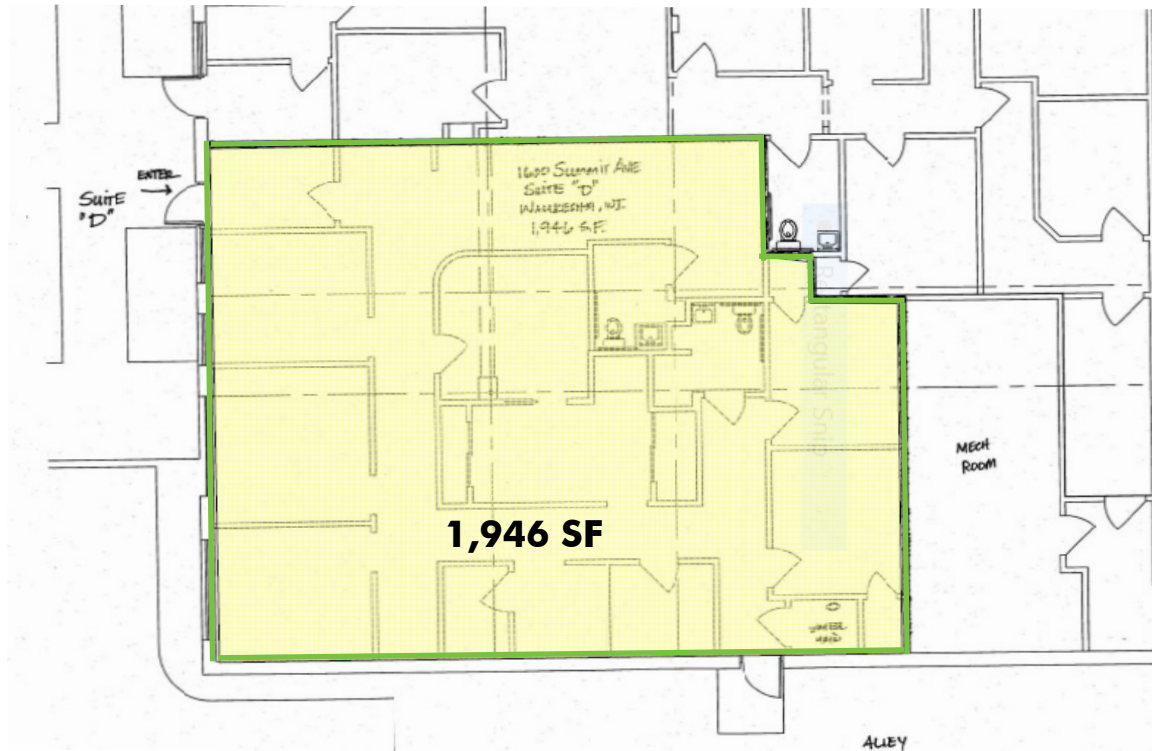
Photos herein are the property of their respective owners and use of these images without the express written consent of the owner is prohibited.

FOR LEASE OFFICE SPACE AVAILABLE

1600
SUMMIT AVENUE
Waukesha, WI 53188



SUITE D



CONTACT US

KYLE MACK

Associate
+1 414 274 1642
kyle.mack@cbre.com

T. MICHAEL PARKER

Senior Vice President
+1 414 274 1643
michael.parker@cbre.com

© 2017 CBRE, Inc. The information contained in this document has been obtained from sources believed reliable. While CBRE, Inc. does not doubt its accuracy, CBRE, Inc. has not verified it and makes no guarantee, warranty or representation about it. It is your responsibility to independently confirm its accuracy and completeness. Any projections, opinions, assumptions or estimates used are for example only and do not represent the current or future performance of the property. The value of this transaction to you depends on tax and other factors which should be evaluated by your tax, financial and legal advisors. You and your advisors should conduct a careful, independent investigation of the property to determine to your satisfaction the suitability of the property for your needs.

Photos herein are the property of their respective owners and use of these images without the express written consent of the owner is prohibited.

www.cbre.us/milwaukee

CBRE

FOR LEASE OFFICE SPACE AVAILABLE

1600
SUMMIT AVENUE
Waukesha, WI 53188



INTERIOR PHOTOS



CONTACT US

KYLE MACK

Associate
+1 414 274 1642
kyle.mack@cbre.com

T. MICHAEL PARKER

Senior Vice President
+1 414 274 1643
michael.parker@cbre.com

© 2017 CBRE, Inc. The information contained in this document has been obtained from sources believed reliable. While CBRE, Inc. does not doubt its accuracy, CBRE, Inc. has not verified it and makes no guarantee, warranty or representation about it. It is your responsibility to independently confirm its accuracy and completeness. Any projections, opinions, assumptions or estimates used are for example only and do not represent the current or future performance of the property. The value of this transaction to you depends on tax and other factors which should be evaluated by your tax, financial and legal advisors. You and your advisors should conduct a careful, independent investigation of the property to determine to your satisfaction the suitability of the property for your needs.

Photos herein are the property of their respective owners and use of these images without the express written consent of the owner is prohibited.

www.cbre.us/milwaukee

CBRE

STATE OF WISCONSIN BROKER DISCLOSURE

To Non-Residential Customers

Wisconsin Law requires all real estate licensees to give the following information about brokerage services to prospective customers.

Prior to negotiating on your behalf the Broker must provide you the following disclosure statement:

BROKER DISCLOSURE TO CUSTOMERS

You are the customer of the broker. The broker is either an agent of another party in the transaction or a subagent of another broker who is the agent of another party in the transaction. The broker, or a salesperson acting on the behalf of the broker, may provide brokerage services to you. Whenever the broker is providing brokerage services to you, the broker owes you, the customer the following duties:

- *The duty to prove brokerage services to you fairly and honestly.*
- *The duty to exercise reasonable skill and care in providing brokerage services to you.*
- *The duty to provide you with accurate information about market conditions within a reasonable time if you request it, unless disclosure of the information is prohibited by law.*
- *The duty to disclose to you in writing certain material adverse facts about a property, unless disclosure of the information is prohibited by law (see "Definition of Material Adverse Facts" below).*
- *The duty to protect your confidentiality. Unless the law requires it, the broker will not disclose your confidential information of other parties.*
- *The duty to safeguard trust funds and other property the broker holds.*
- *The duty, when negotiating, to present contract proposals in an objective and unbiased manner and disclose the advantages and disadvantages of the proposals.*

Please review this information carefully. A broker or salesperson can answer your questions about brokerage services, but if you need legal advice, tax advice, or a professional home inspection, contact an attorney, tax advisor, or home inspector.

This disclosure is required by section 452.135 of the Wisconsin Statutes and is for information only. It is a plain language summary of a broker's duties to a customer under section 452.133(l) of the Wisconsin Statutes.

CONFIDENTIALITY NOTICE TO CUSTOMERS

Broker will keep confidential any information given to broker in confidence, or any information obtained by broker that he or she knows a reasonable person would want to be kept confidential by law, or authorize the broker to disclose particular information. A broker shall continue to keep the information confidential after broker is no longer providing brokerage services to you.

The following information is required to be disclosed by law.

1. Material adverse facts, as defined in section 452.01(5g) of the Wisconsin statutes (see "definition of material adverse facts" below).
2. Any facts known by the broker that contradict any information included in a written inspection report on the property or real estate that is the subject of the transaction. To ensure that the broker is aware of what specific information below. At a later time, you may also provide the broker with other information that you consider to be confidential.

CONFIDENTIAL INFORMATION:

NON-CONFIDENTIAL INFORMATION (The following information may be disclosed by Broker):

(Insert information you authorize to broker to disclose such as financial qualification information)

CONSENT TO TELEPHONE SOLICITATION

I/We agree that the Broker and any affiliated settlement service providers (for example, a mortgage company or title company) may call our/my home or cell phone numbers regarding issues, goods and services related to the real estate transaction until I/we withdraw this consent in writing. List Home/Cell Numbers:

SEX OFFENDER REGISTRY

Notice: You may obtain information about the sex offender registry and persons registered with the registry by contacting the Wisconsin Department of Corrections on the internet at <http://offender.doc.state.wi.us/public/> or by phone at (608)240-5830.

DEFINITION OF MATERIAL ADVERSE FACTS

A "material adverse fact" is defined in Wis. Stat. 452.01 (5g) as an adverse fact that a party indicates is of such significance, or that is generally recognized by a competent licensee as being of such significance to a reasonable party that it affects or would affect the party's decision to enter into a contract or agreement concerning a transaction or affects or would affect the party's decision about the terms of such a contract or agreement. An "adverse fact" is defined in Wis. Stat. 452.01 (1e) as a condition or occurrence that a competent licensee generally recognizes will significantly adversely affect the value of the property, significantly reduce the structural integrity of improvements to real estate, or present a significant health risk to occupants of the property, or information that indicates that a party to a transaction is not able to or does not intend to meet his or her obligations under a contract or agreement made concerning the transaction.