

---

# 9,989 SF RESTAURANT/RETAIL BUILDING ON PRIME RETAIL CORRIDOR

2335 East Market Street, Harrisonburg, VA 22801

---

## Executive Summary



### OFFERING SUMMARY

Sale Price:	\$2,299,900
Lot Size:	2.18 Acres
Building Size:	9,989 Square Feet
Zoning:	B2
Parking:	100+ Dedicated Paved/Striped
Signage:	Elevated Pole/Facade
Access:	East Market Street 31,000 vpd
MLS#:	592713



### PROPERTY OVERVIEW

Rare opportunity to own a prime piece of property along highly desirable East Market Street. Single-story retail/restaurant building containing 9,989 SF with 220 feet road frontage along East Market which boasts traffic counts of 31,000 ADT. Surrounded by national retailers, restaurants, and lodging. Situated less than two miles of Interstate 81, SE Connector Rd with projections estimated at 31,100 ADT, Sentara RMH, and JMU.

For More Information:

Butch Strawderman  
540.246.5959  
butch.strawderman@cottonwood.com

Ken Kline  
540.476.0411  
ken.kline@cottonwood.com

**COTTONWOOD**  
COMMERCIAL  
A COMMERCIAL REAL ESTATE BROKERAGE



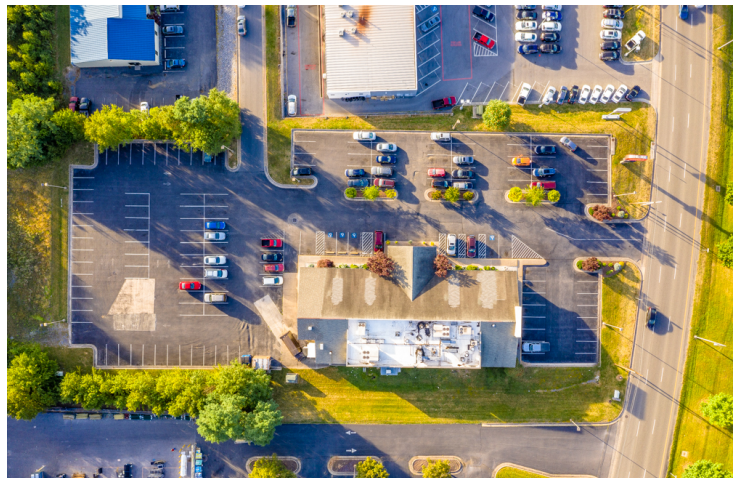
---

# 9,989 SF RESTAURANT/RETAIL BUILDING ON PRIME RETAIL CORRIDOR

2335 East Market Street, Harrisonburg, VA 22801

---

## Exterior Photos



For More Information:

Butch Strawderman

540.246.5959

[butch.strawderman@cottonwood.com](mailto:butch.strawderman@cottonwood.com)

Ken Kline

540.476.0411

[ken.kline@cottonwood.com](mailto:ken.kline@cottonwood.com)

**COTTONWOOD**  
COMMERCIAL  
A COMMERCIAL REAL ESTATE BROKERAGE



---

# 9,989 SF RESTAURANT/RETAIL BUILDING ON PRIME RETAIL CORRIDOR

2335 East Market Street, Harrisonburg, VA 22801

---

## Aerial Photos



For More Information:

Butch Strawderman

540.246.5959

[butch.strawderman@cottonwood.com](mailto:butch.strawderman@cottonwood.com)

Ken Kline

540.476.0411

[ken.kline@cottonwood.com](mailto:ken.kline@cottonwood.com)

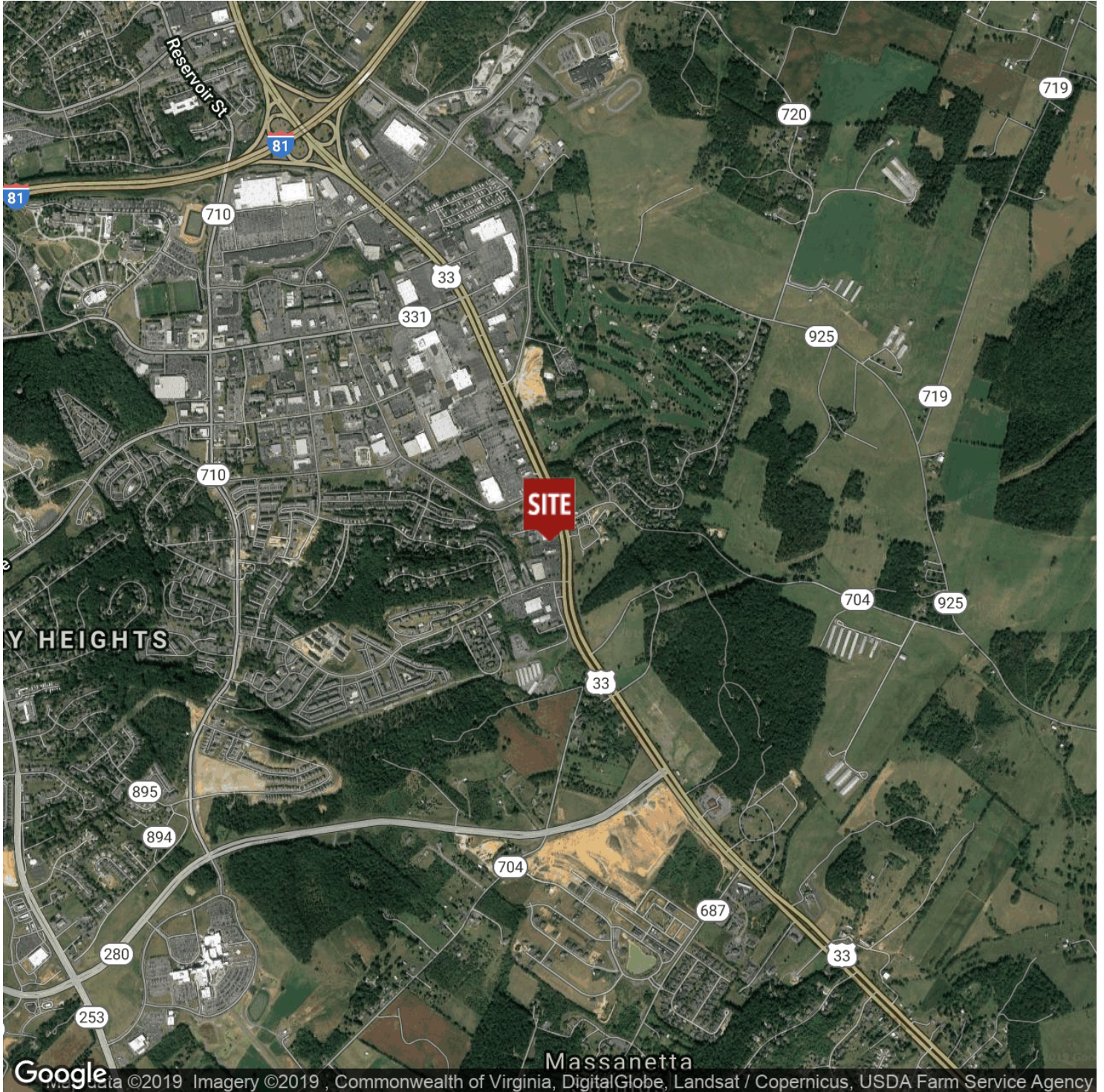
**COTTONWOOD**  
**COMMERCIAL**  
A COMMERCIAL REAL ESTATE BROKERAGE



# 9,989 SF RESTAURANT/RETAIL BUILDING ON PRIME RETAIL CORRIDOR

2335 East Market Street, Harrisonburg, VA 22801

## Location Maps



For More Information:

Butch Strawderman

540.246.5959

butch.strawderman@cottonwood.com

Ken Kline

540.476.0411

ken.kline@cottonwood.com

**COTTONWOOD**  
COMMERCIAL  
A COMMERCIAL REAL ESTATE BROKERAGE