

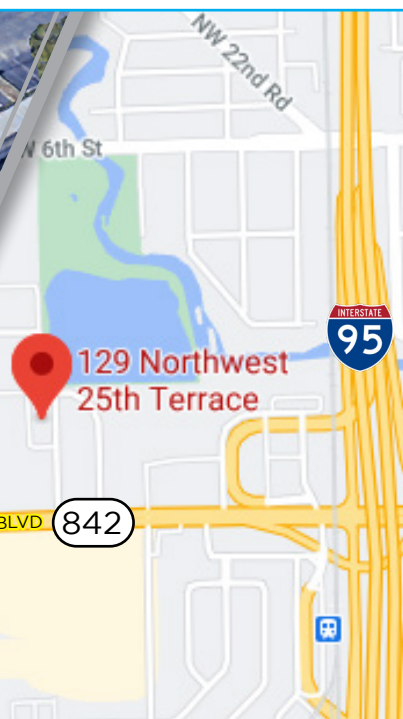
# INDUSTRIAL BUILDING

# FOR SALE

## FOR LEASE

ONLY NORTH SIDE

**FOR LEASE**  
10,000 ±SQFT



**TREC** Total Real Estate Consultants Inc.  
www.trecfl.com

**127-129 NW 25th Ter, Fort Lauderdale, FL 33311**



- 2 Buildings to be Sold Together
- Share Dock High
- Roll up Garage Doors
- 2,000 ± SQFT office
- New Roof : 2019

**FOR SALE**

20,000 ±SQFT  
**\$2,999,000**

**FOR LEASE**

10,000 ±SQFT  
**\$13,900** /Mo + Sales Tax



**JOE PELAYO** /CCIM, SIOR  
trec@joepelayo.com

954.224.8773

**CALL US!**

**TREC**  
Total Real Estate Consultants Inc.  
www.trecfl.com  
954.341.3294

**GEORGE PELAYO** /REALTOR®  
georgetrec@joepelayo.com

954.557.3300



**GEORGE W. CASEY**  
georgewileycasey@gmail.com

954.592.1776



**VICE PRESIDENT  
U.S. VETERAN  
CHAMBER OF COMMERCE**



*Note: This offering subject to errors, omissions, prior sales or withdrawal without notice.*

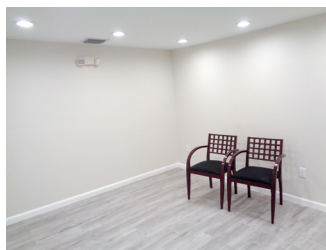
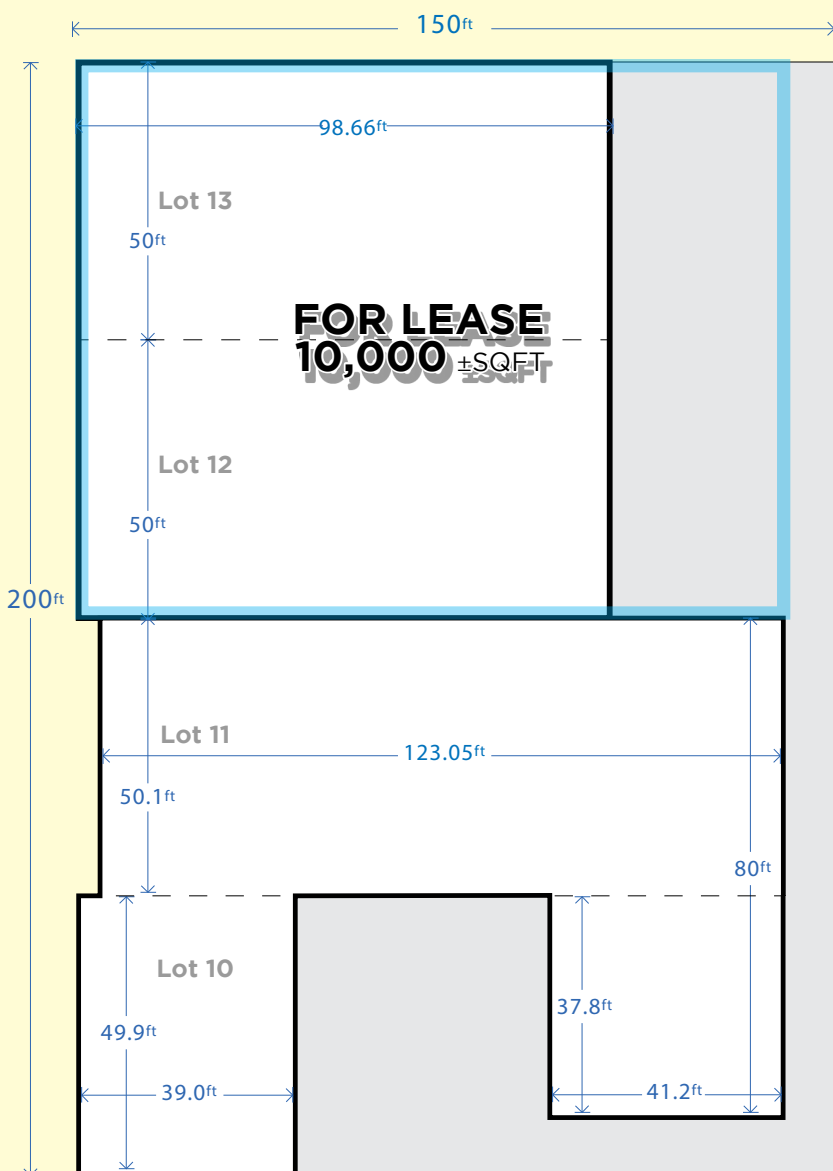




# INDUSTRIAL BUILDING

**FOR SALE**  
**FOR LEASE** ONLY NORTH SIDE

## BUILDING FLOORPLAN



**JOE PELAYO** /CCIM, SIOR  
trec@joepelayo.com

954.224.8773

**CALL US!**

**TREC**

Total Real Estate  
Consultants Inc.  
www.trecfl.com  
954.341.3294

**GEORGE PELAYO** /REALTOR®  
georgetrec@joepelayo.com

954.557.3300



**GEORGE W. CASEY**  
georgewileycasey@gmail.com

954.592.1776



VICE PRESIDENT  
**U.S. VETERAN**  
CHAMBER OF COMMERCE



*Note: This offering subject to errors, omissions, prior sales or withdrawal without notice.*